



CATHOLIC CHARITIES  
DIOCESE OF DES MOINES

# Refugee Resettlement

Presented By Elsie Rotich

Program Manager/ Resettlement Director

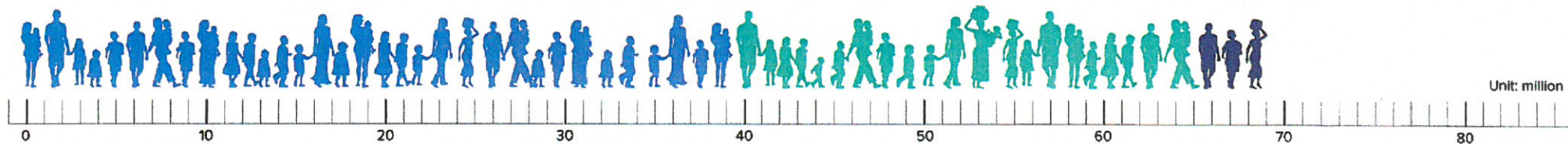
[erotich@catholiccharitiesdm.org](mailto:erotich@catholiccharitiesdm.org)

515-237-5095



# A Global Glance

**68.5 million** forcibly displaced people worldwide



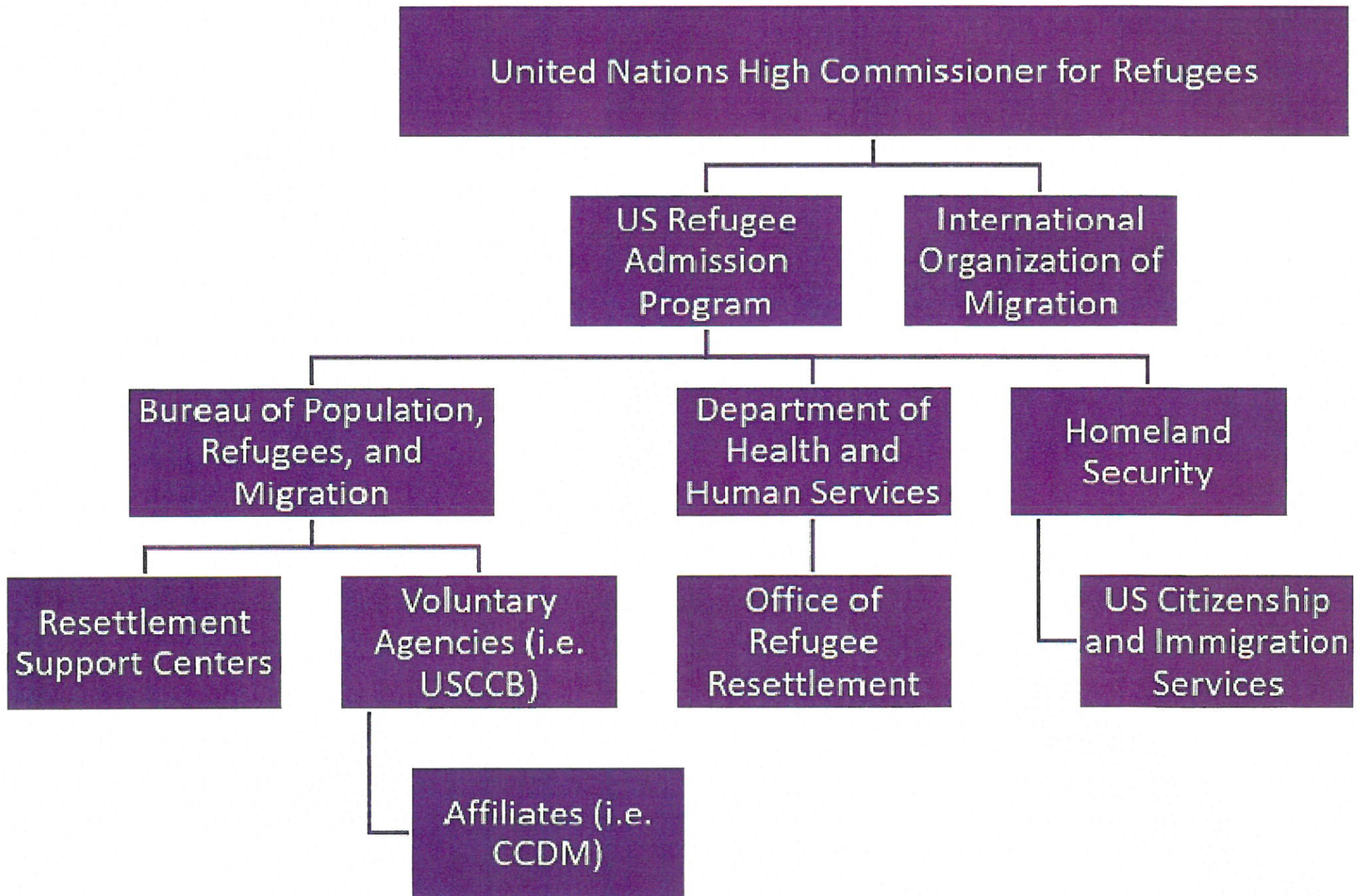
Internally Displaced People  
**40 million**

Refugees  
**25.4 million**  
19.9 million under UNHCR mandate  
5.4 million Palestinian refugees registered by UNRWA

Asylum-seekers  
**3.1 million**

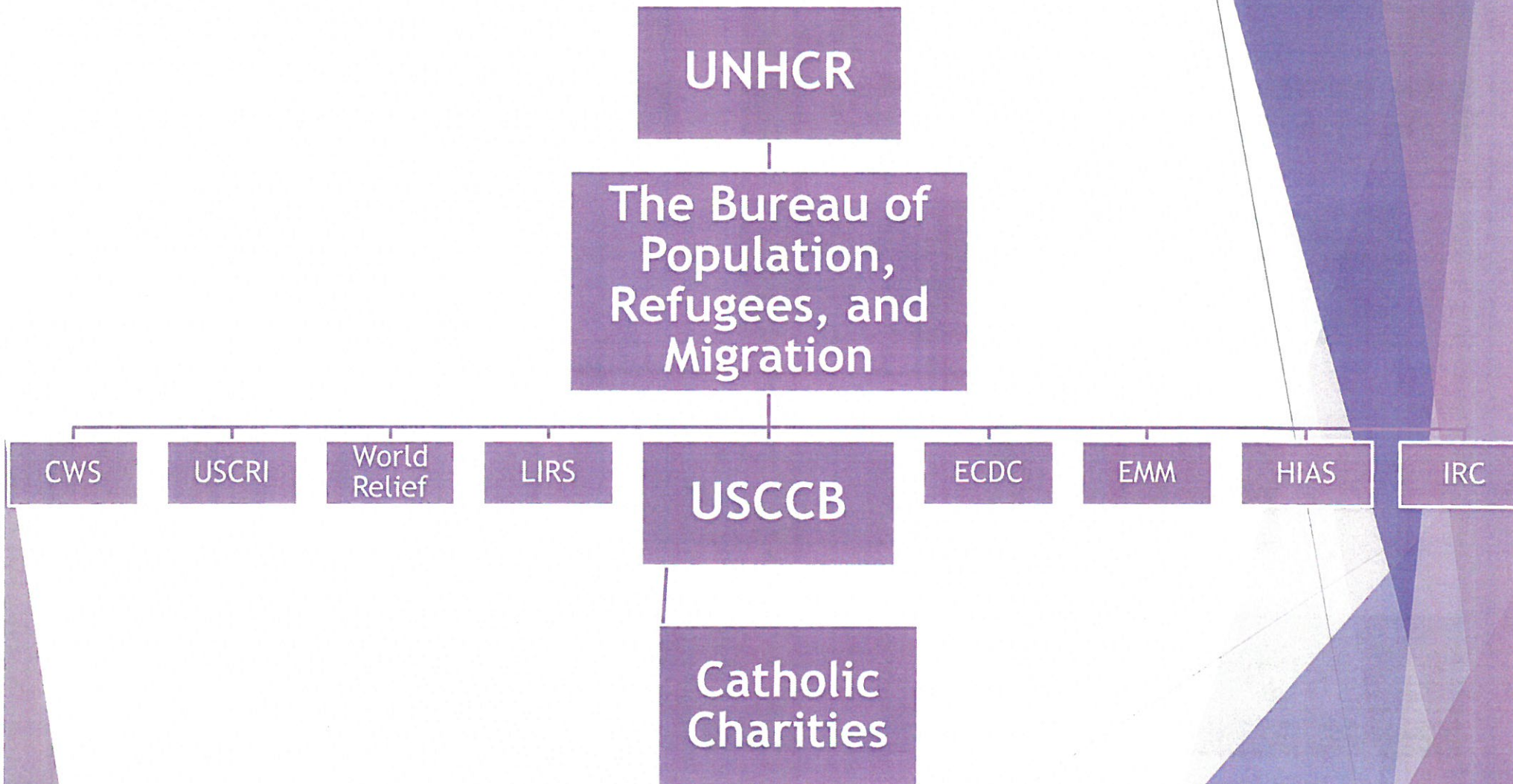
- ▶ 1 person is forcibly displaced every two seconds
- ▶ Over half of the 25.4 million refugees are under the age of 18
- ▶ Only 65,000 refugees were resettled in 2017
  - ▶ 53,716 were resettled in the United States

# Who is Involved





# The Resettlement Hierarchy



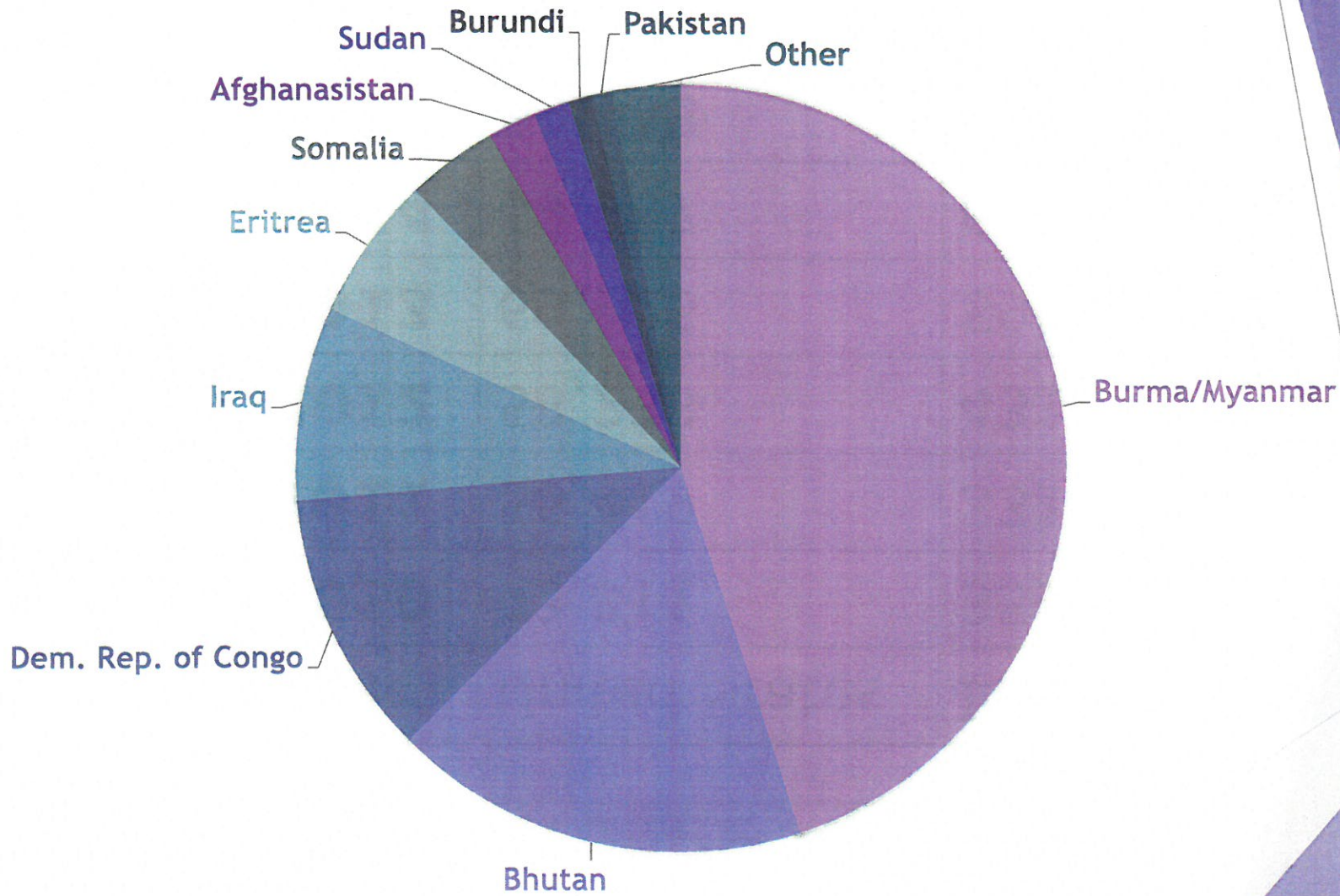
## Refugee Arrivals

<b>Year</b>	<b>United States</b>	<b>Iowa</b>
<b>2010</b>	73,311	359
<b>2011</b>	56,419	331
<b>2012</b>	58,238	431
<b>2013</b>	69,926	598
<b>2014</b>	69,987	692
<b>2015</b>	69,933	812
<b>2016</b>	84,995	995
<b>2017</b>	53,716	671
<b>2018</b>	22,491	530



# Our Demographics

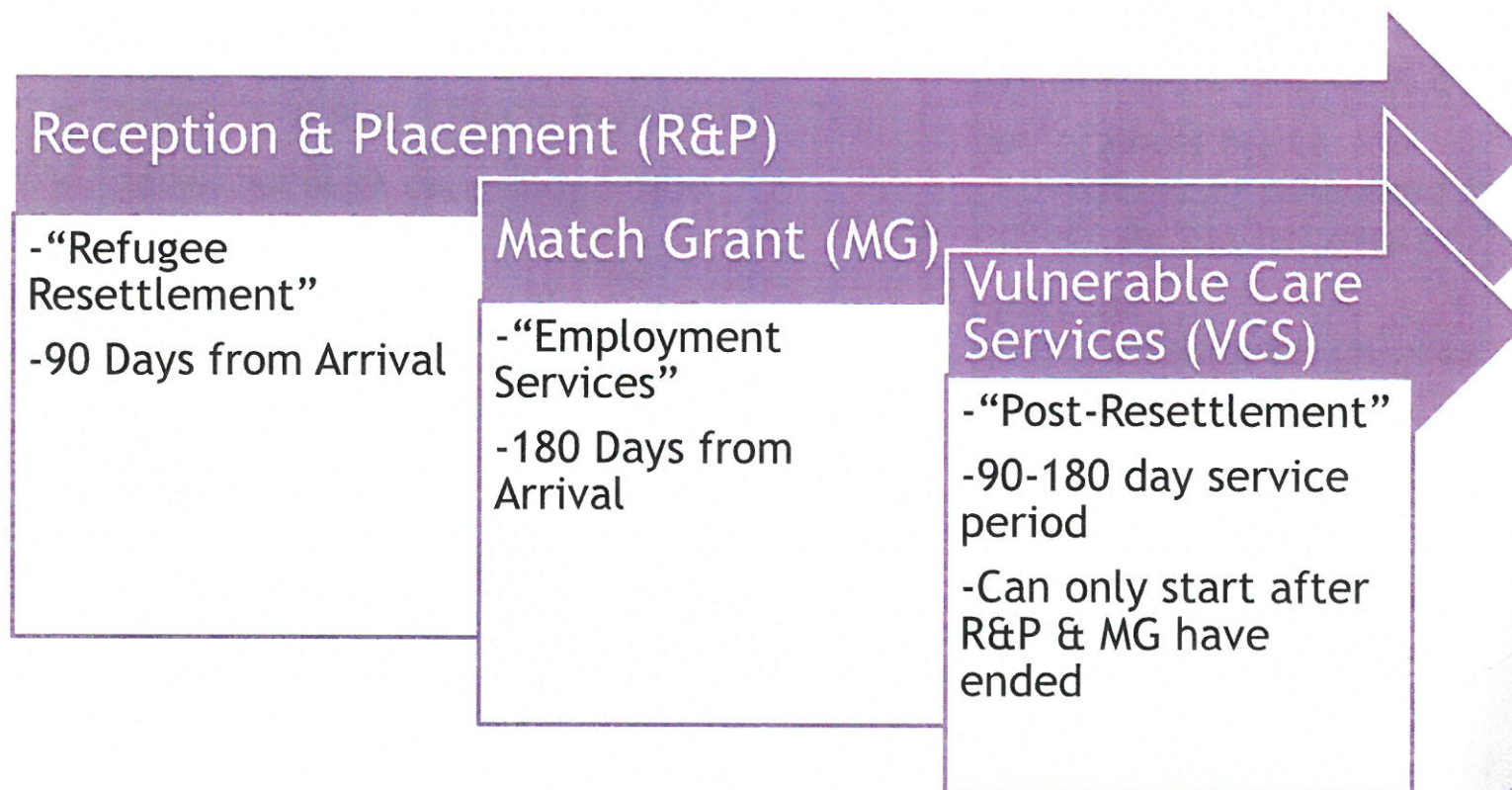
## ARRIVALS BY COUNTRY (2012-2018)



“Other” includes 10 countries with under 10 total arrivals



# Catholic Charities Refugee Resettlement Programs





# Reception & Placement (R&P) Services

## ▶ Pre-Arrival

- ▶ Connecting with family/friends
- ▶ Housing, furnishing

## ▶ Post-Arrival

- ▶ Airport reception
- ▶ 24 hour home visit
- ▶ Housing orientation
- ▶ Intake
- ▶ Social Security card application
- ▶ Food, cash and medical assistance application
- ▶ Bus training- DART
- ▶ Enrollment in English Language programs.
- ▶ Multiple Home Visits.
- ▶ Enrollment in job readiness and employment services
- ▶ School enrollment for children
- ▶ Selective services registration
- ▶ Health screenings- Refugee physicals
- ▶ Change of address with U.S Department of Homeland security and U.S post office
- ▶ Referrals to Community Services (elderly, high medical need etc)
- ▶ Cultural Orientation
- ▶ Referral to community services as needed.
- ▶ Women infants and children programs and every step

**\*All Completed within 90 Days of Arrival\***



# Cultural Orientation

## Topics Covered

- ▶ Roles of Resettlement Agency
- ▶ US Laws
- ▶ Safety
- ▶ New Community
- ▶ Education
- ▶ English
- ▶ Employment
- ▶ Finance
- ▶ Public Assistance
- ▶ Refugee Status
- ▶ Housing
- ▶ Health
- ▶ Hygiene
- ▶ Transportation
- ▶ Cultural Adjustment
- ▶ Budgeting and personal finance
- ▶ Adjustment of status

---

## Adult Learning Strategies

- ▶ Interactive and experience based activities
- ▶ Various modes of information distribution
- ▶ Engagement of the classroom by providing a student guided classroom set-up
- ▶ Visual and Auditory Learning Styles



# Matching Grant (MG)

- ▶ Program Goal
  - ▶ To help clients achieve early economic self-sufficiency through employment without accessing public cash assistance.
  
- ▶ Time Period
  - ▶ 1-180 days
  
- ▶ Services Provided
  - ▶ Case Management
  - ▶ Employment Services
  - ▶ Maintenance Assistance and Cash Allowance
  - ▶ Local Administration
  - ▶ English Language Training Referral
  - ▶ Health and Medical Services Referral
  - ▶ Employment / Job readiness Training
  - ▶ Social Adjustment and other support Services



# Vulnerable Care Services

- ▶ Program Goal
  - ▶ “To facilitate self-sufficiency for vulnerable newcomer populations through intensive case management support”
  
- ▶ Time Period
  - ▶ 90, 120, 150, or 180 days, depending on intensity of needs
  - ▶ Continued case management for vulnerable clients needing intensive case management after R&P and MG services are complete.
  
- ▶ Services Provided
  - ▶ Intensive case management
  - ▶ Referral to local resources
  - ▶ Transportation and interpretation services
  - ▶ Monthly reporting



# “Home”- by Warsan Shire

“no one leaves home unless  
home is the mouth of a shark.

...

you have to understand,  
no one puts their children in a boat  
unless the water is safer than the land.

...

I want to go home, but home is the mouth of a shark  
home is the barrel of the gun  
and no one would leave home  
unless home chased you to the shore  
unless home tells you to  
leave what you could not behind,  
even if it was human.”

