

New Members of the Iowa Senate
30th General Assembly



John L. Bleakly (R)



Abner H. Gale (R)



Shirley Gilliland (R)



John H. Jackson (R)



William C. Kimmel (R)



George Kinne (R)



Byron W. Newberry (R)



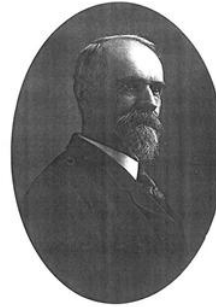
Charles George Saunders (R)



Robert C. Stirton (D)



Marion Floyd Stookey (R)



Lewis Leroy Taylor (D)



Daniel Webster Turner (R)



John F. Wade (D)



Archibald C. Wilson (R)

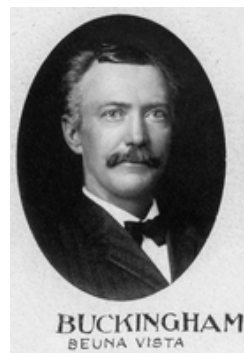
New Members of the Iowa House 30 th General Assembly



Ransom James Bixby (R)



Edward Boland (R)



Frank N. Buckingham (R)



Theodor Carstensen (R)



Timothy Charter Clary (D)



William Cobb (R)



Stanley Conn (R)



Charles F. Crose (R)



Justin R. Doran (R)



Daniel Webster Dow (R)



Thomas Geneva (D)



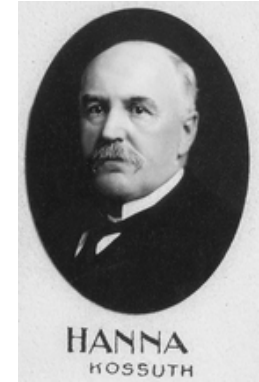
Ross Holland Gregory (R)



Montague Hakes (D)



Albert F.N. Hambleton (R)



George Washington Hanna (R)



William Sherman Hart (R)



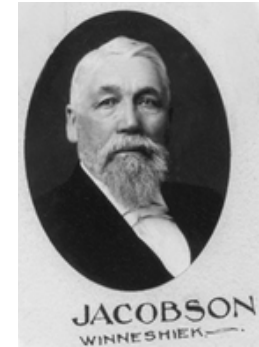
Philip J. Heles (D)



Ruluff White Hollembeak (R)



Thomas H. Hume (R)



Abraham Jacobson (R)



Christian Neil Jepson (R)



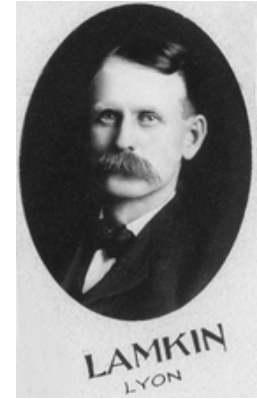
Frank F. Jones (R)



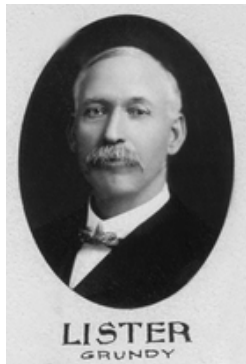
Charles Augustus Kennedy
(R)



Francis Marion Laird (D)



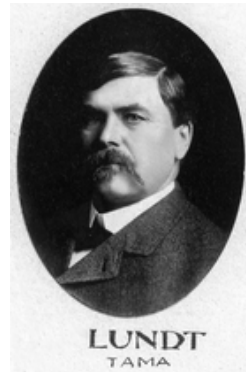
Charles B. Lamkin (R)



John Lister (R)



Jason H. Lowrey (R)



John F. Lundt (D)



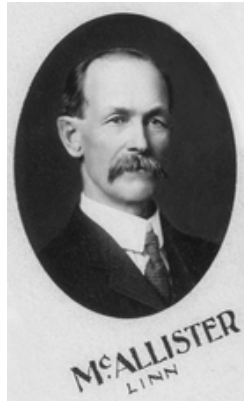
Orville K. Maben (R)



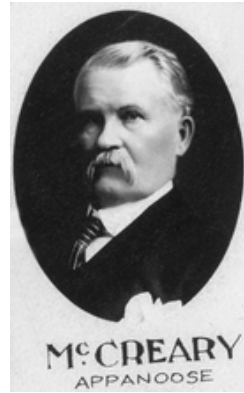
Eli Manning (R)



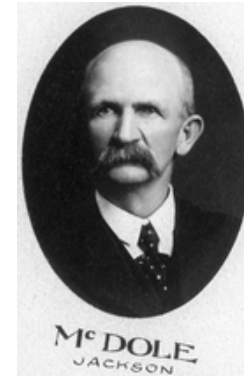
Robert John Martin (R)



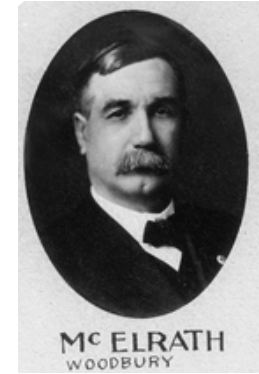
John McAllister (R)



William Miller McCreary (D)



Albert Esmay McDole (R)



William Waddle McElrath (R)



James Findley Morris (R)



David Charles Mott (R)



John Franklin Offill (R)



Herbrand L. Olson (E)



Robert Melvin Peet (D)



Henry Ritter (D)



Ezekiel J. Sankey (D)



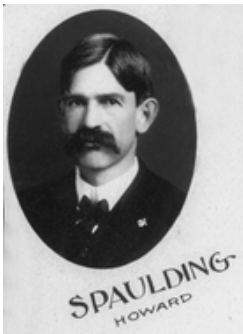
William W. Saylor (R)



John D. Shaffer (R)



Scott Skinner (R)



Henry L. Spaulding (R)



John Stanley Stanbery (R)



Adolph H. Stoltenberg (R)



L. F. Summers (R)



Lorenzo Dow Teter (R)



Albert Benjamin Washburn
(R)



Elbert Wright Weeks (R)



William Welden (E)



George Raymond Whitmer
(D)



Horace H. Willson (D)



Omar Pacha Wyland (D)