



Department of Administrative Services

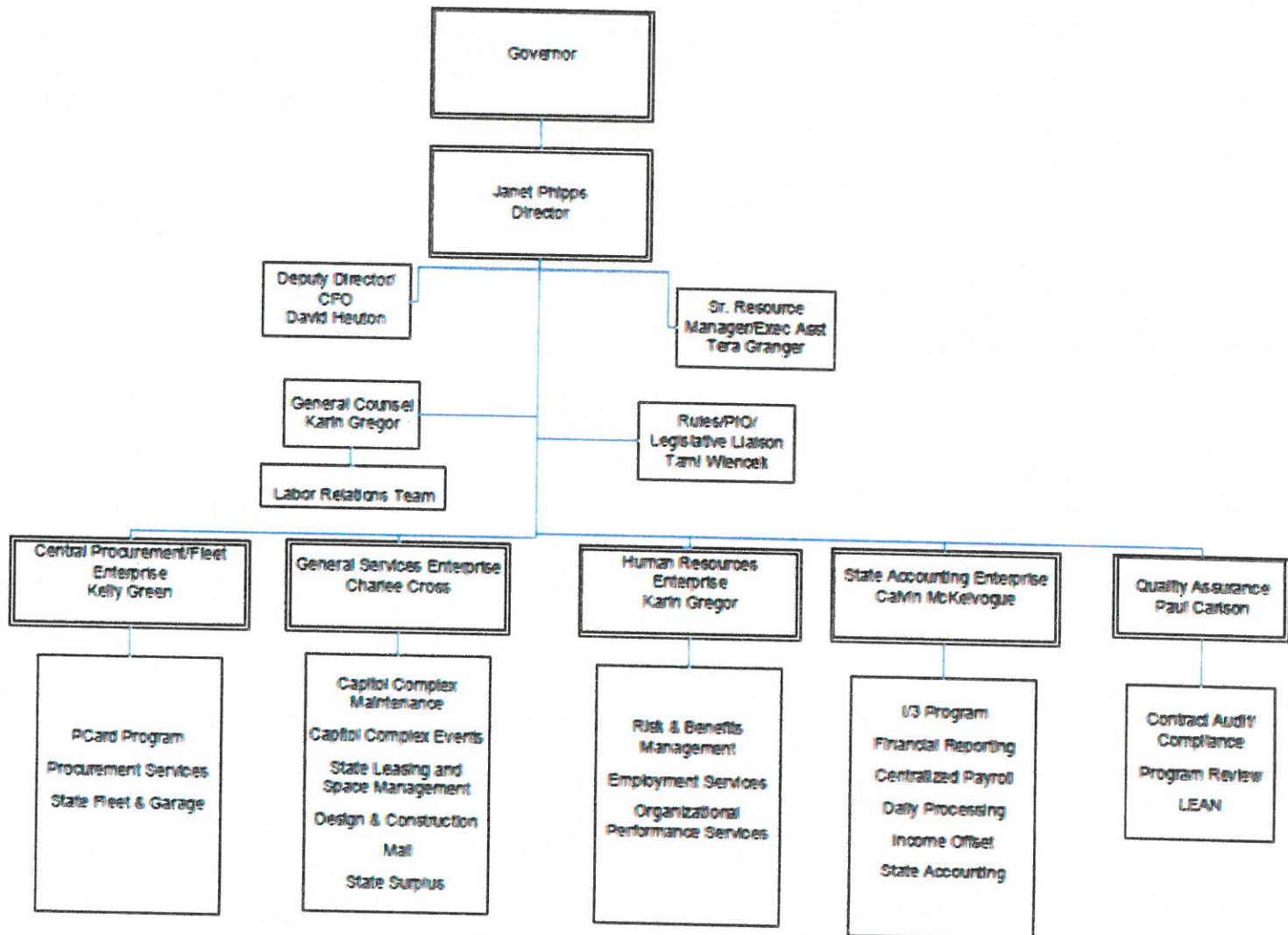
Presentation to:

**The Administration and Regulation
Appropriations Subcommittee**

February 15, 2017



Iowa Department of Administrative Services





Core Services

Internal and administrative operations of the department (Director's Office, Finance & Operations, Legal Counsel, Communications/Legislative Liaison) – “shared services.”

- Over 17,700 bills paid annually and over \$131 million billed annually through e-DAS
- Provide financial services to 6 outside agencies



Central Procurement/Fleet Enterprise

Services Provided

- Procurement of Goods and Services for State Agencies
- State Purchasing Card Program
- State Motor Pool and Garage Service Center
- Fleet Procurement and Auctions
- Risk Management
 - ✓ FY2016 P-card Rebate of \$355,376
 - ✓ FY2016 Master Agreements w/Spend of \$104.1 Million
 - ✓ Motor Pool Utilization Exceeds 90% of Capacity



General Services Enterprise

Services Provided

- Space Management (Capitol Complex and Leased Space)
- Buildings and Grounds
- Design and Construction Services
- State Surplus Property
- Energy Management
- Capitol Complex Events
- Mail Services
 - ✓ 139 Construction Projects Worth \$110 Million in Pipeline
 - ✓ Responsible for Over 2 Million sq. ft. of Space and 200 Acres on Capitol Complex and Ankeny Labs
 - ✓ 545 Events Hosted on Capitol Complex
 - ✓ Manage 210 statewide leases/ >1 million sq. ft.



Human Resources Enterprise

Services Provided

- State Employment, Application Intake, and Processing
- Classification and Pay
- Employee Benefits
- Affirmative Action/Equal Employment Opportunity
- Training and Development
- Labor Relations
- Retirement Investors' Club
 - ✓ 15 Agencies or Divisions Consolidated, with a Headcount of 4,239
 - ✓ 196 Training Courses Held Annually with 2,958 Employees Trained
 - ✓ 42,042 Job Applications Reviewed
 - ✓ Administered 32,326 Health Insurance Contracts for Employees and Retirees
 - ✓ Processed 613 Grievances



State Accounting Enterprise

Services Provided

- Centralized Payroll and Accounting
- Offsets Program
- State CAFR and GAAP Reports
 - ✓ Issues 6.4 Million Warrants Annually
 - ✓ FY16 Offsets - \$47.0 million
 - ✓ \$3.8 Million in Casino Income Offset to the Courts and State Agencies



General Fund Appropriations FY2017 through FY2019

	FY2017 Adj.	FY2018 Gov's Rec	FY2019 Gov's Rec
Operations *	\$3,973,562	\$3,874,978	\$3,874,978
FTE	56.56	51.13	51.13
Utilities	2,509,649	2,447,360	2,447,360
FTE	1.00	1.00	1.00
Terrace Hill *	392,934	386,660	386,660
FTE	5.00	5.07	5.07
Totals	\$6,876,145	\$6,708,998	\$6,708,998
FTE	62.56	57.20	57.20

* SF130 permitted agencies to utilize Training and Technology carry-forward to mitigate the impact of the budget adjustments (see Section 1, subsections 3 and 5). Training and Technology carry-forward was utilized in both the DAS Operating and Terrace Hill appropriations.



Allocation of General Fund Appropriations Adjustments

	FY2017 <u>Before Adjustments</u>	FY2017 <u>After Adjustments</u>
Training & Tech. *	\$ 62,972	\$ 0
Director's Office	174,010	168,790
Ceremonial	1,417,785	1,400,322
State Accounting	<u>2,455,179</u>	<u>2,404,450</u>
Total C85	<u>\$ 4,109,946</u>	<u>\$ 3,973,562</u>
Utilities - C86	2,555,990	2,509,649
Terrace Hill - C87 *	403,824	392,934
Fed. Cash Mgmt. - 824 *	56,587	6,587
Unempl. Comp. - 825 *	<u>440,371</u>	<u>424,982</u>
Total	<u>\$ 7,566,718</u>	<u>\$ 7,307,714</u>

* SF130 permitted agencies to utilize Training and Technology carry-forward and allowed DOM to reduce standing appropriations to mitigate the impact of the budget adjustments (see Section 1, subsections 3 and 5). Training and Technology carry-forward was utilized in both the DAS Operating and Terrace Hill appropriations and the estimates for the standing appropriations for Federal Cash Management and Unemployment Compensation were reduced.

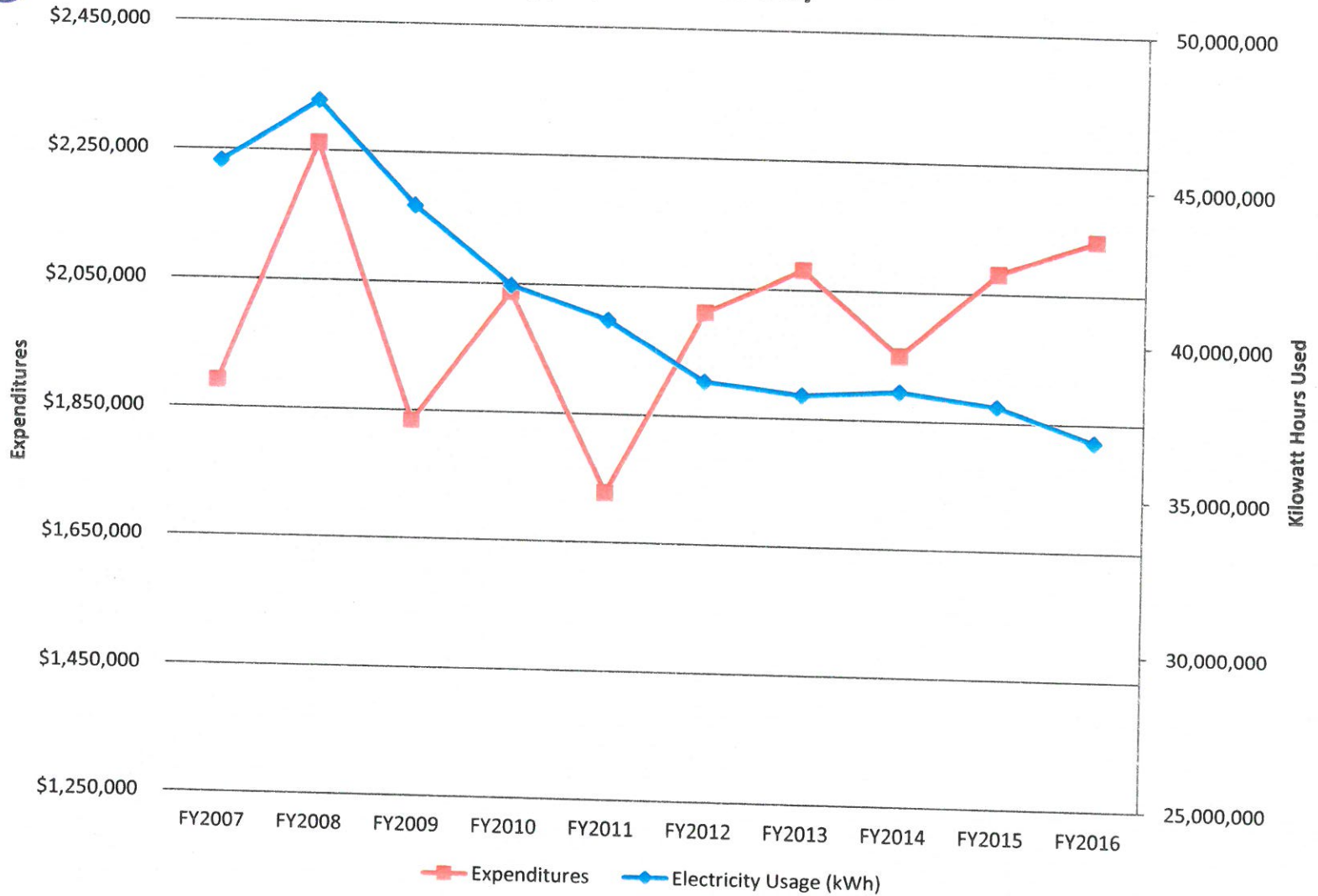


Capitol Complex Utilities

Fiscal Year	Gas Consumed (Therms)	Elec. Consumed Kwh	Expenditures
2012	631,031	38,606,749	\$2,562,564
2013	853,071	38,245,127	\$2,762,886
2014	978,224	38,429,444	\$2,858,601
2015	861,433	38,014,228	\$2,916,316
2016	795,309	36,901,327	\$2,865,027
2017 Estimated			\$3,133,496

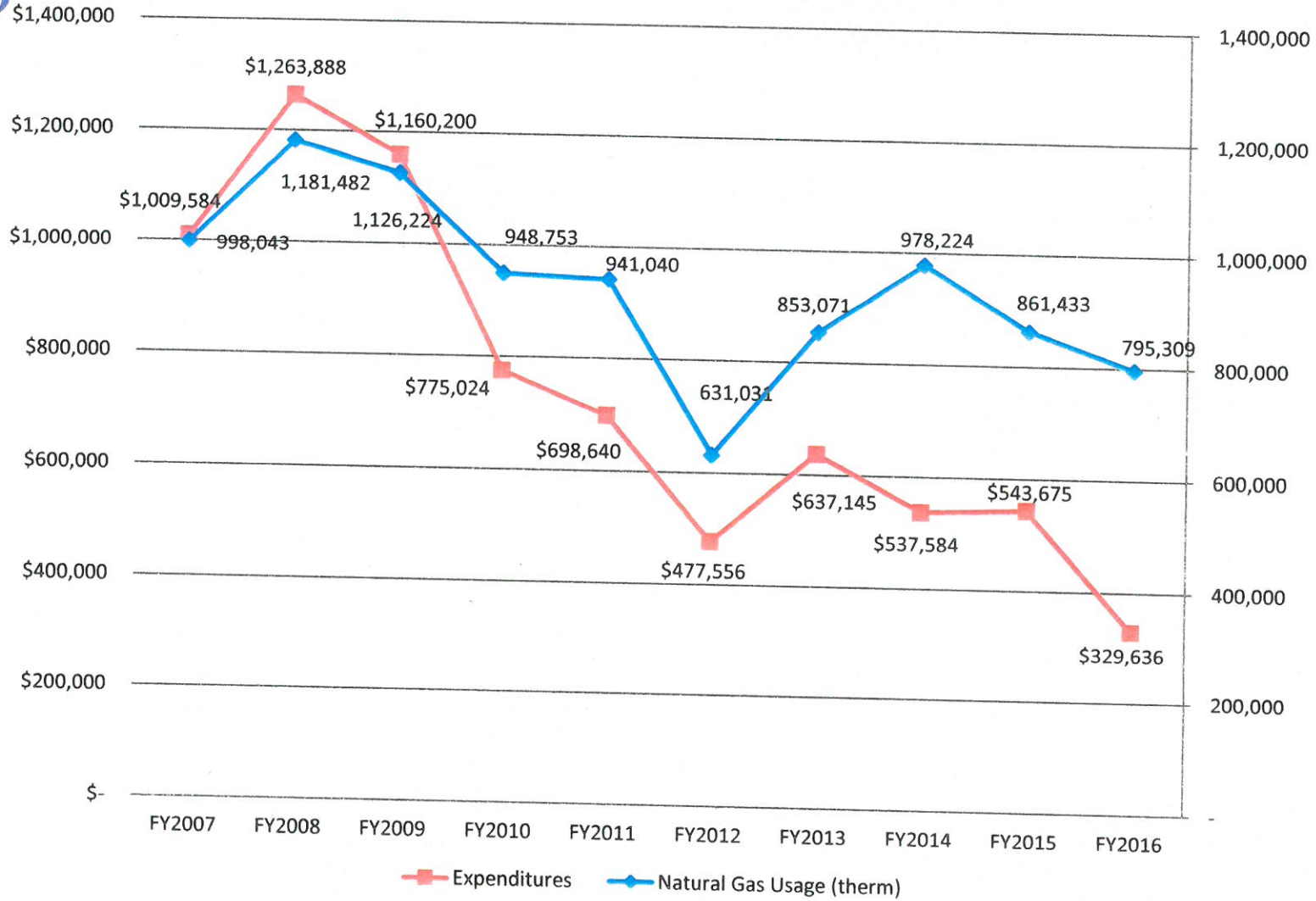


Department of Administrative Services Consumption and Expenditures for Capitol Complex Electricity Appropriation C87 Only



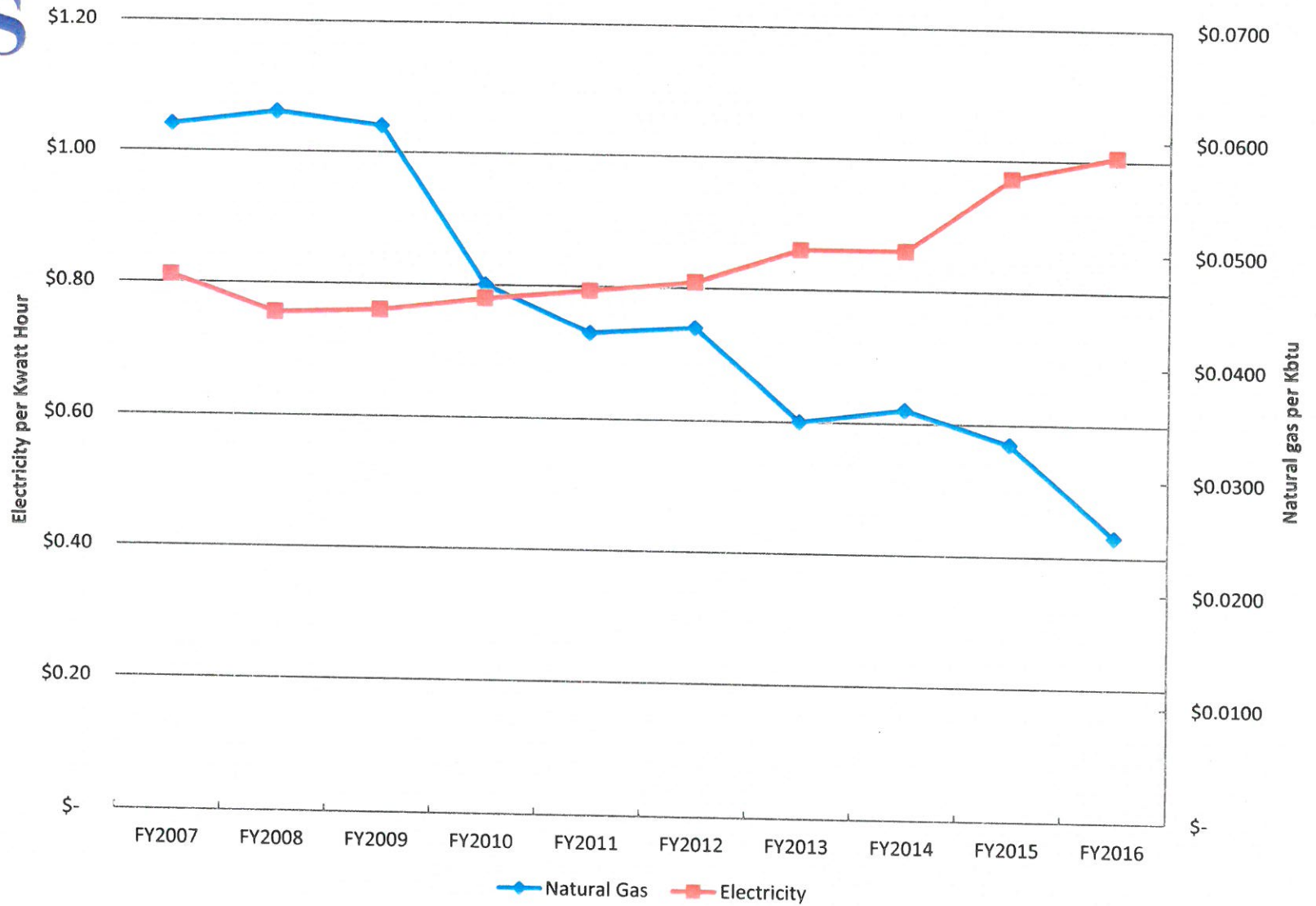


Department of Administrative Services Consumption and Expenditures for Capitol Complex Natural Gas Appropriation C87 Only



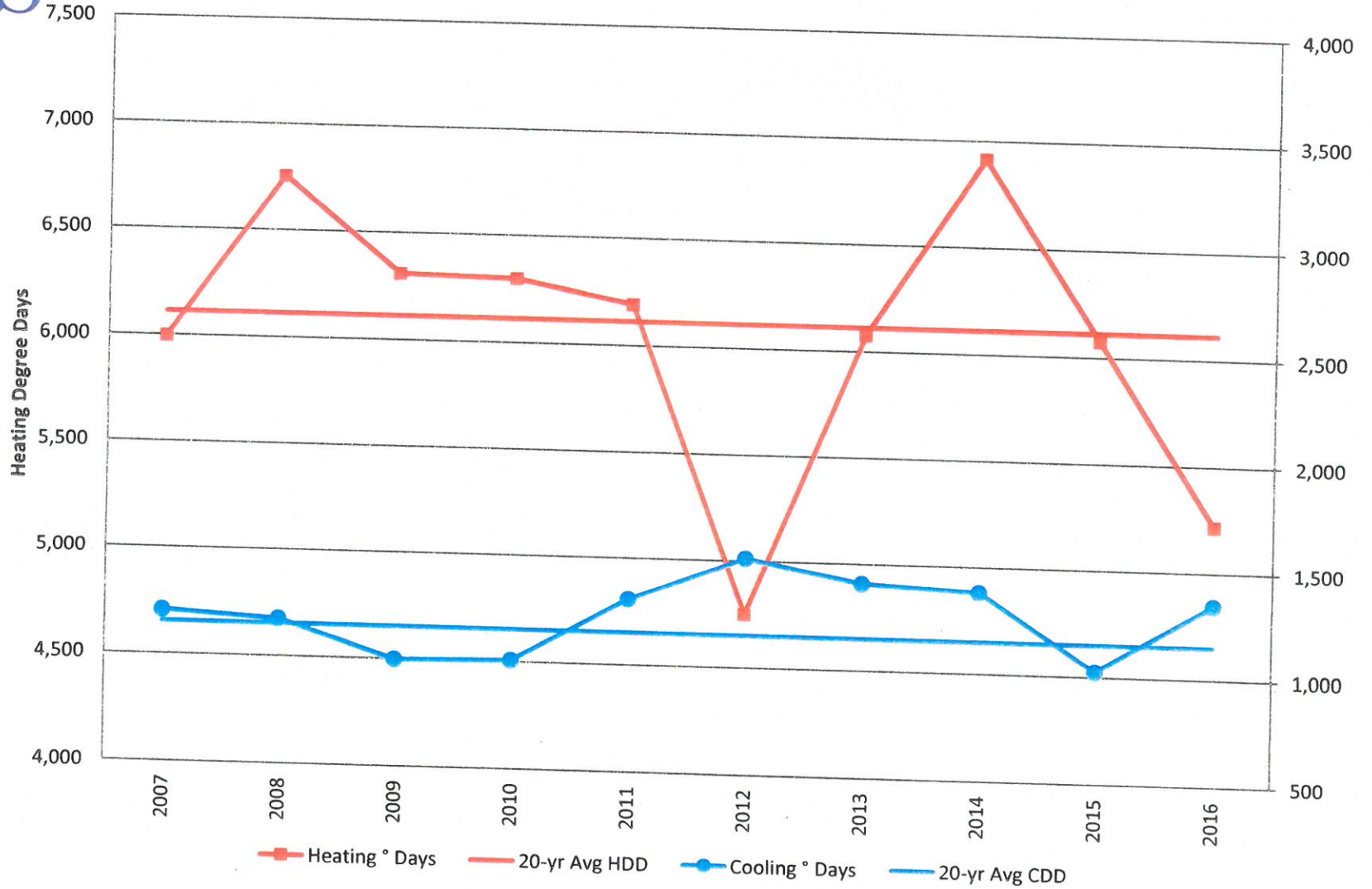


Utility Rate Changes FY2007 - FY2016



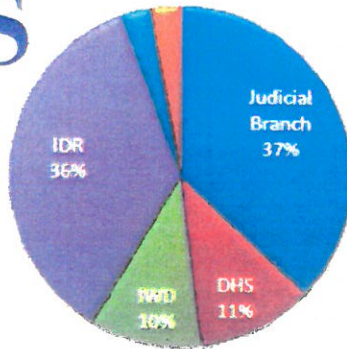


Des Moines Heating and Cooling Degree Days Fiscal Years 2007 - 2016 65° F Balance Point





Income Offset Program



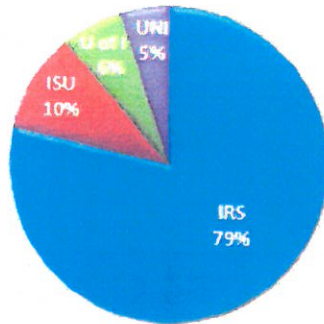
State of Iowa Departments

\$13,930,873	Judicial Branch
\$13,513,903	Dept. of Revenue (IDR)
\$4,191,462	Dept. of Human Services (DHS)
\$3,973,186	IA Workforce Development (IWD)
\$1,062,534	Dept. of Inspections & Appeals 3%
\$313,764	*Other State Agencies 3%
\$36,985,722	Total

Income Offset Fiscal Year 2016 Total Offset

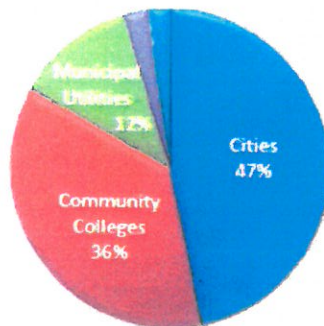
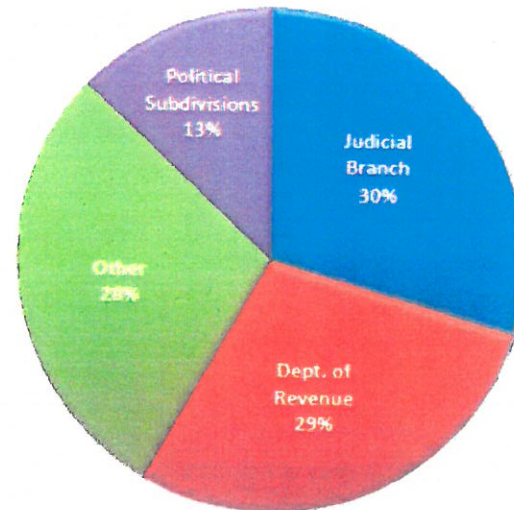
\$46,972,408

Overview of Offset Distribution



Universities & Internal Revenue Service

\$3,073,630	Internal Revenue Service (IRS)
\$399,503	Iowa State University (ISU)
\$245,654	University of Iowa (U of I)
\$191,621	University of Northern Iowa (UNI)
\$3,910,408	Total



Political Subdivisions

\$2,840,489	Cities
\$2,215,251	Community Colleges
\$732,370	Municipal Utilities
\$154,317	Counties 3%
\$133,851	Housing Authorities 2%
\$6,076,278	Total

See following page for breakdown of:
*Other State Agencies
Political Subdivisions



Thank You