

# IOWA DEPARTMENT OF NATURAL RESOURCES

---

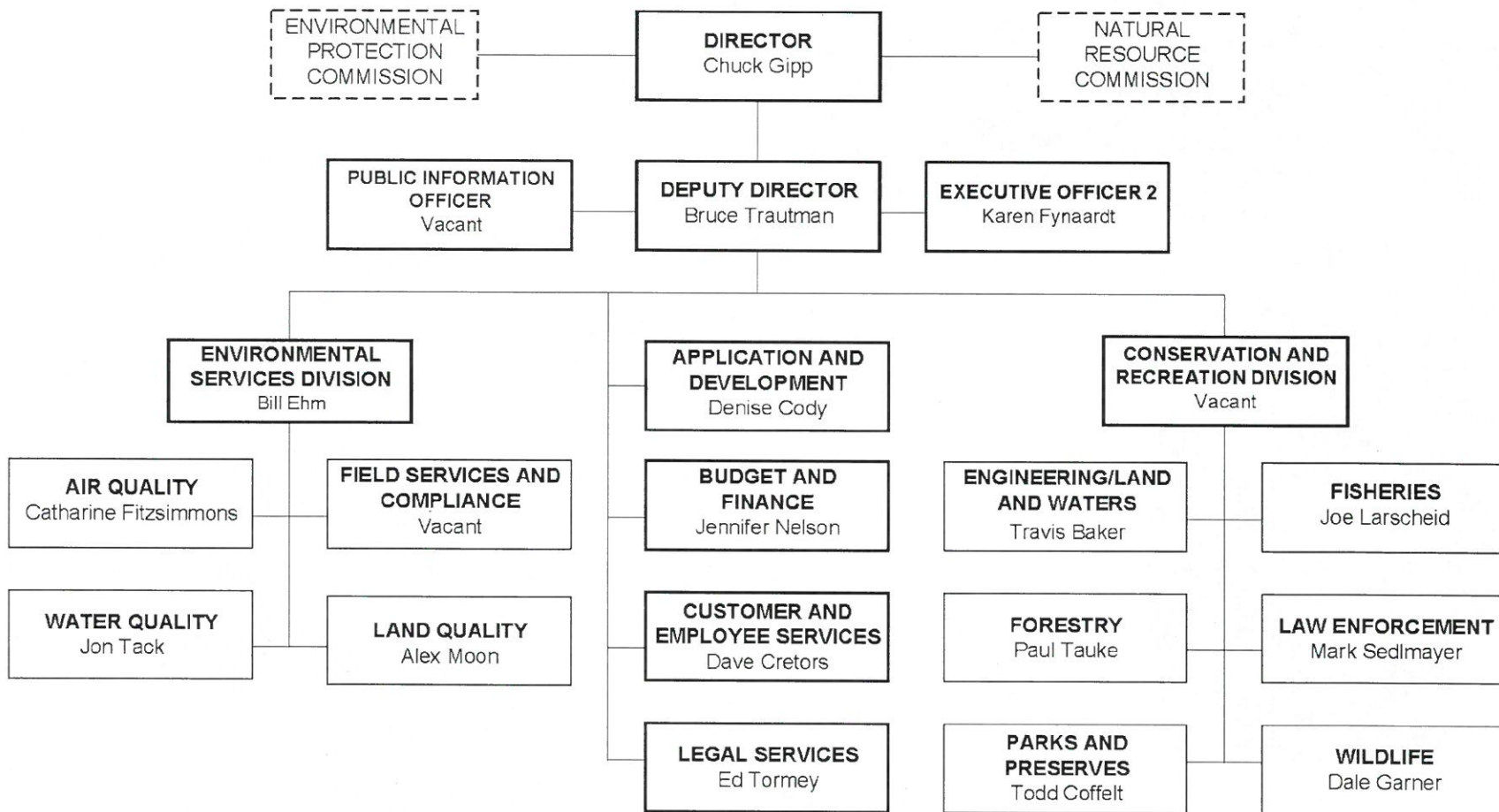
LEADING IOWANS IN CARING FOR OUR NATURAL RESOURCES

Budget Presentation to  
Ag and Natural Resources  
Budget Subcommittee

# Iowa Department of Natural Resources

**Mission: To conserve and enhance our natural resources in cooperation with individuals and organizations to improve the quality of life in Iowa and ensure a legacy for future generations.**





# Quality Natural Resources for Iowans

- **Fish and Wildlife**
  - **Seven** fish hatcheries, raising **150 million** fish for lake and river stockings
  - **200** lakes, **19,000** miles of interior streams, **78** trout streams managed for aquatic recreation
  - **477** DNR-managed wildlife areas
  - Native wildlife restoration including turkeys, eagles, otters and more



# Quality Natural Resources for Iowans

- **Outdoor Recreation**

- **68** state parks and recreation areas, including Honey Creek Resort (20 additional state parks are managed by cities or counties)
- **Four** state forests – Loess Hills, Stephens, Yellow River, Shimek
- **600** miles of DNR-managed trails for hiking, biking, equestrian, snowmobiling, etc.
- **12** shooting range



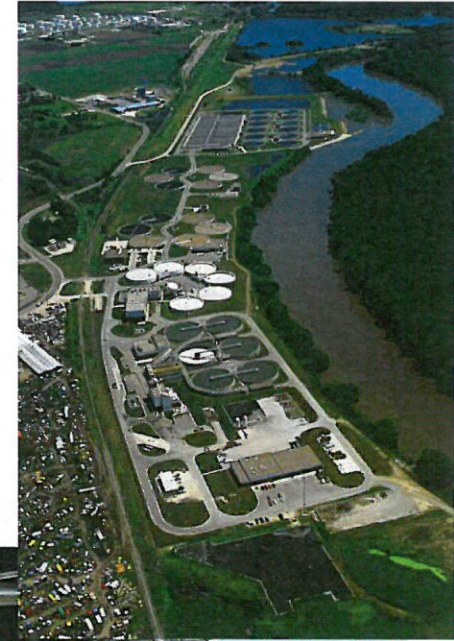
# Health and Safety of Iowans

- **Environmental Protection**

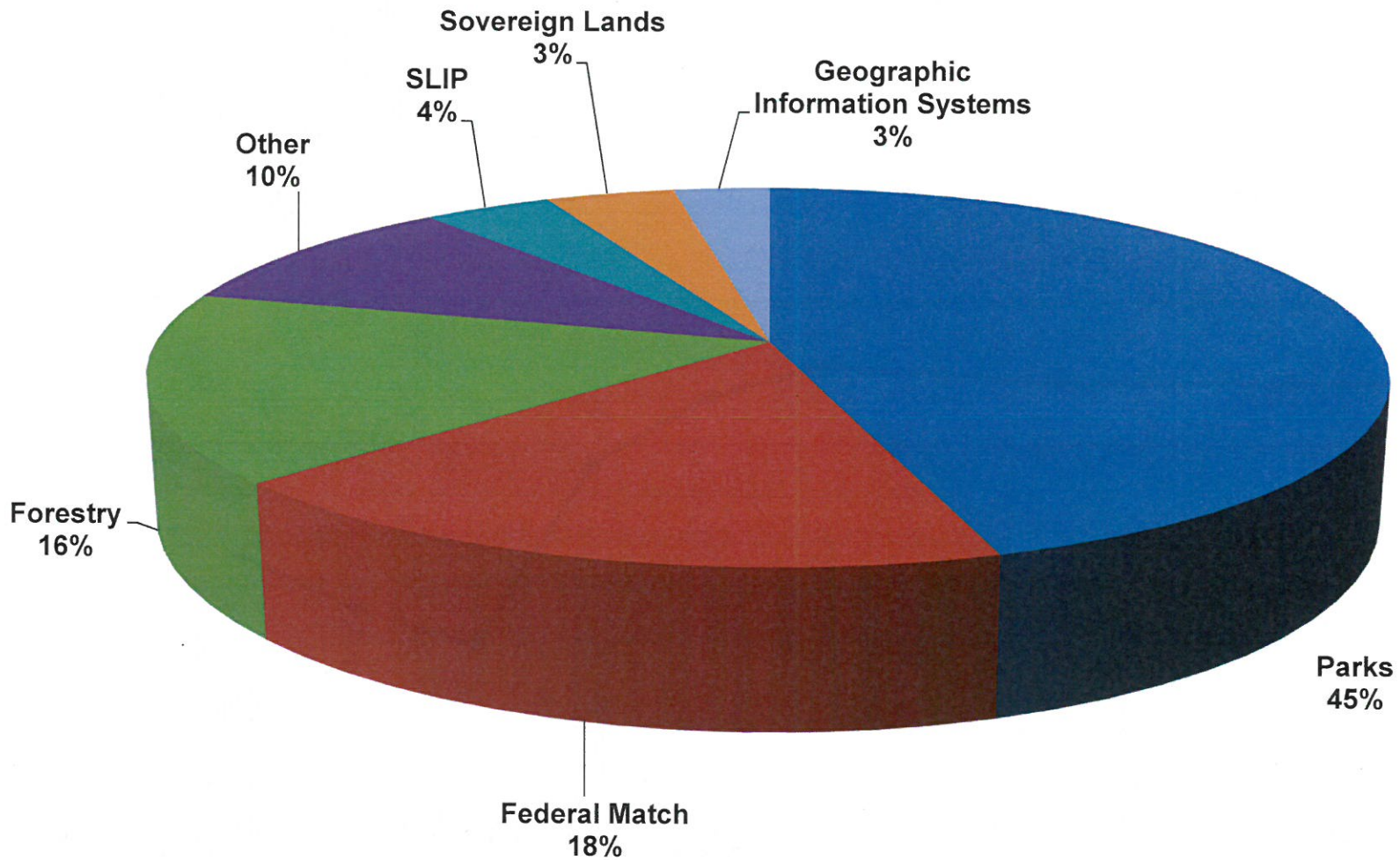
- 1,668 NPDES (discharge) permits
- 6,666 underground storage tanks
- 1,878 public water supplies
- 40,000 regulated facilities given compliance assistance to ensure healthy air, water and land

- **Recreational Safety**

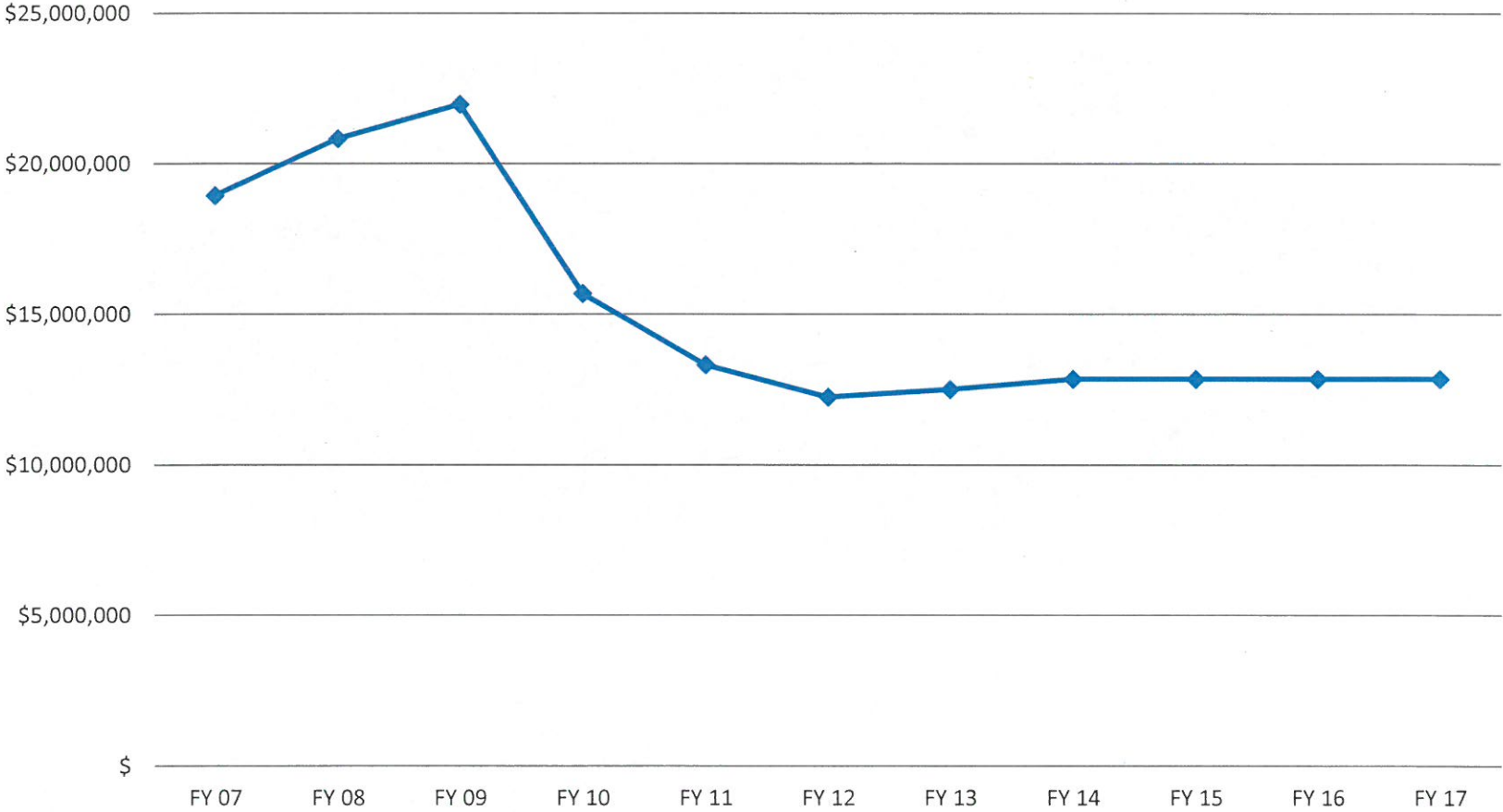
- 397,000 licensed anglers
- 178,000 licensed hunters
- 236,000 registered boats
- 64,000 registered OHVs and snowmobiles



# DNR State General Fund Allocations

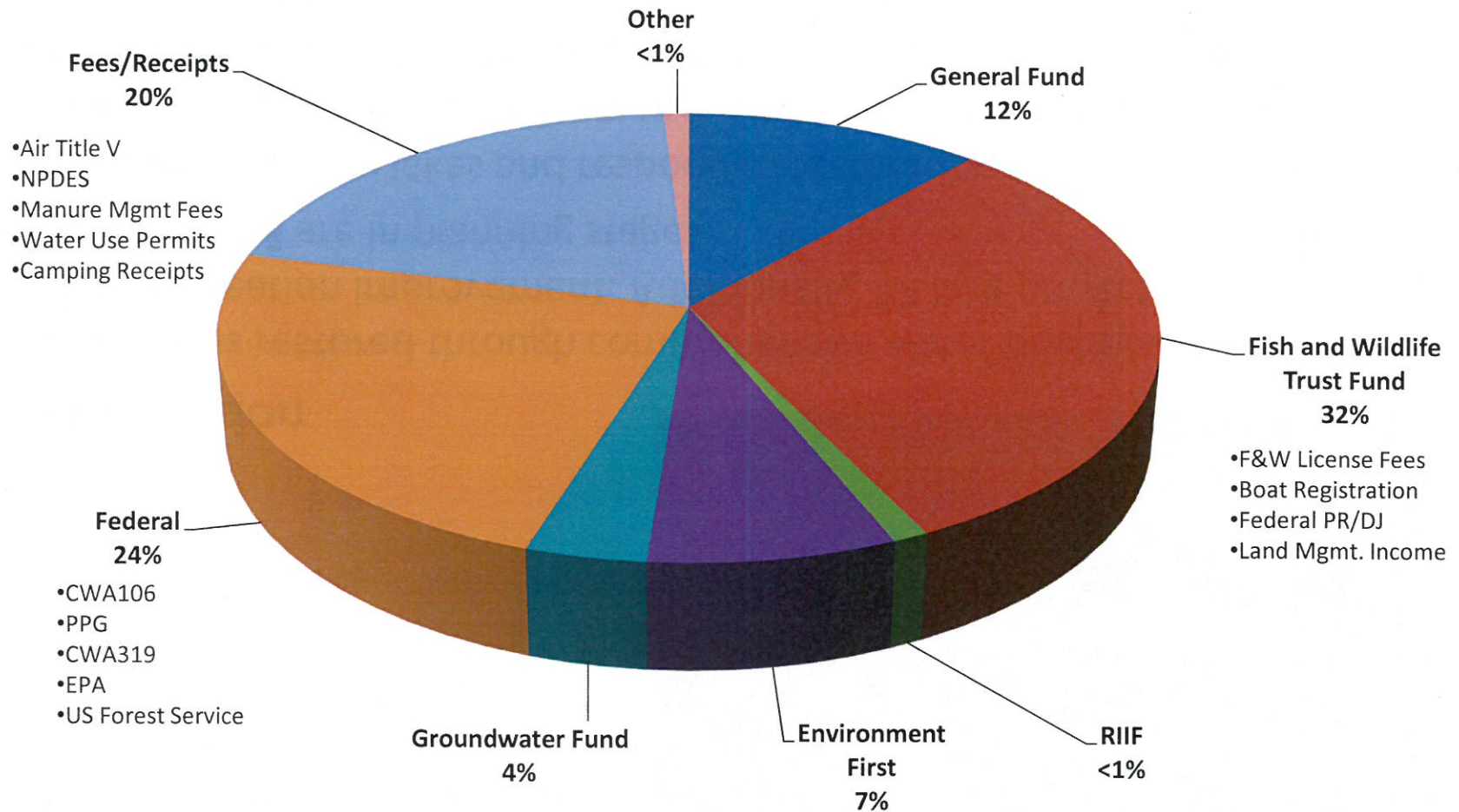


# General Fund History





# Expenditures by Funding Sources



**FY 16 DNR Operations -- \$132 million**

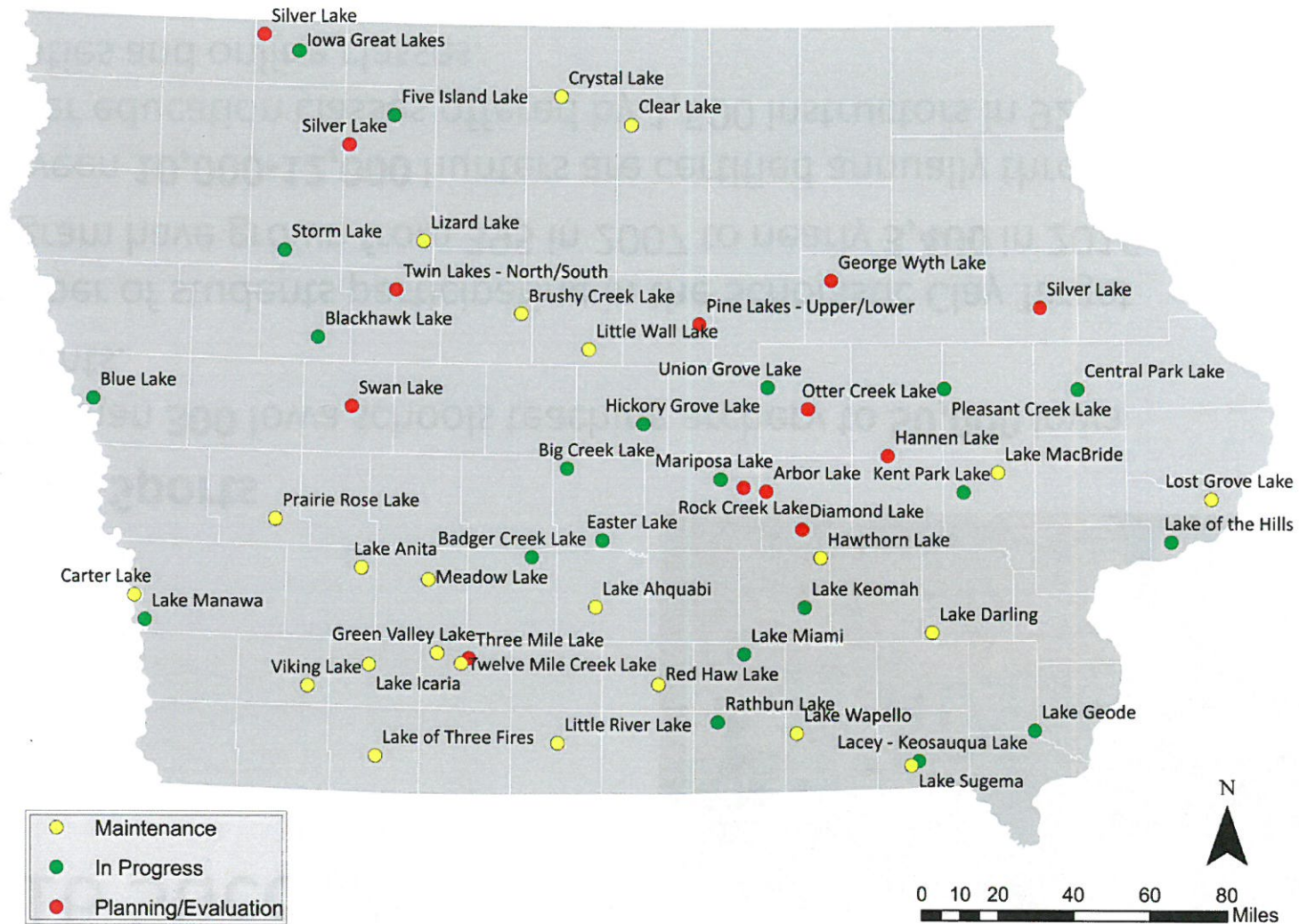
# 2016 Successes



## Lake Restoration

- **24 Iowa lakes restored** through comprehensive water quality and outdoor recreation improvement. Additionally, **22** lake projects are in progress and **13** are in planning stages.
- Iowans value healthy lakes and respond to restoration efforts with significant increase in recreational use. Visits to Iowa's lakes generate **\$1.9 billion** in economic activity each year.
- **Improves water quality** and complements the Nutrient Reduction Strategy by working in targeted watersheds for publicly-owned lakes.

# 2016 Successes – Lake Restoration



# 2016 Successes



## Shooting Sports

- More than **300** Iowa schools teaching archery to **50,000** Iowa students.
- Number of students participating in the Scholastic Clay Target program have grown from 395 in 2007 to nearly **3,400** in 2016.
- Between **10,000-12,000** hunters are certified annually through hunter education classes offered by 1,500 instructors in 92 counties and online classes.

# 2016 Successes



## Nutrient Management

- Partnership among DNR, IDALs, ISU and NREC to digitally map more than **9 million acres** of structural practices including terraces, ponds, grassed waterways, etc.
- **60 percent** increase in facilities studying nutrient removal technologies as part of their NPDES permits.
- **Triple the number** of wastewater treatment facilities now providing water quality data in the last year.
- **Minimized nutrient runoff** and erosion on DNR land through cover crops and best management practices.

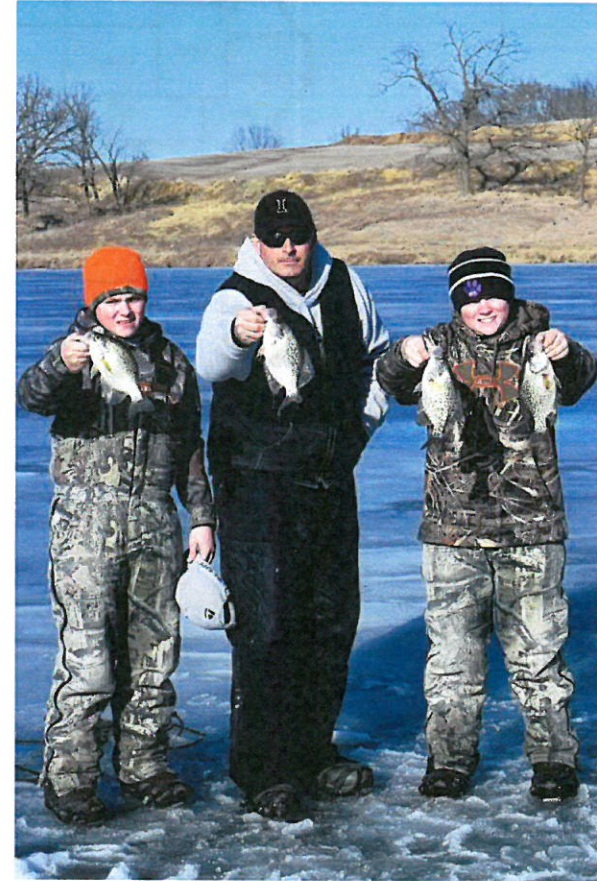
# FY 2018 Budget

Appropriation Name	FY 17 Appropriation	FY 18 Department Request
<b>GENERAL FUND</b>		
Department Operations	\$12,862,307	\$12,862,307
Floodplain Management Program	\$1,950,000	\$1,950,000
Forestry Health Management	\$500,000	\$500,000
<b>Total General Fund Appropriations</b>	<b>\$15,312,307</b>	<b>\$15,312,307</b>
<b>INFRASTRUCTURE</b>		
Lake Water Quality Improvements	\$9,600,000	\$9,600,000
Water Trails/Lowhead Dam Programs	\$1,000,000	\$1,000,000
Park Infrastructure Improvements	\$3,000,000	\$3,000,000
<b>Total Infrastructure Appropriations</b>	<b>\$13,600,000</b>	<b>\$13,600,000</b>
<b>ENVIRONMENT FIRST</b>		
Resource Enhancement and Protection	\$16,000,000	\$16,000,000
Ambient Air Quality Monitoring	\$425,000	\$425,000
Water Quality Monitoring	\$2,955,000	\$2,955,000
GIS Data for Watershed Managers	\$195,000	\$195,000
Park Operations and Maintenance	\$6,235,000	\$6,235,000
Water Quantity	\$495,000	\$495,000
Animal Feeding Operations	\$1,320,000	\$1,320,000
Water Supply Appropriation	\$500,000	\$500,000
Geological and Water Survey	\$200,000	\$200,000
<b>Total Environment First Appropriations</b>	<b>\$28,325,000</b>	<b>\$28,325,000</b>
<b>NON-GENERAL FUND</b>		
Fish and Wildlife Operations	\$43,147,993	\$43,147,993
Groundwater Fund	\$3,455,832	\$3,455,832
UST Administration Match	\$200,000	\$200,000
Snowmobile Transfer to Fish and Wildlife	\$100,000	\$100,000
<b>Total Non General Fund Appropriations</b>	<b>\$46,903,825</b>	<b>\$46,903,825</b>
<b>TOTAL DEPARTMENT</b>	<b>\$104,141,132</b>	<b>\$104,141,132</b>

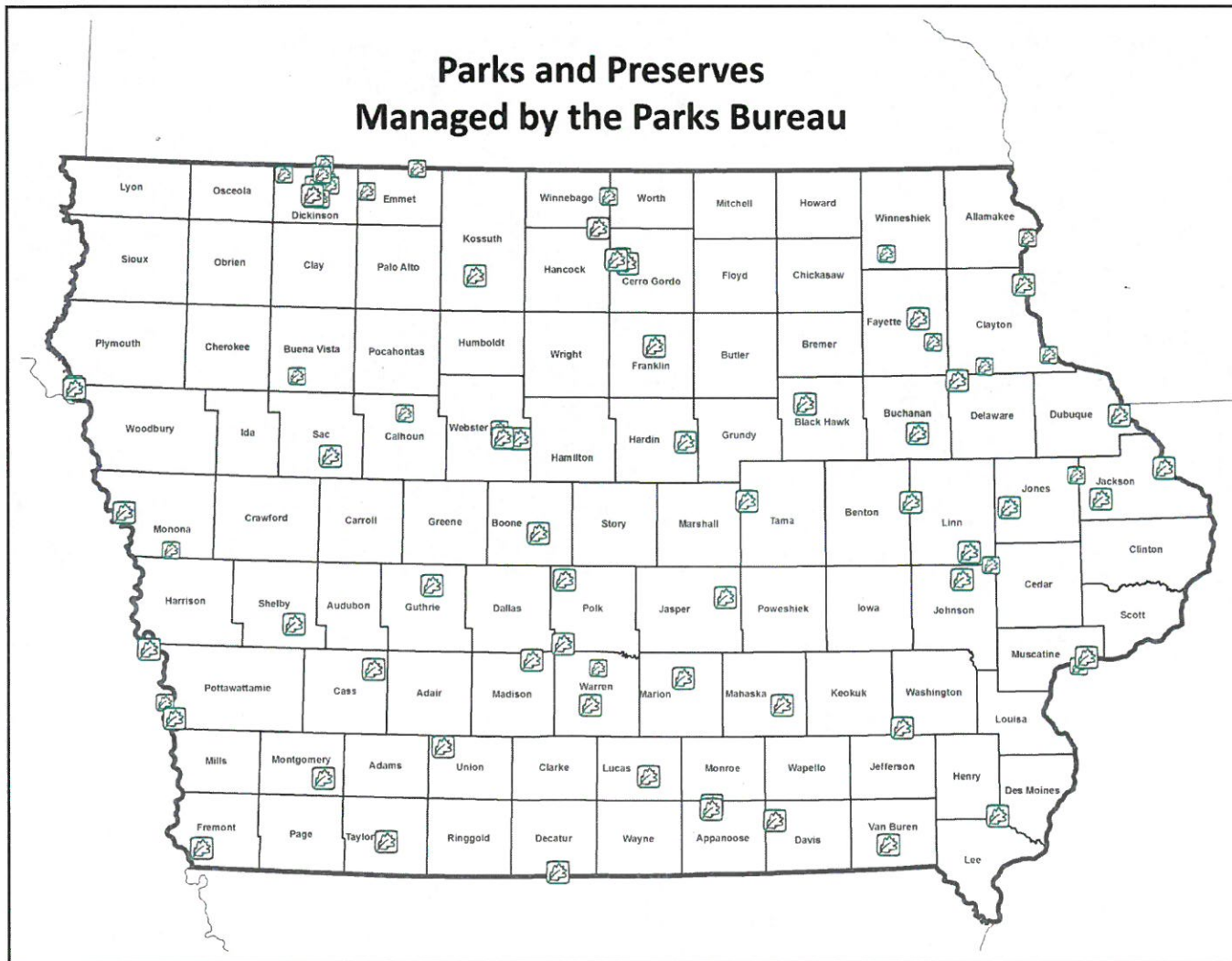


# Challenge Areas for FY2018

- State Parks Funding
- Fish & Wildlife Trust Fund
- Conservation Lands

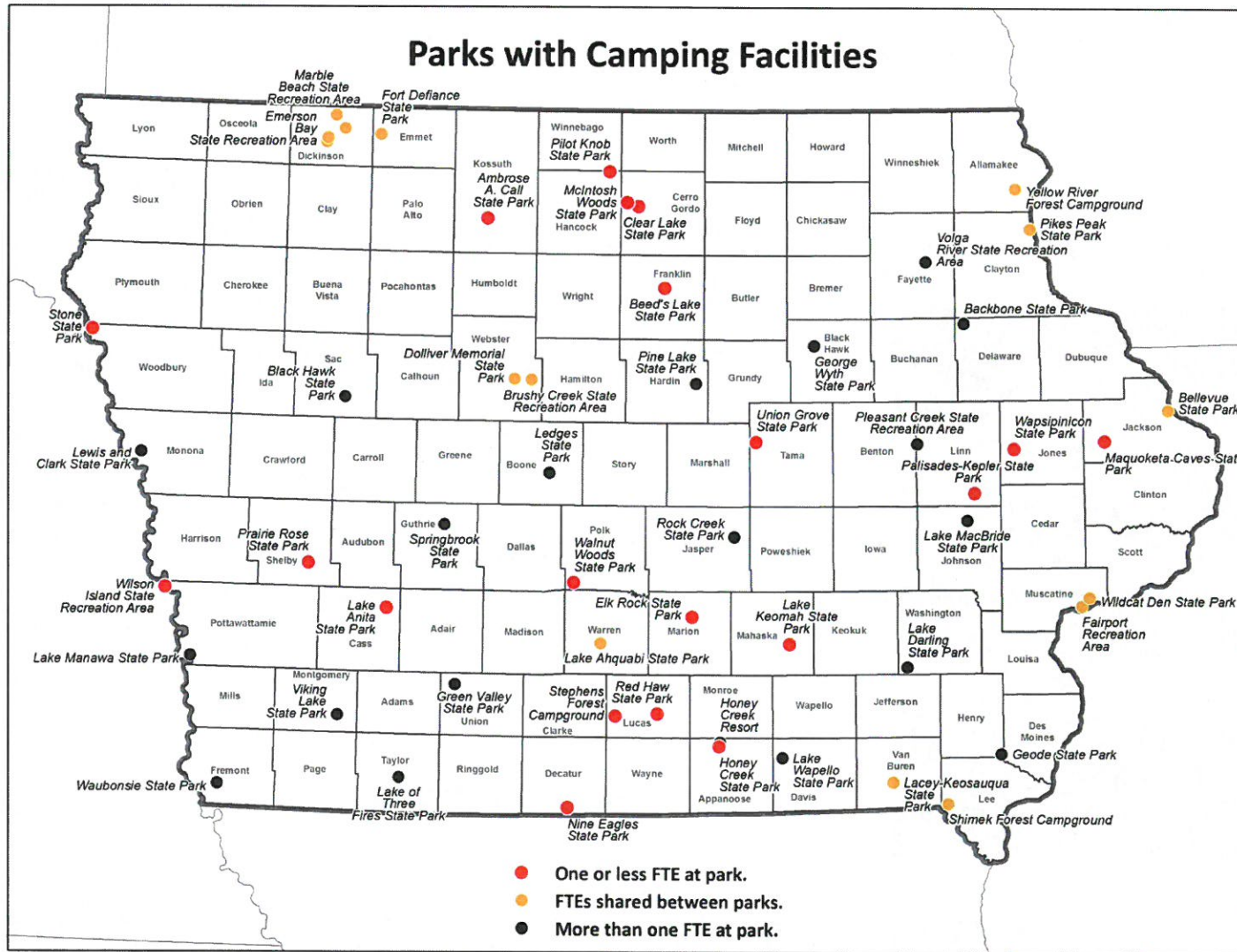


# Challenge: State Parks Operations





# Challenge: State Parks Operations



# Challenge: Fish & Wildlife Trust Fund

Revenues are relatively stable, but expenses are increasing.

- **Revenues:** Fish and wildlife licenses, grants, rent, donations
- **Operations:** Staff, equipment, boats, vehicles, contracts
- **Capital Investment/Improvement:**
  - Construction, land improvement, access
  - Code-required expenses like county habitat grants, property taxes, electronic licensing system, law enforcement retirements



To maintain solvency of the trust fund and make needed infrastructure improvements: 10-15% program cuts by next year.

# Challenge: Conservation Lands

## DNR Land Management

The amount of land owned by the state and managed by the DNR for conservation purposes is **374,500 acres**, equaling just **1 percent** of surface area in Iowa.



### Marginal land makes great habitat:

- **14 percent** is water (lakes, streams)
- **40 percent** is forested
- **17 percent** is classified as hydric soils (prone to flooding, saturation)
- **37 percent** is classified as Highly Erodible  
(land cover can fall into multiple categories)

And DNR managed land has an average **Corn Suitability Rating of 32**.

**DNR pays its way:** The amount of property taxes paid annually by the DNR to Iowa counties is **\$938,252**.

**DNR Protects:** DNR lands provide conservation for species of concern, public access and assistance to nutrient reduction strategies.

# Department Collaborations

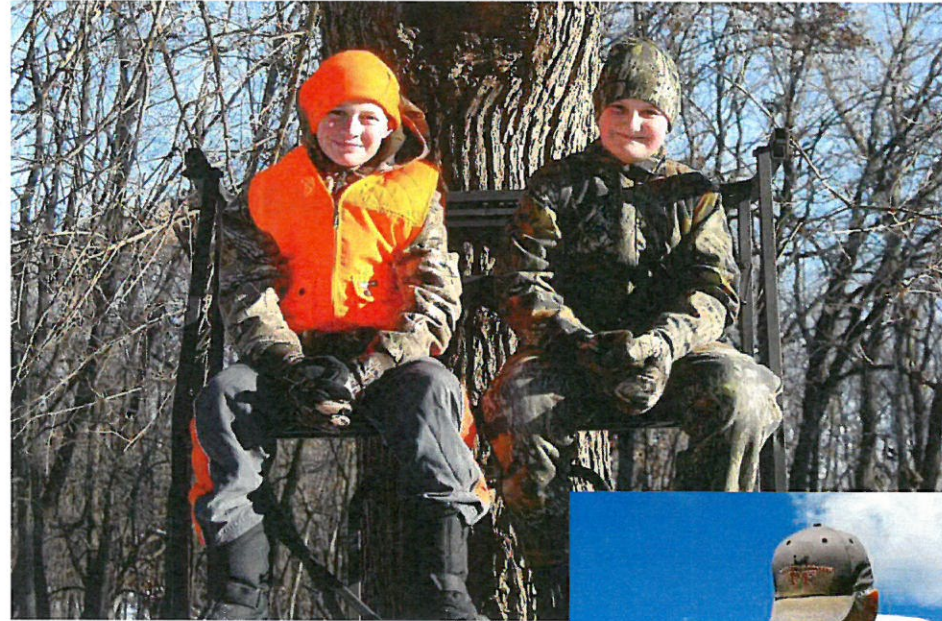
- Economic Development Authority
  - New business development
  - Iowa Tourism partnership
- Iowa Finance Authority
  - #1 State Revolving Fund program in the nation
- Dept. of Agriculture & Land Stewardship
  - Water quality projects (NRCS, SWCD, EPA)
  - Nutrient reduction strategy (with ISU)
- Office of the Chief Information Officer
  - IT consolidation and coordination
- Iowa Public Television
  - Iowa Outdoors TV reaching 70,000 viewers



# Department Collaborations

- Iowa Workforce Development
  - IOSHA assistance with health and safety
- Regents-GSB
  - Research and collaboration
- Department of Management
  - LEAN activities
- Dept. of Transportation
  - Stream mitigation, trails and prairie projects
- Dept. of Cultural Affairs
  - Great Places – coaching and grant review, community grants
  - Good Earth at Blood Run – new state park





- Thank you.
- Questions and comments?