

Agricultural Drainage Well Water Quality Assistance Fund

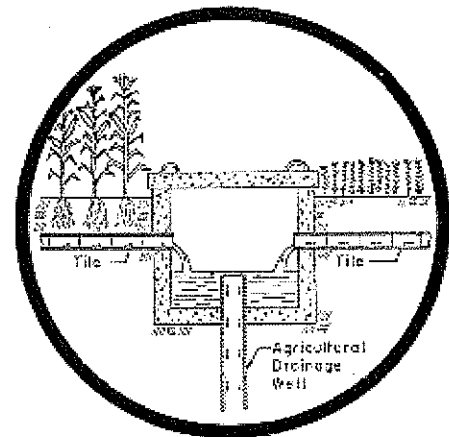
Agricultural drainage wells were developed in the early to mid 1900's and discharge cropland tile drainage water to underground aquifers. The fund was established in 1997 and protects drinking water aquifers by cost-sharing with landowners to close agricultural drainage wells and develop alternative drainage outlets to surface streams or install alternative management practices. Projects are typically constructed through drainage districts, although some projects are undertaken by individual landowners.

- 296 agricultural drainage wells (ADWs) in Iowa registered in 1987
- 62 ADWs closed without assistance fund or determined by IDNR to not be functioning ADWs
- 102 ADWs closed to date using \$5.8 million of assistance fund
- 186 continued use permits issued by the IDNR that will expire in 2009
- 20 ADWs closures are currently under construction
- 12 ADWs closures are currently under design for planned closures with cost-share funds
- 76 ADWs existing without current or planned projects



Funding Status

• FY08 appropriation	\$1,480,000
• Carried Forward 6/30/07	\$1,499,000
• Expenditures 7/1 to 12/31/07	\$ 302,000
• Obligated/Encumbered	\$2,677,000
• Unobligated	\$0
• Unfunded Applications	\$16,800,000



For further information, contact:

Dean Lemke, Chief
Water Resources Bureau
Iowa Department of Agriculture and Land Stewardship
515-281-3963
Dean.Lemke@idals.state.ia.us

Karey Claghorn
Deputy Secretary of Agriculture
Acting Director, Division of Soil Conservation
515-281-5322
Karey.Claghorn@idals.state.ia.us

Iowa Conservation Reserve Enhancement Program (CREP)

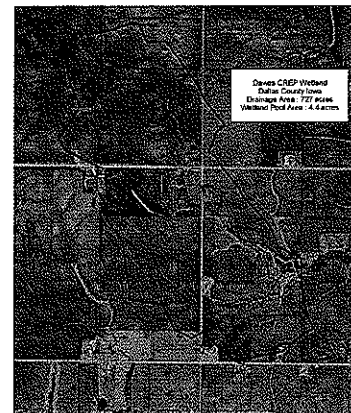
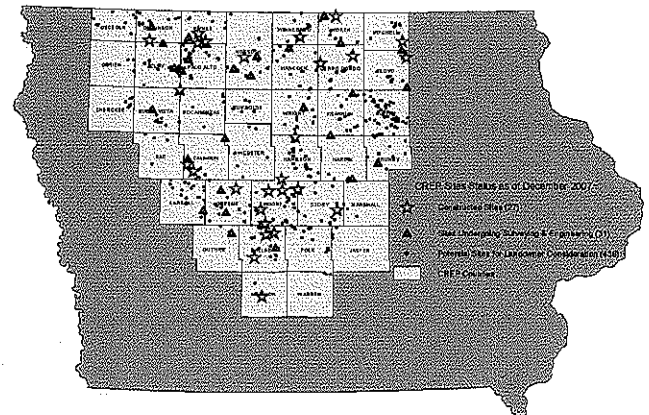
The Iowa Conservation Reserve Enhancement Program (CREP) was initiated in 2000 and is a joint effort of the Iowa Department of Agriculture and Land Stewardship and the USDA Farm Service Agency to remove nitrate to protect Iowa drinking water and reduce hypoxia in the Gulf of Mexico. It is a highly targeted water quality program focusing on the reduction of nitrate loads to surface waters through the construction of strategically located and designed wetlands that intercept tile-drainage water from upper-lying cropped lands.

- Research and monitoring by Iowa State University has shown that CREP wetlands will remove 40-90% of the nitrate in tile-drainage water.
- Wetlands constructed to date (27 sites) and those currently being designed (28 sites) are estimated to remove over 43,000 tons of nitrogen over design life. These wetlands will provide water quality protection for 70,083 acres of land.
- Over 400 potential sites exist for landowner consideration
- Average lifetime nitrogen removal costs : \$0.23/lb removed, \$1.76/acre treated

Funding Status:

- State funds are matched 4:1 with Federal funds
- FY08 appropriation \$1,500,000
- Carry forward June 30, 2007 \$4,732,000
- USDA Construction Expenses Reimbursements (FSA) \$ 508,000
- Expenditures July 1 to Dec. 31, 2007 \$ 782,000
- Obligated/encumbered \$5,958,000
- Unobligated \$ 0

Current Iowa CREP - Nitrate Removal Wetlands



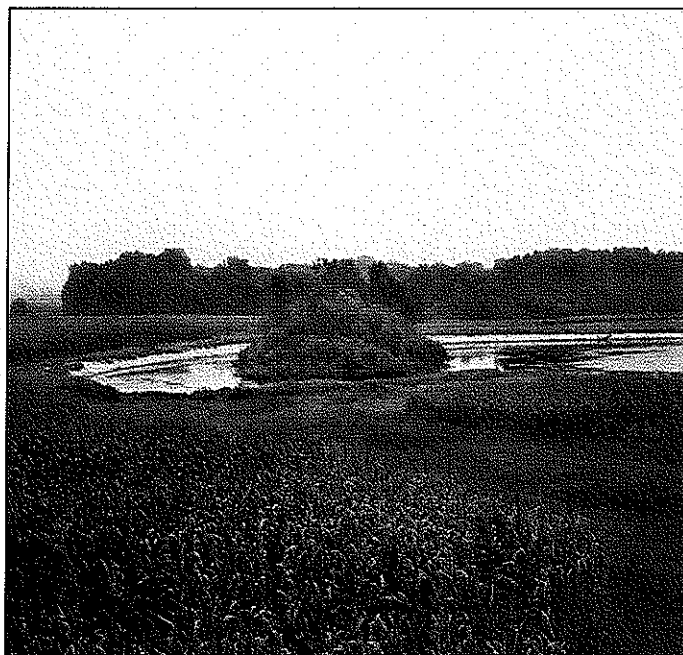
For further information, contact:

Dean Lemke, Chief
 Water Resources Bureau
 Iowa Department of Agriculture and Land Stewardship
 515-281-3963
Dean.Lemke@idals.state.ia.us

Karey Claghorn, Deputy Secretary of Agriculture
 Acting Director - Division of Soil Conservation
 Iowa Department of Agriculture and Land Stewardship
 515-281-5322
Karey.Claghorn@idals.state.ia.us

Conservation Reserve Program (CRP)

The Conservation Reserve Program was established in 2000. Program initiatives are delivered through local Soil and Water Conservation Districts (SWCDs) to leverage dollars for federal conservation programs, increasing Iowa's overall participation in both state and federal programs. Locally-led initiatives prioritize and target sensitive areas, by providing funds and resources to protect our soil and water resources.



- Iowa leads the nation in the USDA Continuous Conservation Reserve Program (CRP) with 541,688 acres enrolled.
- Enrolled 167 acres in Iowa buffers (non-CRP).
- Planting 530 acres of trees on CRP to keep it in permanent cover.
- Planned 4,158 acres of grazing on CRP that has contracts that expire in 2007 & 2008.
- Provided technical assistance in districts to enroll CRP and install Federal Environmental Quality Incentive Program (EQIP) practices.
- Generated \$445,513.06 of landowner investment and over \$20 million in federal funds.

Funding:

FY08 Appropriation	\$1,500,000
Carry Forward June 30, 2007	\$2,889,998
Expenditures July 1 to Dec. 31, 2007	\$1,603,594
Obligated/encumbered	\$2,592,315
Agreements/Contracts to be Signed	\$ 194,089
Unobligated January 1, 2008	\$ 0.00



For further information, contact:

Jim Gillespie, Chief
 Field Services Bureau
 Iowa Department of Agriculture and Land Stewardship
 515-281-7043
Jim.Gillespie@idals.state.ia.us

Karey Claghorn, Deputy Secretary of Agriculture
 Division of Soil Conservation
 Iowa Department of Agriculture and Land Stewardship
 515-281-5322
Karey.Claghorn@idals.state.ia.us

Iowa Conservation Cost Share Program (IFIP)

Iowa's Conservation Cost Share program was established in 1973 for the purpose of establishing soil and water conservation practices to reduce erosion and protect productivity on agricultural land. Applicants are required to enter into maintenance agreements to insure long-term success and performance. Funds are administered locally by Iowa's 100 Soil and Water Conservation Districts (SWCD's).

- Since July 1, 2007, the Division has processed 2,498 applications from landowners to protect 23,011 acres.
- Soil loss was reduced by 15,808 tons/year.
- In October 2007, 58 SWCD's made requests for \$7,798,917 in supplemental funds with only \$2,523,484 available, leaving \$5,275,433 of unmet demand.
- Landowners invest 50-75% of their own money on these practices.



Funding:

- | | |
|--|--------------|
| • FY08 Appropriation | \$ 7,000,000 |
| • Carry Forward June 30, 2007 | \$ 4,432,733 |
| • Expenditures July 1 to Dec. 31, 2007 | \$ 2,716,354 |
| • Obligated/Encumbered | \$ 8,716,379 |
| • Unobligated January 1, 2008 | \$ 0.00 |

Landowner demand exceeds the amount of cost share by over \$5 million for conservation work that is matched by the landowner.

For further information, contact:

Jim Gillespie, Chief
Field Services Bureau
Iowa Department of Agriculture and Land Stewardship
515-281-7043
Jim.Gillespie@idals.state.ia.us



Karey Claghorn, Deputy Secretary of Agriculture
Division of Soil Conservation
Iowa Department of Agriculture and Land Stewardship
515-281-5322
karey.claghorn@idals.state.ia.us

Farm Management Demonstrations (ILF & IFLM) Integrated Farm and Livestock Management Iowa Learning Farm

The Integrated Farm and Livestock Management demonstration program was initiated in 2000 as part of the Iowa Water Quality Initiative to demonstrate that conservation systems are adaptable to farming operations and effective in reducing nutrient and sediment loading into Iowa's water bodies. New and emerging technologies are demonstrated on private farmland to refine management input to reduce soil losses, maximize residue cover for erosion protection and potential use for bio-energy production, enhance soil quality, and reduce nutrient and sediment loading to Iowa's rivers, lakes, and streams. Resources and infrastructure are leveraged to provide effective delivery for emerging technologies and other important issues such as row crop residue harvest for biofuels, cover crops and perennial living mulch, and nutrient transport from cropped landscapes

- **Iowa Learning Farm, conducted by Iowa State University, is building a "Culture of Conservation"** through a unique partnership of farmers, agencies, conservation groups, agribusiness, the research community, and the public that supports continuing change for improved water and soil quality in Iowa and the nation.
 - Improved tillage and residue management field demonstrations with 30 cooperators in Iowa's 5 major soil associations allowed farmers to evaluate agronomic and economic information and share local wisdom.
 - Water quality modeling has been coordinated on 5 of the cooperator farms to estimate pollutant load reductions.
 - A strong statewide awareness campaign utilizing a farmer-to-farmer, Iowan-to-Iowan grassroots approach included public events in 33 counties in 2007.
 - Education and outreach to nearly 5,300 individuals last year strengthened society's commitment to the conservation of natural resources to sustain our standard of living and quality of life.
- **Iowa Soybean Association's agriculture and environment performance program** was allocated \$400,000 by legislative earmark in 2008.

Funding:	FY08 Appropriation	\$ 850,000
	• Fund Balance 7/1/07	\$ 1,252,040
	• Expenditures to Date	\$ 603,949
	• IDNR & NRCS Contribution	\$ 148,000
	• Obligated/Encumbered	\$ 775,689
	• Unobligated	\$ 71



For more information, contact:

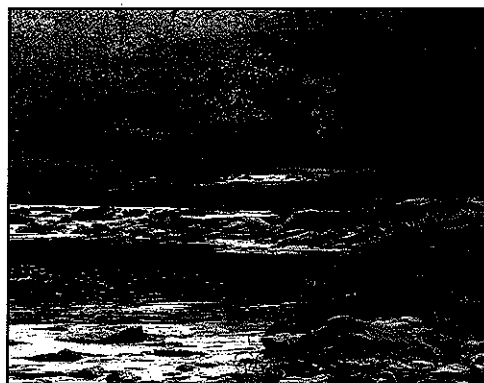
Dean Lemke, Chief, Water Resources Bureau
Division of Soil Conservation
Iowa Department of Agriculture and Land Stewardship
515-281-3963 or Dean.Lemke@idals.state.ia.us

Karey Claghorn, Deputy Secretary of Agriculture
Acting Director, Division of Soil Conservation
Iowa Department of Agriculture and Land Stewardship
515-281-5322 or Karey.Claghorn@idals.state.ia.us

Watershed Protection Fund (WSPF)

The Watershed Protection Fund was initiated in 2000. Watershed protection projects are established to target resources and to reduce soil erosion, protect water quality, provide flood control, and protect natural resources. Projects provide vital financial assistance for the development of watershed initiatives and water quality improvement measures. Many of these projects are also supported through grants provided by the IDNR

Section 319 program. IDALS-DSC and IDNR work together in the support of these projects in order to achieve the maximum watershed improvements and water quality benefits with the funds available to each agency.



- Currently 61 WSPF supported projects in 53 Soil and Water Conservation Districts (SWCDs).
- State funds are cost shared at rates up to 75% with 25% applicant's cost.
- Processed 120 practice claims which have leveraged \$678,743.62 from other sources.
- Protected 2,417 acres, with soil loss reduction of 6,715 tons/year.
- Sediment delivery reduction to a water body of 10,375 tons/year
- WSPF supported projects have leveraged approximately \$2,500,000.00 in FY2008 IDNR Section 319 program funds

Funding:

• FY08 Appropriation	\$2,550,000.00
• Carry Forward June 30, 2007	\$3,706,510.06
• Expenditures July 1 to Dec. 31, 2007	\$1,159,879.33
• Obligated/Encumbered	\$3,881,875.75
• Agreements/Contracts to be Signed	\$1,214,754.98
• Unobligated January 1, 2008	\$0.00

For further information, contact:

Jim Gillespie, Field Services Bureau Chief
 Division of Soil Conservation
 Iowa Department of Agriculture and Land Stewardship
 515-281-7043
Jim.Gillespie@idals.state.ia.us

Karey Claghorn, Deputy Secretary of Agriculture
 Division of Soil Conservation
 Iowa Department of Agriculture and Land Stewardship
 515-281-5322
Karey.Claghorn@idals.state.ia.us