



EARLY CHILDHOOD IOWA

Overview–

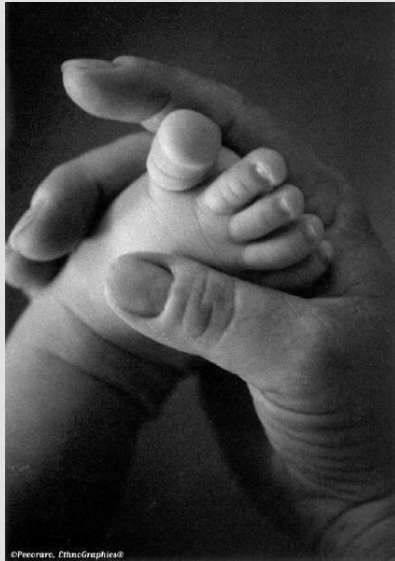
Education Appropriations SubCommittee

EARLY CHILDHOOD SYSTEM DEVELOPMENT WORK

UPDATED 2-24-15

IOWA'S VISION FOR EARLY CARE, HEALTH, AND EDUCATION

“Every child, beginning at birth, will be healthy and successful.”



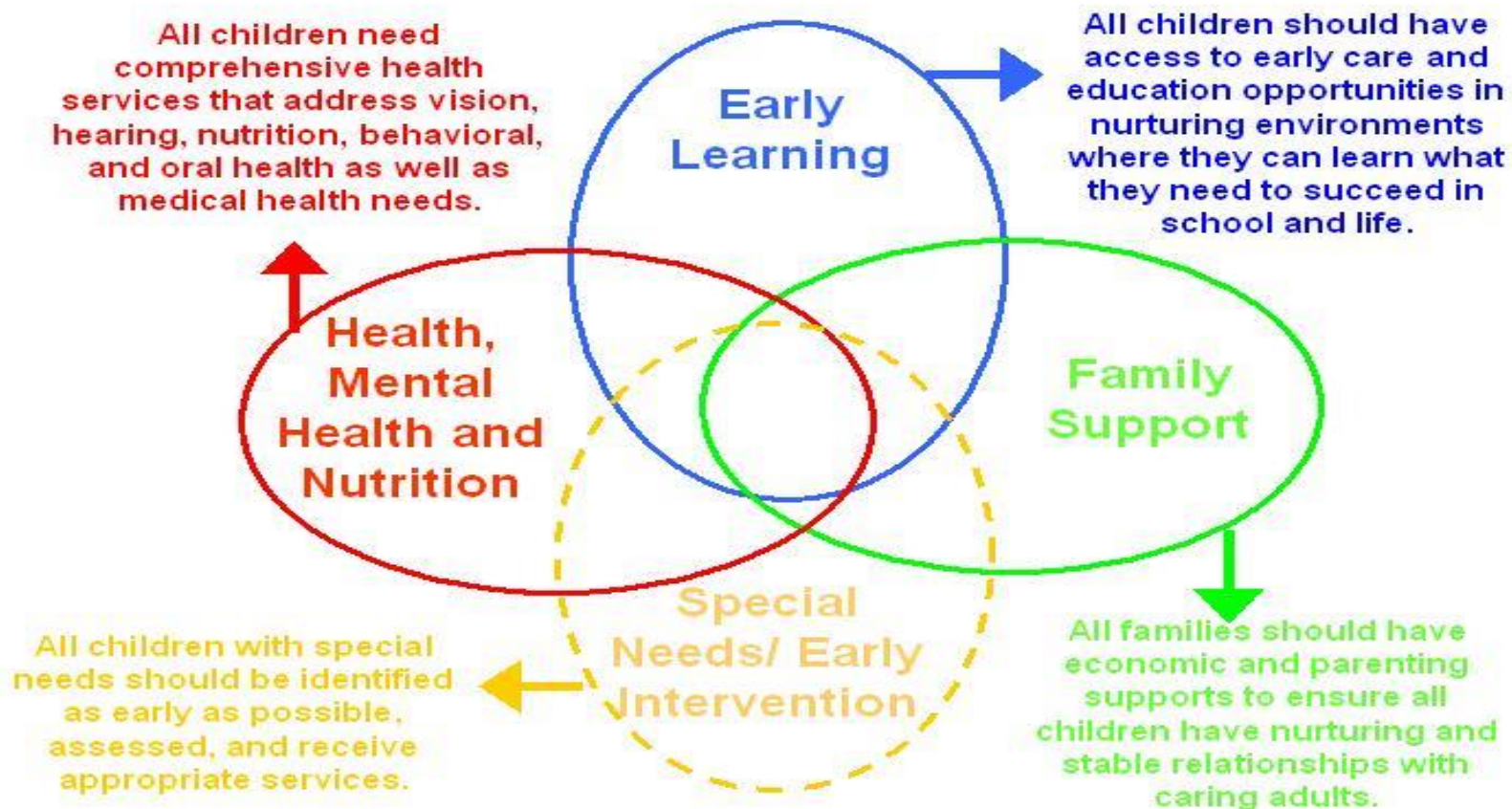
- Adopted by state agencies and public and private organizations

PURPOSE OF EARLY CHILDHOOD IOWA

- Build an early care, health and education system: State and communities work together
 - Empower individuals, communities, and state-level partners to achieve desired results
 - Create a partnership between communities and state-level partners to support children zero through age five and their families



FRAMEWORK



EARLY CHILDHOOD IOWA STATE BOARD

Composition:

- Citizen members (15)
- State Department Directors or designee
 - ✓ Economic Development Authority
 - ✓ Education
 - ✓ Human Rights
 - ✓ Human Services
 - ✓ Public Health
 - ✓ Workforce Development
- Legislators (4) – Ex Officio



ECI BOARD RESPONSIBILITIES

- Promote a vision achieved through strategic planning, funding identification, guidance, and decision-making authority for a comprehensive early care, education, health, and human services system in the state
- Promote collaboration among state and local early care, education, health and human service systems
- Oversee state and local efforts
- Provide oversight of early childhood Iowa areas
- Adopt common performance measures and data reporting requirements for services, programs and activities provided by area boards

RESULT AREAS/INDICATORS

- **Healthy Children**
 - **Children Ready to Succeed in School**
 - **Safe and Supportive Communities**
 - **Secure and Nurturing Families**
 - **Secure and Nurturing Early Learning Environments**
- Low Birth Weight
 - Immunized Children
 - Pre-literacy Skills
 - Quality Early Learning Environments
 - Serious Crime
 - Juvenile arrests
 - Child Deaths
 - Unemployment rate
 - Children in Poverty
 - Incidence of child abuse
 - Teen Births
 - Domestic Violence Rate
 - Accredited Family Support Programs in Iowa
 - Child Abuse in a Child Care Setting
 - Availability of Child Care
 - Working Parents
 - Quality Child Care Ratings

The ECI State Annual Report provides data for each of the above indicators.

STATE TECHNICAL ASSISTANCE TEAM

- Interagency Representation
 - Department of Education
 - Department of Human Rights
 - **Department of Human Services**
 - **Department of Management**
 - **Department of Public Health**
 - Workforce Development
 - Economic Development Authority
- Staff time in kind contribution from departments
- Team provides technical assistance to communities and ECI State Board

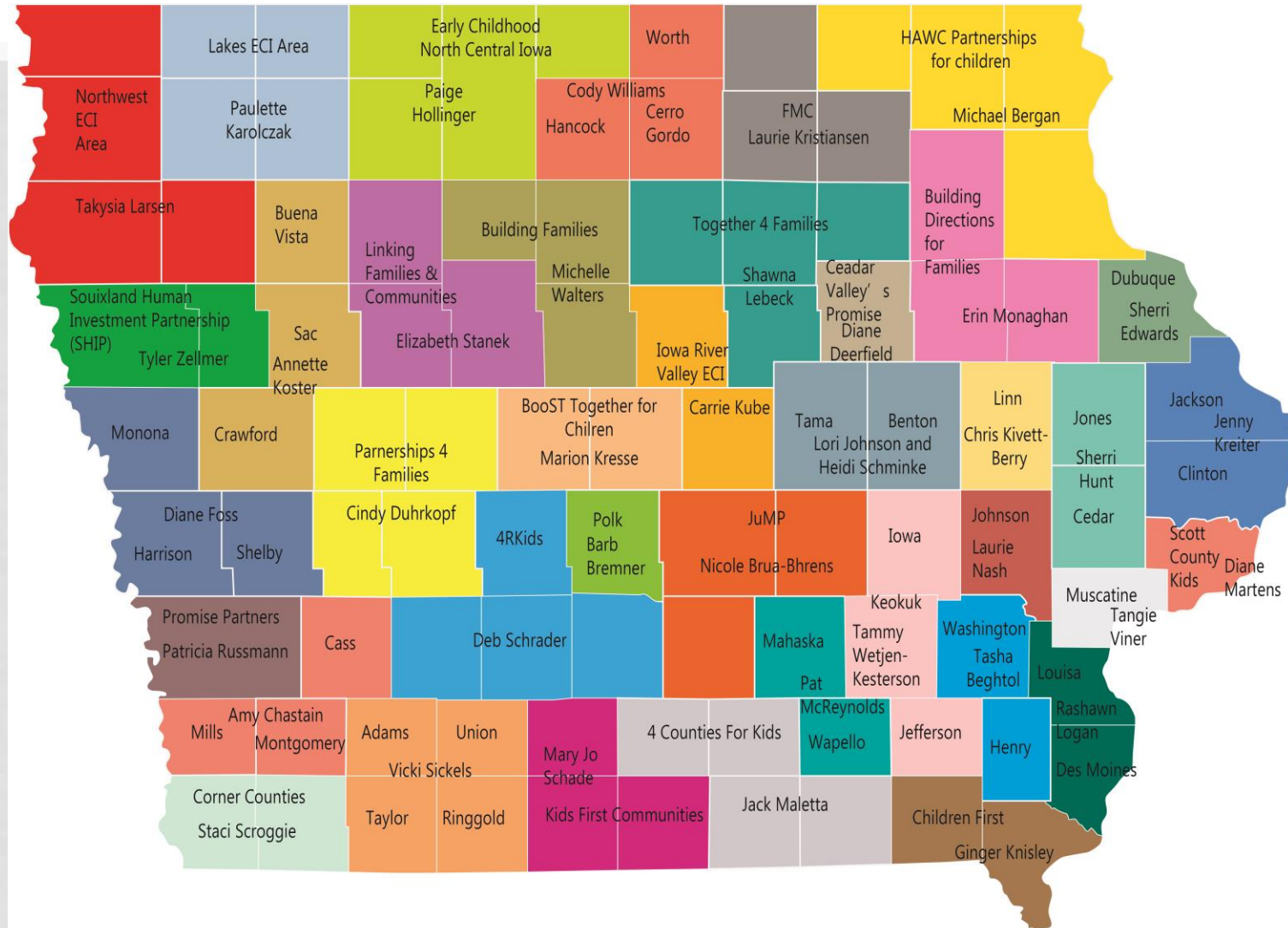


EARLY CHILDHOOD IOWA AREAS



- Beginning FY'14, there are 39 areas, down from 58 in 2010
- Geographically self-defined within state-legislated parameters
- Develop and implement comprehensive, community plans
- Commit to reaching results for young children and their families

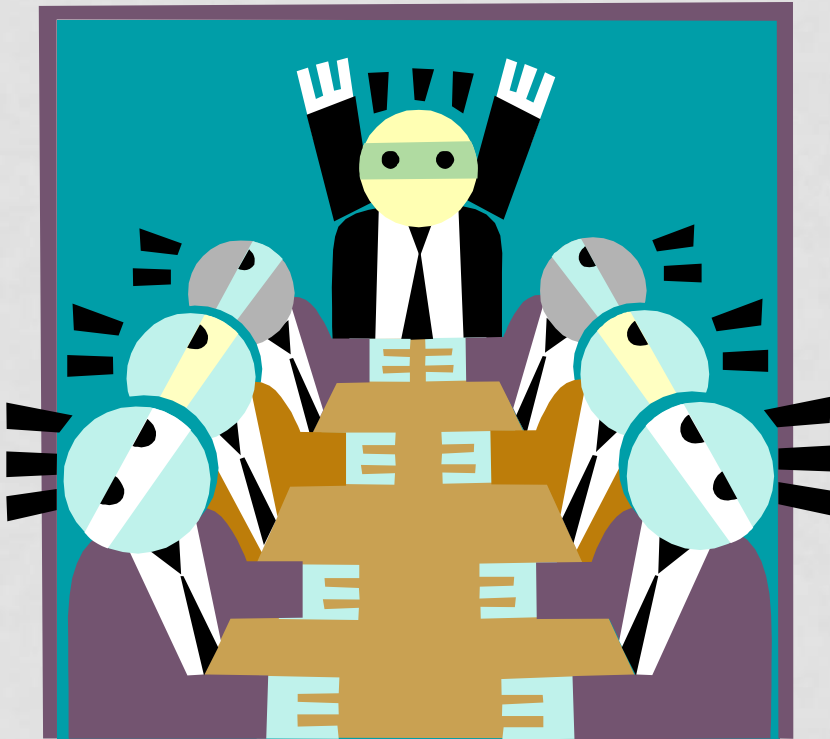
Early Childhood Iowa Areas



EARLY CHILDHOOD IOWA AREA BOARD OVERVIEW



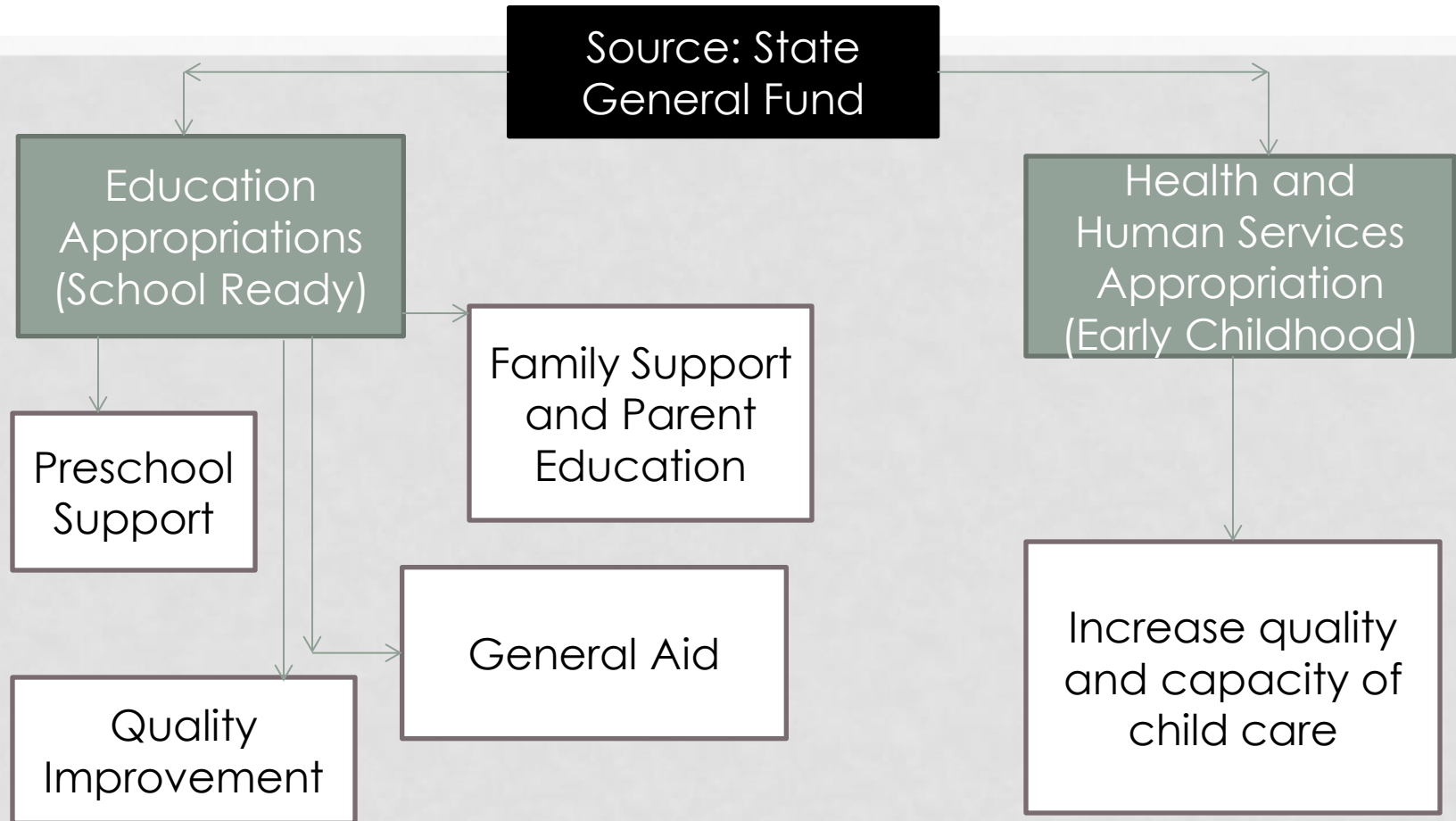
WHAT DOES THE BOARD DO?



- Legal & Fiduciary
- Planning & Oversight
- Resource Development
- Representation



ECI FUNDING – FY 15

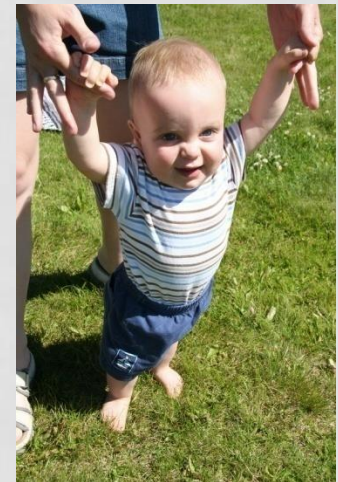


School Ready

Source: State General Fund

- Support comprehensive services for children ages zero through five. Legislated categories are:
 - Family Support for children Prenatal thru age 3; home visitation component (Tool FF)
 - Preschool Support for Low-Income Families (Tool CC)
 - Quality Improvements (Tool II)
 - Other Early Care, Health and Education Services
 - Administrative funds (Up to 3%)

Tool G





EARLY CHILDHOOD

Source: State General
Fund (beg. FY '14)

- Enhance quality child care capacity in support of parent capability to obtain or retain employment, including:
 - regular child care, including recruitment of providers
 - child care for mildly ill children
 - second or third shift child care
 - infant child care
 - training to increase quality for center-based and home-based child care providers

HEALTHY CHILDREN – FY 14

(EXAMPLE)



- 19 of the 39 ECI areas supported dental screens
- \$570,903 total, of which \$341,110 is ECI; \$229,783 is non-ECI
- Serving 17,384
- \$33 average cost per child

CHILDREN READY TO SUCCEED IN SCHOOL FY'14

(EXAMPLE)

- 36 of the 39 ECI Area support tuition assistance
- \$8,128,225 total funds; of which \$3,169,885 is ECI and \$4,958,340 is non-ECI
- 3876 children received tuition assistance
- \$2,097 average cost per child



SAFE AND NURTURING FAMILIES (FY '14) - EXAMPLE

- Every ECI Area support family support services
- \$20,645,981 total funds; of which \$13,944,634 is ECI and \$6,701,347 is non-ECI
- 58% of the families have a primary caregiver with a high school diploma or less education
- 42% of the families served are married
- 28% of the primary caregivers are non-Caucasian



OFFICE OF EARLY CHILDHOOD IOWA

**Shanell Wagler,
Administrator**

(515)281-4321

Shanell.wagler@iowa.gov

**Jeff Anderson,
Facilitator**

(515) 242-5895

Jeffrey.anderson@iowa.gov

www.earlychildhoodiowa.org