

February 6, 2007

Division of Soil Conservation
Iowa Department of Agriculture and Land Stewardship

Infrastructure Appropriation Askings / Governor's Recommendations
FY 2008

Program	Current	Increase Sought	Department Request	Governor Recommends
Conservation Cost Share	5,500,000	4,500,000	10,000,000	8,000,000
Watershed Protection Program	2,700,000	2,700,000	5,400,000	2,700,000
District Initiatives	2,000,000	0	2,000,000	2,000,000
Conservation Reserve Enhancement Program (CREP)	1,500,000	0	1,500,000	1,500,000
Ag Drainage Wells	500,000	2,000,000	2,500,000	500,000
Integrated Farm & Livestock Management – Iowa Learning Farms	850,000	750,000	1,600,000	850,000
Total – Division of Soil Conservation	13,050,000	9,950,000	23,000,000	15,500,000
Other Infrastructure Funding				
Loess Hills/Hungry Canyon	600,000	0	600,000	600,000
Southern Iowa Development & Conservation Authority	300,000	0	300,000	300,000
REAP Infrastructure	11,000,000	0	0	11,000,000
IDALS 20% share	2,200,000			2,200,000

Iowa Conservation Cost Share Program

Iowa's Conservation Cost Share program was established in 1973 for the purpose of establishing soil and water conservation practices to reduce erosion occurring on agricultural land. Applicants are required to enter into maintenance agreements to insure long-term success and performance. Funds are administered locally by Iowa's 100 Soil and Water Conservation Districts (SWCDs).

- To date, the Division has processed 2,498 applications from landowners to protect 13,486 acres.
- Soil loss was reduced by 15,000 tons/year.
- In August 2006, 63 SWCDs made requests for \$8,868,000 in supplemental funds with only \$1,692,000 available, leaving \$7,175,000 of unmet demand.
- The \$2,173,000 million leveraged \$12,813,000 landowner investment in these practices.



Funding:

- Cost share dollars are usually matched 50%.
- FY07 Appropriation \$ 5,500,000
- FY08 Funding Request \$10,000,000
- FY08 Governor's Recommendation \$ 8,000,000
- Fund Balance July 1, 2006 \$ 9,132,000
- Expenditures to date \$ 2,173,000
- Obligated to date \$ 6,890,000
- Unobligated to date \$ 69,600

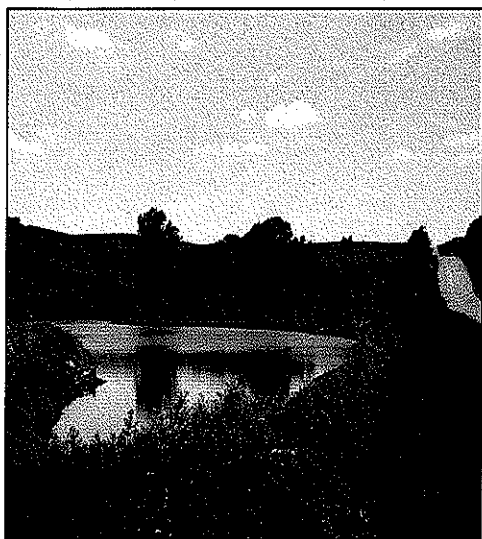
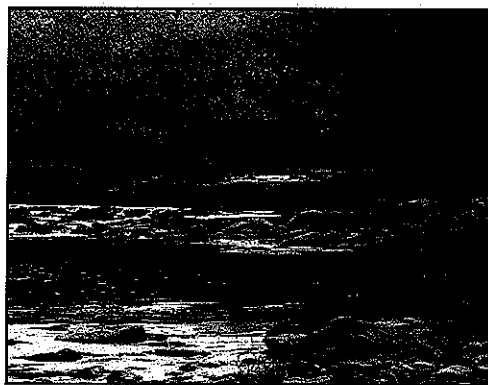
For further information, contact:

Jim Gillespie, Chief
 Field Services Bureau
 Iowa Department of Agriculture and Land Stewardship
 515-281-7043
Jim.Gillespie@idals.state.ia.us

Kenneth Tow, Director
 Division of Soil Conservation
 Iowa Department of Agriculture and Land Stewardship
 515-281-6153
Ken.Tow@idals.state.ia.us

Watershed Protection Fund (WSPF)

The Watershed Protection Fund was initiated in 2000. Watershed protection projects are established to target resources and to reduce soil erosion, protect water quality, provide flood control, and protect natural resources. Projects provide vital financial assistance for the development of watershed initiatives and water quality improvement measures.



- Currently 54 projects in 52 Soil and Water Conservation Districts (SWCDs).
- Received 180 applications for 55 different practices.
- Protected 3,692 acres, with soil loss reduction of 15,358 tons/year.
- Sediment delivery to water is 14,123 tons/year (941 dump trucks)
- Watershed Projects leveraged \$1,010,000 from other sources.

Funding:

- State funds are cost shared at 75% with 25% applicant's cost.
- FY07 Appropriation \$2,700,000
- FY08 Funding Request \$5,400,000
- Governor's Recommendation \$2,700,000
- Fund Balance July 1, 2006 \$5,460,000
- Expenditures to Date \$942,000
- Obligated to Date \$3,740,000
- Unobligated to Date \$778,000

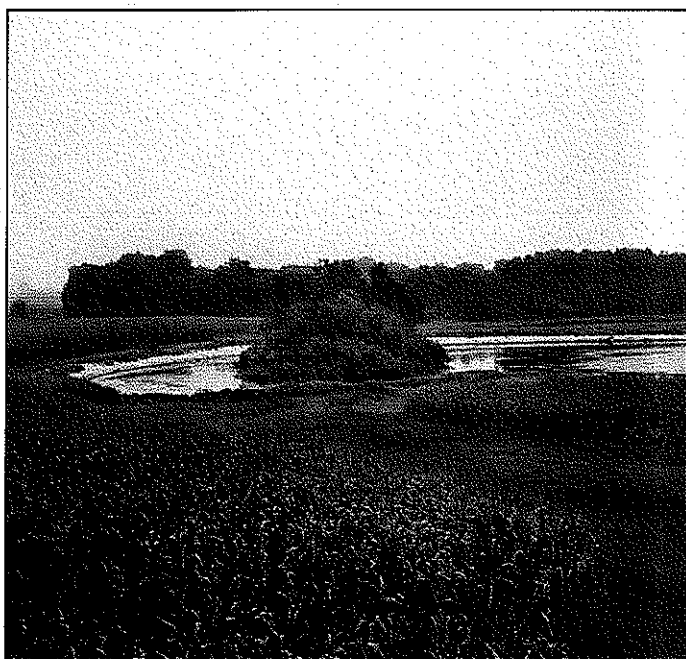
For further information, contact:

Jim Gillespie, Chief
 Field Services Bureau
 Iowa Department of Agriculture and Land Stewardship
 515-281-7043
Jim.Gillespie@idals.state.ia.us

Kenneth Tow, Director
 Division of Soil Conservation
 Iowa Department of Agriculture and Land Stewardship
 515-281-6153
Ken.Tow@idals.state.ia.us

District Initiatives Program

The District Initiatives Program—also known as the Conservation Reserve or Conservation Buffer Program—was established in 2000. Program initiatives are delivered through local Soil and Water Conservation Districts (SWCDs) to leverage dollars for federal conservation programs, increasing Iowa's overall participation in both state and federal programs. Locally-led initiatives prioritize and target sensitive areas, by providing funds and resources to protect our soil and water resources.



- Iowa leads the nation in the USDA Continuous Conservation Reserve Program (CRP) with 540,328 acres enrolled.
- Enrolled 50 acres in Iowa buffers (non-CRP).
- Planting 208.5 acres of trees on CRP to keep it in permanent cover.
- Planned 13,153 acres of grazing on CRP that have contracts that expire in 2007.
- Provided technical assistance in districts to enroll CRP and install Federal Environmental Quality Incentive Program (EQIP) practices.
- Generated \$445,513.06 of landowner investment and over \$20 million in federal funds.

Funding:

FY07 Appropriation	\$2,000,000
FY08 Funding Request	\$2,000,000
Governor's Recommendation	\$2,000,000
Fund Balance July 1, 2006	\$4,800,000
Expenditures to Date	\$ 552,000
Obligated and Requested	\$2,500,000
Unobligated to Date -	\$1,800,000

For further information, contact:

Jim Gillespie, Chief
 Field Services Bureau
 Iowa Department of Agriculture and Land Stewardship
 515-281-7043
Jim.Gillespie@idals.state.ia.us



Kenneth Tow, Director
 Division of Soil Conservation
 Iowa Department of Agriculture and Land Stewardship
 515-281-6153
Ken.Tow@idals.state.ia.us

Iowa Conservation Reserve Enhancement Program (CREP)

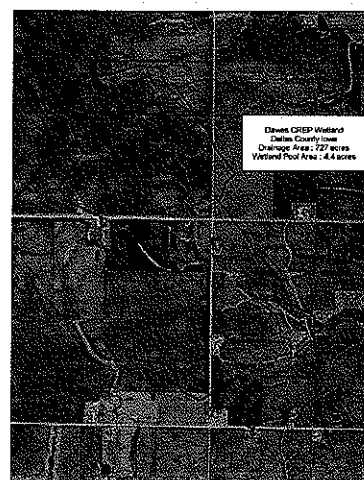
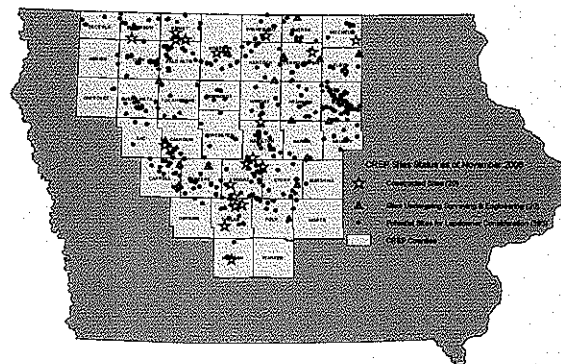
The Iowa Conservation Reserve Enhancement Program (CREP) was initiated in 2000 and is a joint effort of the Iowa Department of Agriculture and Land Stewardship and the USDA Farm Service Agency to remove nitrate to protect Iowa drinking water and reduce hypoxia in the Gulf of Mexico. It is a highly targeted water quality program focusing on the reduction of nitrate loads to surface waters through the construction of strategically located and designed wetlands that intercept tile-drainage water from upper-lying cropped lands.

- Research and monitoring by Iowa State University has shown that CREP wetlands will remove 40-90% of the nitrate in tile-drainage water.
- Wetlands constructed to date (20 sites) and those currently being designed (20 sites) are estimated to remove over 32,000 tons of nitrogen over design life. These wetlands will provide water quality protection for 51,500 acres of land.
- Over 500 potential sites exist for landowner consideration
- Average lifetime nitrogen removal costs : \$0.21/lb removed, \$1.51/acre treated

Funds:

- Federal funds are matched 4:1 with State funds
- FY07 appropriation \$1,500,000
- FY08 funding request \$1,500,000
- Fund Balance 7/1/06 \$5,774,000
- Expenditures to date \$ 976,000
- Obligations to date \$3,130,000
- Unobligated to date \$1,668,000

Iowa Conservation Reserve Enhancement Program
Nitrate Removal Wetlands



For further information, contact:

Dean Lemke, Chief
Water Resources Bureau
Iowa Department of Agriculture and Land Stewardship
515-281-3963
Dean.Lemke@idals.state.ia.us

Kenneth Tow, Director
Division of Soil Conservation
Iowa Department of Agriculture and Land Stewardship
515-281-6153
Ken.Tow@idals.state.ia.us

Agricultural Drainage Well Closure Assistance Fund

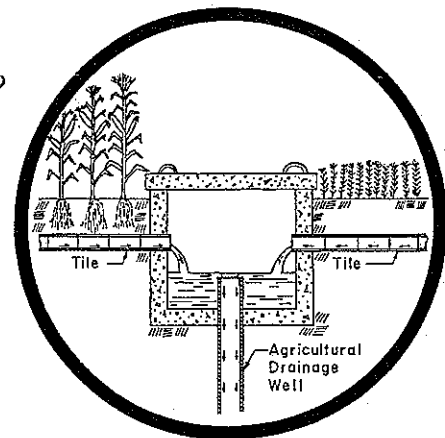
Agricultural drainage wells were developed in the early to mid 1900's and discharge cropland tile drainage water to underground aquifers. The fund was established in 1997 and protects drinking water aquifers by cost-sharing with landowners to close agricultural drainage wells and develop alternative drainage outlets to surface streams or install alternative management practices. Projects are typically constructed through drainage districts, although some projects are undertaken by individual landowners.

- 296 registered agricultural drainage wells (ADWs) in Iowa
- 60 ADWs closed without assistance fund or determined by IDNR to not be ADWs
- 102 ADWs closed to date using \$5.8 million of assistance fund
- 22 ADWs closures are currently under construction
- 112 ADWs remain in continued use, for which IDNR permits will expire in 2009



Funding Status

• FY07 appropriation	\$ 500,000
• FY08 funding request	\$2,500,000 2,500,000
• Governor's Recommendation	\$ 500,000
• Fund Balance 7/1/06	\$1,783,000
• Expenditures to date	\$ 141,000
• Obligations to date	\$ 1,533,000
• Unobligated to date	\$ 109,000



For further information, contact:

Dean Lemke, Chief
Water Resources Bureau
Iowa Department of Agriculture and Land Stewardship
515-281-3963
Dean.Lemke@idals.state.ia.us

Kenneth Tow, Director
Division of Soil Conservation
Iowa Department of Agriculture and Land Stewardship
515-281-6153
Ken.Tow@idals.state.ia.us

Integrated Farm and Livestock Management (IFLM) Iowa Learning Farm

The Integrated Farm and Livestock Management demonstration program was initiated in 2000 to demonstrate that conservation systems are effective and adaptable to farming operations. Improved residue and nutrient management results in environmental and economic benefits.

Through the IFLM demonstration program, new and emerging technologies are demonstrated on private farmland to refine management input to reduce soil losses, maximize residue cover for erosion protection and potential use for bioenergy production, enhance soil quality, and reduce nutrient and sediment loading to Iowa's rivers, lakes, and streams.

- Since 2001, more than 500 producers have been actively engaged in IFLM projects demonstrating to themselves and their communities how to efficiently and effectively:
 - utilize animal manure as a commodity rather than a waste
 - maximize their yield with reduced application of commercial fertilizers
 - reduce nutrient and sediment loading into Iowa's water bodies
- Thirty-one Iowa Learning Farm cooperators are currently demonstrating methods to improve tillage and residue management tailored to Iowa's five major soil associations.
 - Both a statewide awareness campaign and a grassroots approach are utilized for collaboration.
 - Social and economic aspects of conservation systems are also being examined.
 - An extensive education and outreach effort includes field demonstrations, field days and training, regional meetings, and a statewide conservation systems conference.

Funding:

• FY07 Appropriation	\$ 850,000
• FY08 Funding Request	\$1,600,000
• Governor's Recommendation	\$ 850,000
• Fund Balance 7/1/06	\$ 1,319,000
• Expenditures to date	\$ 400,000
• Obligated to date	\$ 405,000 **
• Unobligated to date	\$ 514,204

*(** pending execution of agreements with partner agencies)*

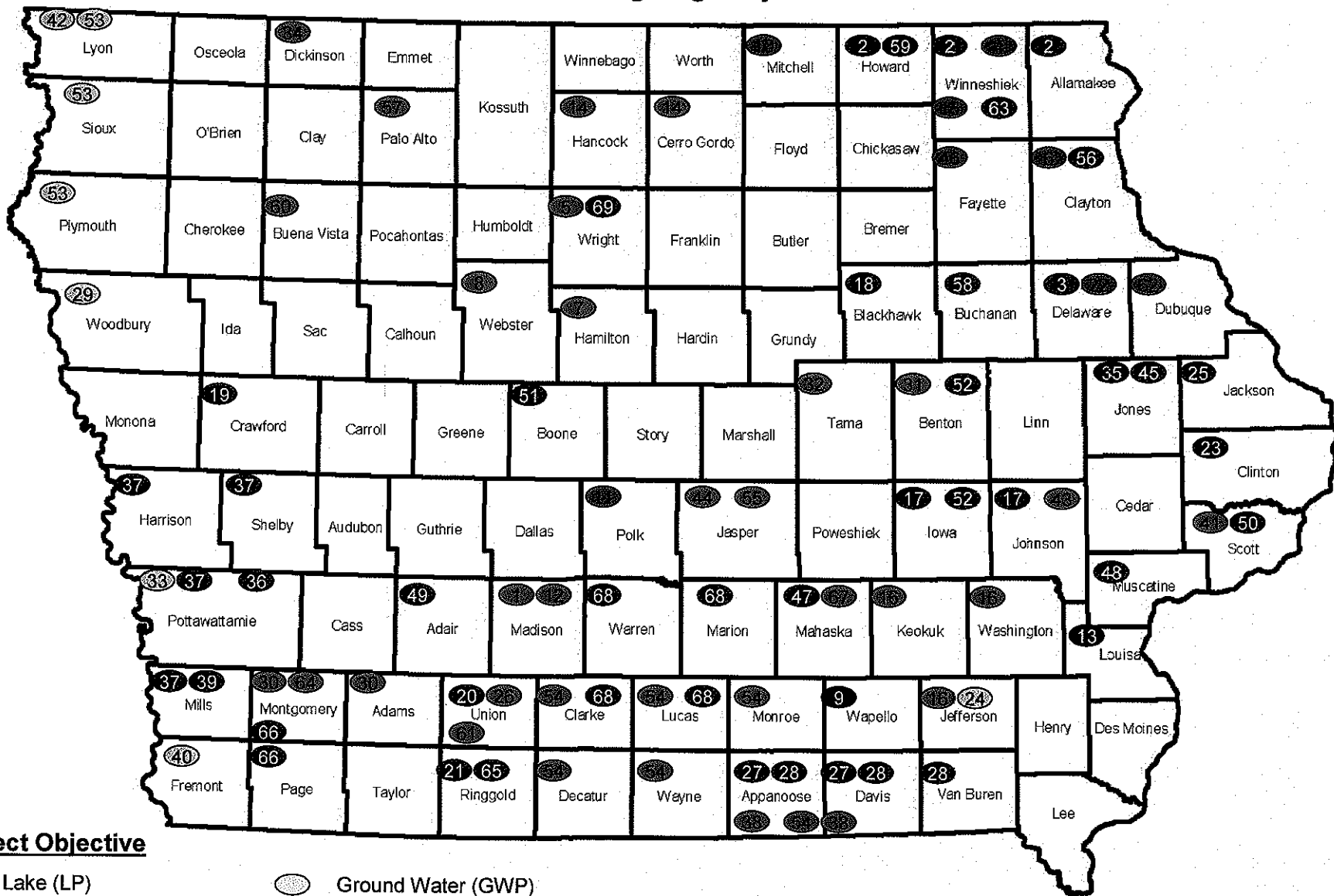


For further information, contact:

Dean Lemke, Chief
Water Resources Bureau
Iowa Department of Agriculture and Land Stewardship
515-281-3963
Dean.Lemke@idals.state.ia.us

Kenneth Tow, Director
Division of Soil Conservation
Iowa Department of Agriculture and Land Stewardship
515-281-6153
Ken.Tow@idals.state.ia.us

2007 Ongoing Projects



Project Objective

- Lake (LP)
- Urban (URB)
- Grade Stabilization Flood Control (GSFC)
- Cold Water Stream (CWSP)
- Ground Water (GWP)
- Warm Water Stream (WWSP)
- Ground & Surface Water (G&SWP)
- Multiple Objectives

Ongoing Projects

Map #	Project Name	SWCD(s)	Fund Sources	Project Objective
	Addressing Siltation and Nutrient Water Quality Problems			
1	in Badger Creek Lake Watershed	Madison	319 WPF WSPF	LP
2	Addressing WQ Impairments in the Upper Iowa River Watershed	Winneshiek, Allamakee, Howard	WSPF	WWSP
3	Bear Creek Watershed Project	Delaware	WPF WSPF	WWSP
4	Bear Creek Watershed Project	Winneshiek	319 WPF WSPF	CWSP
5	Big Wall Lake Restoration Project	Wright	319	LP
6	Bloody Run Watershed Project (Clayton)	Clayton	WPF WSPF	CWSP
7	Briggs Woods Lake Watershed Management Project	Hamilton	WPF	LP
8	Brushy Creek Lake Watershed Project	Webster	319	LP
9	Buckeye Creek Water Quality Improvement and Flood Reduction Project	Wapello	WPF WSPF	WWSP&Flood
10	Burr Oak/Turtle Creek Water Quality Project	Mitchell	WPF WSPF	CWSP
11	Camp Creek Watershed Project	Polk	319 WSPF	CWSP
12	Cedar Lake, Winterset Water Supply Project	Madison	319 WPF	LP
	Chinkapin Bluffs Water Quality Improvement and Flood Reduction Project			
13	Clear Lake Enhancement and Restoration Proj.	Louisa	WSPF	WWSP&Flood
14	Coldwater/Pine Watershed Protection Project	Hancock & Cerro Gordo	319 WPF WSPF	LP
15	Darling (Lake) Watershed Project	Winneshiek, Washington, Jefferson, Keokuk	WPF WSPF	CWSP
16	Deer Creek and North Branch Sub-sheds of Clear Creek	Johnson & Iowa	319 WPF WSPF	LP
17	Dry Run Creek Water Protection Project	Black Hawk	WPF WSPF	WWSP
18	East Boyer River Flood & Erosion Control	Crawford	319 WPF WSPF	WWSP
19	East Fork of Grand River Project (Union)	Union	WSPF	WWSP
20	East Fork of Grand River Watershed Project	Ringgold	WSPF	WWSP
21	Elk Creek Area Watershed Project	Delaware	WPF WSPF	WWSP
22	Elk River Water Quality Project	Clinton	WSPF	CWSP
23	Fairfield Regional Storm Water Management Demonstration Project	Clinton	319 WPF WSPF	WWSP
24	Farmers Creek Watershed Project	Jefferson	WPF	Flood
25	Four-Mile Creek Watershed Project	Jackson	319 WPF WSPF	WWSP
26	Fox River Impaired Waters Treatment Project	Union	WSPF	LP
27	Fox River Water Quality Project	Davis & Appanoose	319	WWSP
28	Glen Ellen Watershed Dam Rehabilitation	Van Buren, Davis & Appanoose	WPF WSPF	WWSP
29	Hacklebarney Watershed Protection Project	Woodbury	WSPF	Flood
30	Hannen Lake Watershed Project	Montgomery & Adams	WPF WSPF	LP
31	Hickory Hills Lake Watershed Project	Benton	319	LP
32	Indian Creek Site 2 Dam Rehabilitation Project	Tama	319	LP
33	Infiltration Based Storm Water Management in Iowa's Great Lakes Region Project	West Pottawattamie	WSPF	Flood
34	Jones County Urban-Rural Watersheds Project	Dickinson	319 WPF	LP
35	Jordan Creek Watershed Project	Jones	WSPF	Flood+URB
36	Keg Creek Watershed Project	East Pottawattamie	319 WPF WSPF	WWSP
37	Lake Wapello Nonpoint Source Watershed Project	Mills, West Pottawattamie, Harrison, & Shelby	WSPF	WWSP
38	Loess Hills Conservation Subdivision Project	Davis & Appanoose	319 WSPF	LP
39	Loess Hills Watershed Project(Two Rivers Watershed Project II)	Mills	WPF WSPF	URB
40	Lost Grove Lake Watershed Project	Fremont	WPF	Flood
41	Lyon County Clean Water Demo Project	Scott	319	LP
42	Macbride (Lake) Watershed Project	Lyon	319	G&SWP
43	Mariposa Lake Watershed Project	Johnson	319 WPF WSPF	LP
44	Mineral Creek Water Quality Project	Jasper	319	LP
45	Mink Creek Watershed Project	Jones	WPF WSPF	WWSP
46	Muchakinock Creek Watershed Project	Fayette	319 WPF WSPF	CWSP
47	Mud Creek Watershed Project	Mahaska	319 WPF WSPF	WWSP
48	North Thompson River Water Quality Project	Muscatine	WSPF	WWSP
49	Partners of Scott County Watersheds Project	Adair	WPF WSPF	WWSP
50		Scott	319	URB