



# IOWA STATE PARKS YOUR LEGACY

## VALUING IOWA STATE PARKS

Iowa's state parks are more than trees and grass. They are facilities and natural resources that need active management, maintenance and upkeep to keep them functioning. The following tally is the physical assets that make up Iowa's state park system.

## CAPITAL ASSETS 71 PARKS & RECREATION AREAS | 56,193 ACRES

77 campgrounds	1 golf course, 18 holes	124 boat ramps
271 full hook-up campsites	10 concession operations	80 shower restroom buildings
2,528 electrical campsites	29 day-use lodges	93 modern restroom buildings
628 non-electrical campsites	145 picnic shelters	280 pit toilets
485 equestrian campsites	247 picnic areas	65 miles of electric lines
38 year-round cabins	352 miles of hiking trails	32 sewage lagoons
47 seasonal cabins	123 miles of equestrian trails	64 septic fields
3 organized group facilities	148 miles of mountain bike trails	91 miles of sewer lines
1 year-round resort lodge, 105 rooms	238 miles of snowmobile trails	53 drinking water wells
28 year-round cottages	58 miles of paved bicycle trails	150 miles of water lines
1 indoor waterpark	40 beaches	752 paved gravel parking lots

## VISITS & OVERNIGHTS 17,180,705 VISITATIONS | 780,991 GUEST DAY/NIGHT VISITS OVERNIGHT: 721,244 CAMPING RENTAL DAYS | 42,678 CABIN RENTAL DAYS | 17,069 GROUP RENTAL DAYS

43 STATE PARKS  
BENEFITTED FROM ANNUAL  
**ANNUAL \$5 MILLION**  
RIIF APPROPRIATION

AA Call  
Backbone  
Beed's Lake  
Bellevue  
Big Creek  
Brushy Creek  
Cedar Rock  
Clear Lake  
Dolliver  
Elk Rock  
Emerson Bay  
Geode  
George Wyth

Green Valley  
Honey Creek Resort  
Lacey Keosauqua  
Lake Ahquabi  
Lake Anita  
Lake Anita  
Lake Darling  
Lake Keomah  
Lake Macbride  
Lake of Three Fires  
Lake Wapello  
Ledges  
Lewis & Clark  
McIntosh Woods

Mines of Spain  
MiniWakan  
Pikes Peak  
Pilot Knob  
Pine Lake  
Pleasant Creek  
Prairie Rose  
Rice Lake  
Rock Creek  
Springbrook  
Union Grove  
Viking Lake  
Walnut Woods  
Wapsipinicon  
Waubonsie  
Wilson Island



# PARTNERING FOR SUCCESS

**PINE LAKE** - The Iowa Parks Foundation, with strong local support from Pine Lake Friends Group, helped Pine Lake after a storm destroyed thousands of trees. Together, they raised \$75,000 to purchase and plant 120 6- to 8-foot trees and cover the cost of caring for 7,000 saplings purchased through an Arbor Day grant.



**LAKE DARLING** - The Lake Darling Friends Group, eager to upgrade facilities to attract more visitors, created a plan for a 4,000 square foot, all-season lodge with outdoor patio and parking lot, plus a beach restroom and shower; an open picnic shelter, playground equipment, and a 2,100-foot-long, 8-foot-wide wheelchair accessible concrete fishing trail and pier.

The project was funded by the legislature, the DNR, the Washington County Riverboat Foundation, former Richland resident Jerry Robinson and a series of pancake breakfasts, a benefit auction, walk/run event and personal donations.



**HONEY CREEK RESORT** - A Greener Way to Stay. Guests can participate in green practices and learn more about Honey Creek's environmental ethic through kiosks and naturalist programs.

Guests may recycle, reuse linens and use eco-friendly bath amenities. Green practices extend to the landscape, including prairie restoration, rain barrels and bioretention basins. The activities building was designed to create more energy than it uses.

Honey Creek Resort is the only Iowa hotel to receive LEED certification.



**EB LYONS AT MINES OF SPAIN** - The Friends of Mines of Spain and park staff wanted to renovate and expand the EB Lyons Interpretive Center's existing 6,300 square feet to 13,700 square feet for classes and exhibits, auditorium, library and biology lab.

The board hired grant writers to help raise money for the \$1.8 million project.

It took five years to secure money and one year to construct. Funding sources include the legislature, the DNR, city of Dubuque, Dubuque County, Mystique/Dubuque Racing Association and personal donations.

Board members spent 5,000 volunteer hours on this project. Friends of Mines of Spain received an award at the 2011 National Association for Interpretation Conference in Minneapolis for the work they have done.



# Investing in Iowa State Park Legacy





# State Parks by the Numbers

- 40 beaches
- 77 campgrounds – 5,000+ camp sites, 80 shower bldgs.
- 100 modern restrooms
- 280 non-modern restrooms
- 86 cabins
- 26 day-use lodges
- 5 interpretive centers
- 150 picnic shelters
- 124 boat ramps
- 178 fishing jetties
- 450+ miles of trails
- 91 miles sewer lines
- 32 sewage lagoons
- 53 public drinking wells
- 150 miles water lines





# State Park Visitors

- Annual state park visitation – 17,180,705
- \$786,000,000 annual combined expenditures by state park day-use and overnight visitors - according to the study – “Value of Outdoor Recreation Activities in Iowa” ( 2012 ISU Center for Agriculture & Rural Development )

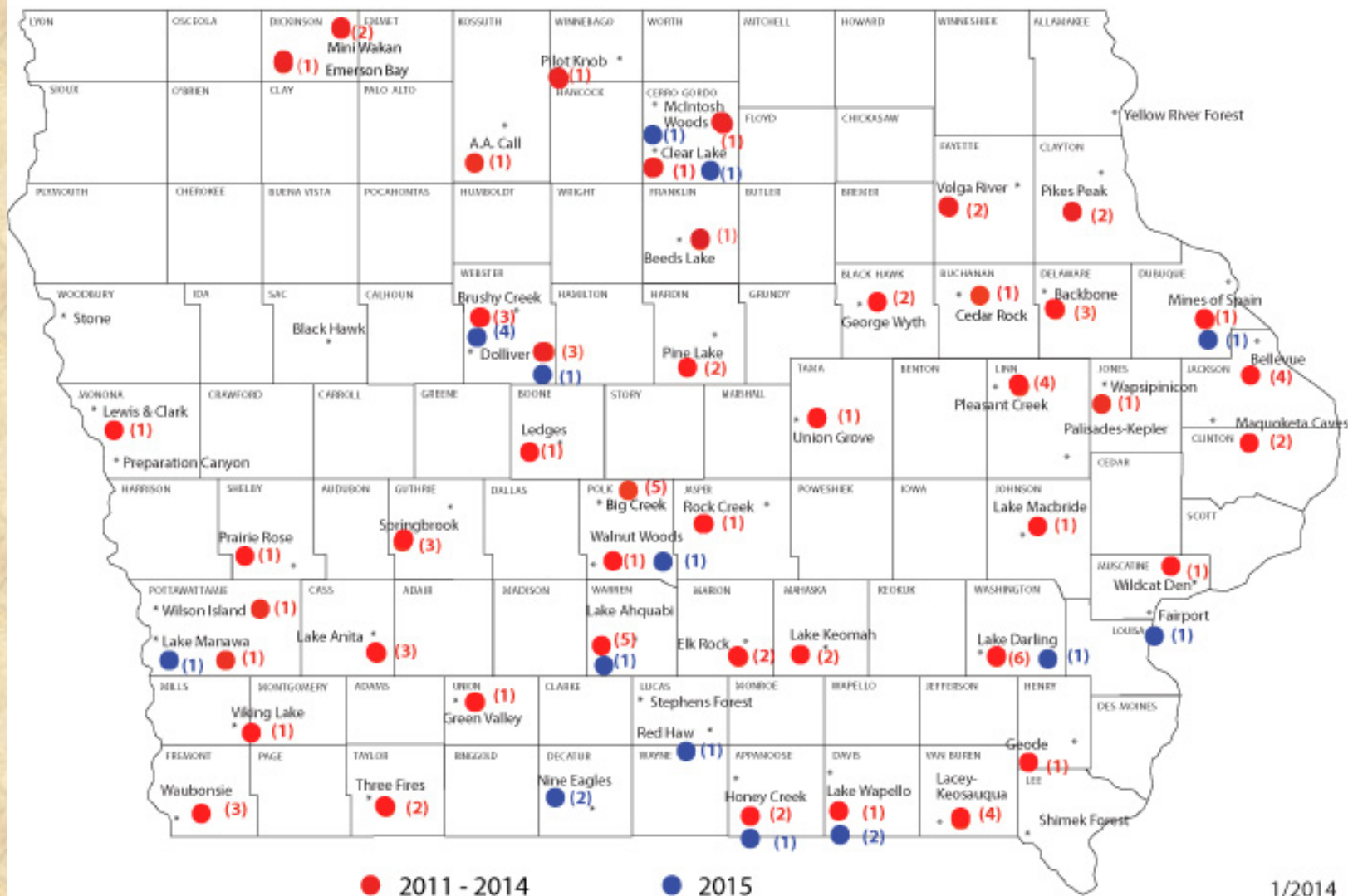




## 5 Years - 43 State Parks Affected in 40 Counties

2011 - 2015 \$5 Million Annual Appropriation Investment

## Iowa State Parks





# Restoring a Legacy of the Past

FY 2011 – 2014 \$2,100,000



Connecting current state park visitors  
with the CCC legacy – the work &  
sacrifice in our nation's history that  
created park architecture



**FY 2011 – 2014**

**Lodges & shelters - \$1,071,000**

**Year-round family cabins - \$9,120,000**



**Creating Memories &  
Family Traditions**





# Plan for the Future

- Self initiated environmental audit
- Assessment of infrastructure backlog needs
- Design Guide development for architectural roadmap to future

**State Park Design Guide builds on the best of the past with the best of the future**

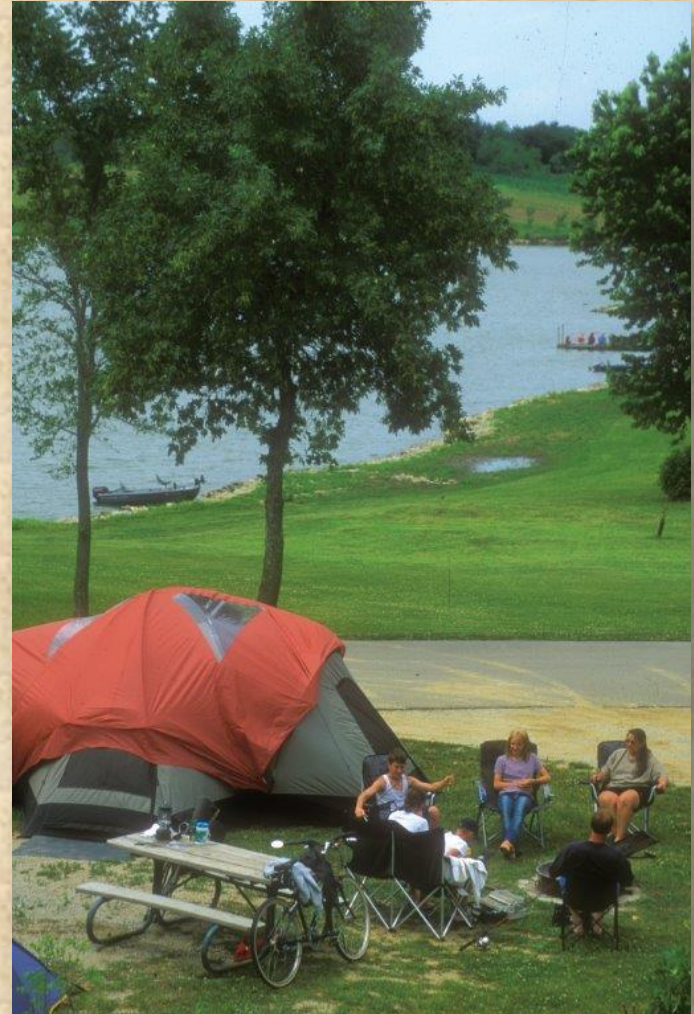




# **Protecting Natural Resources, Health, & Safety of Park Visitors by Upgrading (FY 2011 – 2014):**

- **Campground electrical & surfaced sites – \$2,424,388 (225 campsites – 5 parks)**
- **Sewage treatment system issues – \$337,904 (8 parks) plus \$2 million in SRF**
- **Public drinking water – replace 3.4 miles of water line (much of water line funded in FY 2010 - \$350,000) plus 2 new well/water treatment systems**

**Lake Darling**





- **Replace 12 shower buildings (1956 – 1969) - \$3,073,614**
- **Replace/construct 9 restrooms - \$420,337**



**Utilizing prefabricated buildings**





# Connecting the Youngest Visitors with Nature

**Walnut Woods Friends Group**



**Elinor Bedell**

**State Park Friends Groups – Playscapes  
combination of climbing/play  
equipment & rock and tall grass “tunnels”**





# State Park Entrance Portals

**Historic  
Stone Before  
Restoration**



**Stone After Restoration**



**New Design Guide Portal**



## CONCEPT PLAN



**Nine mini shelters**



**Big Creek Beach Redevelopment  
(\$1,900,000) new shelters,  
restrooms, & walkways**

**Three large design guide shelters**



# Nature Education Exploration, Appreciation and Understanding



- Seasonal naturalists
- Open-air interpretive kiosks – available 24/7
- Park orientation - Interpretive panels at trailheads/points of interest
- New technology

Addition to EB Lyons Nature Center







# Connecting Park Friends

**Friends of Mines of  
Spain - E B Lyons  
Nature Center  
Addition**



**Friends of MiniWakan - Lodge Restoration Dedication**



# Trails – Connecting People, Parks & Communities

**FY 2011 – 2014 (\$1,014,000)**

- Connect Green Valley to Creston (RIFF share)
- Complete Lake Anita trail connected to Anita

**FY 2015 – 2020**

- Connect Lake Darling to Brighton



**Creston to Green Valley**



**Springbrook**

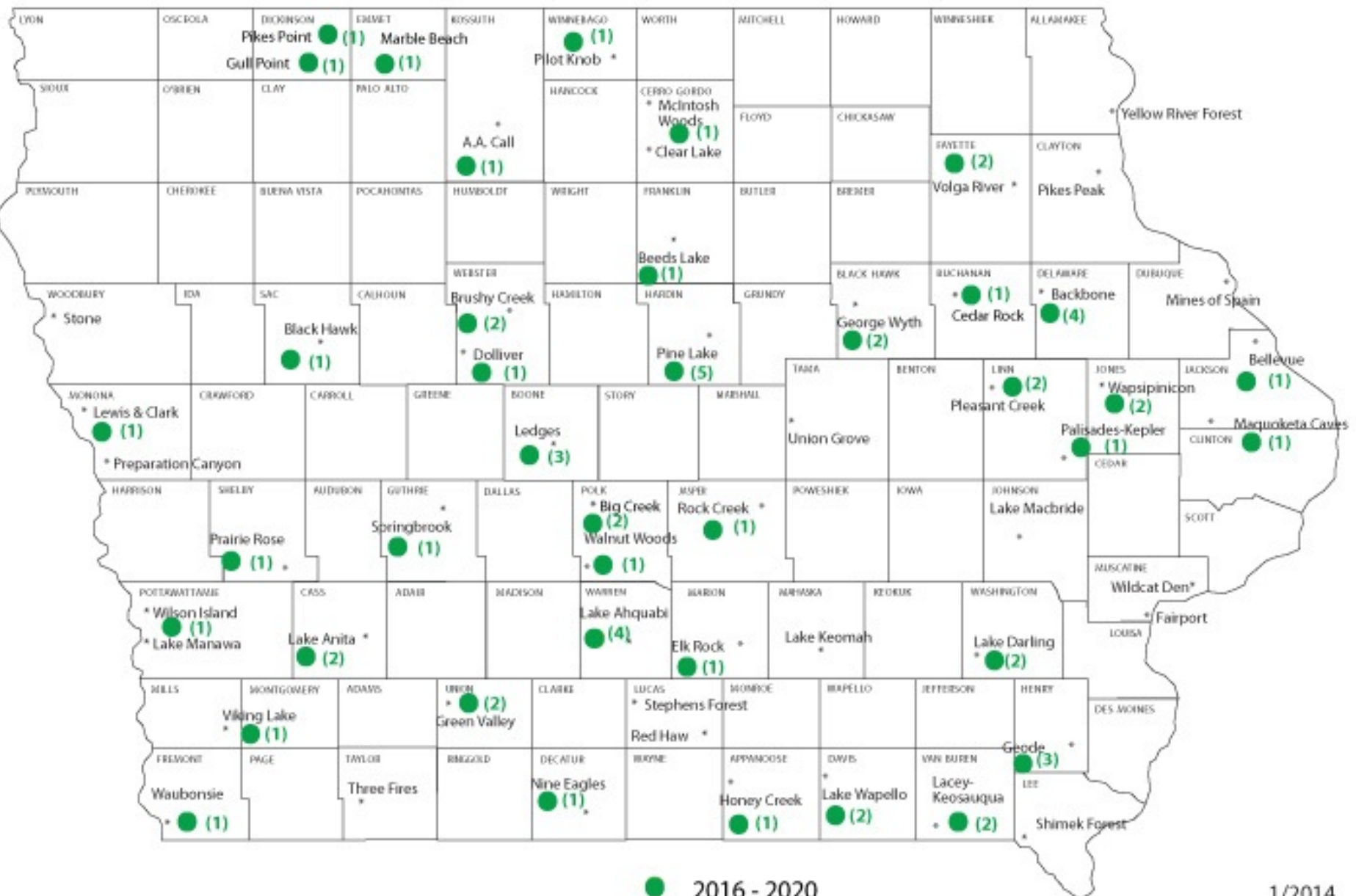


**Lake Anita**



# 2016 - 2020 \$5 Million Annual Appropriation Investment

## Iowa State Parks



● 2016 - 2020



# State Park Infrastructure Restoration & Improvements

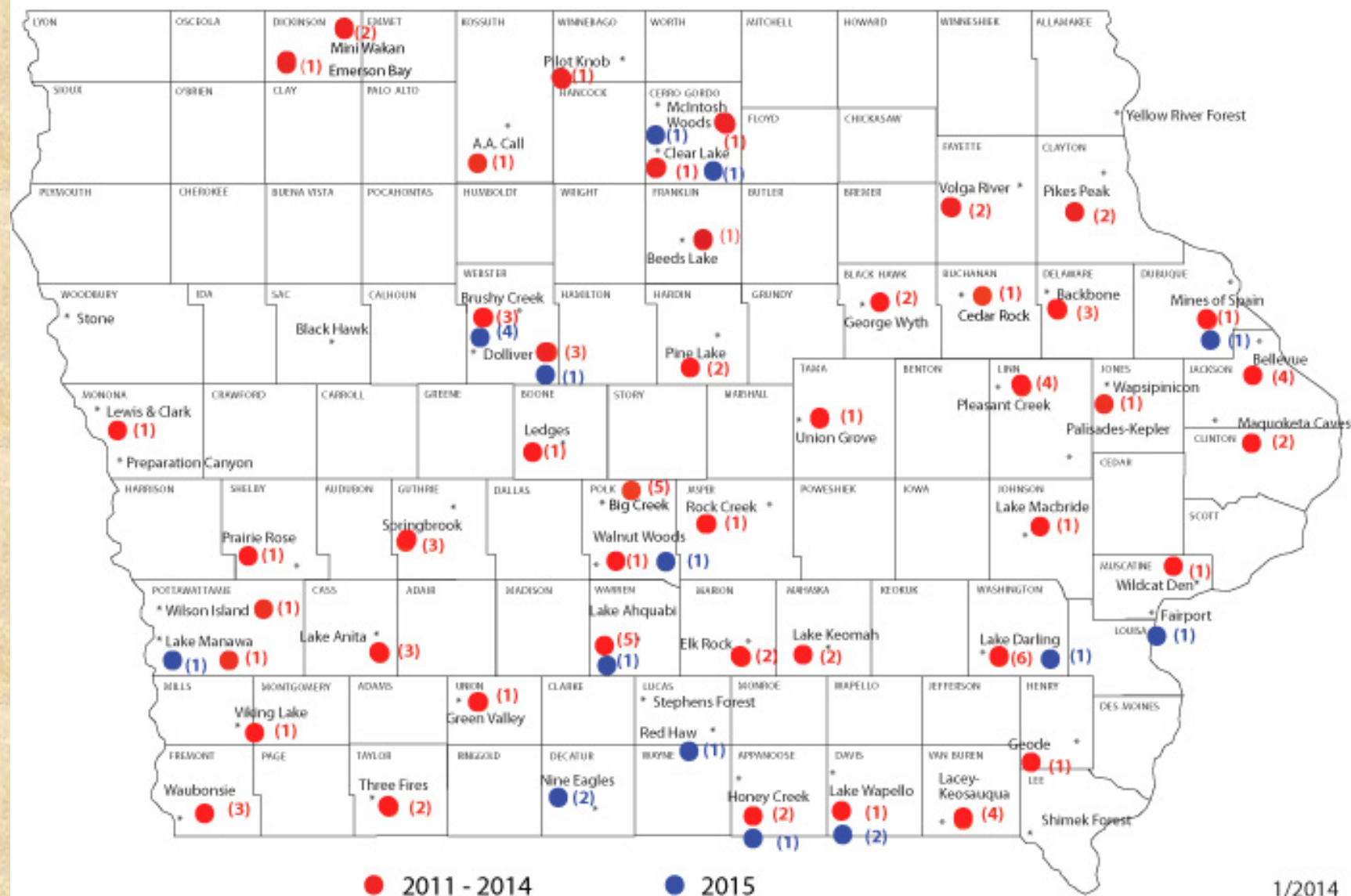
- Protects the environment, enhances the quality of life – family outdoor time, promotes physical & mental health
- Provides stimulus to the economy – consultants, jobs & businesses





# 2011 - 2015 \$5 Million Annual Appropriation Investment

## Iowa State Parks





## Main Topics

- Restoration efforts follow established program guidelines
- Past progress - cooperative efforts are improving Iowa lakes
- FY15 budget and ten year plan



# Lake Restoration Program

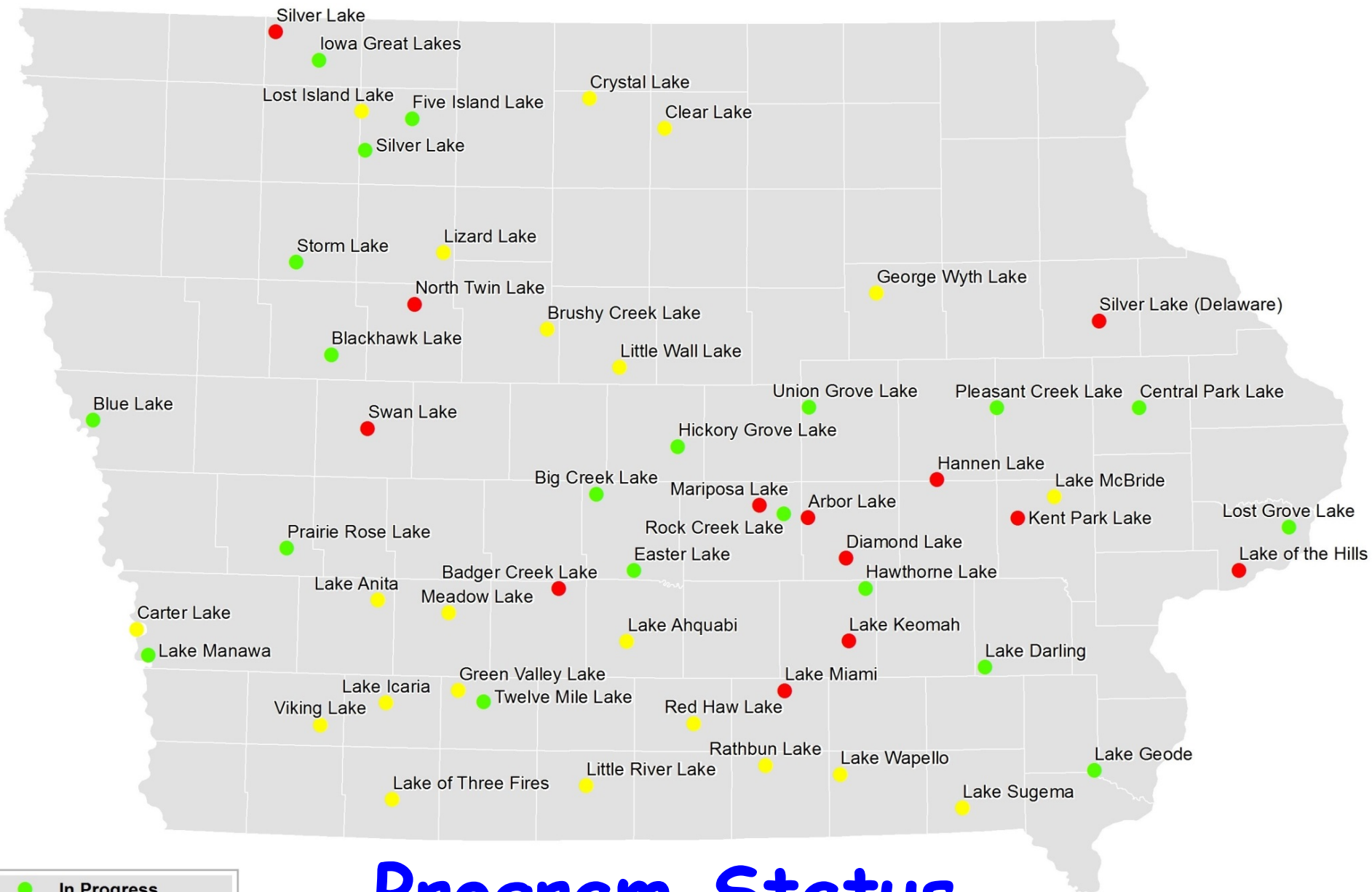


# Restoration Focused on Iowa's Significant, Publicly-owned lakes

- Multi-use, recreational resources
- Prioritized based on water quality, public benefit, and restoration potential







# Program Status

- In Progress
- Maintenance
- Planning/Evaluation



# Program Goals



- Cost effective, positive return for Iowa
- Significant improvement to water clarity, safety and quality of Iowa lakes
- Increase usage and improve quality of life



- Lake use increased 27% from 2005 to 2009
- Three of the four lakes with highest increase in visitation underwent restoration - Clear L., L. Macbride and Storm L.
- Lakefront property values increased 62% over the past 10 years
- Lakes that complete watershed/lake improvement exceed state visitation averages and their own pre-renovation visitation levels



*Lake Macbride in Johnson County.*



# Green Valley Lake (Union)

**Ice fishing use at Green Valley Lake is 20 times higher than historic levels**



**Campground usage is up almost 25 percent since lake restoration and park improvements**



# Most Popular Activities at Iowa Lakes

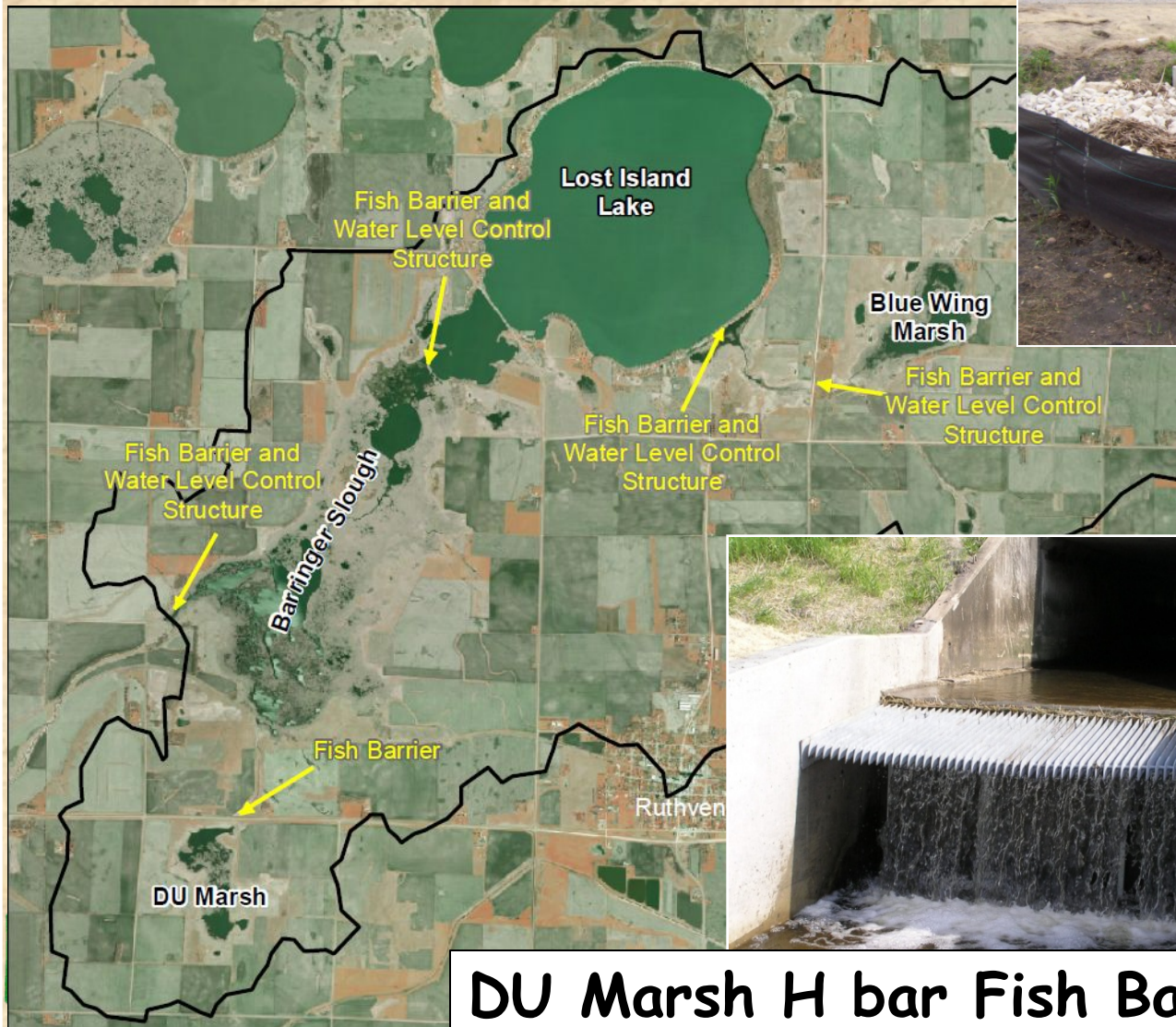


Fishing Green Valley Lake near the park campground.



# Major projects funded with recent appropriations

## Lost Island Lake (Palo Alto)



**Blue Wing Marsh Control Structure**



**DU Marsh H bar Fish Barrier**

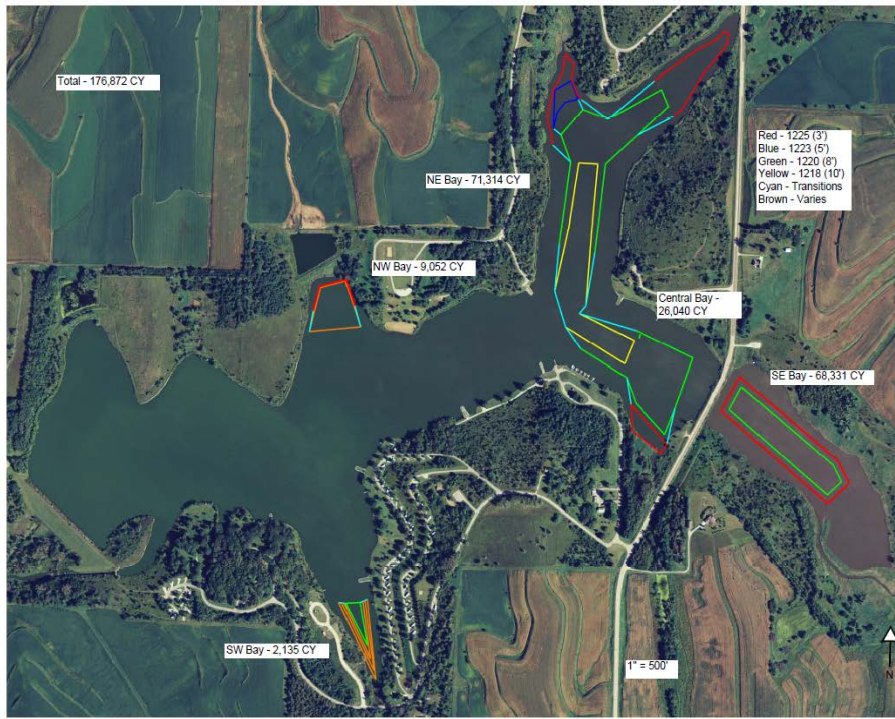


# Improving our State Parks - Lake Darling (Washington) and Prairie Rose (Shelby)

- Two more multi-year projects coming to a close
- Successful watershed protection, campground improvement and lake restoration



Community led effort for  
lodge at Lake Darling



Prairie Rose hydraulic  
dredging locations  
planned for 2014



# Ten-year Plan (FY14 – FY23)

- Program focused on an active list of 35 significant-publically owned lakes prioritized for restoration funding
- Long-term comprehensive approach to restoration: maintain partnerships with communities from assessment/planning to implementation
- At current \$8.6 million annual funding level 28 projects completed and seven projects initiated FY14-FY23





# Proposed FY15 Budget

Project Name	County		Description
Hannen Lake	Benton	\$200,000	Watershed Assessment / Improvement
Storm Lake	Buena Vista	\$850,000	Dredging / Cover Crops
IA Great Lakes	Dickinson	\$400,000	Okoboji West / Marble-Hottes / Center L.
Lake Geode	Henry	\$100,000	Watershed Improvement
Mariposa Lake	Jasper	\$200,000	In-lake Restoration
Kent Park L.	Johnson	\$150,000	Watershed Assessment / Improvement
Central Park L.	Jones	\$300,000	Wetland Structures / Dredging
Pleasant Creek L.	Linn	\$600,000	Shoreline Stabilization/ Watershed Evaluation
Badger Creek L.	Madison	\$250,000	Sediment Control Structures
Lake Keomah	Mahaska	\$100,000	Watershed Improvement
Blue Lake	Monona	\$800,000	Fish Barrier Structures
Five Island L.	Palo Alto	\$150,000	Dredging / Watershed Improvement
Silver Lake	Palo Alto	\$100,000	Diagnostic Study / Fish Barrier
Easter Lake	Polk	\$500,000	Engineering / Yeader Creek / Urban Practices
Lake Manawa	Pottawattamie	\$1,500,000	Dredging / Shoreline Improvement
Black Hawk L.	Sac	\$300,000	Watershed Improvement / Containment Site
L. of the Hills	Scott	\$150,000	Watershed Assessment / Design
Hickory Grove L.	Story	\$400,000	Watershed Improvement / Lake Protection
Union Grove L.	Tama	\$600,000	Dredging / Spillway / In-lake Restoration
Minors		\$450,000	Lake Assessment / Shallow Lakes
Engineer/Design		\$500,000	
<b>Total</b>		<b>\$8,600,000</b>	



# Major projects over the next five years

Project Name	County
Storm Lake	Buena Vista
IA Great Lakes	Dickinson
Lake Geode	Henry
Central Park L.	Jones
Pleasant Creek Lake	Linn
Lake Keomah	Mahaska
Blue Lake	Monona
Easter Lake	Polk
Lake Manawa	Pottawattamie
Black Hawk Lake	Sac
Hickory Grove Lake	Story
Union Grove Lake	Tama



**For more information...**

**[www.iowadnr.gov/water/lakerestoration/](http://www.iowadnr.gov/water/lakerestoration/)**



**Mike McGhee      515-281-6281**  
**[mike.mcghee@dnr.iowa.gov](mailto:mike.mcghee@dnr.iowa.gov)**

**George Antoniou      515-281-8042**  
**[george.antoniou@dnr.iowa.gov](mailto:george.antoniou@dnr.iowa.gov)**





