

The



Problem

BRUSH CREEK, FAYETTE COUNTY IOWA

EWP Easement
Area (52.3 acres)

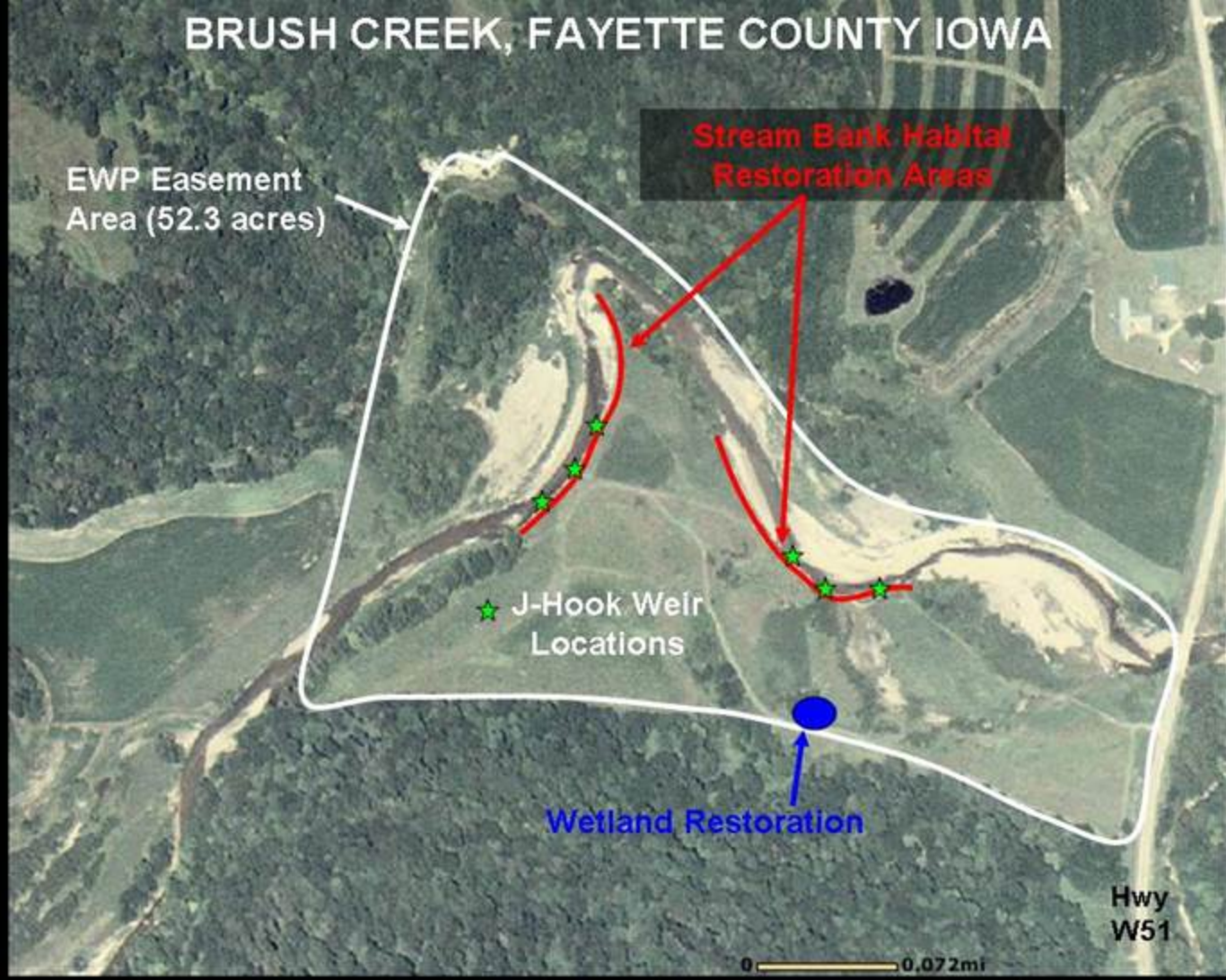
Stream Bank
Habitat
Restoration
Areas

★ J-Hook Weir
Locations

Wetland Restoration

Hwy
W51

0 0.072mi





**Brush Cr - Eric Boehm Property
2011 Aerial Photograph**

—— 1990's Stream Location

Brush Creek Site 1



Brush Creek Site 2



Before



After

**Brush Creek
Site 3**



Before



After

Brush Creek Site 4



Before



After

**Brush Creek
Site 5**



Before



After