

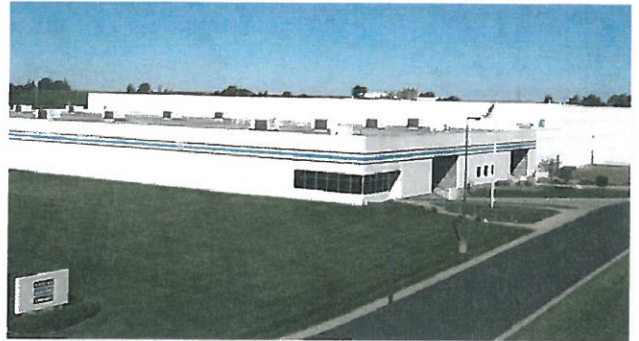
Bodine: History in Motion

Over a century ago, two Swedish immigrant brothers, Carl and Paul Bodine, recognized that industrial machinery required stronger, more reliable motors than those currently on the market. In 1905 they rented a small loft in Chicago for their company headquarters and concentrated on developing durable small motors.

A Century of Innovative Design

As the demand for electrical equipment skyrocketed during the early 1900s, so did the need for small motors. By 1917 the Bodine Electric Company had grown from three employees to seventeen. However, even during this early period Bodine focused on applications that required specialized engineering such as office machinery and medical equipment.

In 1927 Bodine became the first small motor company to offer a motor-gearhead combination. With the introduction of their type "C" motor-reducer, Bodine established itself as a major producer of fractional horsepower gearmotors.

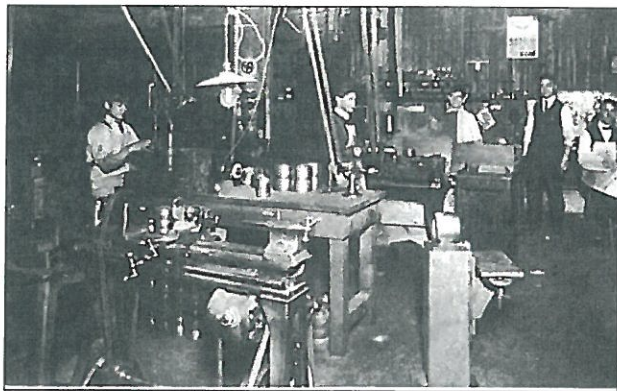


Following the use of low-inertia Bodine motors in military aircraft in the 1940s, the company introduced a line of "servo control" motors. In the late 1960s Bodine introduced controls, making them one of the first complete motion-control providers. The company continued to expand its product line during the 1970s, '80s and '90s, adding brushless DC, AC inverter duty products, as well as the new e-TORQ brushless DC servo motors.

Engineering Expertise

Engineering and application expertise remain the top priority at Bodine. Bodine maintains one of the largest teams of engineers and technical support personnel of any US small motor company. Over 60% of the products Bodine sells are customized.

From the first motor in 1905, Bodine Electric Company now offers over thousands of standard and custom gearmotors, motors and controls. Still known for their reliability, long life and competitive prices, Bodine products are found in many demanding applications. Bodine is headquartered in Chicago, Illinois with manufacturing and assembly operations in Peosta, Iowa.



A TIME LINE OF BODINE APPLICATIONS AND PRODUCTS

