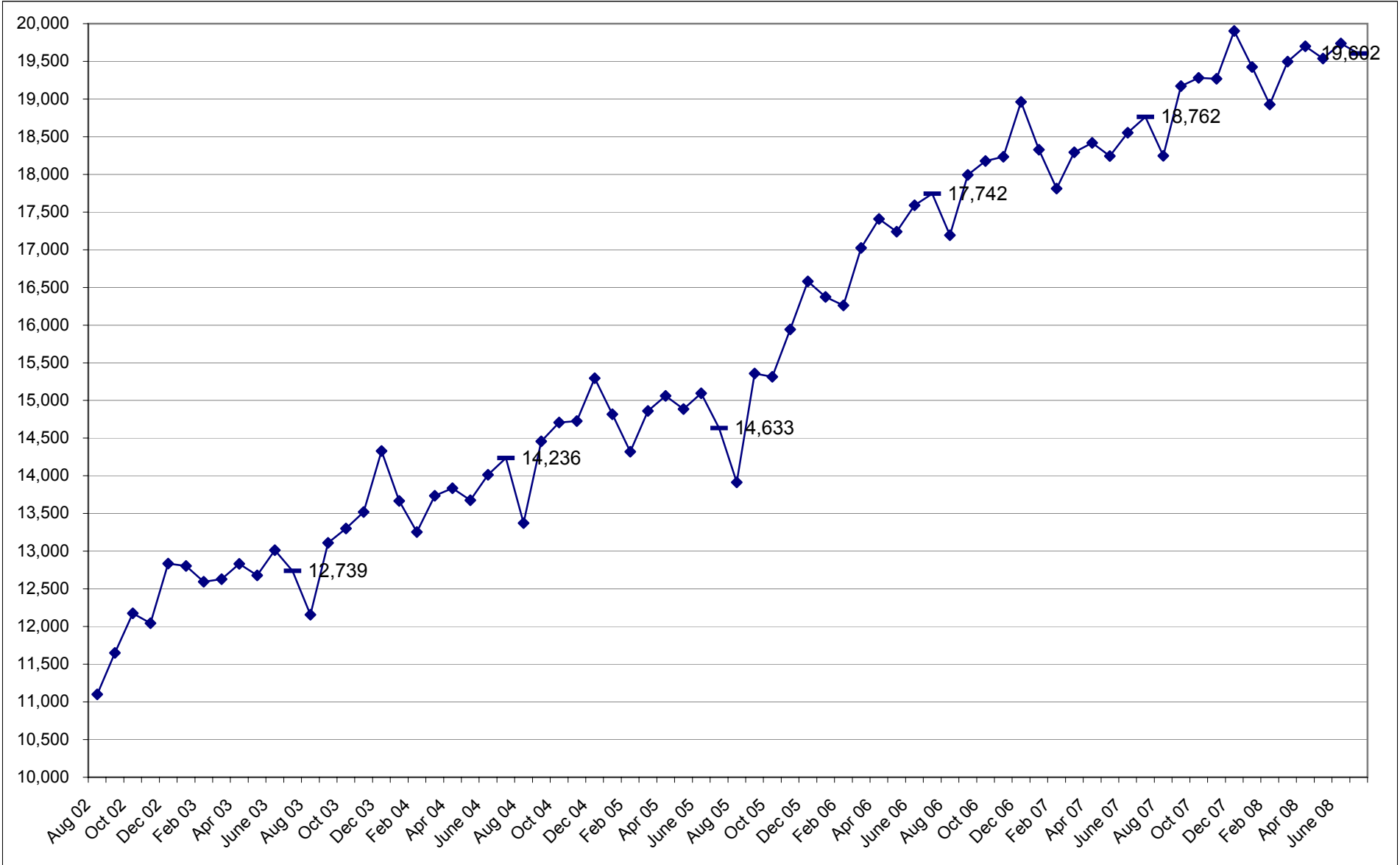


Child Care Assistance Subsidized Cases Paid/Costs  
 SFY03 - 05 Actuals  
 SFY06 - 08 Projected



	SFY03	SFY04	SFY05	SFY06	SFY07	SFY08
monthly average cases paid per month	12,425	13,570	14,686	16,485	18,295	19,217
monthly average cost per case	\$291.46	\$287.33	\$295.46	\$332.02	\$338.72	\$336.39
annual cost of subsidized child care	\$43,458,036	\$46,790,351	\$52,070,119	\$65,680,465	\$74,363,940	\$77,574,240

Each number identified within the chart above represents cases paid at the end of each fiscal year.

### Child Care Assistance Summary of Resources and Expenses

