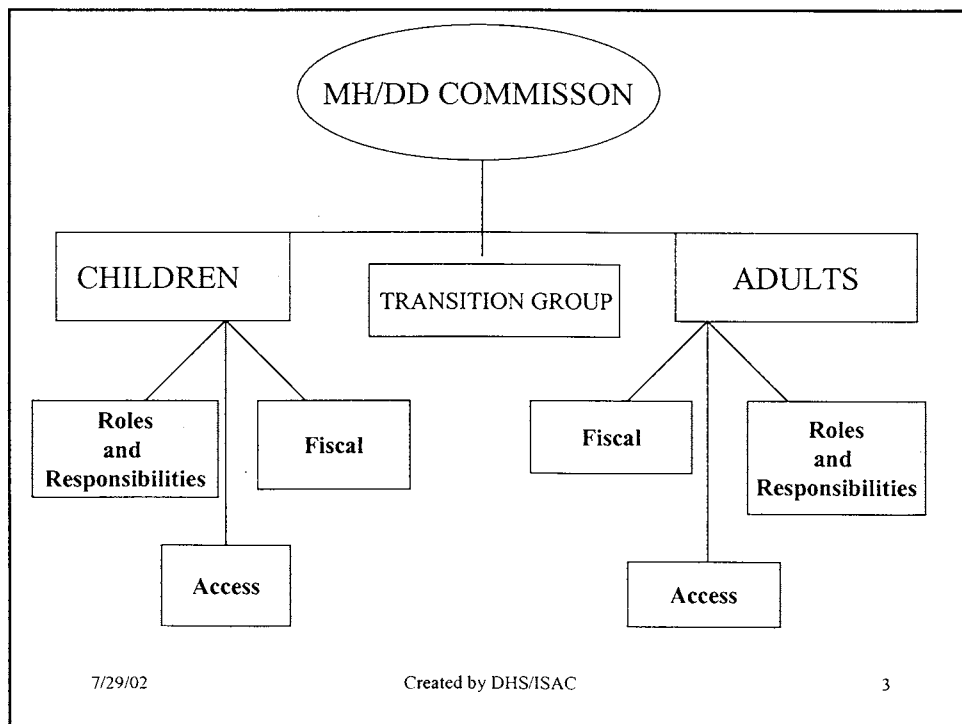
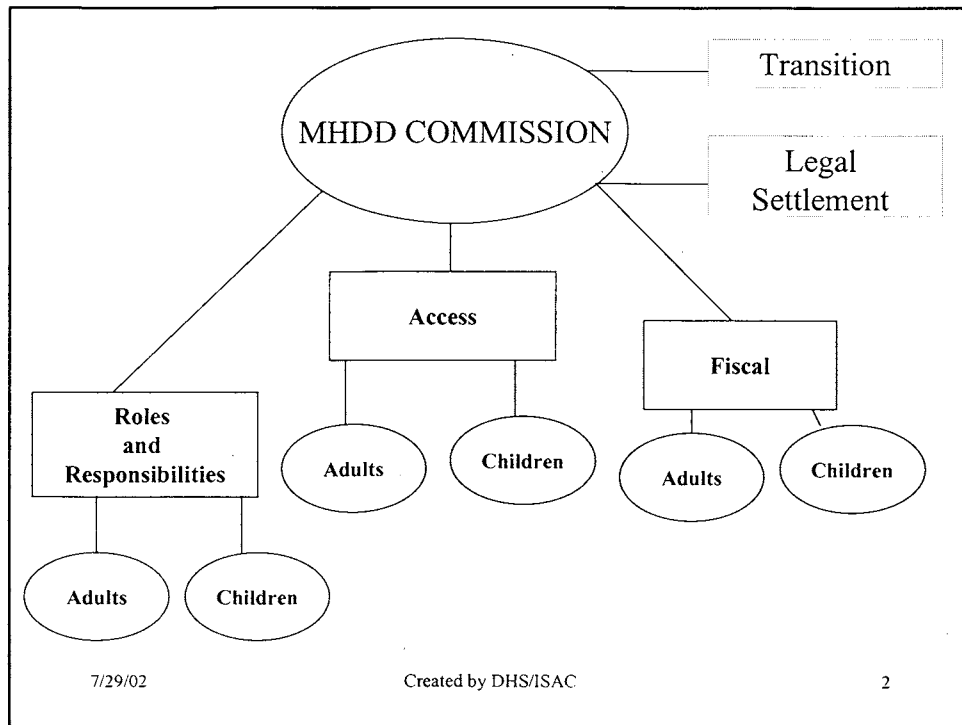


VISION STATEMENT

**Develop and empower
a meaningful mental health authority
for the state of Iowa,
with both responsibility and authority
to establish and implement
a coordinated system of care for
children and adults
with mental illness, brain injury and
developmental disabilities.**

(letter to the Governor of Iowa 1/08/2002)



MHDD Commission

Accreditation
Amendments/Plans
Other duties

Legal Settlement

MHDD REDESIGN

Roles and Responsibilities
Four Commission Members
(sub-commission group)

Adult:
1 State
1 County
1 Provider
1 consumer/
family
member
(Core
Work
Group)

Children:
1 State
1 County
1 Provider
1 consumer/
family
member
(Core
Work
Group)

Workgroup

Workgroup

Access
Four Commission Members
(sub-commission group)

Adult:
1 State
1 County
1 Provider
1 consumer/
family
member
(Core
Work
Group)

Children:
1 State
1 County
1 Provider
1 consumer/
family
member
(Core
Work
Group)

Workgroup

Workgroup

Fiscal
Four Commission Members
(sub-commission group)

Adult:
1 State
1 County
1 Provider
1 consumer/
family
member
(Core
Work
Group)

Children:
1 State
1 County
1 Provider
1 consumer/
family
member
(Core
Work
Group)

Workgroup

Workgroup

Support Design
Four Commission Members
(sub-commission group)

Adult:
1 State
1 County
1 Provider
1 consumer/
family
member
(Core
Work
Group)

Children:
1 State
1 County
1 Provider
1 consumer/
family
member
(Core
Work
Group)

Workgroup

Workgroup

Sub-Commission Groups Duties and Responsibilities

- Meeting at least once a month (part of the commission meeting).
- Provide direction to the workgroup.
- The core work group and the sub commission will come up with the report and action steps to be presented to the whole commission.

Core Workgroup Duties and Responsibilities

- Meeting in Des Moines twice a month.
 - Once with the workgroup
 - Once with the Commission
- Core work group will bring the report to the sub commission group.
- Co-chairs of the core work group will be the state person and the county person. (There may be expense for copies, etc. so we are passing that to the state and counties.)

Workgroup Duties and Responsibilities

- Meeting at least once a month for work group.
- The work group does research, brainstorming and recommendations.

Rules:

- Nothing is sacred. This system will be developed for the people who will need to use it; NOT the funders, providers or other interested parties.
- Leave your bag of rocks in the box by the door.
- If you miss three committee meetings you may be replaced by the core workgroup or the commission.

Questions for Roles and Responsibilities Workgroup

- *What is the role of the State Mental Health Authority? (Commission Question)
- *Who manages the kids disability system?
- *What do we mean by the children's disability system? (support design)
- *Where does substance abuse fit? (support/eligibility)
- *Where does corrections and juvenile justice fit?
- *What is the role of institutions?
- *What is a practical sized administrative unit?
- *What is the role of administrative contract?
- *What is the role of the CPC?
- *What is the role of the Iowa Plan? (Magellan)
- *What is the role of the disability system in the commitment process?
- *What will the necessary code changes that will need to be made?
- *What should the child to adult transition process 'look' like?
- * *Relationship w/ Empowerment.*

Questions for the Access Workgroup:

- *Should there be standard statewide eligibility? (Clinical and financial)
- *What disabilities are included in Iowa's disability system?
- *What is the systems responsibility to assure statewide availability of services and supports?
- *What are the gaps in the system?
- *Are we reaching all the people who have needs?
- *Education and outreach...how to make people knowledgeable about this system?
- *What will the necessary code changes that will need to be made?
- *What should the child to adult transition process 'look' like?

Questions for the Support design workgroup (the big forest folks/Olmstead):

- Role of residential facilities.
- Person centered versus core services philosophy.
- Role of institutions and resource centers.
- Role of foster care, shelter care, juvenile detention, out of home placements.
- How do other states do this?
- What are the other models?
- What will the necessary code changes that will need to be made?
- What should the child to adult transition process 'look' like?

Questions for the Fiscal workgroup:

- How should the system be funded?
- Funding formulas.
- State cases.
- Other federal funding options.
- What will the necessary code changes that will need to be made?
- What should the child to adult transition process 'look' like?

Questions for the Legal Settlement:

- Should we keep it?
- What happens if it goes away?
- What happens to population centers, border counties, areas with large institutions?
- What will the necessary code changes that will need to be made?