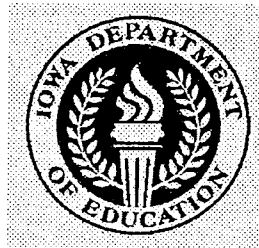


# The IOWA EDUCATION PARTNERS



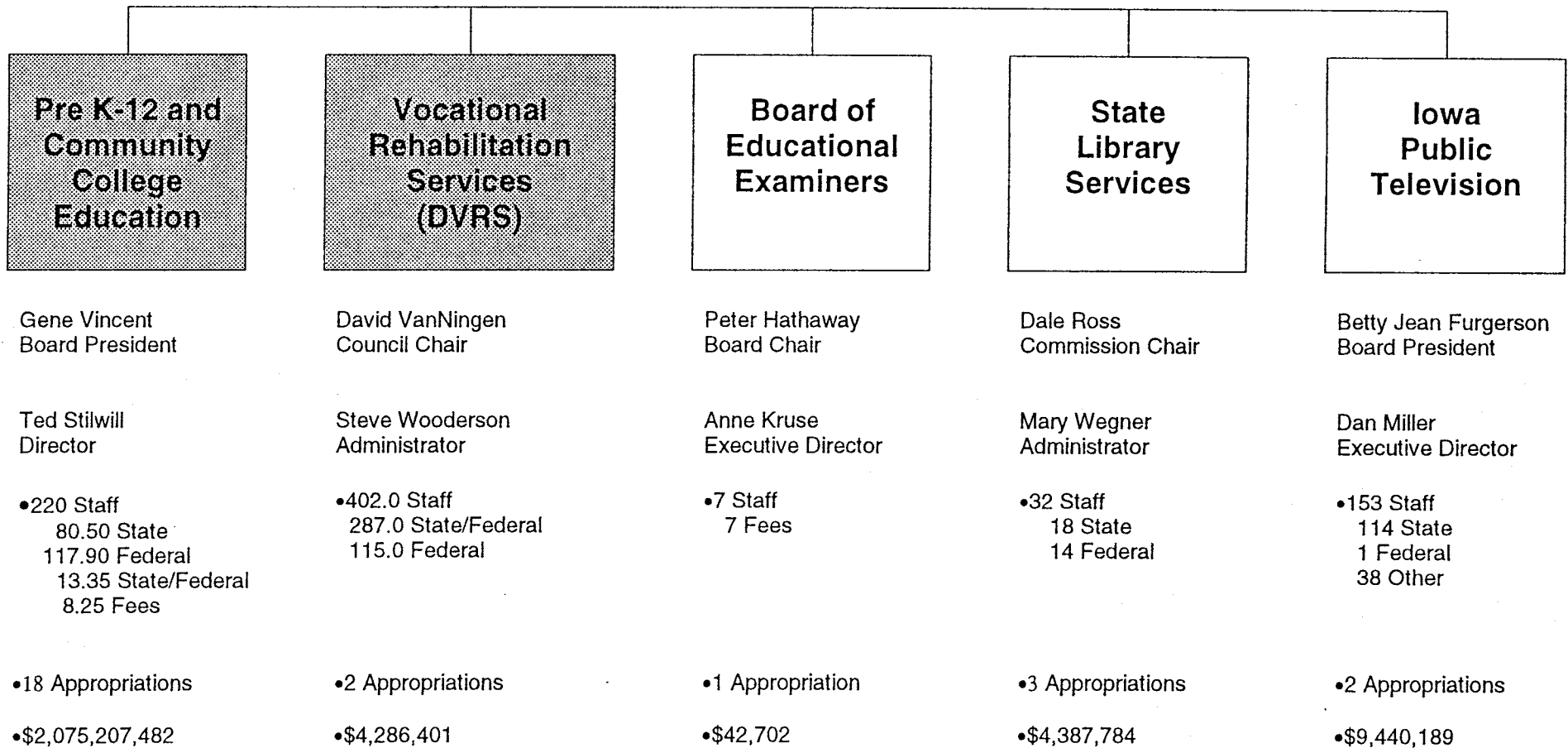
Presented by

Ted Stilwill, Director  
Iowa Department of Education

2003

# Education Partners

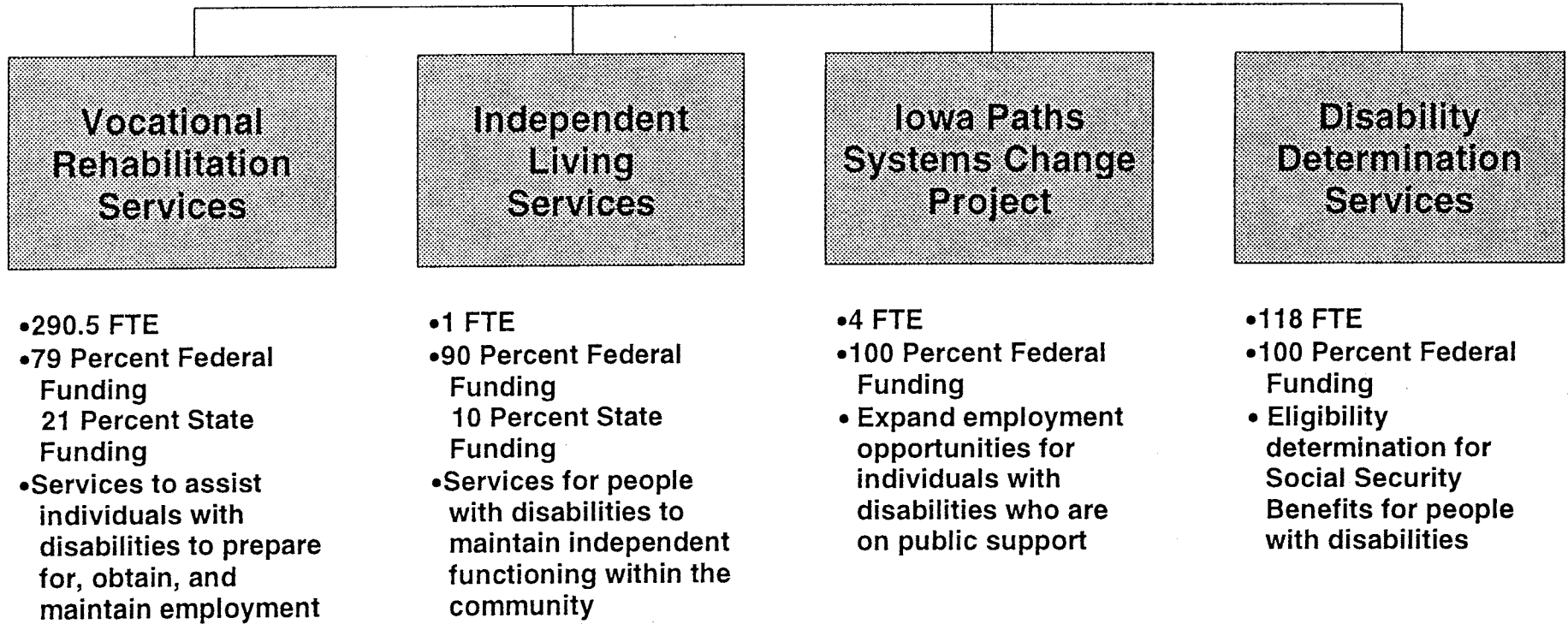
## Department of Education and Partners



# DVRS

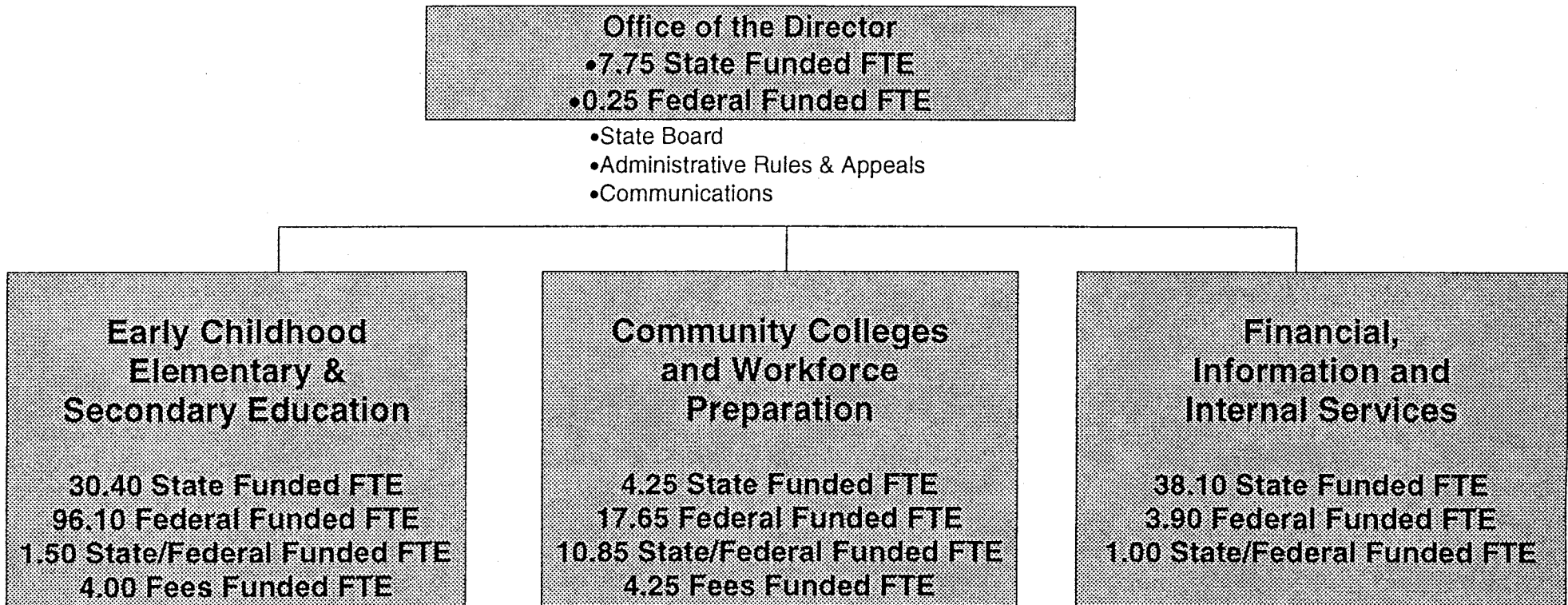
Division of Vocational Rehabilitation Services

14 Area Offices – 32 Satellite Service Units



# Department of Education

## Grimes Building Structure and Function



**Office of the Director**  
 •7.75 State Funded FTE  
 •0.25 Federal Funded FTE

- State Board
- Administrative Rules & Appeals
- Communications

**Early Childhood  
Elementary &  
Secondary Education**

30.40 State Funded FTE  
 96.10 Federal Funded FTE  
 1.50 State/Federal Funded FTE  
 4.00 Fees Funded FTE

**Community Colleges  
and Workforce  
Preparation**

4.25 State Funded FTE  
 17.65 Federal Funded FTE  
 10.85 State/Federal Funded FTE  
 4.25 Fees Funded FTE

**Financial,  
Information and  
Internal Services**

38.10 State Funded FTE  
 3.90 Federal Funded FTE  
 1.00 State/Federal Funded FTE

- Administration & School Improvement Services
- Children, Family and Community Services
- Food and Nutrition
- Instructional Services
- Practitioner Preparation & Licensure

- Services to Community Colleges
- Adult Education
- Technical/Vocational Education
- Veterans Education

- Research & Evaluation
- School Finance
- Internal Technology
- Internal Financial Management

Funding	State	Federal	State/Federal	Fees	Total	Department of Education Employees
Administrative	11.25	3.25	0.50	0.00	15.00	FY 1991 283 FTE Employees
Consultants	27.65	87.50	8.35	4.50	128.00	(64% State/36% Federal)
Technical/Support	41.60	27.15	4.50	3.75	77.00	FY 2003 220 FTE Employees
<b>Total</b>	<b>80.50</b>	<b>117.90</b>	<b>13.35</b>	<b>8.25</b>	<b>220.00</b>	(40% State/57% Federal/3% Fees)