



PATTY JUDGE  
SECRETARY OF AGRICULTURE

# IOWA DEPARTMENT OF AGRICULTURE AND LAND STEWARDSHIP

## Division of Consumer Protection and Regulatory Affairs

### Purposes—

1. Protect Iowa's consumers and producers of agricultural products
2. Facilitate the marketing of Iowa agricultural products
3. Provide for rural economic development

### Bureaus—

1. Animal Industry Bureau—Regulates Iowa's livestock and pet industries. Regulates the movement and health/testing of livestock.
2. Dairy Products Control Bureau—Inspects dairy farms and plants to assure the conditions under which Iowa's fluid milk and manufactured milk is produced and processed.
3. Entomology and Seed Bureau—Regulates and monitors the health of Iowa's grain crops including the surveillance and control of plant diseases and pests.
4. Feed and Fertilizer Bureau—Licenses and regulates manufacturers and sellers of feed and fertilizer in Iowa. Collects feed and fertilizer samples for laboratory analysis
5. Grain Warehouse Bureau—Regulates and licenses grain dealers and grain warehouse operators in Iowa. Also examines the facilities to provide assurance that facilities meet minimum financial standards.
6. Meat and Poultry Inspection Bureau—Inspects and licenses meat and poultry slaughter and processing facilities in Iowa that produce products for sale within the state of Iowa.
7. Pesticide Bureau—Licenses and regulates pesticide applicators in Iowa. Investigates and issues penalties for cases of pesticide misuse.

8. Weights and Measures Bureau—Licenses and inspects commercial weighing and measures devices including, but not limited to, gas pumps, grocery store scales, livestock scales and moisture meters.
9. Iowa Board of Veterinary Medicine—Licenses and disciplines Iowa's doctors of veterinary medicine.
10. Iowa Grain Depositors and Sellers Indemnity Board—Provides for insurance-like coverage for grain sellers and depositors for losses arising from grain dealer or grain warehouse insolvencies. Limited to 90% of loss or \$150,000

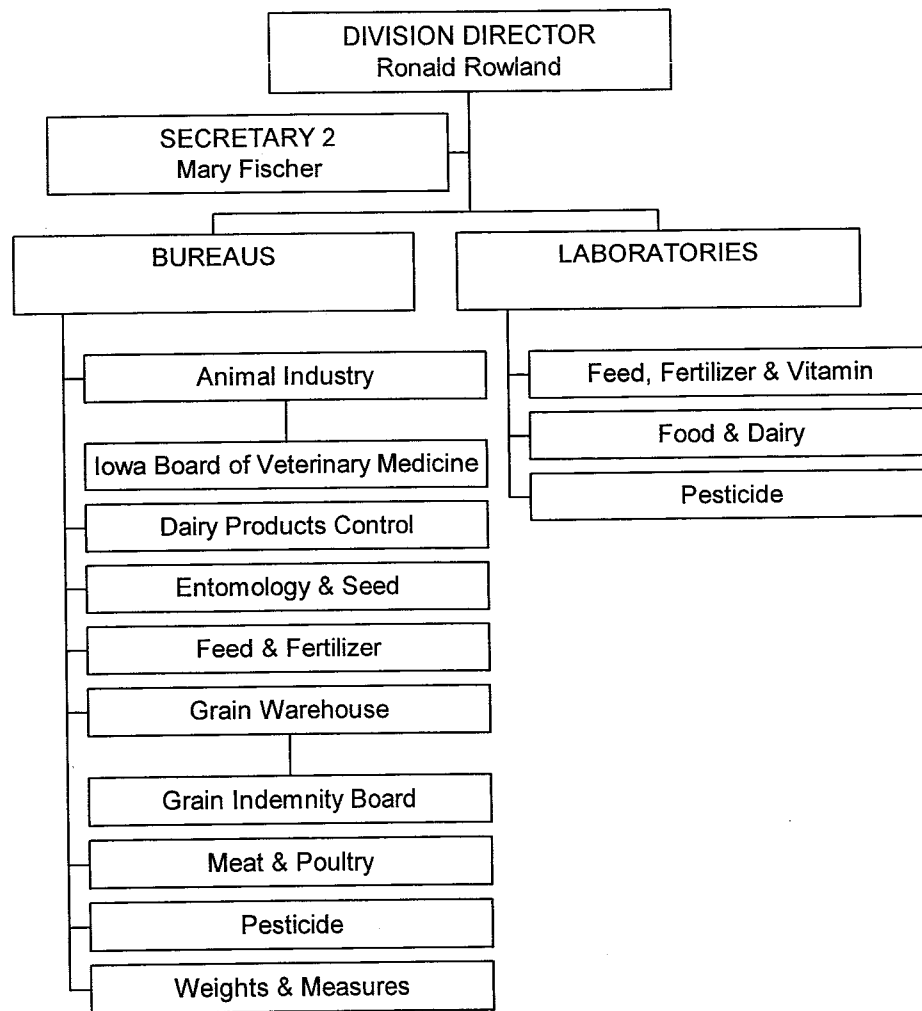
**Laboratories—**

1. Feed, Fertilizer and Vitamin Laboratory—Provides the laboratory analysis for feed and fertilizer samples.
2. Food and Dairy Laboratory—Provides the laboratory analysis for dairy and meat samples.
3. Pesticide Laboratory—Provides the laboratory analysis for the investigation of pesticide misuse cases.

Ron Rowland  
Director, Consumer Protection and Regulatory Affairs Division  
Iowa Department of Agriculture and Land Stewardship  
Wallace State Office Building  
Des Moines, Iowa 50319

515-281-3325 work  
515-281-4282 fax

# CONSUMER PROTECTION & REGULATORY AFFAIRS DIVISION ORGANIZATIONAL CHART



2/5/2003



PATY JUDGE  
SECRETARY OF AGRICULTURE

# IOWA DEPARTMENT OF AGRICULTURE AND LAND STEWARDSHIP

## Dairy Products Control Bureau Activities—

### 1. Permitting and Inspecting Various Dairy Related Facilities and Activities

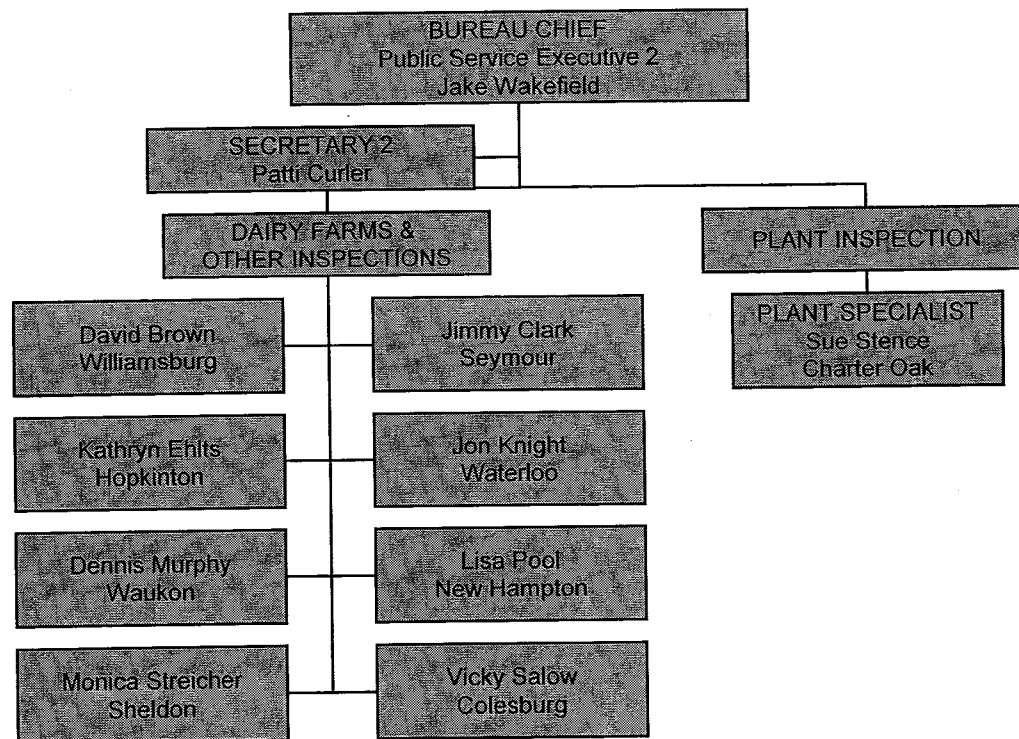
- Grade A Dairy Farms—2235—Inspected each 5-6 months
- Grade B Dairy Farms—307—Inspected each 11-12 months
- Other—Goat—41; Sheep 1—Inspected each 11-12 months
- Dairy Plants—124 Plants—Inspected quarterly, if a Grade A plant; inspected semi-annually, if a Grade B plant
- Milk Grader/Hauler—613—Annually and biennially
- Dairy Distributors—13—Quarterly
- Receiving/Transfer Stations—19-- Inspected quarterly, if a Grade A station; inspected semi-annually if a Grade B station
- Pasteurizers—78-- Inspected quarterly, if a Grade A pasteurizer; inspected semi-annually if a Grade B pasteurizer
- Reinspections—As Needed. Since July 1, 2002:
  - 170 Producer Reinspections (\$40)
  - 2 Milk Hauler Reinspections (\$40)
  - 10 Pasteurizer Reinspections (\$100)

### 2. Milk Quality Activities—

- Monthly Monitoring of Milk Quality—Somatic Cell and Bacteria Counts
- Appendix "N" Antibiotic Testing
- Finished Product Testing—all finished products produced in Iowa each month—Bacteria, coliform, pasteurization, antibiotics, and butter fat
- Industry Laboratory Certification—Every 12 months split sampling, 24 months on-site inspection
  - Fully certified laboratories—9
  - Certified Appendix N laboratories—17
  - Screening laboratories--6

Henry A. Wallace Building ■ Des Moines, Iowa 50319 ■ 515-281-5321

# DAIRY PRODUCTS CONTROL ORGANIZATIONAL CHART



2/5/2003

11/14/02

