
Prepared Remarks – Iowa Department of Education - November 7, 2013

Good morning, Co-Chairperson Dvorsky and Co-Chairperson Soderberg, and the entire Legislative Fiscal Committee. My name is Kent Farver and I am the Chief of the Bureau of Community Colleges, Division of Community Colleges, within the Iowa Department of Education (DE). We appreciate and thank you for the opportunity to discuss community college tuition and fee rates with your committee, and we look forward to providing any information we can to answer questions regarding tuition associated with the community college system.

Community colleges in Iowa have an “open door” policy, which means that nearly everyone who applies for admission may be accepted. Each of Iowa’s 15 community colleges offers comprehensive programs, including arts and sciences, college transfer (parallel) courses, career and technical education programs, training and retraining programs for the workforce of Iowa’s businesses and industries, and a variety of adult education and non-credit courses for residents of each community college district.

Each summer the DE surveys the community college business officers regarding the resident and non-resident tuition rates that the colleges will be charging for the upcoming school year and the amount of mandatory fees that will be charged. This mandatory fee information includes fees charged to each student (with the exception of online students at certain colleges). It does not include program-specific fees or special class fees that may be charged by the individual community college.

This information is used to compile our Community College Tuition and Fees Report. This report is issued annually by the DE each September and is available online through the DE website at www.educateiowa.gov. We have distributed a copy of the report that was released in September 2013. In our presentation this afternoon, I will briefly go through the information that is being presented to you and explain the contents of our report.

Overall, you will find that the average tuition and fees per credit hour is \$151.89 for the 2013-2014 school year. This increase in the average cost per credit hour is a 2.7% increase from the previous year. The tuition and fees per credit hour range from a low of \$134.00 per credit hour to a high of \$174.00 per credit hour. Iowa remains at the third highest tuition rate in the Midwest with Minnesota and South Dakota currently higher. Another focus in this report is on sources of revenue for the community colleges’ fund 1 unrestricted general fund. In fiscal year 2012, tuition and fee revenues were 58% of the total fiscal year revenue.

The report is grouped into three different areas. The first section focuses on statewide numbers for tuition, fees, and tuition and fees per credit hour. The second section discusses revenue sources for the fund 1 unrestricted general fund and shows the historical trends in inflation-adjusted terms. It also compares Iowa’s rates to the national average and provides a comparison of Iowa rates to the surrounding Midwestern states. The third and final section provides some comparisons of community college rates to Iowa’s public universities.

On page 4 of the report, we provide 10 years of historical annual resident tuition amounts (based upon two 15 credit terms) and the high and low amounts for each year, as well as the state average. Page 5 details the tuition amount per credit hour for the 10-year period showing the high and low amounts, as well as the state average per year. Page 6 details the mandatory fee amounts for the 10-year period and also provides the state average amount. These fee amounts are displayed in annual amounts based on two 15 credit terms. Page 7 provides a chart showing the 2013-2014 per credit hour charge for tuition and fees per community college.

Page 8 provides information on the fund 1 (unrestricted general fund) revenue sources for community colleges during the last 13 years. The first table (Table 4) adjusts these numbers for inflation and displays all amounts in 2012 dollars. This breakdown shows the real purchasing power of these funds in comparable terms and shows the distinction between tuition and fee revenue, local (property tax) revenue, and state general aid. The second table shows the overall percentage that each revenue source contributes to the overall fund 1 revenue total. In addition, I have provided a separate handout that provides this breakdown in nominal terms from 2008 – 2012 for each community college. This document is for your reference as this relationship in funding sources plays a large role in the determinations made by each college into future tuition and fee rates. Page 9 compares Iowa's average rate to the national average. Page 10 provides an overview of Iowa's tuition and fee rates compared to other midwestern states and a map indicating tuition costs across the country at public two-year colleges.

Pages 11-13 provides information comparing Iowa's community college tuition rates to those of Iowa's public universities.

Pages 14-17 are the appendices for the report and display detailed tables regarding tuition and fees rates by community college and comparisons to the previous year.

Once again, we thank you for the opportunity to present this information to you and welcome any questions regarding this information that you may have.

TUITION & FEES REPORT

2013-2014



COMMUNITY COLLEGES
www.educateiowa.gov/ccpublications/

Iowa Department of Education
Division of Community Colleges
Grimes State Office Building
Des Moines, Iowa
50319-0146
Phone: 515-281-8260
Fax: 515-242-5988
www.educateiowa.gov

Jeremy Varner
Administrator
515-281-8260
jeremy.varner@iowa.gov

Kent Farver, CPA
Bureau Chief
515-281-3550
kent.farver@iowa.gov

Published:
September 2013



State of Iowa
Department of Education
Grimes State Office Building
400 E. 14th Street
Des Moines, Iowa 50319-0146

State Board of Education

Rosie Hussey, President, Clear Lake
Charles C. Edwards, Jr., Vice President, Des Moines
Diane Crookham-Johnson, Oskaloosa
Sister Jude Fitzpatrick, West Des Moines
Michael L. Knedler, Council Bluffs
Valorie J. Kruse, Sioux City
Mike May, Spirit Lake
Max Phillips, Woodward
LaMetta Wynn, Clinton
Edgar Thornton, Student Member, Iowa City

Administration

Brad A. Buck, Director and Executive Officer
of the State Board of Education

Division of Community Colleges

Jeremy Varner, Administrator

Bureau of Community Colleges

Kent Farver, CPA, Bureau Chief

It is the policy of the Iowa Department of Education not to discriminate on the basis of race, creed, color, sexual orientation, gender identity, national origin, sex, disability, religion, age, political party affiliation, or actual or potential parental, family or marital status in its programs, activities, or employment practices as required by the Iowa Code sections 216.9 and 256.10(2), Titles VI and VII of the Civil Rights Act of 1964 (42 U.S.C. § 2000d and 2000e), the Equal Pay Act of 1973 (29 U.S.C. § 206, et seq.), Title IX (Educational Amendments, 20 U.S.C. §§ 1681 – 1688), Section 504 (Rehabilitation Act of 1973, 29 U.S.C. § 794), and the Americans with Disabilities Act (42 U.S.C. § 12101, et seq.). If you have questions or complaints related to compliance with this policy by the Iowa Department of Education, please contact the legal counsel for the Iowa Department of Education, Grimes State Office Building, 400 E. 14th Street, Des Moines, IA 50319-0146, telephone number: 515-281-5295, or the Director of the Office for Civil Rights, U.S. Department of Education, Citigroup Center, 500 W. Madison Street, Suite 1475, Chicago, IL 60661-4544, telephone number: 312-730-1560, FAX number: 312-730-1576, TDD number: 877-521-2172, email: OCR.Chicago@ed.gov.

Executive Summary

The average tuition for a full-time student enrolled in Iowa's community colleges will rise \$113 to \$4,210 in fiscal year 2014 (Table 1). The average tuition increase this year will be 2.8 percent. Since fiscal year 2005, tuition has grown an average of 4.8 percent per year.

The average mandatory fee charged by the community colleges increased to \$346.83 (Table 3). Five (5) community colleges do not charge students general fees (Table 15). As a result of the attached mandatory fees, the average tuition and fees per credit hour will rise to \$151.89, a 2.7 percent increase from fiscal year 2013.

In comparing regional tuition rates across the surrounding states in the Midwest, Iowa remained in third position as having the third highest average tuition rate among the eight states surveyed for 2010-2011 (the most recent data available). Minnesota continues to have the highest average tuition rates in this region (Table 7) with South Dakota second.

In fiscal year 2012, 57.8 percent of the community colleges' unrestricted operating revenue (Fund 1) came from tuition and fees. As Tables 4 and 5 show, this has gradually increased from the 1999 level (adjusted for inflation) of just over 39 percent. During that same time period and using the same inflation-adjusted numbers, state general aid has decreased from just over 45 percent in 1999, to 30 percent in 2012.

By law, community college tuition is not allowed to exceed the lowest resident tuition charged by Iowa's public universities. In fiscal year 2014, the average community college tuition will be 37 percent lower than the average public university tuition rate (Table 8).

About this Report

The community college tuition and fees report is prepared each fiscal year. The report includes trends in tuition and fees among Iowa's community colleges, as well as comparisons to Iowa's public universities and national comparisons.

Table of Contents

Resident Tuition	4
Fees	6
Revenue Sources	8
National Comparisons	10
Comparison with Iowa's Public Universities	12
Appendix	15

Resident Tuition

Table 1 lists the average tuition, lowest tuition, and highest tuition charged at Iowa's community colleges for a full-time resident student. Iowa Code limits the total tuition for Iowa residents attending community colleges so as not to exceed the lowest tuition rate per semester charged by a public university for a full-time resident student. A full-time student in this report is a student who enrolls in 15 credit hours.

Average tuition increased \$1,456 from fiscal year 2005 to fiscal year 2014, an increase of 58 percent. Tuition gains averaged 4.82 percent each year.

The spread between tuition amounts has increased since 2005. The difference from the highest annual tuition to lowest annual tuition has increased from \$420 in fiscal year 2005 to \$667 in fiscal year 2014. As a percentage of the average tuition, this variance has increased from 15 percent in 2005 to over 16 percent in 2014.

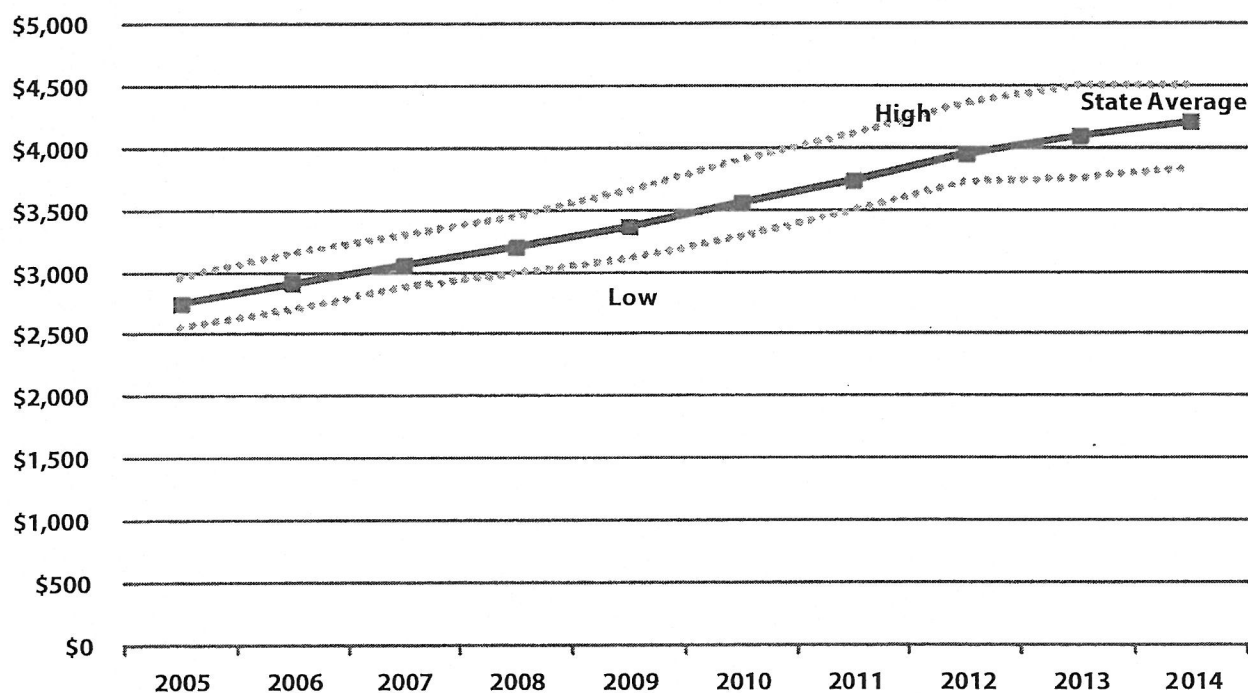
Table 1 - Annual Iowa Community Colleges Full-Time Resident Tuition

Fiscal Year	2005	2006	2007	2008	2009	2010	2011	2012	2013	2014
Low	\$2,550	\$2,700	\$2,880	\$2,996	\$3,106	\$3,293	\$3,491	\$3,720	\$3,758	\$3,833
High	\$2,970	\$3,150	\$3,300	\$3,450	\$3,660	\$3,900	\$4,110	\$4,350	\$4,500	\$4,500
State Average	\$2,754	\$2,916	\$3,053	\$3,199	\$3,368	\$3,566	\$3,743	\$3,948	\$4,097	\$4,210
Std. Deviation	109.67	119.04	127.77	140.38	159.98	180.67	195.18	185.55	211.54	218.93

SOURCE: 2012-2013 Academic Year Iowa's Community Colleges Tuition and Fees Report, issued September 2012; Electronic 2013-2014 tuition survey data submitted by Iowa's community colleges and compiled by the Iowa Department of Education. See Table 12.

NOTE: Annual rates are based on a projection of fall tuition rates. Based upon 15 credits per term.

Figure 1 - Annual Iowa Community Colleges Full-Time Resident Tuition



SOURCE: 2012-2013 Academic Year Iowa's Community Colleges Tuition and Fees Report, issued September 2012; Electronic 2013-2014 tuition survey data submitted by Iowa's community colleges and compiled by the Iowa Department of Education. See Table 12.

NOTE: Annual rates are based on a projection of fall tuition rates. Based upon 15 credits per term.

Table 12 in the appendix lists the full-time resident tuition by college for arts and sciences and career and technical education (CTE) programs.

The tuition per credit hour is shown in Table 2. Over the past ten years, the average tuition cost per credit hour has increased from \$91.79 to \$140.32 per credit hour. Courses generally range from three to five credit hours in a community college.

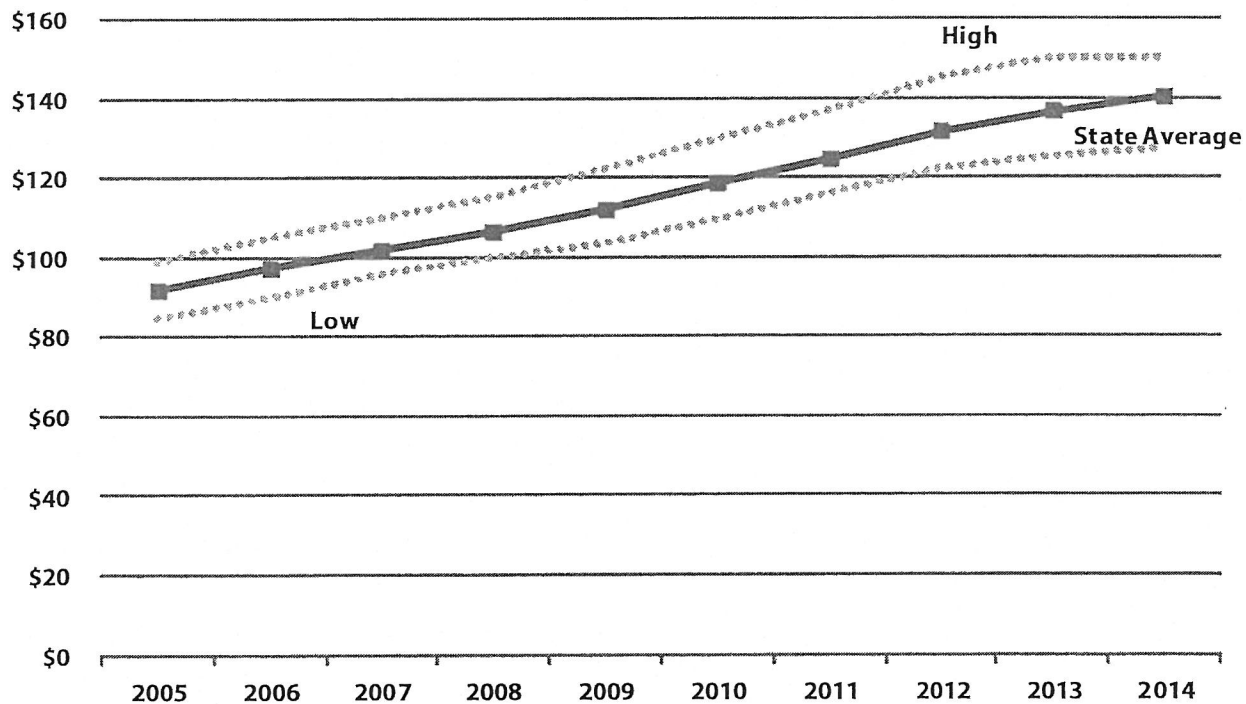
Similar to average tuition, the variance between the community colleges has increased. The difference between the highest per credit hour rate and lowest per credit hour rate increased from \$14 in fiscal year 2005 to \$22.75 in fiscal year 2014. Table 13 in the appendix lists tuition per credit hour by college.

Table 2 - Fall Resident Tuition Per Credit Hour

Fiscal Year	2005	2006	2007	2008	2009	2010	2011	2012	2013	2014
Low	\$85.00	\$90.00	\$96.00	\$99.85	\$103.55	\$109.76	\$116.35	\$122.20	\$125.25	\$127.25
High	\$99.00	\$105.00	\$110.00	\$115.00	\$122.00	\$130.00	\$137.00	\$145.00	\$150.00	\$150.00
State Average	\$91.79	\$97.20	\$101.77	\$106.62	\$112.27	\$118.85	\$124.76	\$131.61	\$136.56	\$140.32
Std. Deviation	\$3.66	\$3.97	\$4.26	\$4.68	\$5.33	\$6.16	\$6.51	\$6.18	\$7.05	\$7.30

SOURCE: 2012-2013 Academic Year, Iowa's Community Colleges Tuition and Fees Report, issued September 2012; Electronic 2013-2014 tuition survey data submitted by Iowa's community colleges and compiled by the Iowa Department of Education. See Table 13.

Figure 2 - Fall Resident Tuition Per Credit Hour



SOURCE: 2012-2013 Academic Year, Iowa's Community Colleges Tuition and Fees Report, issued September 2012; Electronic 2013-2014 tuition survey data submitted by Iowa's community colleges and compiled by the Iowa Department of Education.

Mandatory Fees

Table 3 reflects the basic mandatory fees charged at each community college. Some colleges do not charge a separate fee in addition to their tuition charge. Moreover, these fees do not include any program-specific fees.

In fiscal year 2014, average fees will increase to

\$346.83. Average mandatory tuition fees have grown 2.5 percent per year since fiscal year 2005.

Table 15 in the appendix of this report lists regular, recurring fees charged by each college. This is not an all-inclusive list of fees charged by the individual community colleges.

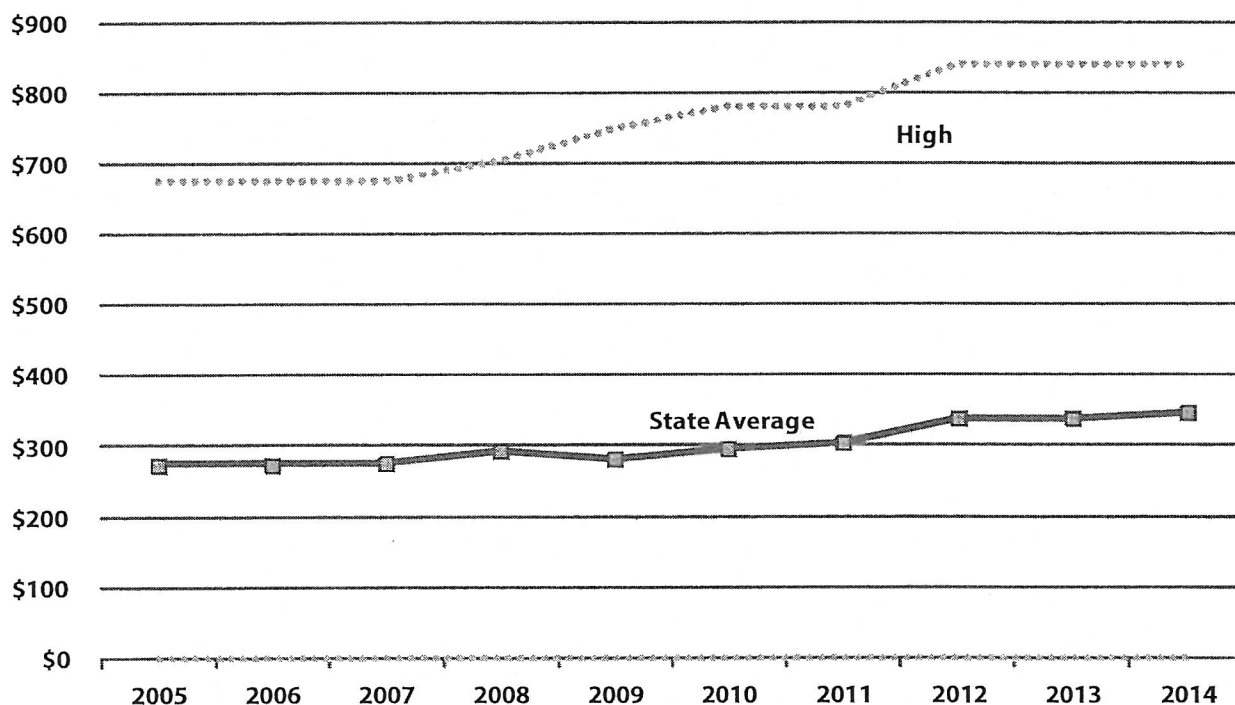
Table 3 - Annual Iowa Community Colleges Full-Time Mandatory Fees

Fiscal Year	2005	2006	2007	2008	2009	2010	2011	2012	2013	2014
Low	\$0	\$0	\$0	\$0	\$0	\$0	\$0	\$0	\$0	\$0
High	\$675	\$675	\$675	\$705	\$750	\$780	\$780	\$840	\$840	\$840
State Average	\$274.57	\$274.77	\$275.93	\$292.37	\$280.73	\$296.39	\$303.99	\$339.09	\$339.69	\$346.83

SOURCE: 2012-2013 Academic Year, Iowa's Community Colleges, Tuition and Fees Report, Issued September 2012; Electronic 2013-2014 tuition survey data submitted by Iowa's community colleges and compiled by the Iowa Department of Education. See Tables 12.

NOTE: Annual rates are based on a projection of fall tuition rates. Based upon 15 credits per term.

Figure 3 - Annual Iowa Community Colleges Full-Time Mandatory Fees



SOURCE: 2012-2013 Academic Year, Iowa's Community Colleges, Tuition and Fees Report, Issued September 2012; Electronic 2013-2014 tuition survey data submitted by Iowa's community colleges and compiled by the Iowa Department of Education. See Tables 12.

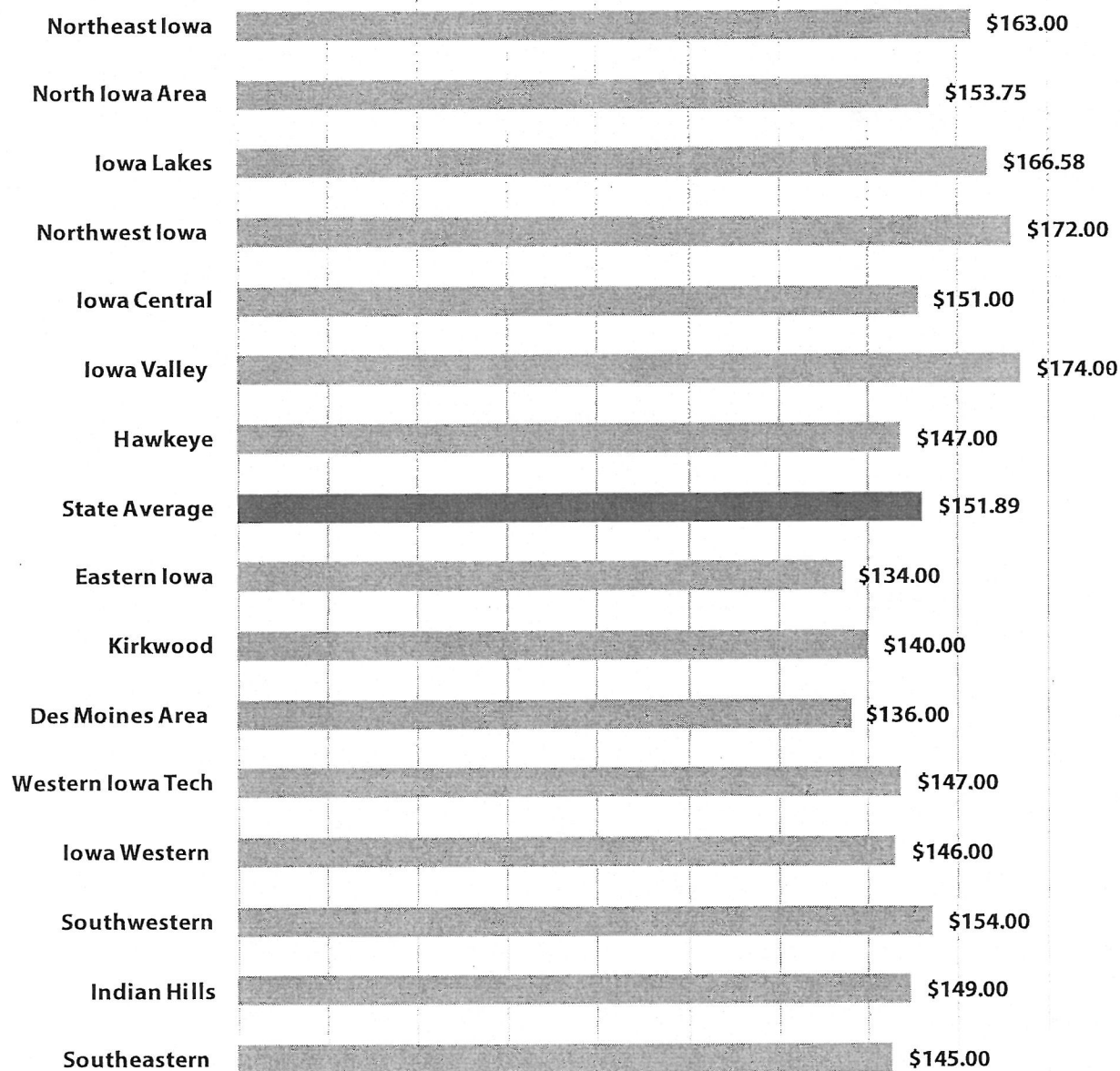
NOTE: Annual rates are based on a projection of fall tuition rates. Based upon 15 credits per term.

Tuition and Mandatory Fees per Credit Hour

Figure 4 shows the per credit hour tuition and mandatory fees. Notwithstanding additional fees, this represents the cost of enrolling in a community college. The average tuition and mandatory fees charged per

credit hour will increase \$3.99 per hour in fiscal 2014 to \$151.89. This is a 2.69 percent increase from the previous year. See Table 13 for a listing of individual tuition and fees charged by each community college.

Figure 4 - Resident Tuition and Mandatory Fees Per Credit Hour, Fiscal Year 2014



SOURCE: Appendix -Table 11 for Tuition and Fees amounts. See Table 13.

Revenue Sources for Iowa's Community Colleges

Tables 4 and 5 reflect the major sources of revenue for the system of Iowa's community colleges adjusted for inflation. Tuition and fees are the largest share of general operating fund revenues.

This revenue comprises just under 58 percent of total revenues. State, local, and federal funding shares remain at

25-year lows (see Figure 5). State support has been reduced from a high of just over 45 percent in fiscal year 1999 down to 30 percent in fiscal year 2012. Local funding is down from just under 6 percent in fiscal year 1999 down to just under 5 percent in fiscal year 2012.

Table 4 - Adjusted General Operating Fund Revenues by Source

	Tuition & Fees	Local	State	Federal	Other Income
1999	\$159,382,585	\$24,098,900	\$186,748,446	\$13,112,267	\$25,652,842
2000	\$162,268,014	\$24,418,886	\$190,110,439	\$14,232,482	\$27,813,729
2001	\$163,743,500	\$24,562,037	\$191,037,305	\$14,264,727	\$26,220,021
2002	\$184,205,726	\$25,128,392	\$176,091,802	\$14,760,967	\$24,076,552
2003	\$196,977,331	\$25,214,826	\$172,881,250	\$15,241,344	\$25,262,319
2004	\$212,105,501	\$25,179,094	\$167,538,845	\$15,726,920	\$37,468,503
2005	\$228,219,830	\$23,739,812	\$166,140,864	\$14,733,983	\$30,397,214
2006	\$226,235,134	\$23,302,369	\$170,977,073	\$14,071,890	\$34,845,113
2007	\$232,313,224	\$24,000,727	\$178,696,493	\$13,380,161	\$40,617,909
2008	\$236,943,894	\$23,542,490	\$184,659,184	\$12,580,815	\$41,608,187
2009	\$254,716,688	\$24,847,511	\$193,572,292	\$12,815,236	\$27,404,419
2010	\$293,496,445	\$25,405,581	\$155,604,066	\$36,512,244	\$32,696,593
2011	\$317,661,246	\$26,149,612	\$163,398,137	\$14,901,978	\$32,429,507
2012	\$314,657,804	\$26,471,137	\$163,774,647	\$10,142,936	\$29,392,828

SOURCE: 1999 through 2011 data taken from the 2011-2012 Academic Year, Iowa's Community Colleges Tuition and Fees Report, issued September 2012 (source: AS-15E's, Fund 1); Annual Report Fiscal Year 2012 (AS-15E), Unrestricted General Fund, Fund 1. See Table 16.

NOTE: Amounts are adjusted for inflation to 2012 levels using December rates from the Consumer Price Index-Urban. Revenues for unrestricted funds only.

Table 5 - General Operating Fund Revenues by Source as a Percentage of Total Revenues

	Tuition & Fees	Local	State	Federal	Other Income
1999	38.97%	5.89%	45.66%	3.21%	6.27%
2000	38.74%	5.83%	45.39%	3.40%	6.64%
2001	39.00%	5.85%	45.50%	3.40%	6.25%
2002	43.42%	5.92%	41.51%	3.48%	5.67%
2003	45.22%	5.79%	39.69%	3.50%	5.80%
2004	46.31%	5.50%	36.58%	3.43%	8.18%
2005	49.27%	5.12%	35.87%	3.18%	6.56%
2006	48.19%	4.96%	36.42%	3.00%	7.42%
2007	47.51%	4.91%	36.54%	2.74%	8.31%
2008	47.45%	4.71%	36.98%	2.52%	8.33%
2009	49.62%	4.84%	37.71%	2.50%	5.34%
2010	53.98%	4.67%	28.62%	6.72%	6.01%
2011	57.28%	4.72%	29.47%	2.69%	5.85%
2012	57.79%	4.86%	30.08%	1.86%	5.40%

SOURCE: 1999 through 2011 data taken from the 2011-2012 Academic Year, Iowa's Community Colleges Tuition and Fees Report, issued September 2012 (Source: AS-15E's, Fund 1); Annual Report Fiscal Year 2012 (AS-15E), Unrestricted General Fund, Fund 1. See Table 16.

NOTE: Amounts are adjusted for inflation to 2012 levels using December rates from the Consumer Price Index-Urban. Revenues for unrestricted funds only.

National Comparison of Tuition and Fees

The following information uses data from *The Chronicle of Higher Education, Almanac Issue 2013*. This report provides data through 2012, which is the most recent national higher education tuition data available. The information will differ from the previous section as the *Chronicle* data is based on information supplied to the U.S. Department of Education and includes student fees. Iowa Department of Education tables are based on information provided and verified by Iowa's community colleges to the Iowa Department of Education.

From fiscal year 2005 to fiscal year 2012, average

tuition at Iowa's community colleges increased 32 percent while the national average increased 43 percent (see Table 6). Tuition and fees are still 44 percent above the national average.

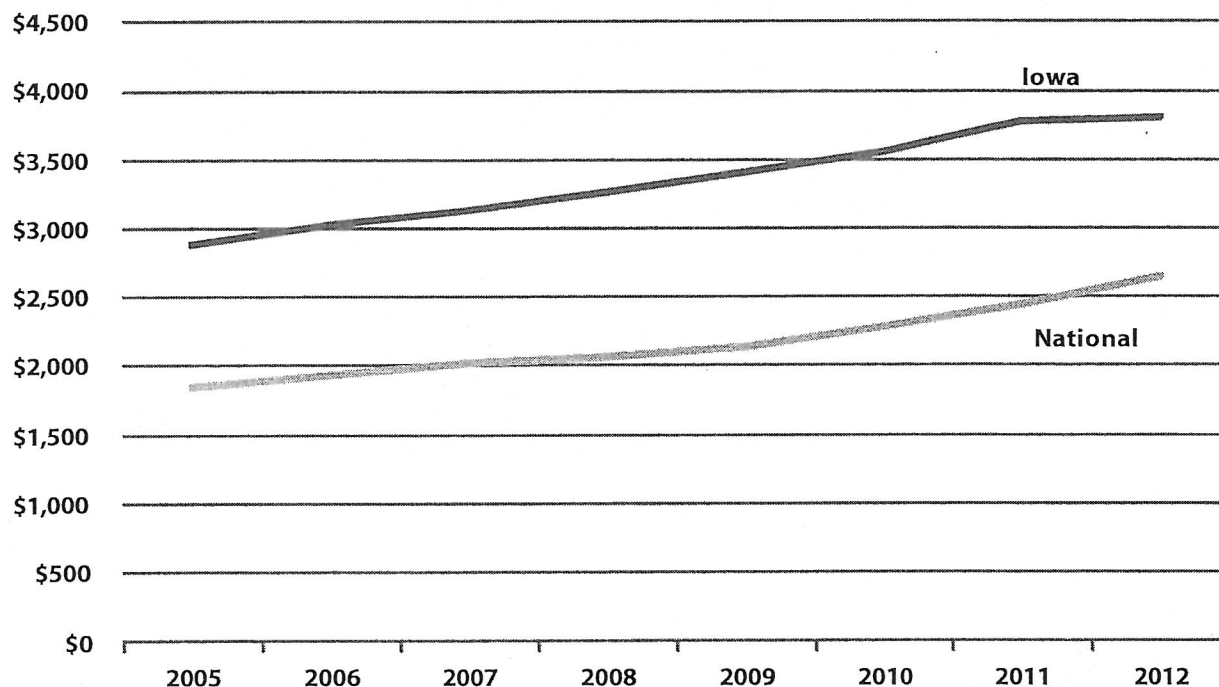
Iowa has the second highest tuition and fees level of its contiguous states (see Table 7). Minnesota continues to have the highest average tuition rates in this region. Iowa has the second highest percentage change in tuition and fees from 2005-2012.

Table 6 - National and State Average Community College Tuition and Fees

	Fiscal Year								Change	Change
	2005	2006	2007	2008	2009	2010	2011	2012	2005-2012	2005-2012
National	\$1,847	\$1,935	\$2,017	\$2,063	\$2,137	\$2,285	\$2,439	\$2,647	\$800	43%
Iowa	\$2,876	\$3,032	\$3,139	\$3,264	\$3,415	\$3,549	\$3,769	\$3,811	\$935	32%

SOURCE: 2012-2013 Academic Year, Iowa's Community Colleges, Tuition and Fees Report, issued September 2012. *The Chronicle of Higher Education Almanac Issue 2012-2013*.

Figure 6 - National and State Average Community College Tuition and Fees



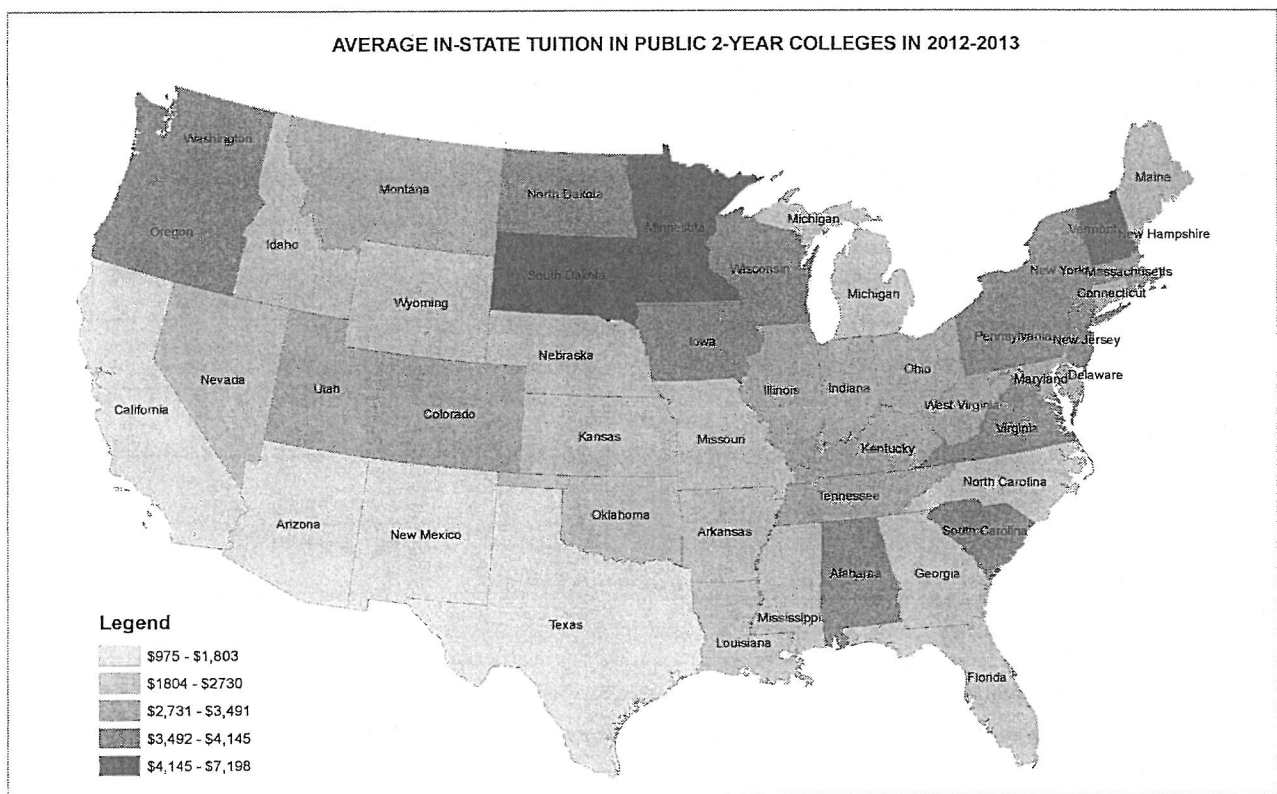
SOURCE: 2012-2013 Academic Year, Iowa's Community Colleges, Tuition and Fees Report, issued September 2012. *The Chronicle of Higher Education Almanac Issue 2012-2013*.

Regional Comparison of Tuition and Fees

Table 7 - Comparison of Average Tuition and Fees with Surrounding States

	2004	2005	2006	2007	2008	2009	2010	2011	Change 2004-2011	Change 2004-2012
Minnesota	\$2,812	\$3,839	\$4,085	\$4,359	\$4,535	\$4,614	\$4,791	\$4,965	\$2,153	76.6%
South Dakota	\$3,414	\$2,840	\$3,154	\$3,495	\$3,730	\$3,931	\$4,357	\$4,700	\$1,286	37.7%
Iowa	\$2,686	\$2,876	\$3,032	\$3,139	\$3,264	\$3,415	\$3,549	\$3,769	\$1,083	40.3%
Wisconsin	\$2,583	\$2,796	\$2,965	\$3,163	\$3,694	\$3,536	\$3,543	\$3,695	\$1,112	43.1%
Missouri	\$1,940	\$2,128	\$2,247	\$2,284	\$2,385	\$2,456	\$2,406	\$2,440	\$500	25.8%
Illinois	\$1,792	\$1,952	\$2,104	\$2,252	\$2,377	\$2,519	\$2,670	\$2,947	\$1,155	64.5%
Kansas	\$1,783	\$1,882	\$1,938	\$1,942	\$2,029	\$2,091	\$2,212	\$2,463	\$680	38.1%
Nebraska	\$1,678	\$1,772	\$1,899	\$1,991	\$2,128	\$2,220	\$2,248	\$2,391	\$713	42.5%

SOURCE: 2012-2013 Academic Year, Iowa's Community Colleges, Tuition and Fees Report, issued September 2012. *The Chronicle of Higher Education Almanac Issue 2012-2013.*



SOURCE: *The Chronicle of Higher Education* web site (Chronicle.com), information for 2012-2013.

Comparison of Tuition and Fees with Iowa's Public Universities

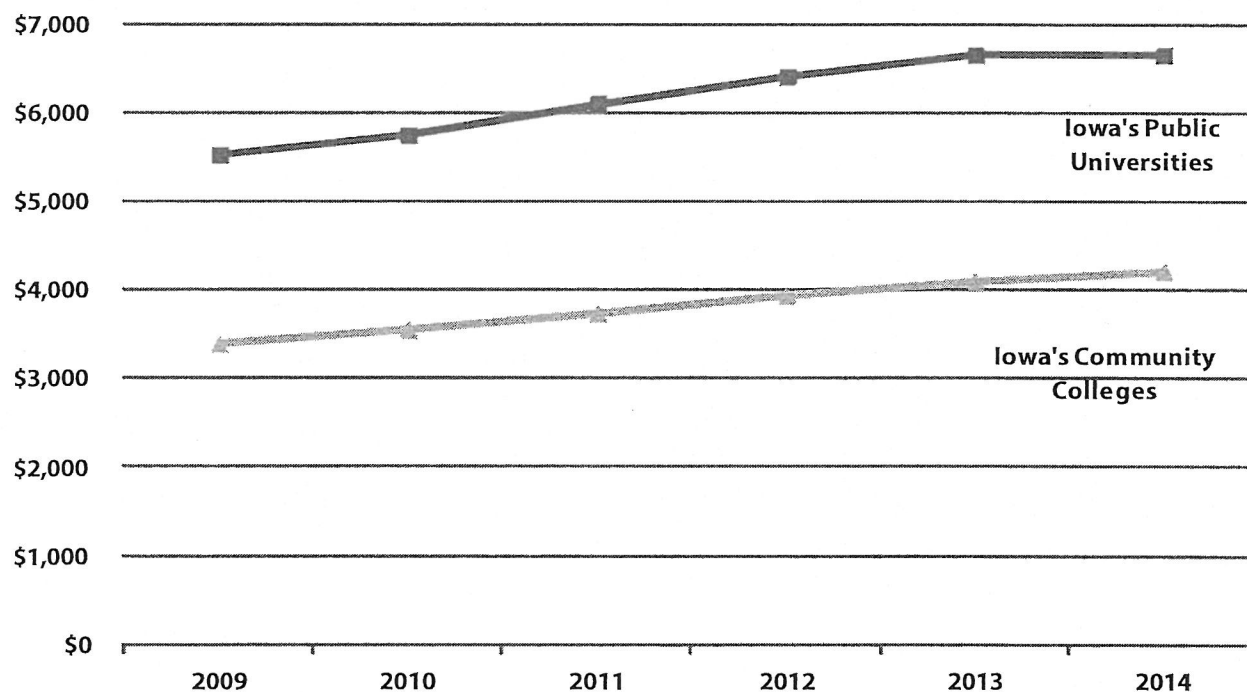
Tables 8, 9, and 10 provide a comparison of Iowa's community colleges average annual full-time resident tuition rate to the average tuition rate of Iowa's public universities. By law, community college tuition cannot exceed the minimum tuition at the public universities. In 2014, community college tuition will be 37 percent lower than the public university average tuition. Iowa's public universities froze their tuition in fiscal year 2014 compared to the 2.75 percent gain for Iowa community colleges.

Table 8 - Annual Full-Time Tuition Rates Comparison

	Fiscal Year						Change 2009-2014	Change 2009-2014
	2009	2010	2011	2012	2013	2014		
Iowa's Community Colleges	\$ 3,390	\$ 3,566	\$ 3,743	\$ 3,948	\$4,097	\$4,210	\$820	24%
Iowa's Public Universities	\$ 5,532	\$ 5,765	\$ 6,111	\$ 6,417	\$6,658	\$6,658	\$1,126	20%

SOURCE: 2012-2013 Academic Year, Iowa's Community Colleges Tuition and Fees Report, issued September 2012; Electronic 2013-2014 tuition survey data submitted by Iowa's community colleges and compiled by the Iowa Department of Education; Public university information obtained from the Iowa Board of Regents' website.

Figure 8 - Annual Full-Time Tuition Comparison



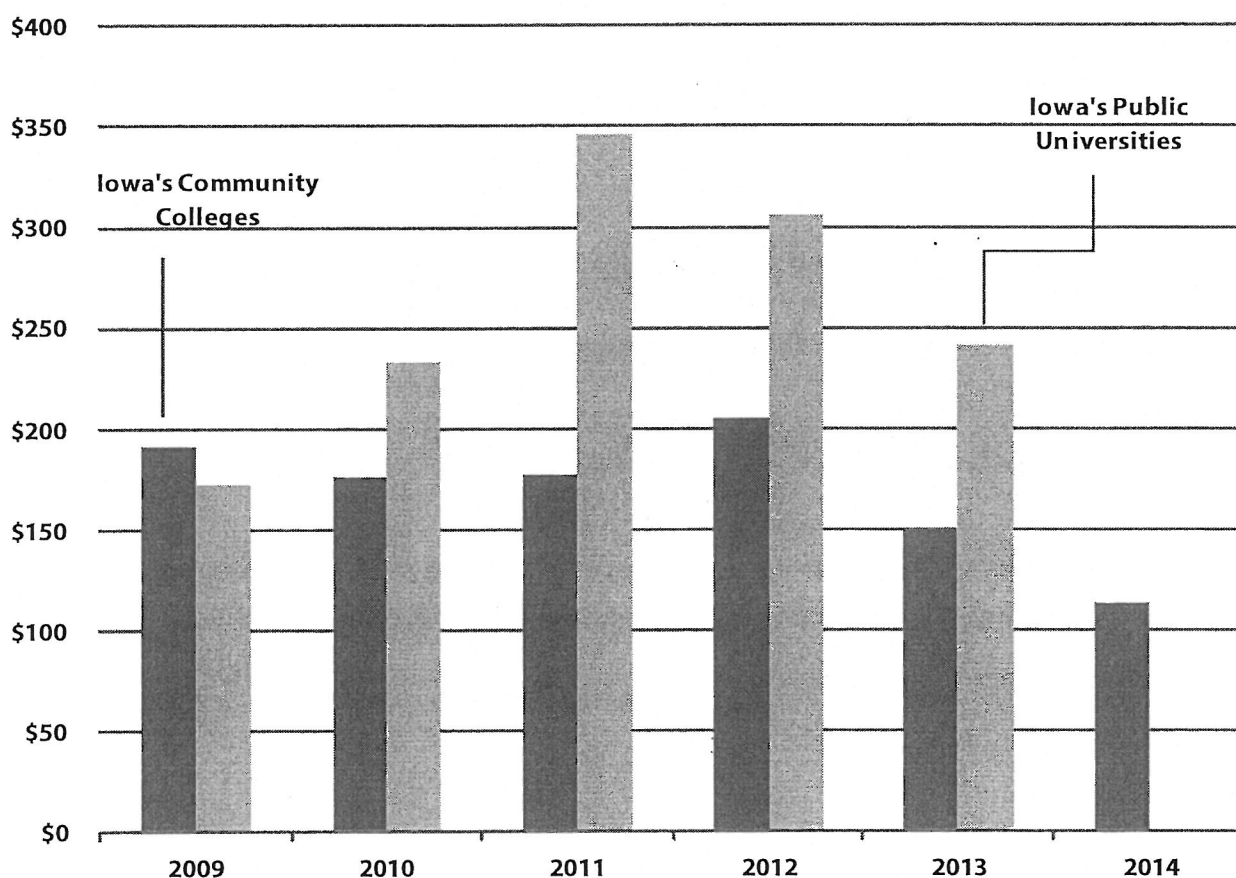
SOURCE: 2012-2013 Academic Year, Iowa's Community Colleges Tuition and Fees Report, issued September 2012; Electronic 2013-2014 tuition survey data submitted by Iowa's community colleges and compiled by the Iowa Department of Education; Public university information obtained from the Iowa Board of Regents' website.

NOTE: Annual rates are based on a projection of fall tuition rates. 15 hours per semester for Iowa's community colleges; full-time for Iowa's public universities.

Table 9 - Annual Full-Time Tuition Increase for Iowa's Public Universities and Iowa's Community Colleges

Fiscal Year	2009	2010	2011	2012	2013	2014
Iowa's Community Colleges	\$191	\$176	\$177	\$205	\$149	\$113
Iowa's Public Universities	\$172	\$233	\$346	\$306	\$241	\$0

SOURCE: 2012-2013 Academic Year Iowa's Community Colleges Tuition and Fees Report, issued September 2012; Electronic 2013-2014 tuition survey data submitted by Iowa's community colleges and compiled by the Iowa Department of Education; Public university information obtained from the Iowa Board of Regents' website.

Figure 9 - Annual Average Full-Time Tuition Increase

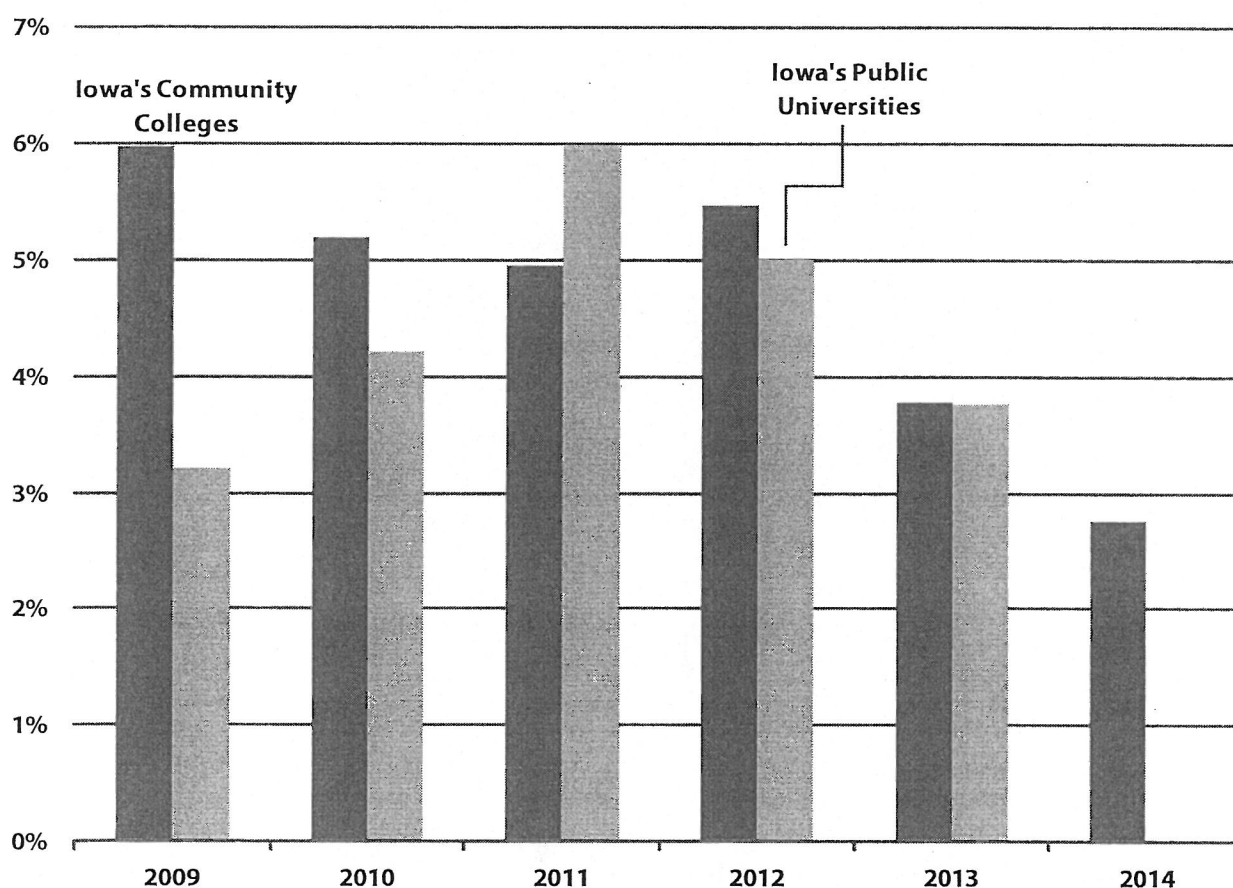
SOURCE: 2012-2013 Academic Year Iowa's Community Colleges Tuition and Fees Report, issued September 2012; Electronic 2013-2014 tuition survey data submitted by Iowa's community colleges and compiled by the Iowa Department of Education; Public university information obtained from the Iowa Board of Regents' website.

NOTE: Annual rates are based on a projection of fall tuition rates. 15 hours per semester for Iowa's community colleges; full-time for Iowa's public universities.

Table 10 - Annual Average Percentage Increase in Full-Time Tuition

	2009	2010	2011	2012	2013	2014
Iowa's Community Colleges	5.97%	5.86%	4.96%	5.49%	3.77%	2.76%
Iowa's Public Universities	3.21%	4.21%	6.00%	5.00%	3.76%	0%

SOURCE: 2012-2013 Academic Year, Iowa's Community Colleges, Tuition and Fees Report, issued September 2012; Electronic 2013-2014 tuition survey data submitted by Iowa's community colleges and compiled by the Iowa Department of Education; public university information obtained from the Iowa Board of Regents' website.

Figure 10 - Annual Average Percentage Increase in Full-Time Tuition

SOURCE: 2011-2012 Academic Year, Iowa's Community Colleges, Tuition and Fees Report, issued September 2011; Electronic 2012-2013 tuition survey data submitted by Iowa's community colleges and compiled by the Iowa Department of Education; Public university information obtained from the Iowa Board of Regents' website.

NOTE: Annual rates are based on a projection of fall tuition rates. 15 hours per semester for Iowa's community colleges; full-time for Iowa's public universities.

Appendix

Table 11 - Resident Tuition and Fees Based on 12 Credit Hours per Term: 2012-2014

	2012-2013			2013-2014			Increases		
	Tuition	Fees	Total	Tuition	Fees	Total	Tuition	Fees	Total
Northeast Iowa	\$3,600.00	\$3,12.00	\$3,912.00	\$3,600.00	\$312.00	\$3,912.00	\$0.00	\$0.00	\$0.00
North Iowa Area	\$3,006.00	\$598.32	\$3,604.32	\$3,066.00	\$624.00	\$3,690.00	\$60.00	\$25.68	\$85.68
Iowa Lakes	\$3,504.00	\$422.00	\$3,926.00	\$3,576.00	\$422.00	\$3,998.00	\$72.00	\$0.00	\$72.00
Northwest Iowa	\$3,312.00	\$672.00	\$3,984.00	\$3,456.00	\$672.00	\$4,128.00	\$144.00	\$0.00	\$144.00
Iowa Central	\$3,168.00	\$336.00	\$3,504.00	\$3,288.00	\$336.00	\$3,624.00	\$120.00	\$0.00	\$120.00
Iowa Valley	\$3,456.00	\$624.00	\$4,080.00	\$3,552.00	\$624.00	\$4,176.00	\$96.00	\$0.00	\$96.00
Hawkeye	\$3,288.00	\$144.00	\$3,432.00	\$3,384.00	\$144.00	\$3,528.00	\$96.00	\$0.00	\$96.00
Eastern Iowa	\$3,148.80	\$0.00	\$3,148.80	\$3,216.00	\$0.00	\$3,216.00	\$67.20	\$0.00	\$67.20
Kirkwood	\$3,192.00	\$0.00	\$3,192.00	\$3,360.00	\$0.00	\$3,360.00	\$168.00	\$0.00	\$168.00
Des Moines Area	\$3,192.00	\$0.00	\$3,192.00	\$3,264.00	\$0.00	\$3,264.00	\$72.00	\$0.00	\$72.00
Western Iowa Tech	\$3,072.00	\$372.00	\$3,444.00	\$3,120.00	\$408.00	\$3,528.00	\$48.00	\$36.00	\$84.00
Iowa Western	\$3,096.00	\$312.00	\$3,408.00	\$3,168.00	\$336.00	\$3,504.00	\$72.00	\$24.00	\$96.00
Southwestern	\$3,264.00	\$288.00	\$3,552.00	\$3,408.00	\$288.00	\$3,696.00	\$144.00	\$0.00	\$144.00
Indian Hills	\$3,456.00	\$0.00	\$3,456.00	\$3,576.00	\$0.00	\$3,576.00	\$120.00	\$0.00	\$120.00
Southeastern	\$3,408.00	\$0.00	\$3,408.00	\$3,480.00	\$0.00	\$3,480.00	\$72.00	\$0.00	\$72.00
State Average	\$3,277.52	\$272.02	\$3,549.54	\$3,367.60	\$277.73	\$3,645.33	\$90.08	\$5.71	\$95.79
Std. Dev. (C.C.)	\$169.23	\$233.34	\$287.33	\$169.20	\$237.30	\$283.54	\$41.93	\$11.67	\$39.13
Iowa Public Universities	\$6,658	\$1,148	\$7,806	\$6,658	\$1,166	\$7,824	\$0.00	\$18.13	\$18.13
									.23%

Source: 2012-2013 Academic Year, Iowa Community Colleges, Tuition and Fees Report, Issued September 2012; Electronic 2013-2014 tuition survey data submitted by Iowa Community Colleges and compiled by the Iowa Department of Education. Iowa Board of Regents, Tuition Rates. Note: Indians Hills shown for three 12 week terms. Eight credits per term equals 12 per semester. Only fees charged for all students are included. Other fees for lab or specific programs are not included.

Table 12 - Resident Tuition and Fees Based on 15 Credit Hours Per Term: 2012-2014

	2012-2013			2013-2014			Increases		
	Tuition	Fees	Total	Tuition	Fees	Total	Tuition	Fees	Total
Northeast Iowa	\$4,500.00	\$390.00	\$4,890.00	\$4,500.00	\$390.00	\$4,890.00	\$0.00	\$0.00	\$0.00
North Iowa Area	\$3,757.50	\$747.90	\$4,505.40	\$3,832.50	\$780.00	\$4,612.50	\$75.00	\$32.10	\$107.10
Iowa Lakes	\$4,380.00	\$522.50	\$4,902.50	\$4,470.00	\$522.50	\$4,992.50	\$90.00	\$0.00	\$90.00
Northwest Iowa	\$4,140.00	\$840.00	\$4,980.00	\$4,320.00	\$840.00	\$5,160.00	\$180.00	\$0.00	\$180.00
Iowa Central	\$3,960.00	\$420.00	\$4,380.00	\$4,110.00	\$420.00	\$4,530.00	\$150.00	\$0.00	\$150.00
Iowa Valley	\$4,320.00	\$780.00	\$5,100.00	\$4,440.00	\$780.00	\$5,220.00	\$120.00	\$0.00	\$120.00
Hawkeye	\$4,110.00	\$180.00	\$4,290.00	\$4,230.00	\$180.00	\$4,410.00	\$120.00	\$0.00	\$120.00
Eastern Iowa	\$3,936.00	\$0.00	\$3,936.00	\$4,020.00	\$0.00	\$4,020.00	\$84.00	\$0.00	\$84.00
Kirkwood	\$3,990.00	\$0.00	\$3,990.00	\$4,200.00	\$0.00	\$4,200.00	\$210.00	\$0.00	\$210.00
Des Moines Area	\$3,990.00	\$0.00	\$3,990.00	\$4,080.00	\$0.00	\$4,080.00	\$90.00	\$0.00	\$90.00
Western Iowa Tech	\$3,840.00	\$465.00	\$4,305.00	\$3,900.00	\$510.00	\$4,410.00	\$60.00	\$45.00	\$105.00
Iowa Western	\$3,870.00	\$390.00	\$4,260.00	\$3,960.00	\$420.00	\$4,380.00	\$90.00	\$30.00	\$120.00
Southwestern	\$4,080.00	\$360.00	\$4,440.00	\$4,260.00	\$360.00	\$4,620.00	\$180.00	\$0.00	\$180.00
Indian Hills	\$4,320.00	\$0.00	\$4,320.00	\$4,470.00	\$0.00	\$4,470.00	\$150.00	\$0.00	\$150.00
Southeastern	\$4,260.00	\$0.00	\$4,260.00	\$4,350.00	\$0.00	\$4,350.00	\$90.00	\$0.00	\$90.00
State Average	\$4,096.90	\$339.69	\$4,436.59	\$4,209.50	\$346.83	\$4,556.33	\$112.60	\$7.14	\$119.74
Std. Dev. (S.C.)	\$211.54	\$291.47	\$358.72	\$211.50	\$296.42	\$354.01	\$52.41	\$14.58	\$48.91
Iowa Public Universities	\$6,658	\$1,148	\$7,806	\$6,658	\$1,166	\$7,824	\$0.00	\$18.13	\$18.13

Source: 2012-2013 Academic Year, Iowa Community Colleges, Tuition and Fees Report, Issued September 2012; Electronic 2013-2014 tuition survey data submitted by Iowa Community Colleges and compiled by the Iowa Department of Education, Iowa Board of Regents, Tuition Rates. Note: Indians Hills shown for three 12 week terms. Only fees charged for all students are included. Other fees for lab or specific programs are not included.

Table 13 - Resident Tuition and Fees Per Credit Hour: 2012-2014 Academic Years

	Tuition per Semester Hour			Tuition and Fees per Hour		
	2012-2013	2013-2014	Increase	2012-2013	2013-2014	Increase
Northeast Iowa	\$150.00	\$150.00	\$0.00	\$163.00	\$163.00	\$0.00
North Iowa Area	\$125.25	\$127.75	\$2.50	\$150.18	\$153.75	\$3.57
Iowa Lakes	\$146.00	\$149.00	\$3.00	\$163.58	\$166.58	\$3.00
Northwest Iowa	\$138.00	\$144.00	\$6.00	\$166.00	\$172.00	\$6.00
Iowa Central	\$132.00	\$137.00	\$5.00	\$146.00	\$151.00	\$5.00
Iowa Valley	\$144.00	\$148.00	\$4.00	\$170.00	\$174.00	\$4.00
Hawkeye	\$137.00	\$141.00	\$4.00	\$143.00	\$147.00	\$4.00
Eastern Iowa	\$131.20	\$134.00	\$2.80	\$131.20	\$134.00	\$2.80
Kirkwood	\$133.00	\$140.00	\$7.00	\$133.00	\$140.00	\$7.00
Des Moines Area	\$133.00	\$136.00	\$3.00	\$133.00	\$136.00	\$3.00
Western Iowa Tech	\$128.00	\$130.00	\$2.00	\$143.50	\$147.00	\$3.50
Iowa Western	\$129.00	\$132.00	\$3.00	\$142.00	\$146.00	\$4.00
Southwestern	\$136.00	\$142.00	\$6.00	\$148.00	\$154.00	\$6.00
Indian Hills	\$144.00	\$149.00	\$5.00	\$144.00	\$149.00	\$5.00
Southeastern	\$142.00	\$145.00	\$3.00	\$142.00	\$145.00	\$3.00
State Average	\$136.56	\$140.32	\$3.75	\$147.90	\$151.89	\$3.99
Standard Deviation	\$7.05	\$7.05	\$1.75	\$11.97	\$11.81	\$1.63

Source: 2012-2013 Academic Year, Iowa Community Colleges, Tuition and Fees Report, Issued September 2012; Electronic 2013-2014 tuition survey data submitted by Iowa Community Colleges and compiled by the Iowa Department of Education. Note: Indian Hills shown for three 12 week terms. Fee per credit hour calculated on two 12 credit terms.

Table 14 - Non-Resident Tuition Per Credit Hour: 2012-2014 Academic Years

	Tuition per Semester Hour			Annual with 24 Hours	Annual with 30 Hours	Percent Increase
	2012-2013	2013-2014	Increase			
Northeast Iowa	\$150.00	\$150.00	\$0.00	\$3,600.00	\$4,500.00	0.00%
North Iowa Area	\$187.90	\$191.63	\$3.73	\$4,599.12	\$5,748.90	1.99%
Iowa Lakes	\$148.00	\$160.00	\$12.00	\$3,840.00	\$4,800.00	8.11%
Northwest Iowa	\$154.00	\$160.00	\$6.00	\$3,840.00	\$4,800.00	3.90%
Iowa Central	\$198.00	\$205.50	\$7.50	\$4,932.00	\$6,165.00	3.79%
Iowa Valley *	\$165.00	\$169.00	\$4.00	\$4,056.00	\$5,070.00	2.42%
Hawkeye	\$162.00	\$166.00	\$4.00	\$3,984.00	\$4,980.00	2.47%
Eastern Iowa	\$196.80	\$201.00	\$4.20	\$4,824.00	\$6,030.00	2.13%
Kirkwood	\$158.00	\$170.00	\$12.00	\$4,080.00	\$5,100.00	7.59%
Des Moines Area	\$266.00	\$272.00	\$6.00	\$6,528.00	\$8,160.00	2.26%
Western Iowa Tech	\$133.00	\$133.00	\$0.00	\$3,192.00	\$3,990.00	0.00%
Iowa Western	\$134.00	\$137.00	\$3.00	\$3,288.00	\$4,110.00	2.24%
Southwestern	\$142.50	\$149.00	\$6.50	\$3,576.00	\$4,470.00	4.56%
Indian Hills	\$216.00	\$224.00	\$8.00	\$5,376.00	\$6,720.00	3.70%
Southeastern	\$147.00	\$150.00	\$3.00	\$3,600.00	\$4,500.00	2.04%
State Average	\$170.55	\$175.88	\$5.33	\$4,221.01	\$5,276.26	3.15%
Standard Deviation	\$35.09	\$35.97	\$3.45	\$863.27	\$1,079.09	2.22%

Source: 2012-2013 Academic Year, Iowa Community Colleges, Tuition and Fees Report, Issued September 2012; Electronic 2013-2014 tuition survey data submitted by Iowa Community Colleges and compiled by the Iowa Department of Education. Note: Indian Hills shown for three 12 week terms. * Iowa Valley number represents the average of the Ellsworth CC and the Marshalltown CC rates.

Table 15 - Recurring Fees for Full-Time Students: 2013-2014 Academic Year

	Amount	Term	Purpose	Annual - 12 credits per Term	Annual - 15 credits per Term
Northeast Iowa	\$13.00	Sem Hr.	General	\$312.00	\$390.00
North Iowa Area	\$4.00	Sem Hr.	Student Activity	\$96.00	\$120.00
	\$12.00	Sem Hr.	Materials/Lab/Supply	\$288.00	\$360.00
	\$10.00	Sem Hr.	Technology	\$240.00	\$300.00
				\$624.00	\$780.00
Iowa Lakes	\$0.75	Sem Hr.	Processing	\$18.00	\$22.50
	\$0.25	Sem Hr.	Noel Levitz LSA Fee	\$6.00	\$7.50
	\$2.25	Sem Hr.	Activity	\$54.00	\$67.50
	\$5.50	Sem Hr.	General	\$132.00	\$165.00
	\$8.00	Sem Hr.	Technology	\$192.00	\$240.00
	\$10.00	Semester	Activity (students registered for 12 or more hours)	\$20.00	\$20.00
				\$422.00	\$522.50
Northwest Iowa	\$10.00	Sem Hr.	Student Fee	\$240.00	\$300.00
	\$10.00	Sem Hr.	Course Fee	\$240.00	\$300.00
	\$8.00	Sem Hr.	Technology Fee	\$192.00	\$240.00
				\$672.00	\$840.00
Iowa Central	\$14.00	Sem Hr.	Student Fee	\$336.00	\$420.00
Iowa Valley	\$17.00	Sem Hr.	Materials & Technology Fee	\$408.00	\$510.00
	\$2.00	Sem Hr.	Facility Fee	\$48.00	\$60.00
	\$7.00	Sem Hr.	Student/Distance Learning/Facility Fee	\$168.00	\$210.00
				\$624.00	\$780.00
Hawkeye	\$4.00	Sem Hr.	Computer user	\$96.00	\$120.00
	\$2.00	Sem Hr.	Activity	\$48.00	\$60.00
				\$144.00	\$180.00
Eastern Iowa	None				
Kirkwood	None				
Des Moines Area	None				
Western Iowa Tech	\$9.00	Credit Hr.	Technology	\$216.00	\$270.00
	\$8.00	Credit Hr.	Matriculation	\$192.00	\$240.00
				\$408.00	\$510.00
Iowa Western	\$14.00	Sem Hr.	Student Activity Fee	\$336.00	\$420.00
Southwestern	\$12.00	Sem Hr.	Service/Technology	\$288.00	\$360.00
Indian Hills	None				
Southeastern	None				

Source: 2012-2013 Academic Year, Iowa Community Colleges, Tuition and Fees Report, Issued September 2012; Electronic 2013-2014 tuition survey data submitted by Iowa Community Colleges and compiled by the Iowa Department of Education. Note: This is not an all inclusive listing of fees charged by the individual community colleges. The fees listed above include all fees charged to each student. Other fees such as lab fees or special class fees may be charged by the individual community college.



COMMUNITY COLLEGES
www.educateiowa.gov/ccpublications/