



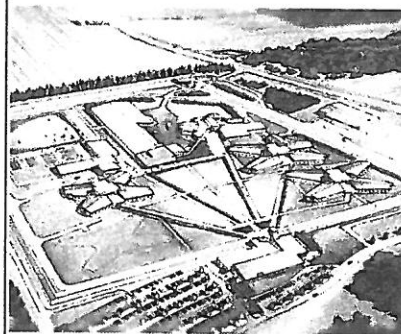
Iowa State Penitentiary

The IDOC mission **"To advance successful offender reentry to protect the public, staff and offenders from victimization"** was the top priority throughout the planning and design process. As the IDOC's maximum security facility it was imperative that the appropriate security measures and technological advances were implemented to ensure efficiency in operations and fulfill our obligation to the taxpayers of Iowa.

A Quick Look...

- Site is 90 acres with 45 acres inside the secure perimeter
- Housing Unit 1 is approximately 73,660 sq. ft. and consists of 232 single cells.
- Housing Unit 2 is approximately 69,563 sq. ft. and consists of 224 single cells.
- Housing Unit 3 is approximately 55,550 sq. ft. and consists of 256 beds - double bunked.
- Medical and Mental Health Unit is approximately 48,575 sq. ft. and consists of 24 mental health beds and 30 medical beds.
- There are three towers: Tower 1 is located atop the Administration building covering the southern perimeter of the facility. Tower two is located on the west side of the perimeter. Tower 3 is located on the northeast perimeter.
- Each building has its own geothermal wells and flow control for water usage, furthering green government initiatives.
- The program building will provide classroom space for religious, education and treatment programming to assist with reentry efforts. Additionally space will be provided for indoor and outdoor recreation.
- There will be two sides to the Dining Hall to assist with security and movement concerns.
- IPI will continue to provide meaningful employment to the offender population.
- The facility will have over 350 security cameras for staff and offender safety.
- Through the use of PDA devices, the increase in staff mobility will promote Direct Supervision concepts that have been proven to reduce violence, increase staff safety and enhance interaction between staff and offenders.

New Prison



2111 330th Avenue
Fort Madison, IA 52627

"By utilizing American Correctional Association (ACA) best practices during the design and planning phases, the new institution will become an integral part of the reentry process for the Iowa Department of Corrections. Our focus will be on offender behavior management and encouraging movement to lower custody levels where they will receive the necessary treatment to safely reenter our communities."

Warden Nick Ludwick



Iowa State Penitentiary

The existing facility began its operations in 1839 as the first territorial prison. The oldest operating prison west of the Mississippi. The facility houses upwards of 580 maximum security offenders inside its limestone walls.

Population Snapshot—Maximum Security

- 592 offenders currently housed inside the walls
- 289 Offenders serving a life sentence
- 168 Offenders serving sentences of more than 20 years
- 461 offenders serving sentences for violent offenses
- 169 offenders have mandatory minimum sentences they must serve before they are eligible for parole.

Population Snapshot—Clinical Care Unit

- 198 offenders receiving mental health services

Population Snapshot—John Bennett Unit

- 176 Minimum Security Offenders working in the community and receiving Substance Abuse Treatment

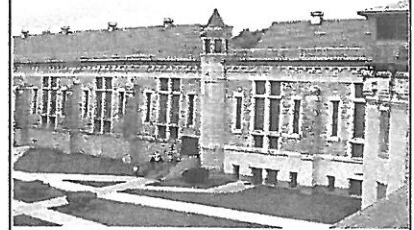
A Day in the Life

Offenders housed at the maximum security unit are afforded the opportunity to obtain higher privilege levels based on their behavior. The ability to follow staff directives, attend programming (if required) and work on a job assignment may earn offenders extra out of cell time.

By providing offenders with meaningful recreation and work assignments we can teach them positive pro-social behavior in which to occupy their time. For the offenders paroled, this translates into a more successful reentry candidate as well as providing a safer environment for staff and other offenders.

The majority of the job-eligible offenders are assigned an institutional job. General population offenders are also afforded approximately two hours of recreation time per day. In addition, offenders attend meal service three times a day and some participate in self help groups such as Alcoholic Anonymous or religious programs.

Existing Facility



3 John Bennett
Fort Madison, IA 52627

"Our offender population is aging and the need to provide end of life care necessitated the development of the Hospice Program currently in operation. The program is a national model for corrections with offenders providing end of life care to each other."

Warden Nick Ludwick