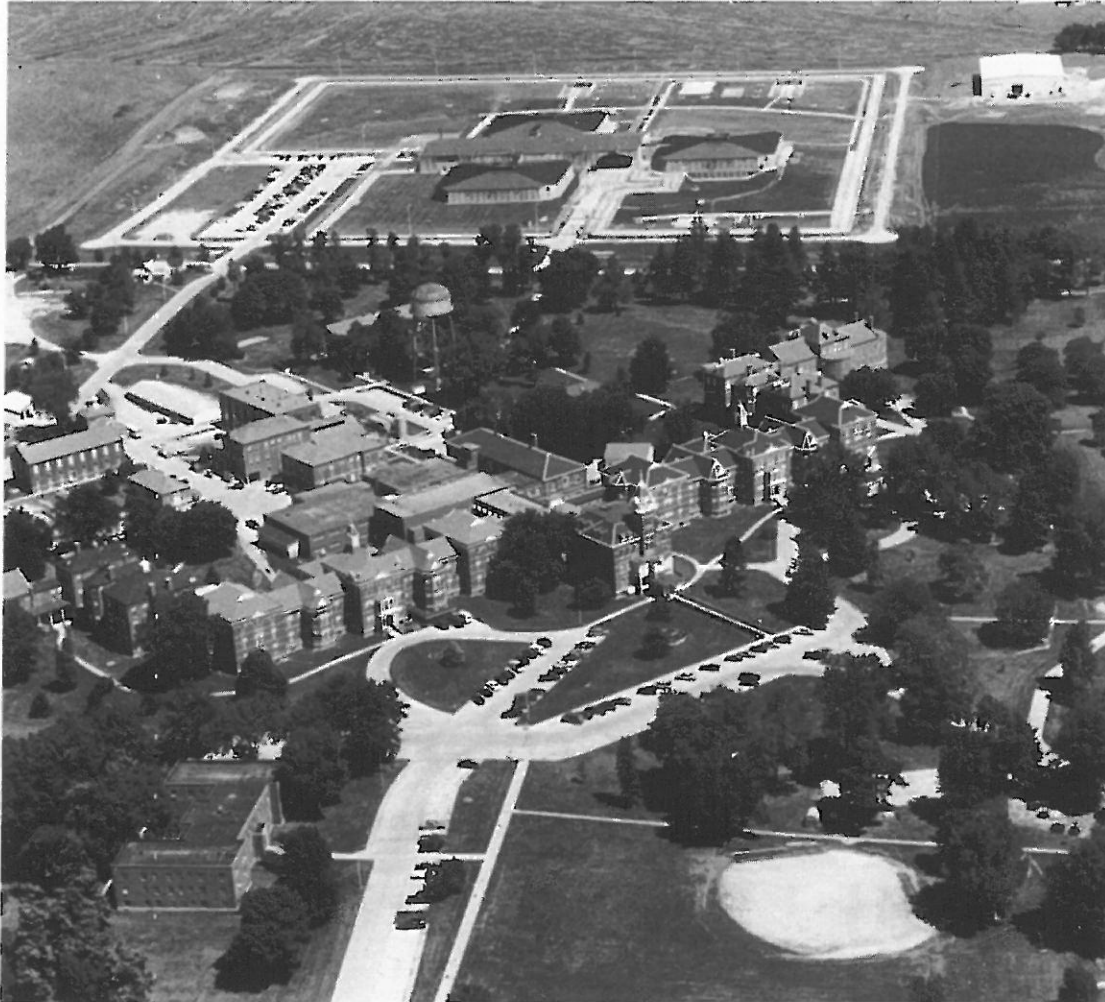


Iowa Department of Human Services



CLARINDA TREATMENT COMPLEX (CTC)

composed of

Clarinda Mental Health Institute (MHI)

1800 North 16th Street

Clarinda, Iowa 51632

712-542-2161

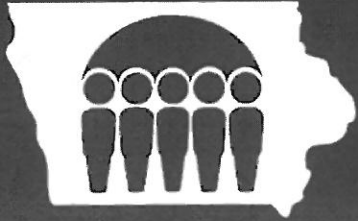
Clarinda Correctional Facility (CCF)

2000 North 16th Street

Clarinda, Iowa 51632

712-542-5634





Iowa Department of Human Services

Clarinda Mental Health Institute

– a 35 bed multi-disciplinary treatment center for ages 18 and older

Clarinda Correctional Facility

– medium and minimum security prison facilities

Clarinda Academy

– private youth program for ages 14-18

Zion Recovery Services

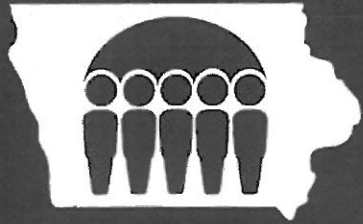
– six county adult male substance abuse in-patient program

Waubonsie Mental Health Center

– three county out-patient mental health center

H&H

– private manufacturing facility



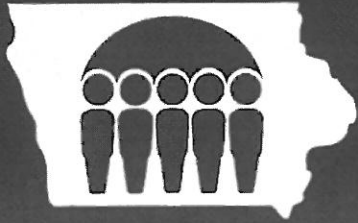
Iowa Department of Human Services



February 8, 2011 – Washington, D.C.

- **The Clarinda Mental Health Institute Geropsychiatric Nursing Facility received the highest ranking of five star rated Iowa nursing homes.**
- **The facility ranked #1 out of the 76 five star rated nursing homes in Iowa.**
- **Clarinda was the only nursing home in Iowa to receive a perfect score of 15 stars.**





Iowa Department of Human Services

**Iowa DHS CAMPUS PROGRAMS
Mental Health Institute**



**MENTAL HEALTH
INSTITUTE**

**(15 Acute Psychiatric beds,
20 Geriatric Psychiatric beds)**



Iowa Department of Human Services

Iowa Department of Corrections

CLARINDA CORRECTIONAL FACILITY (750 Bed Design)

CAMPUS PROGRAMS

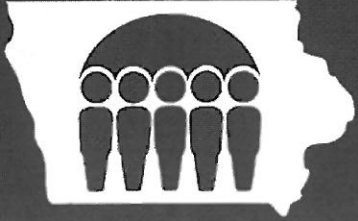


PRISON INDUSTRIES

H & H

CCF LODGE

Minimum Security (225 bed capacity)



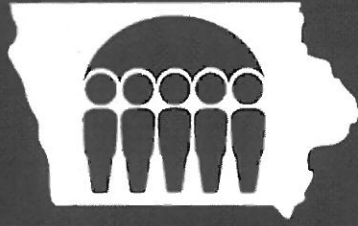
Iowa Department of Human Services

CAMPUS PROGRAMS Other Residential Programs

CLARINDA ACADEMY (267 beds)

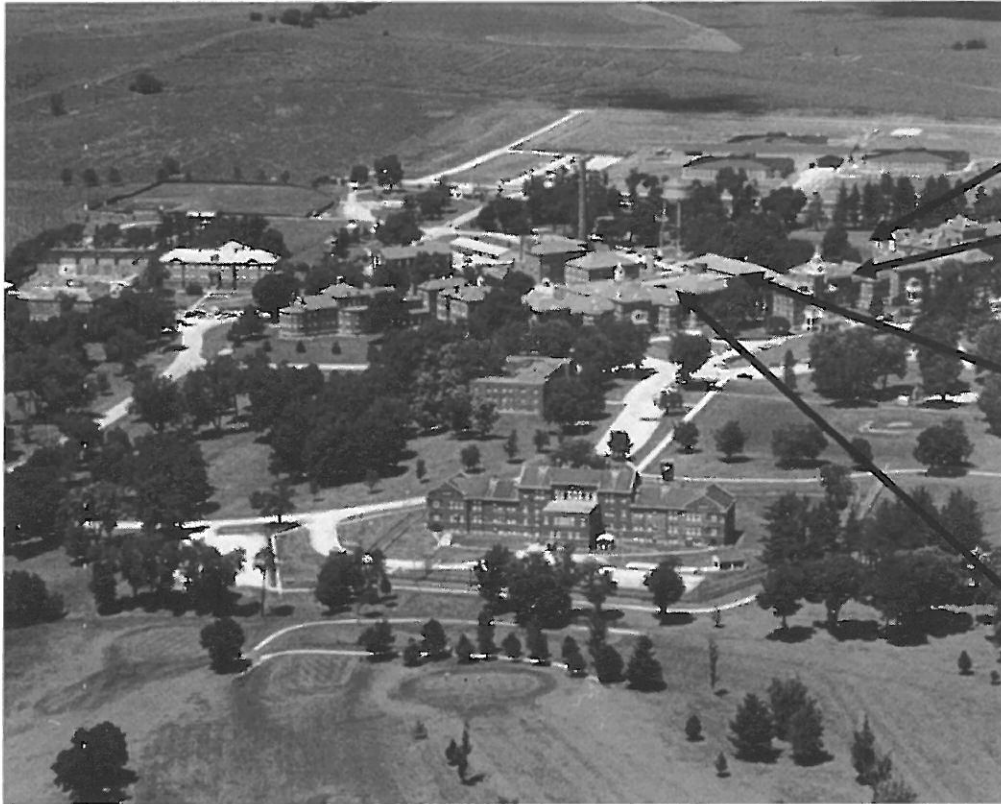


**ZION RECOVERY
SERVICES (15 beds)**



Iowa Department of Human Services

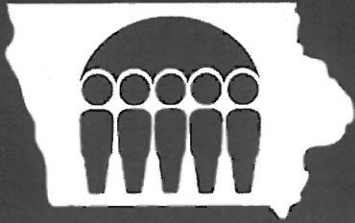
CAMPUS PROGRAMS Leased Offices



**WAUBONSIE MENTAL
HEALTH CENTER**

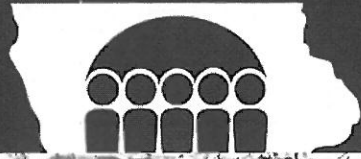
**VOCATIONAL
REHABILITATION**

**CLARINDA AREA
VOLUNTEER**



Iowa Department of Human Services

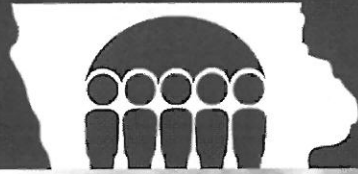




Iowa Department of Human Services

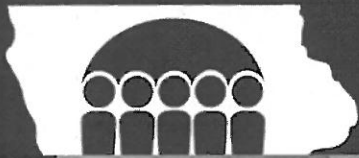
→ WAUBONSIE MENTAL HEALTH CENTER
→ CLARINDA ACADEMY SHELTER
↑ MHI ADMINISTRATION
← MHI ADMISSIONS
← RECEIVING
← CLARINDA ACADEMY
← PINE COTTAGE

→ ZION RECOVERY SERVICES



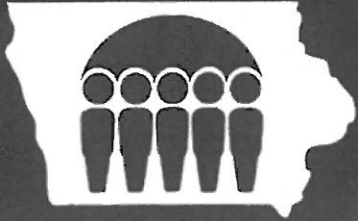
Iowa Department of Human Services





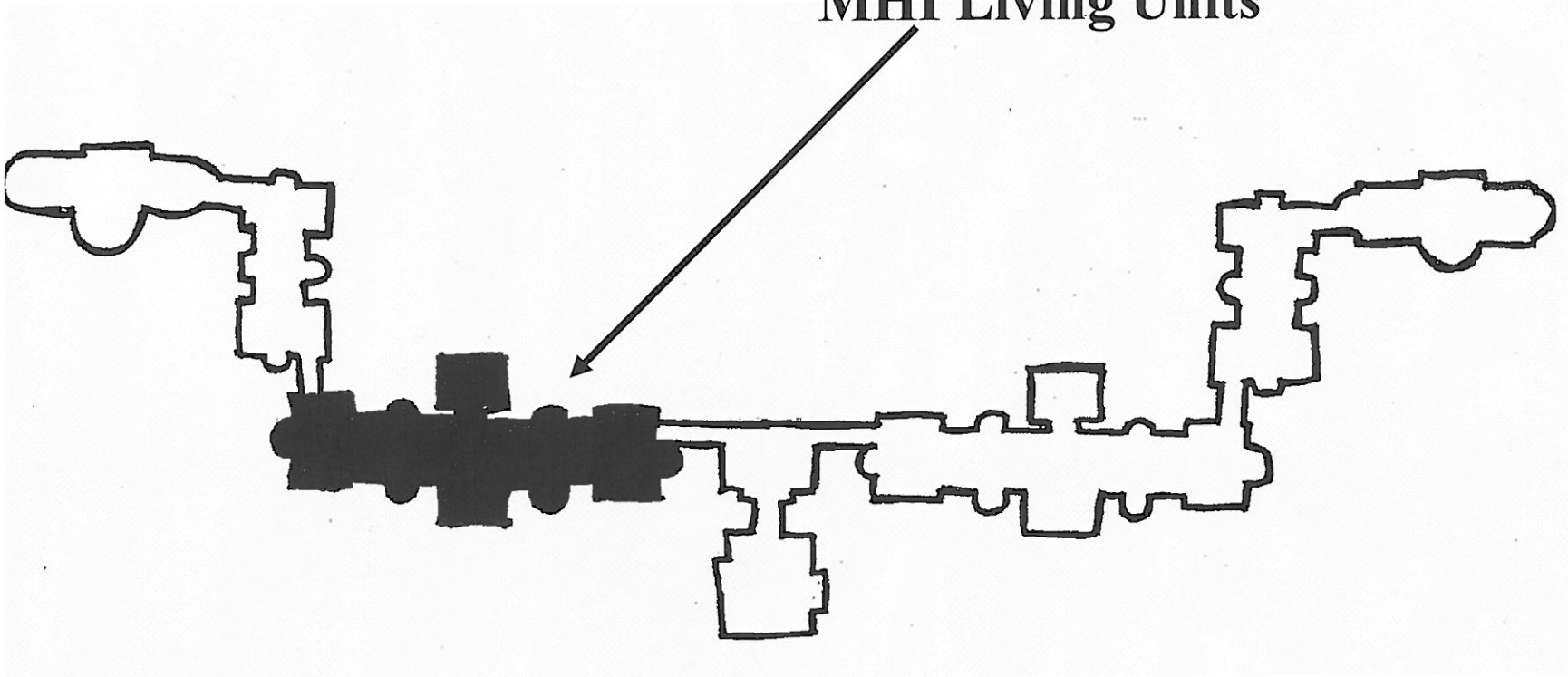
Iowa Department of Human Services

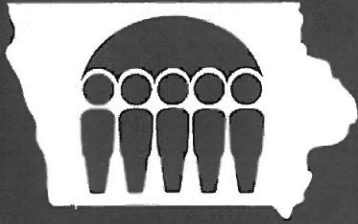




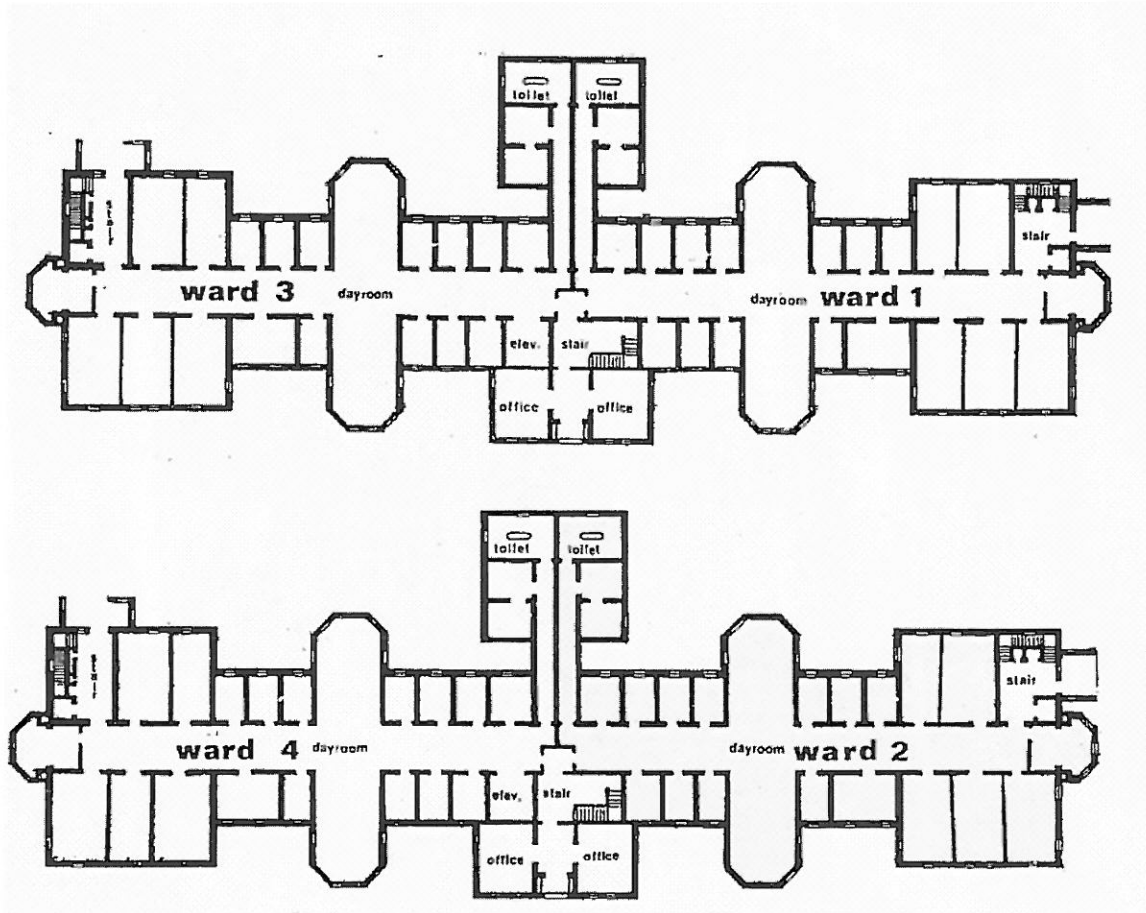
Iowa Department of Human Services

MHI Living Units

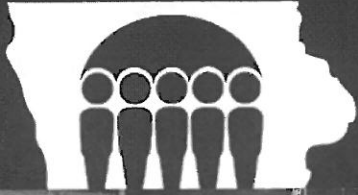




Iowa Department of Human Services

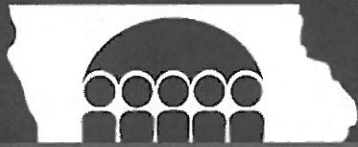


Ward 2 (SW2)
is vacant



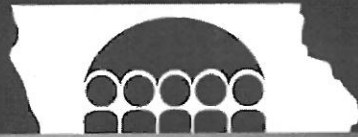
Iowa Department of Human Services





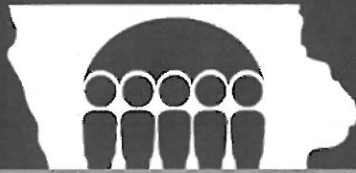
Iowa Department of Human Services





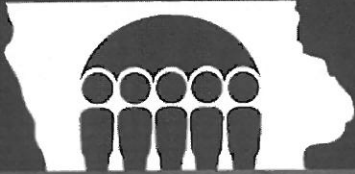
Iowa Department of Human Services





Iowa Department of Human Services





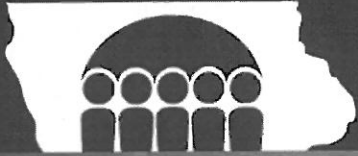
Iowa Department of Human Services





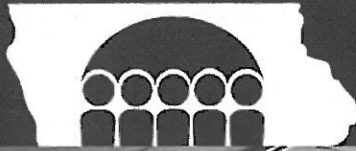
Iowa Department of Human Services





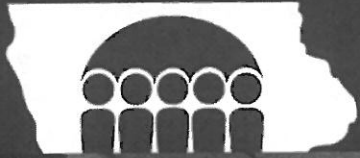
Iowa Department of Human Services





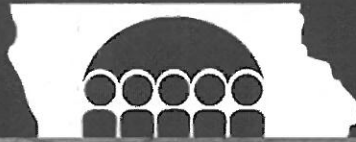
Iowa Department of Human Services





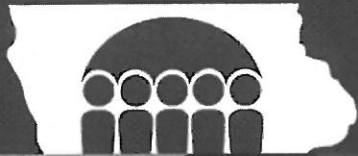
Iowa Department of Human Services





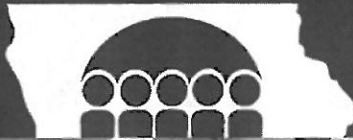
Iowa Department of Human Services





Iowa Department of Human Services

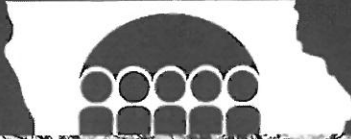




Iowa Department of Human Services



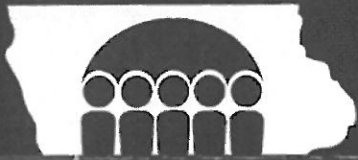
Activities - Gym



Iowa Department of Human Services



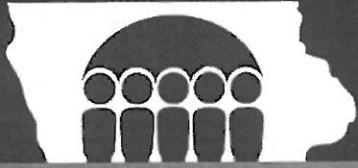
Geriatric Park



Iowa Department of Human Services



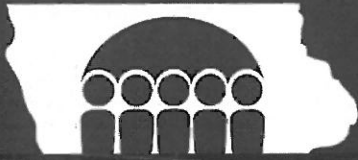
Geriatric Park



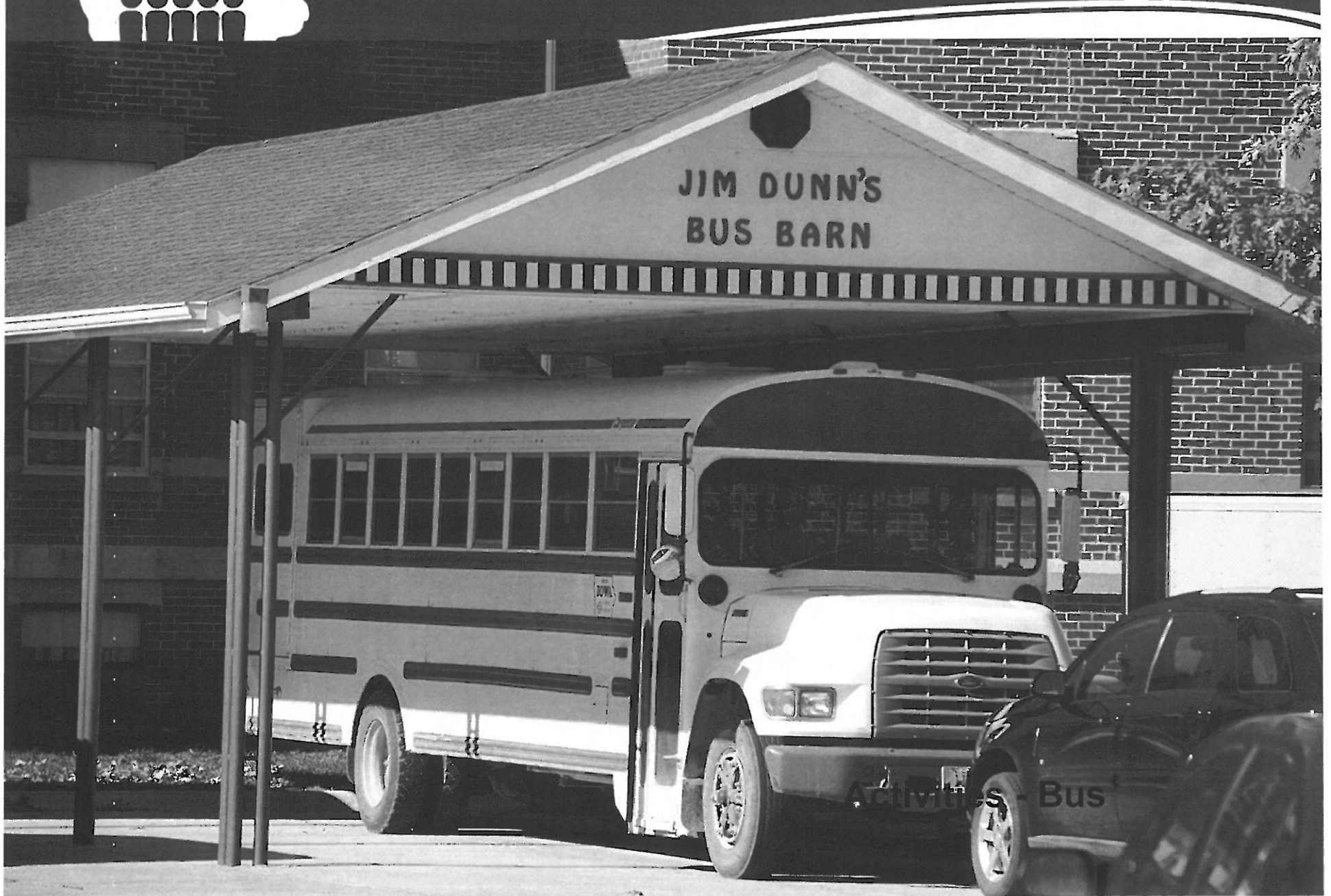
Iowa Department of Human Services



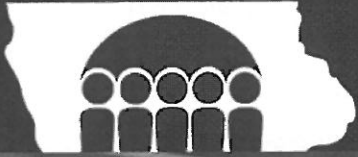
Geriatric Park



Iowa Department of Human Services



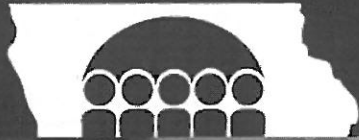
Activities - Bus



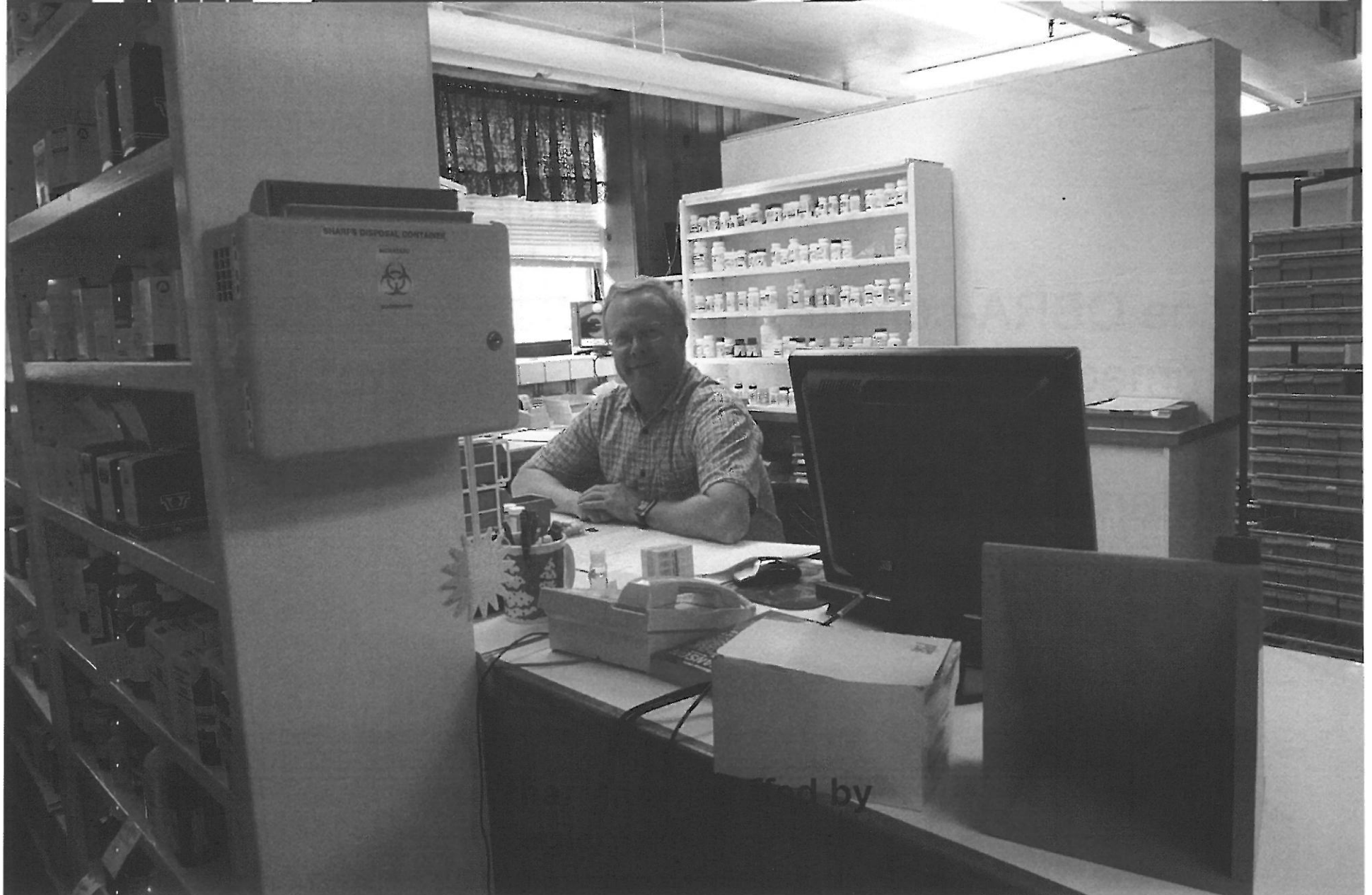
Iowa Department of Human Services

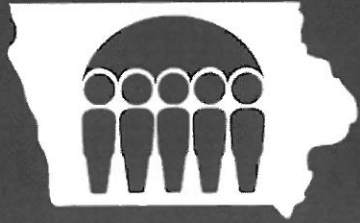


Laboratory, staffed
by Medical
Technicist



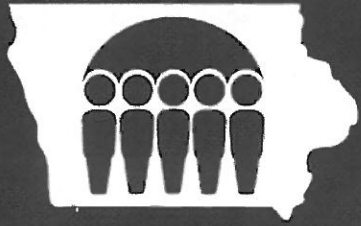
Iowa Department of Human Services





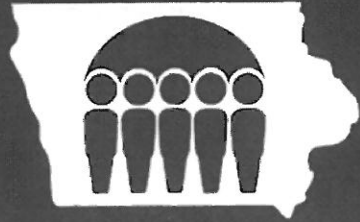
Space Available

- one OBRA-compliant living unit is available for immediate occupancy
- another living unit is available, but would require extensive renovation



Shared Staff / Infrastructure

- Business Office/Administration
- Plant Operations
- Dietary/Storeroom
- Laundry/Housekeeping
- Pharmacy/Lab/Medical Staff
- Activities Spaces – indoor and outdoor



Campus Wide Services

- ADA compliant campus
- Self-operated water system
- Central heating/cooling plant
- Backup power generation