



10 YEARS OF SUCCESS



Pacific Battleship Center, 501c3 non-profit

2012 **Battleship IOWA Museum Opens**

Prominent tourist attraction at the Port of Los Angeles in large part due to \$3M investment from Iowa.

2014 **STEM Education Programs Launch**

Serving approximately 20,000 youth annually.

2016 **LA Fleet Week, Community Resiliency, and Hull Preservation**

Change agents for integrating military and community, leading disaster response planning, and setting the industry standard for hull preservation techniques due to \$500K investment from Iowa.

2019 **Veterans Programs Launch**

Programs serve over 25,000 military, veterans, and their families annually.

Navy-Licensed National Museum of the Surface Navy (NMSN)

Extremely unique museum agreement.

2021 **Congressionally designated as NMSN**

Distinctive classification of museum.

Today **Essential Community Asset**

Welcomed over 2.5 million visitors to date, including over 50,000 Iowans at no cost. Top-5 attraction. #2 ship museum. Community platform and resource.



LONGEVITY: THE NEXT 50 YEARS

National Museum of the Surface Navy – greater impact and reach

- **Iconic USS IOWA**
 - Representing thousands of ships and millions of sailors
- **Self-sustainability**
 - Diverse revenue sources and endowments
- **Build and expand nationally**
 - Education, Veterans, and Community resiliency programs
 - Public Engagement for the next generation
 - Military public awareness activities
- **Innovative, effective, and efficient maintenance of artifact #1: USS IOWA**
 - Routine, year-round hull preservation
 - Public Engagement for the next generation
 - Military public awareness activities



NATIONAL MUSEUM OF THE SURFACE NAVY



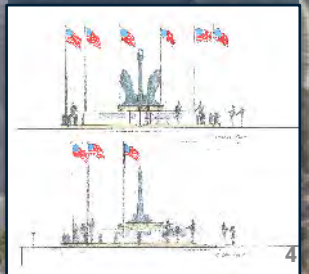
Welcome, Community, and Conference Center

Museum Entry

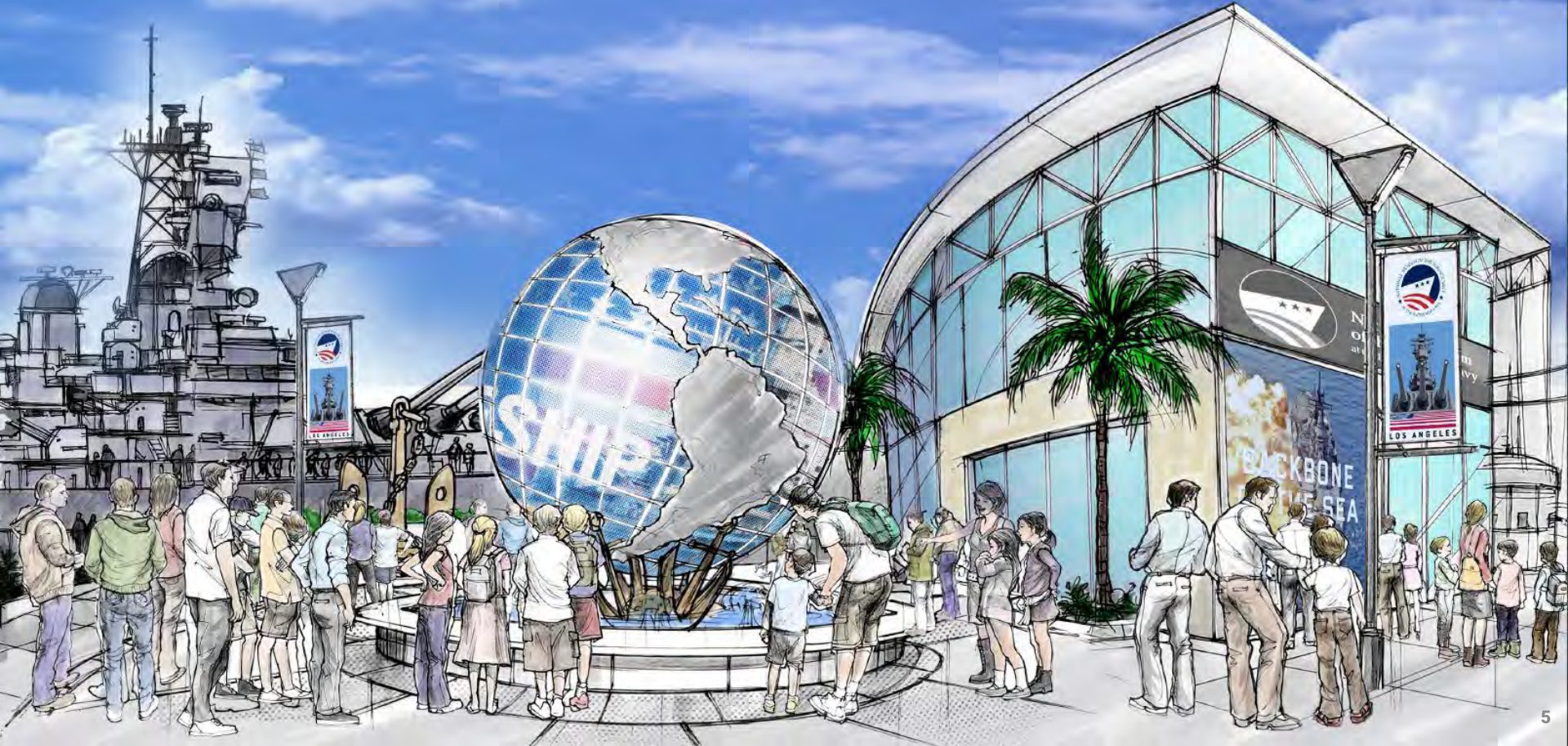
Freedom of the Seas Park and Pavilion

San Pedro Veterans Memorial

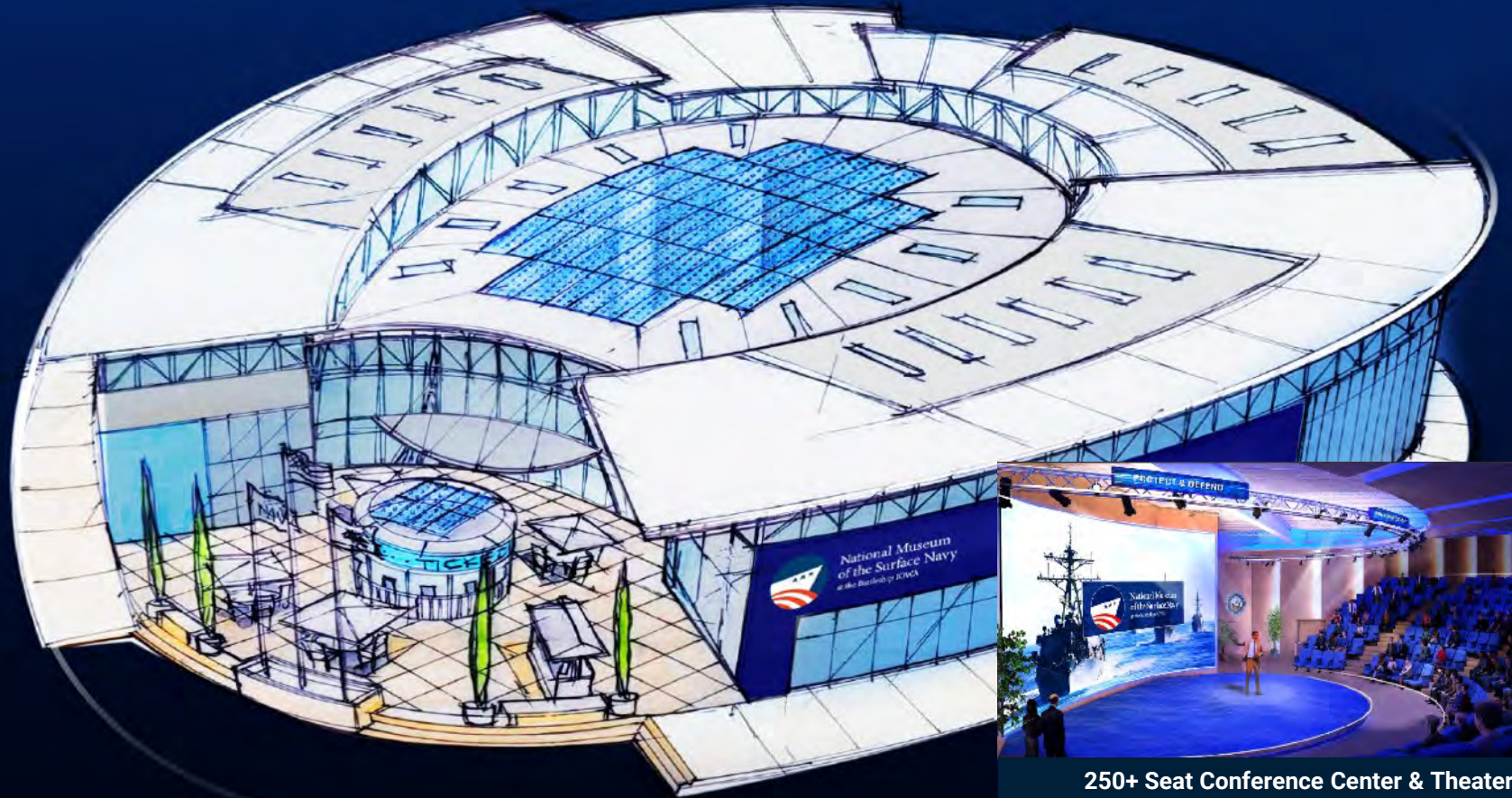
Concepts and designs presented by Applied Minds, led by Bran Ferren.



SHORESIDE WELCOME CENTER & TICKET KIOSK

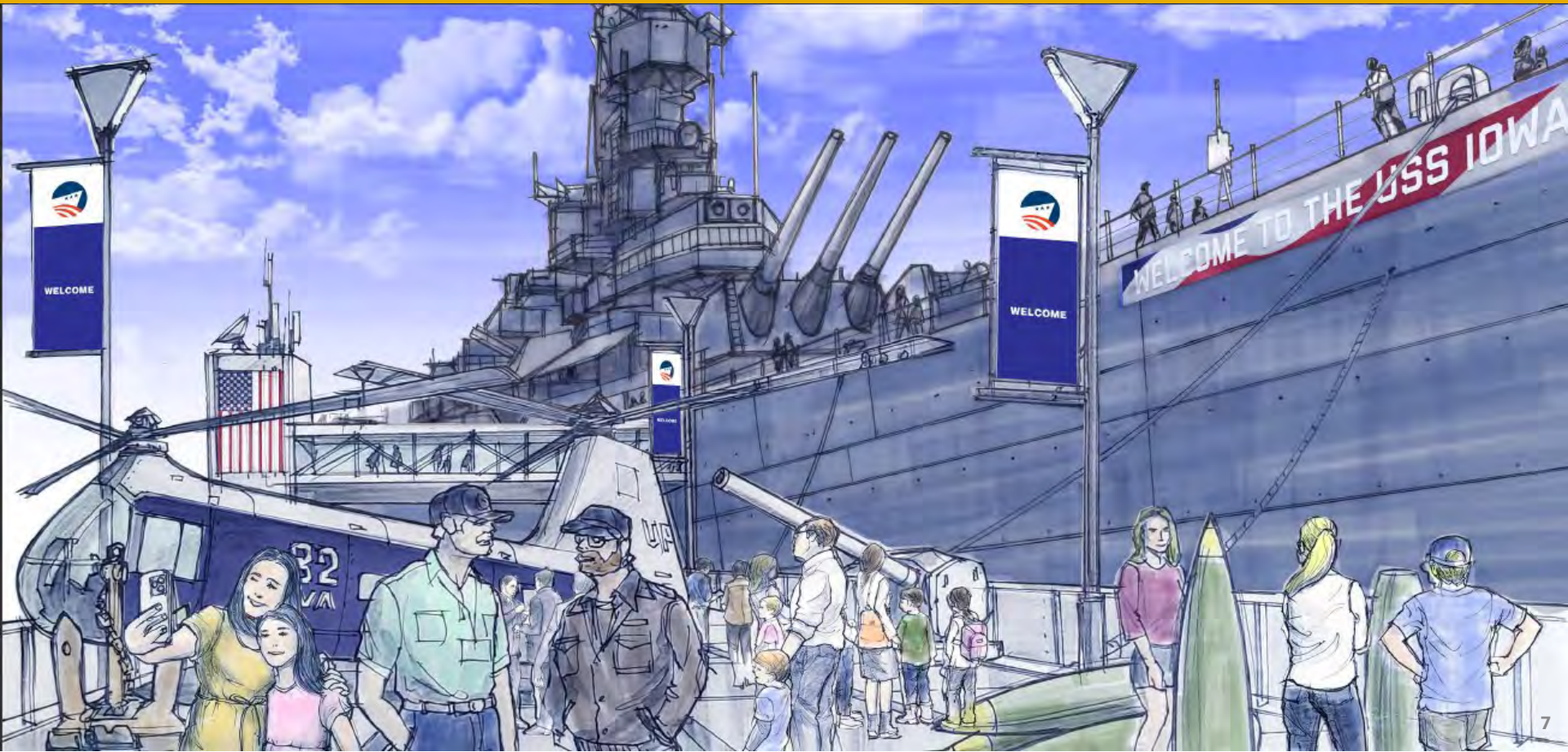


WELCOME CENTER & COMMUNITY MULTI-USE FACILITY

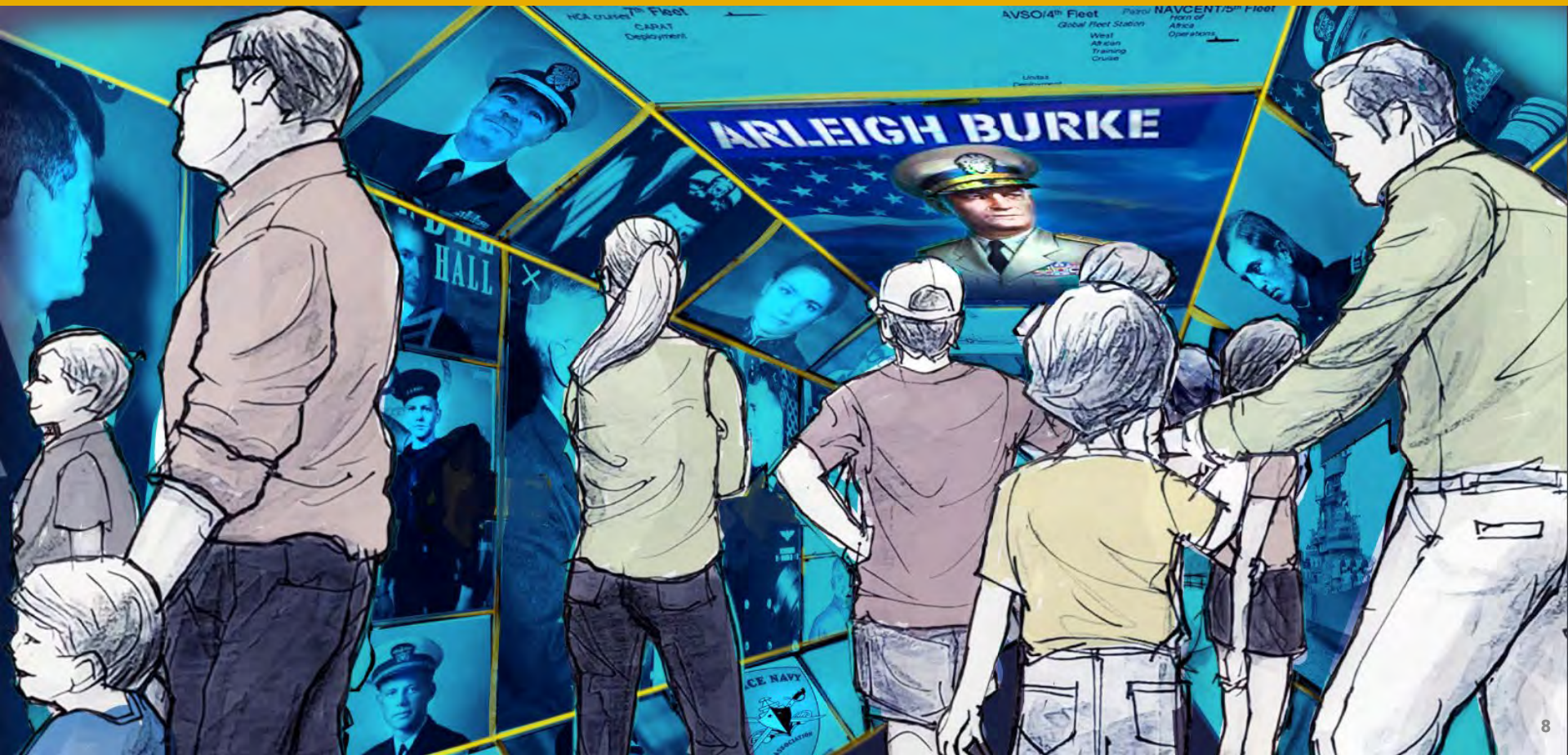


250+ Seat Conference Center & Theater

TRANSITION TO MUSEUM ENTRY



IMMERSIVE SURFACE NAVY HIGHLIGHT ENTRY TUNNEL



ENTRY PORTAL: HISTORY, TODAY, AND TOMORROW



National Museum
of the Surface Navy
at the Battleship IOWA

MUSEUM ORGANIZING PRINCIPLES

OUR HISTORY

Curated history of the life, influence, and accomplishments of America's Surface Navy, veterans, and the USS *IOWA*

Faces of the Navy

- Diversity, Culture, and Trailblazers
- Roles, Duties, Voyages, Risks, and Sacrifices
- Hall of Fame

Major Conflicts and Influence

- Major Roles in Tactical Combat
- Major Roles in Humanitarian Support
- Piracy: 1797-Present

Emergence of Superiority

- The Fleet: 1775-Present
- Shaping Borders and Waterways
- The History of Strategic Deterrence and Force

TODAY

Detailing the daily duties, contributions, and readiness of the modern Surface Navy

Global Diplomacy and Protecting the Seas

- Protecting Trade, Internet, and Waterways
- Fighting Piracy, Drug Trafficking, and Human Trafficking
- Diplomacy and International Joint Readiness

Humanitarian Missions

- Disaster Relief and Rescue at Sea
- Refugee and Hands-on Diplomacy
- World-Wide Emergency Medical Support

National Global Defense

- Global Security, Intelligence, and First Line of Defense
- Adapting for Climate Change
- The Fleet, Strategic Presence, and Deterrence

TOMORROW

Showcasing the future of the Fleet, technologies, and the emerging global challenges of the Surface Navy

Future Challenges and Readiness

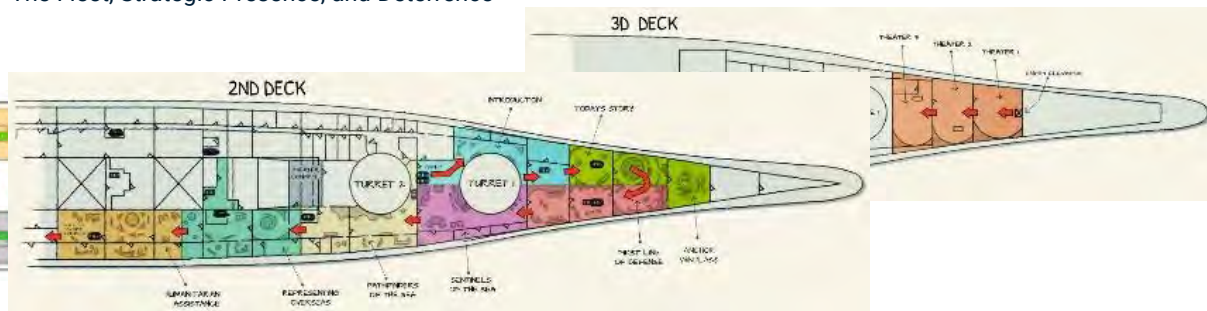
- Surface Situational Awareness
- Emerging Conflicts and Threats
- Diplomacy and International Joint Readiness

The Future of the Fleet

- Disaster Relief and Rescue at Sea
- Refugee and Hands-on Diplomacy
- World-Wide Emergency Medical Support

Technology and Innovation

- Global Security, Intelligence, and First Line of Defense
- Adapting for Climate Change
- Research and Development



The museum will use digital, physical and emotional interactions for guests in a departure from traditional linear storytelling to create a deeper, richer experience.

EDUCATIONAL INTERACTIVES & GAMES



PIRATES REPORTED NEARBY!

DEFEND!

SELECT OPTION

WARNINGS INTERCEPT ATTACK

RESOURCES _____
DAMAGE _____
LIVES SAVED _____

FREEDOM OF THE SEAS

NO ACTION
JOINT TRAINING EXERCISE
REQUEST ACTION

FREEDOM OF THE SEAS SCENARIO A

DISRUPT NEW BUILD UP (SELECTED) 30% PROGRESS

NO ACTION

JOINT TRAINING EXERCISE

SEND SHOW-OF-FORCE

REQUEST ACTION

MULTI-DIMENSIONAL GALLERIES



SHOWCASING THE FUTURE



ANCHOR POINTS ABOARD IOWA



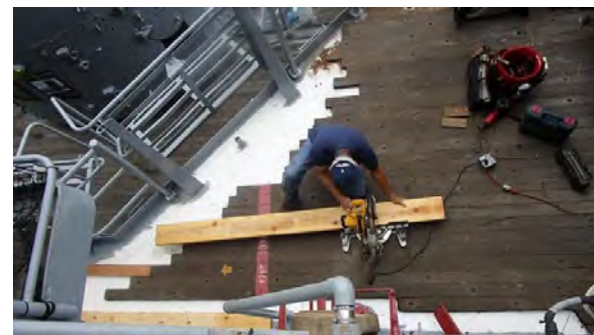
BECOMING NATIONAL

Funding Update

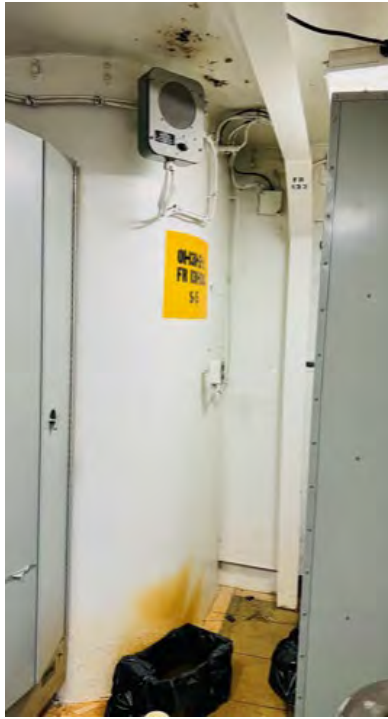
- \$11.5M raised to date, including \$6.8M from State of CA
- \$40M under consideration, including \$21M from the Port of Los Angeles for relocation to new West Harbor development
- \$9.3M spent to date including infrastructure, design, and space preparation

Home to the Museum: USS IOWA

- Specific ship needs primarily supported by those who served aboard IOWA and State of Iowa natives and residents
- Hull preservation is sufficiently supported, receiving approx. \$150K in private donations annually
- Deck replacement campaigns struggle to find success, raising under \$100K total since 2016. One volunteer crew member works on deck repairs



IOWA'S DECKS: WE NEED YOUR HELP



Accelerated Corrosion

- Significant portions of teak were replaced with Douglas fir in the 1980s and has deteriorated significantly
- Corrosion is accelerating following California storms in early 2023

Threatened Structural Integrity

- Decayed wood deck and sitting water result in the underlying steel substrate failing
- Severe leaks cause gallons of water to penetrate the interior of the ship during rainstorms
- Areas of non-armored mild steel in historical areas, such as on the Commander-in-Chief's Veranda, risk of major replacement



IOWA'S DECKS: WE NEED YOUR HELP



IOWA'S DECKS: LONG-TERM SOLUTION



Wood: Inaccessible, Expensive, and Unsustainable

- Teak is extremely expensive and nearly inaccessible – Myanmar is home to primary suppliers
- Douglas fir has a short lifespan and caulking in joints needs to be replaced within 10 years

Composite: Effective and Sustainable

- Composite decking is the most cost-effective and sustainable solution for the long-term (50+ years)
- Utilized on cruise ships and yachts as a teak alternative
- The material is being installed on the Battleship IOWA bridge as a test prior to more widespread use



IOWA'S SUPPORT

We graciously request **\$3,500,000** from the State of Iowa to support the critical need of replacing the decks of USS *IOWA* to preserve her for future generations.

Deck Project	Expected Cost
Materials	\$3,910,113
Digital Mapping : Contractor-performed work	\$434,457
Installation: Contractor-performed work	\$2,155,430
Total	\$6,500,000
Estimated Timeline: 3 Years	





Jonathan Williams, President & CEO

jwilliams@surfacenavymuseum.org | 877.446.9261 x 709

Education | Veterans | Community

pacificbattleship.com | surfacenavymuseum.org