

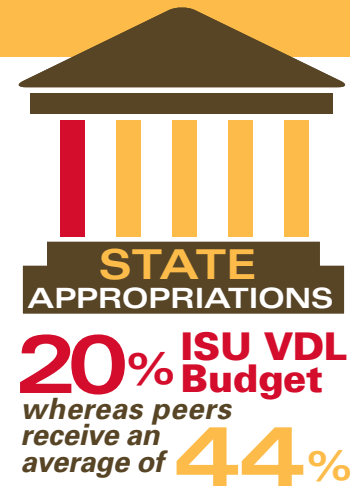
IOWA STATE UNIVERSITY

Veterinary Diagnostic Laboratory

The Iowa State University Veterinary Diagnostic Laboratory (ISU VDL) serves to protect animal and human health while advancing Iowa's \$32.5 billion animal agriculture economy.

\$4.4M *Currently the ISU VDL receives an annual \$4.4 million appropriation, approximately 20% of the overall budget for the lab.*

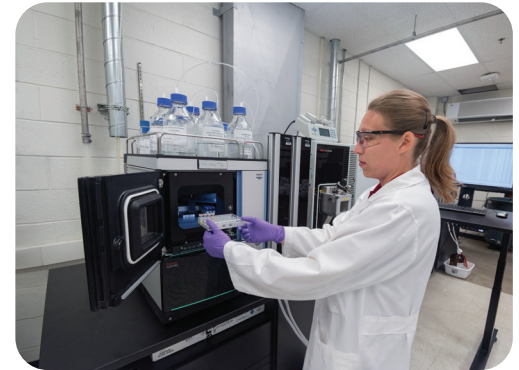
- Compared to peer labs, **the percentage of budget the ISU VDL derives from fees** charged to clients is among the highest in the nation.
 - > ISU VDL receives 20% of its budget from state appropriations.
 - > 85% of all state VDLs receive in excess of 20%.
 - > Average funding level is 44% of budget.
 - > 8 labs receive more than 60%.
- Baseline funding is critical to sustain a level of preparedness.
 - > To respond to disease outbreaks such as Avian Influenza, African Swine Fever, and Foot and Mouth Disease.
 - > To recruit and retain the quality and level of staffing for appropriate response.
 - > To keep tests affordable and encourage routine testing. Increased utilization of the lab facilitates early detection of disease and decreased "spillover" to neighbors.
- A recently published study estimated that \$31.79 million in state taxes are generated from the lab in normal years and \$124.15 million in state taxes are generated in times of an animal health emergency. This equates to a 8:1 return on investment during normal years and a 31:1 return on investment during times of an animal health emergency. vetmed.iastate.edu/article/economic-contribution-isu-vdl



REQUEST: *Increase appropriations to meet increased costs of operations.*

The \$4.4 million direct appropriation through Agriculture and Natural Resources allows the VDL to:

- Continue to provide unbiased, critical diagnostic services to meet the needs of Iowa animal owners and the public.
- Position Iowa to continue to participate in national animal health networks and surveillance programs for important diseases.
- Serve as 1 of 19 Level 1 labs in the U.S. National Animal Health Laboratory Network.
- Detect and capably respond to the introduction of transboundary (porcine epidemic diarrhea virus 2013-14), foreign animal diseases (highly pathogenic avian influenza virus 2015, 2022-3), and emerging diseases of animals (Senecavirus A 2015-16, CWD 2019) and humans (COVID-19).
- Provide the research infrastructure to be the nation's leader in food-animal diagnostic medicine.
- Preserve and continue to grow Iowa's access to export markets: ~27% of U.S. pork, ~11% of U.S. beef, ~19% of U.S. chicken is exported.



IMPACT: A 1% increase (or decrease) in Iowa's \$32.5 billion animal agriculture economy = \$325 million impact on Iowa

vetmed.iastate.edu/vdl