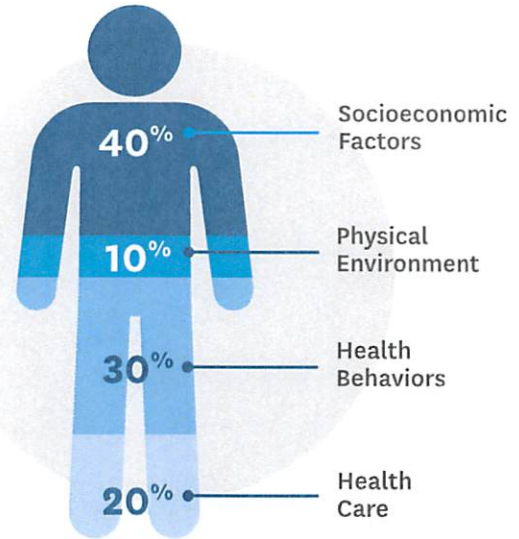


Investing in Our Communities & Social Determinants of Health (SDoH)

Helping Iowans live healthier lives.

Social determinants have a major impact on health outcomes, especially for the most vulnerable. Iowa Total Care (ITC) has approximately **800 locally based employees** who are committed to helping people live healthier lives. We understand the impact SDoH has on our members. Through innovation, data collection, and analytics, ITC works to identify and remove barriers to improve health outcomes. We also partner with **250 community organizations** that support our mission.



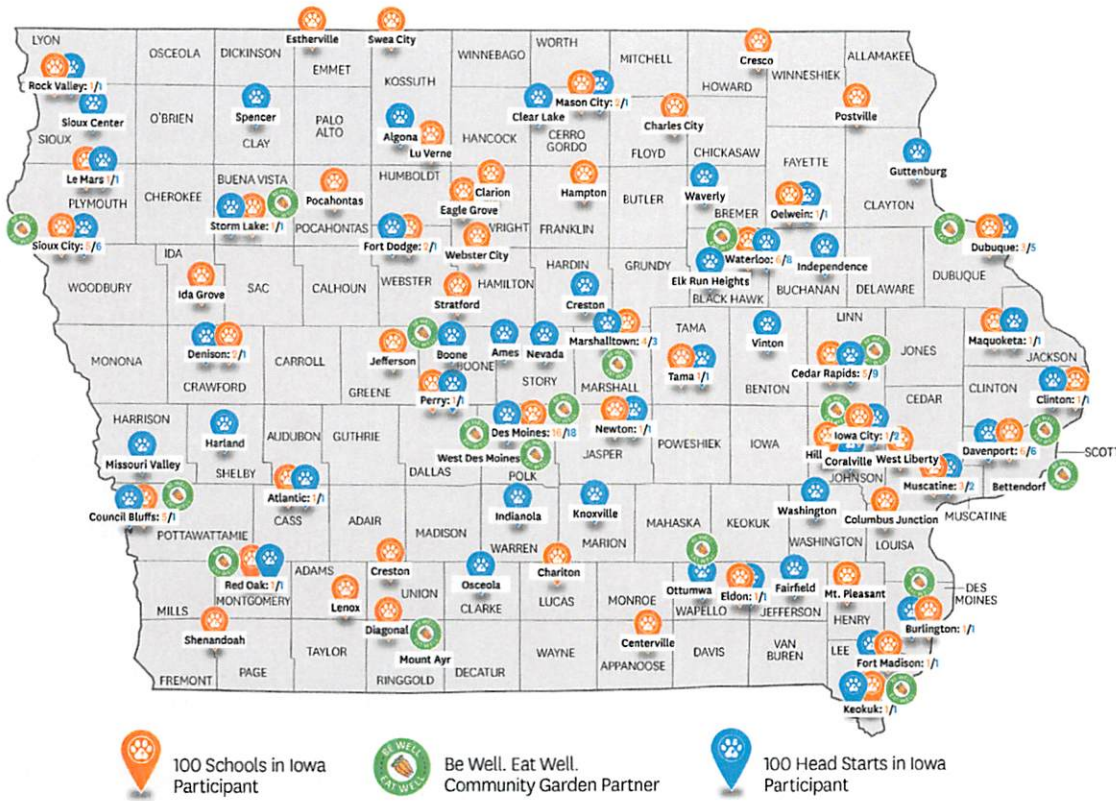
2022 Community Investment



*Investment since 2019 is \$1,195,871

**Organizations shown are select examples only; not an all-inclusive list.

Supporting Iowans



An umbrella food insecurity program.


- Sponsor 55 community gardens statewide, providing greater access to fresh produce.
- Numerous statewide partnerships and sponsorships with food banks and food pantries.




Promotes early childhood literacy through educational resources and statewide partnerships.

- Support literacy in 200 schools throughout Iowa. This included 100 elementary schools with large free and reduced-price lunch student populations, and 100 Head Starts.
- Financial support to Broadlawns Reach Out and Read and Raising Readers programs.

 100 Schools in Iowa Participant

 Be Well. Eat Well. Community Garden Partner

 100 Head Starts in Iowa Participant



Helping Members Access Resources

- **1,500+** members assisted with housing needs.
- Connecting and referring members (e.g. findhelp.org & 211).



Promoting Healthy Behaviors

≈**200,000** rewards earned by members through My Health Pays® Rewards program. Rewards used for food, rent, clothing, etc. (Jan 2022 – Nov 2022)



Start Smart for Your Baby®

4,100 members enrolled to receive focused prenatal services and support to ensure a healthy start for young Iowans. (Jan 2022 – Nov 2022)



Increasing Access to Care

21,621 appointments completed using ITC's telehealth provider. 12,500+ appointments for behavioral health (>50%). Making primary care and behavioral health care convenient and accessible. (Jul 2020 – Oct 2022)

Partnering with Providers



Pay for Performance
Enhances quality of care by focusing on preventive care, screening services and member engagement. ITC incentivizes providers for meeting measures such as cancer screenings and behavioral health care.
24,921 providers participating in 2022.



Community Health Ambassador Program
Partnered with Broadlawns to spearhead an educational program which trained individuals how to help neighbors and other community residents navigate and access community services and other resources, as well as adopt healthy behaviors.



Pilot Doula Program
Partnering with Health ConnectOne and The Doula Network to coach and train doula partners to support ITC pregnant members in Polk, Johnson, and Muscatine counties. Pilot includes 60 members and provides childbirth education, in-home meetings, and offers postpartum home visitation and breastfeeding support.