



Funding for the Future

Proposed 3 Year Budget for Development of an Iowa Statewide Health Data Utility

As a charitable non-profit, CyncHealth strongly believes in pricing standardization. Utilizing adjusted discharges model (ADM), based on the most recently filed Medicare cost report, is a fair & equitable model to all hospitals across the rural & urban parts of Iowa.

An ADM fee structure maintains parity between rural & urban providers that would not be attainable with a flat fee model. In the future, Iowa hospitals would fund approximately \$4-\$5 per ADM for their 1/3 of the annual budget.

Based on the current population, the budget of a successful statewide Iowa health data utility (HDU) is projected to be approximately \$12 million starting in calendar year 2023.

National Health Data Utility Funding Model

A robust Health Data Utility is community supported:

- 1/3 State Government
- 1/3 Payers & Purchasers
- 1/3 Providers



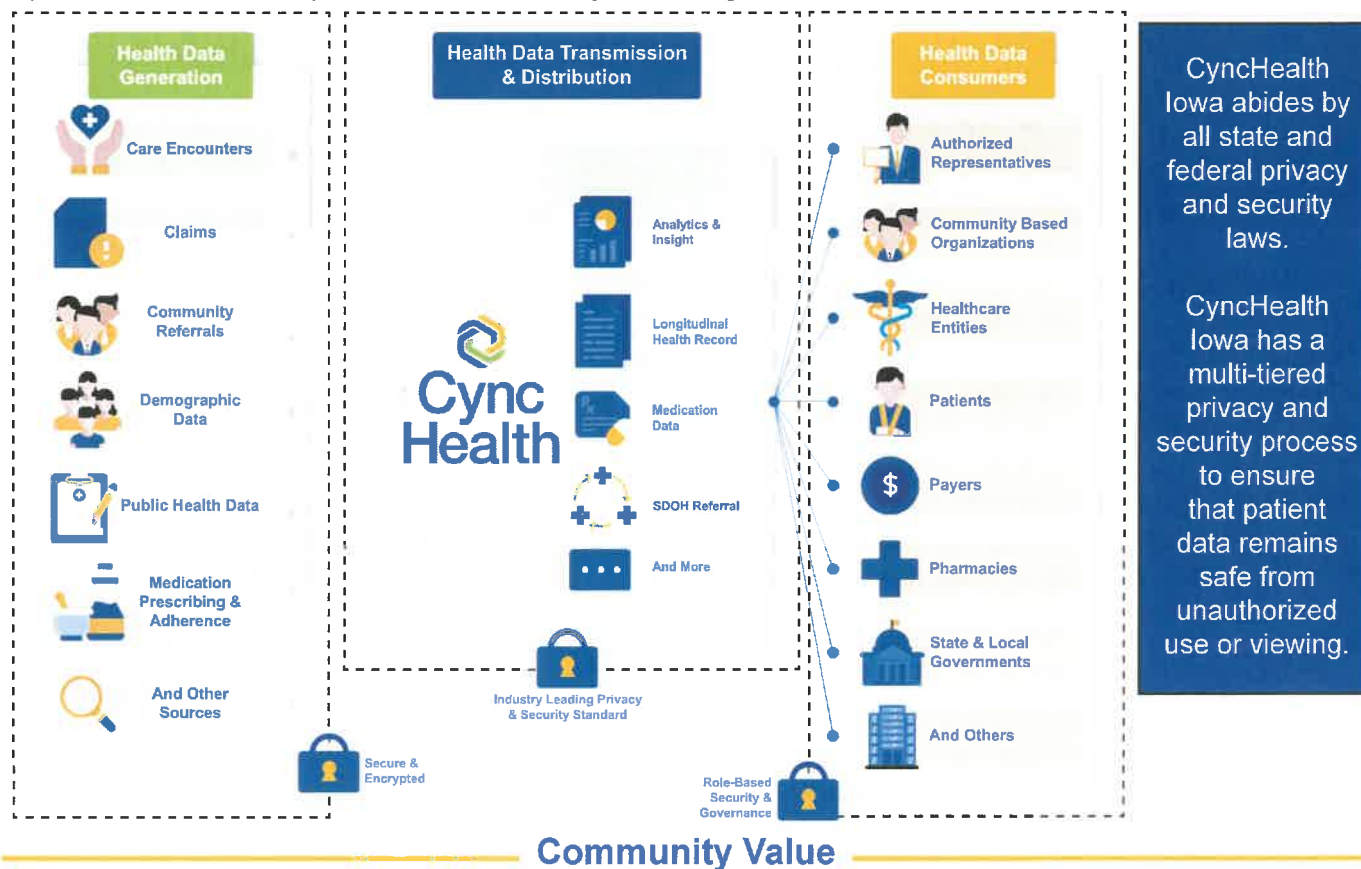
Proposed Budget Breakdown

A robust HDU to support the building of healthy Iowa communities could be achieved through a projected \$12 million per year, over the next three years, starting in calendar year 2023. The funding would be budgeted for the following categories:

| Category | Description | Amount |
|-----------------------------------|---|--------------|
| HL7 Data Feeds & Platform | Connections & technology which allows for provider query access | \$4M |
| Transformation of Data | Data standards evolve & constantly need normalized & aligned to terminology services. | \$3M |
| Cloud Infrastructure | Data governance & tools, & security controls surrounding application in the cloud | \$2.5M |
| Visualization, Reports, Analytics | Building data pipelines & visualizations so multiple use cases can be served by the utility infrastructure. | \$1M |
| Administration & Operations | Human capital to secure, manage and operate the HDU, including other normal business expenses | \$1.5M |
| Total: | | \$12M |

Health Information Exchange 2.0 - The Health Data Utility

HDUs are the next generation of HIEs. While HIEs move clinical data, HDUs have more and new connection types and move health & non-health data to a wide variety of end users. A HDU serves health systems, payers & purchasers, the State, pharmacies, community-based organizations, & others.



Community Value

A robust Iowa Statewide HDU has numerous use-cases and communities across the country are regularly finding new value propositions. Here are just a few examples of the value a community powered HDU can yield:

- Provide real-time visibility to complex patients & empower care teams to collaborate to avoid unnecessary readmissions & ED visits.
- Optimize transitional care management with real time notifications and the identification of specific discharges likely to qualify for Transitional Care Management.
- Provide policymakers and providers with real time, aggregated, and actionable information to develop population health interventions.
- Put Iowans in control of their own healthcare information and data.
- Meaningfully address social determinants of health with access to a multi-state referral network and case management platform.
- Create a seamless and cost-effective patient experience for long term post-acute care providers by providing access to critical data elements needed to transition patients from one care venue to another safely with continuity of care.
- Support value-based care arrangements by providing data for specific quality measures and activities that are important to Medicaid, Medicare, and commercial plans.
- Fulfill the CMS Conditions of Participation requirements in 42 CFR §482.24(d) for sending admission, discharge, and transfer (ADT) notifications in near real-time with Event Notification Services and Care Coordination technology.

Community-powered care for the common good.

CyncHealth Iowa, a 501(c)(3) organization, is a public health data utility that gives healthcare organizations the power to connect the dots across all points of patient care. It's more than sharing data between providers—CyncHealth empowers patients and their care teams to work together for better health outcomes, lower costs, and thriving communities.

Connected Communities are Healthy Communities

CyncHealth, a public health data utility, helps hospitals improve patient outcomes and reduce unnecessary costs by supporting care teams in providing whole person care.

Take value-based patient care to the next level

Healthy communities need thriving hospitals, supported care teams, and access to their medical records.



Avoid negative Merit-Based Incentive Payment System (MIPS) adjustments



Reduce unnecessary costs and protect your hospital's financial solvency



Reduce administrative burden on clinicians and other hospital staff



Improve patient outcomes and empower patients to actively participate in their own care

"[CyncHealth] has been a godsend for me because I have a lot of elderly patients who can't remember who they saw or where they have their scan or which system they used for this. And I can... see who they saw and what they found out and what their imaging showed. I use it on almost every patient I see."

— Richard G. Belatti, MD, Medical Pain Center, PC
Omaha, NE

5 million connected lives across the Midwest—and counting

CyncHealth is the powerful connector that allows you to do what you do best: **care for your community.**

Respond to at-risk patients in their time of need

CyncHealth's Event Notification Services and Care Coordination technology — powered by Collective Medical — helps providers fulfill the CMS mandate of sending admission, discharge, and transfer (ADT) notifications in near real-time.

Create a seamless and cost-effective patient experience for LTPACs

CyncHealth's LTPAC integration capability, powered by PointClickCare, supports Long-term Post-Acute Care Providers (LTPACs) by providing longitudinal clinical information, enabling smooth transitions of care, improving time and cost savings, and offsetting connection fees through available funds.

Meaningfully address social determinants of health

Enhance care coordination and delivery through a powerful, multi-state electronic referral network created in partnership with Unite Us. Health and social service care providers communicate and track outcomes together and ensure patients are connected to the best program to address their needs—from food, housing and transportation to mental health supports, state benefits, and employment services.

A health data utility, built for how your clinicians practice medicine

Better care for patients with instant access to comprehensive and longitudinal health history, including patient encounter-level reports, diagnostic history, allergies, immunizations, and laboratory results from participating facilities across the continuum of care.

Community-powered care for the common good

QCDR

NCOA

HITRUST

CyncHealth, a 501(c)(3) organization, is a public health data utility that gives healthcare organizations the power to connect the dots across all points of patient care. It's more than sharing data between providers—CyncHealth empowers patients and their care teams to work together for better health outcomes, lower costs, and thriving communities.

Let's achieve our shared goal of healthier communities - together.

Join the CyncHealth participant community at cynchealth.org.



© 2021 CyncHealth. All rights reserved. CyncHealth and the CyncHealth logo are trademarks of CyncHealth. All other trademarks used in this document are the property of their respective owners.