



ST. ANTHONY
Regional Hospital

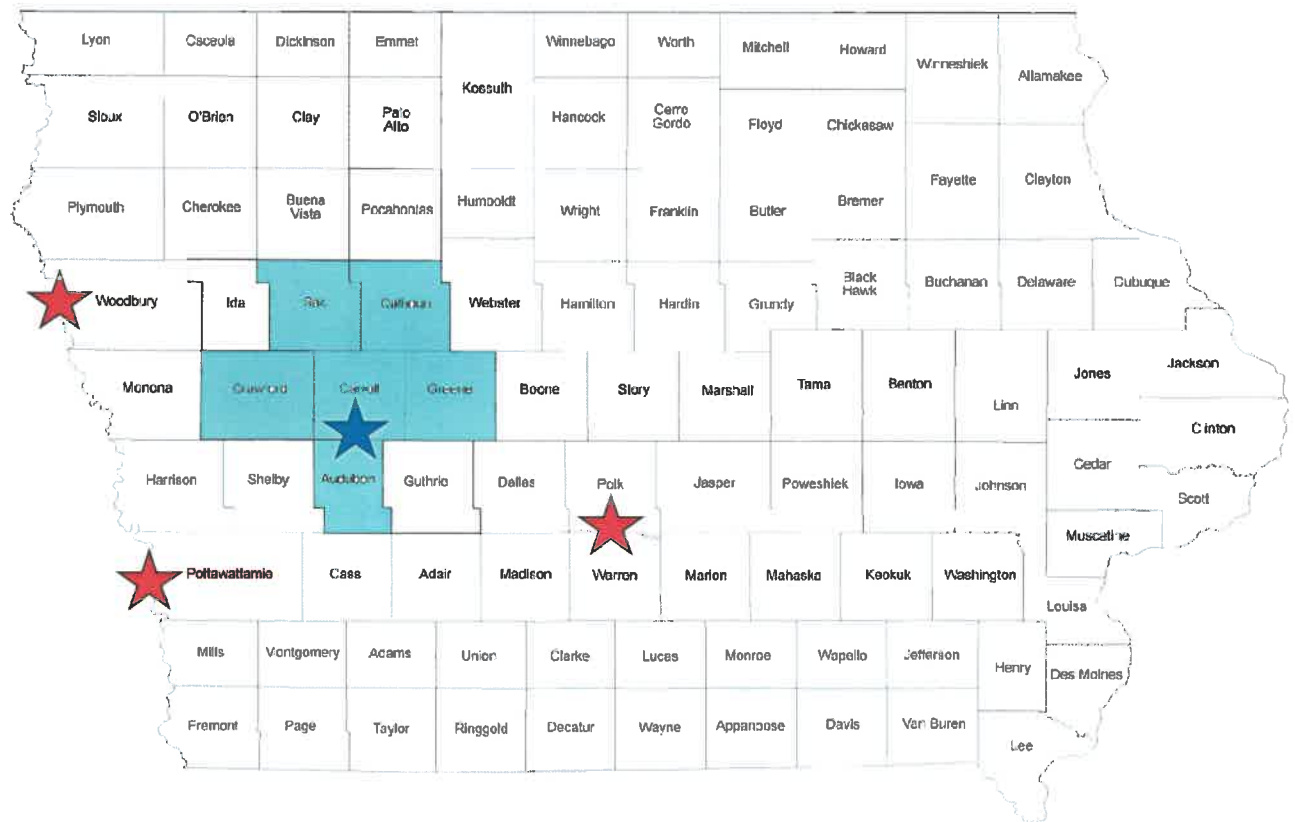
CENTERS OF EXCELLENCE

**REPORT TO HOUSE HEALTH & HUMAN SERVICES
APPROPRIATIONS SUBCOMMITTEE**

FEBRUARY 9, 2022

ST. ANTHONY REGIONAL HOSPITAL CARROLL, IOWA

- Independent, rural regional hospital
- Founded by the Franciscan Sisters of Perpetual Adoration
- Sponsored by St. Anthony Ministries



WHO WE SERVE

- St. Anthony service area:
 - Carroll County
 - Crawford County
 - Sac County
 - Calhoun County
 - Greene County
 - Audubon County
 - Outreach clinics in 5 area communities
 - 100,000 people reside within a 45-mile radius of St. Anthony
 - 31 full-time physicians
 - 12 advanced practice providers
 - Visiting specialists provide care on a regular basis
- Expanded region for:
- Mental health
 - Cancer services
 - Cardiology
 - Ophthalmology
 - ENT
 - Orthopedics
 - OB & Delivery

RURAL OB DESERTS

During the last 15 years, Iowa has seen the closure of 37 labor and delivery units.

Primary reasons:

- Work force issues
- Shifting population
- Financial concerns

Only 3 hospitals provide OB/maternity services within a 45-mile radius of St. Anthony.

Access to top quality maternal and child healthcare enables rural communities to better compete with urban areas for:

- Young people who wish to expand their family
- Recruitment and retention of valuable workforce
- Community growth and vitality

Decreased access to OB/maternity services adversely impacts economic vitality of communities.

In addition, the loss of OB/maternity services results in:

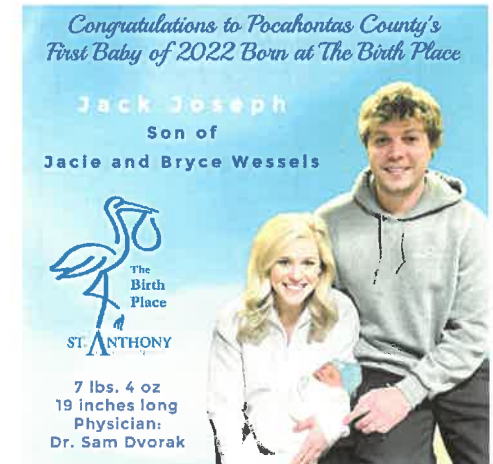
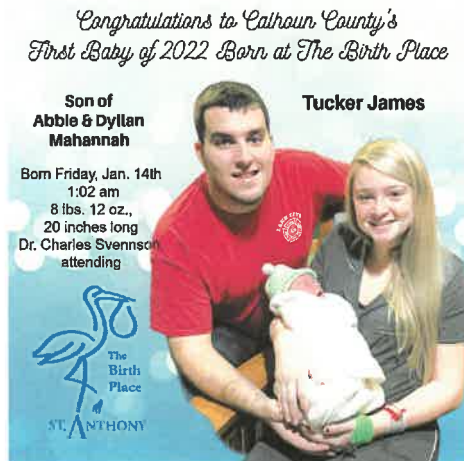
- Increased premature delivery
- Increased out-of-hospital births

In 2017, St. Anthony began serious discussions focused on how to support regional rural communities with their OB/maternity needs.

THE BIRTH PLACE

- The Birth Place is recognized statewide and nationally for high quality care and outstanding patient experience.
- Women's Choice National Top 100 Hospital for Obstetrics
- 10 Delivering Physicians
- 1 OB-GYN
- 1 Pediatrician
- 16 Registered Nurses

355 babies were delivered at The Birth Place in 2021!



CENTER OF EXCELLENCE

- Outreach events in 5 surrounding communities
- Relationship development with hospitals, clinics and community service providers



35 babies were delivered from 10 counties during January 2022 at The Birth Place.

CENTER OF EXCELLENCE: COMMUNITY OUTREACH



LOOKING TO THE FUTURE

- Women's Health Center
- Expanding Telehealth footprint
- Education to other hospitals and communities



THANK YOU!

Trish Roberts, CRFE

Development Director

troberts@stanthonyhospital.org

Scott Ellis, DNP, MBA, BSB, RN, NEA-BC, CENP

Vice President of Patient Services & Chief Nursing Officer

sellis@stanthonyhospital.org

Virginia Uhlenkamp, RN, BSN, MSN

OB Director

vuhlenkamp@stanthonyhospital.org

Ashleigh Wiederin, RN

Outreach Coordinator, The Birth Place

awiederin@stanthonyhospital.org