

IOWA

Transportation, Infrastructure and Capital Budget Subcommittee

University of Iowa Capital Request: MacLean Hall

January 26, 2022

RENEW. RIGHT-SIZE. IMPROVE

Quick Campus Facts

- Campus Size: 1,992 acres
- 32 miles of roads
- 4 miles of tunnels
- 21.2M square feet (8.8M Gen. Ed.)
- 250+ Buildings (Ave. age: 46 years)
- Current Deferred Maintenance Back-log: \$396M

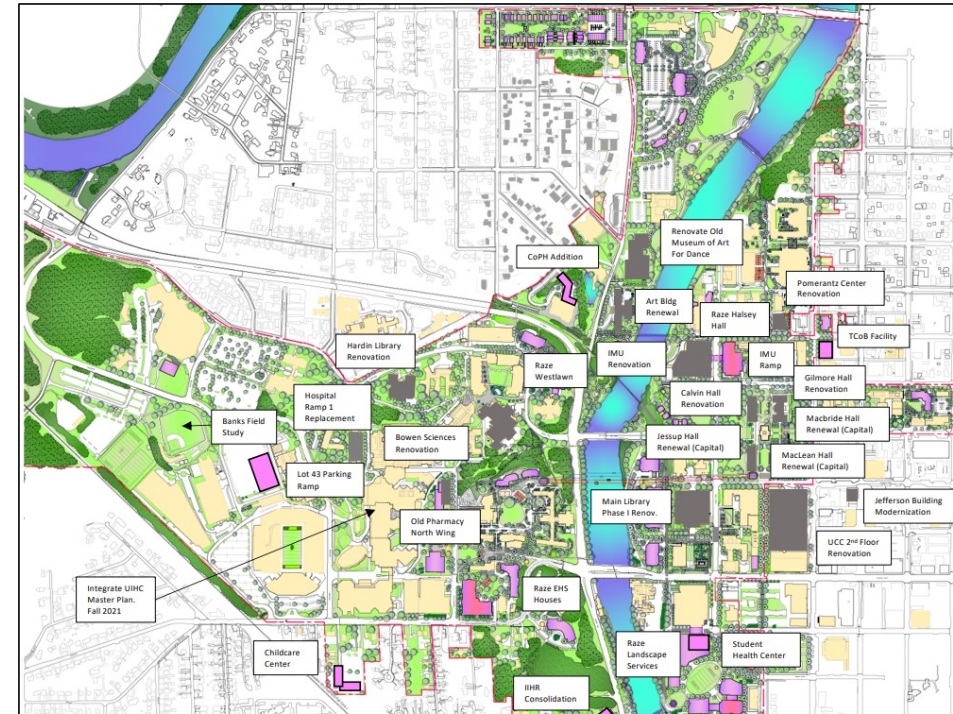


IOWA

RENEW. RIGHT-SIZE. IMPROVE.

Best-practice Campus Master Planning

- Developed and refined over the past 5 years
 - Data-Based: Space-use + Facilities conditions
 - Collegiate + Auxiliary + System Plans
 - Combined and Coordinated
- Vast majority of capital projects funded by sources other than the State
 - Gifts, Grants, Program Revenues
 - State Asks limited to top/major academic needs
- Immediate, Medium & Long-term planning
 - Based on the UI Strategic Plan and Missions
 - Maximizing ongoing cost-of-ownership efficiencies
 - **10-year priority: Right-sizing the UI campus**



Campus Planning System Diagram

200K SF of outdated Main Campus space razed in the last 2 years...
Plans underway for the next 200K

IOWA

RENEW. RIGHT-SIZE. IMPROVE.

A Thank You, to our State and our Governor!

College of Pharmacy

- \$64.3M (over 4 years) from Iowa
- \$32M from UI/Pharm/Donors
 - Plus \$31M from UI to fit-out UI Pharmaceuticals operations
- State-of-the-art teaching + research
 - Allows 20% class size increase
 - Preparing more Pharmacists for Iowa
- UI Pharmaceuticals (UIP)
 - Only university-operated sterile product manufacturing facility in the US
 - Economic development for Iowa!

Opened in 2020!



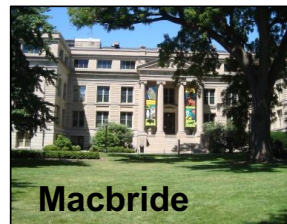
IOWA

RENEW. RIGHT-SIZE. IMPROVE.

UI Capital Request – Partnering for students, at the heart of our campus

- #1 UI and BOR priority: MacLean Hall
- \$27,975,000
 - FY23: \$2.8M
 - FY24: \$12.4M
 - FY25: \$12.775M
 - UI partnering funds of \$30M to enable the Pentacrest projects
- Originally approved for funding by the State in 2007
 - Delayed due to the Flood of 2008
- Built in 1912 – Key part of the historic Pentacrest and Academic Core

*The Pentacrest:
The very core of the UI campus
and the birthplace of our state*



Future year requests to complete modernization of the Pentacrest: **Jessup Hall (1924), Macbride Hall (1908)**

IOWA

RENEW. RIGHT-SIZE. IMPROVE.

UI Capital Request – Partnering for students, at the heart of our campus

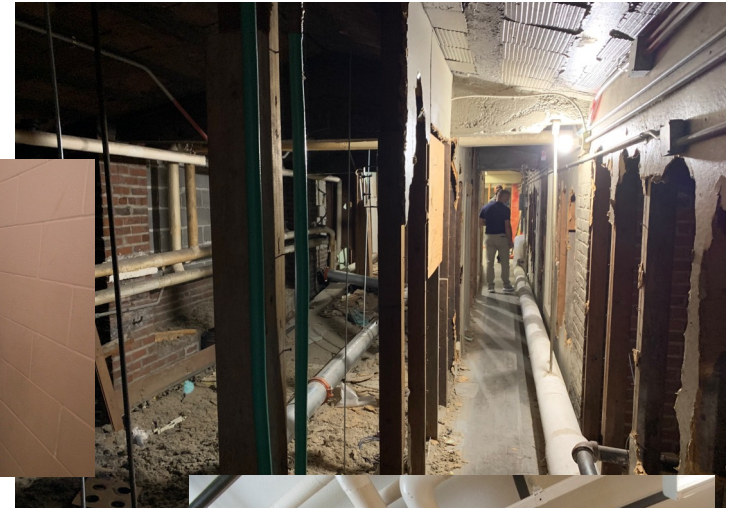
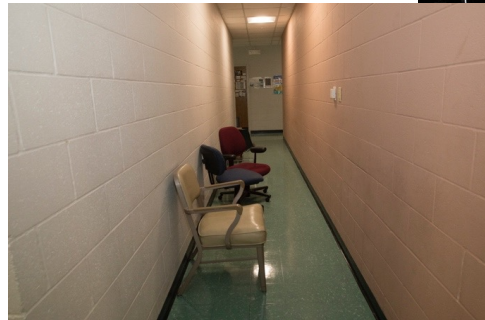
➤ #1 UI and BOR priority: MacLean Hall

➤ Work to be done - Stewardship:

- Building systems
- Space layouts
- Finishes
- Enclosure

➤ A great building, but not one suitable for today's students and programs

- Few updates in 110 years
- Eliminates \$8.5M in current and growing deferred maintenance

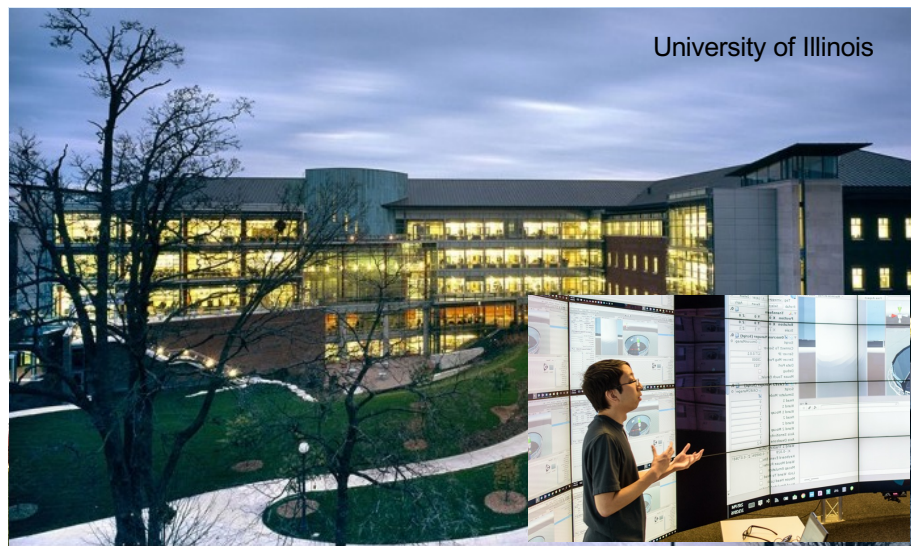


IOWA

RENEW. RIGHT-SIZE. IMPROVE.

UI Capital Request – Partnering for students, at the heart of our campus

- #1 UI and BOR priority: MacLean Hall
- Modernized and Programmed for Computer Science
 - Fast-growing major – 400% growth since 2006
 - ***In-demand + high-need profession in Iowa***
 - *Fields in I.T./Health Care/Education/Insurance/Financial*
- Others are building new, and by doing nothing we risk losing our best to other states...
- This partnership takes care of what we have, protects our history, and ensures our students succeed!



IOWA

RENEW. RIGHT-SIZE. IMPROVE.

Thank you



IOWA