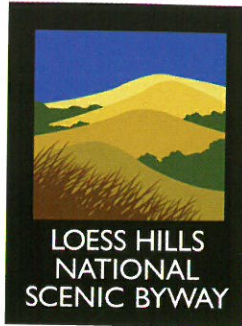


LOESS HILLS

NATIONAL SCENIC BYWAY

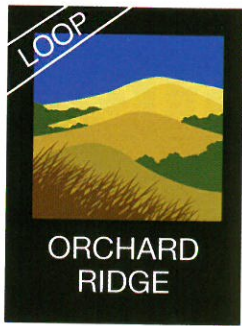
Shaped by Nature





Scenic Byway Spine

The spine consists of paved roadways.



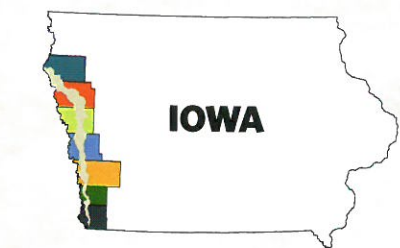
Excursion Loop

These loops consist of a variety of paved and gravel roadways.

1. Ridge Road Loop
2. Butcher Road Connection
3. Stone Park Loop
4. Smokey Hollow Loop
5. Stagecoach Trail Loop
6. Wilderness Loop
7. Larpenteur Road Connection
8. Preparation Loop
9. Fountainbleu Loop
10. Orchard Ridge Loop
11. Sawmill Hollow Loop
12. Hitchcock Loop
13. Pony Creek Loop
14. Waubonsie Loop
15. Pleasant Overview Loop
16. Spring Valley Loop

LEGEND

- Missouri River
- Interstate
- Federal Highway
- State Highway
- Incorporated Town
- Loess Hills Landform Region
- County Boundary



ABOUT THE BYWAYS MAP

The main part of the Byway, called the spine, is marked in solid green on the maps. The spine is always on paved roads, ranging from two-lane county highways to state highways and four-lane interstates.

Excursion loops and connections are marked in light blue. These routes are a mix of gravel and paved roads.

B Roads: While traveling the Byway and its excursion routes, you may notice signs noting "B" roads off to the side of the routes. This guide does not direct readers to use any B roads. Those signs warn travelers to use those low-maintenance roads at their own risk especially if they're wet.



Hitchcock Nature Center, Pottawattamie County

© MIKE WHYTE

CONTENTS

- Outdoor Wonders 4
- Plymouth County 5
- Woodbury County 7
- Monona County 10
- Harrison County 13
- Pottawattamie County 17
- Mills County 22
- Fremont County 24
- Land Management 27
- Accommodations 28

All pictures, unless otherwise noted, are provided by Image © 2011 Kenneth G. West Jr., all rights reserved. www.ioscapes.com
 Cover image: Monona County drive along the Loess Hills National Scenic Byway. Image pictured above: Pottawattamie County, Hitchcock Nature Center

**LOESS HILLS
Shaped by Nature**

Experience panoramic views, fascinating land forms and rare natural wonders

Majestic views are the hallmark of a trip on the Loess Hills National Scenic Byway. Formed by deposits of very fine, windblown soil at the end of the last ice age, these are not your average hills. Spanning 15 miles at their widest and nearly 200 miles long from Sioux City, Iowa to St. Joseph, Mo., you'd have to travel to China to see any taller loess formations.

The views include panoramas of the fertile Missouri River Valley farmland, forested hills and vast grasslands. Scenic overlooks are strategically placed and offer interpretive signage along the parking. The byway features a 220-mile paved main route, with an additional 185 miles of optional excursion loops that range from interstate highways to gravel roads. These roads lead you from the Missouri border to Akron and are easily accessed from Interstates 29 and 80.

LOESS HILLS

Shaped by Nature

OUTDOOR WONDERS

Hundreds of opportunities exist along the byway to get out and experience the Loess Hills. One popular destination is the state's largest remnant prairie, Broken Kettle Grasslands Preserve near Sioux City. This is a great place to search for the rare flora and fauna found in the Loess Hills. The region's state forests and preserves are also good bets, but a trip in early June to the annual Loess Hills Prairie Seminar is the best way to learn about the extraordinary natural resources found here.

A must see for birders is the 45-foot high observation tower at Hitchcock Nature Center Area north of Crescent. During fall migration, the tower is staffed during daylight hours with volunteers who count hawks and other raptors on their journey south.

HISTORIC LOESS HILLS

The story of the Loess Hills spans thousands of years and there are plenty of stops along the byway where you can learn more about this fascinating topography.

At the northern reaches, the Loess Hills Interpretive Center and Dorothy Pecaut Nature Center have interactive exhibits explaining the geology and natural history of the area. Other sites interpret Native American occupation of the Loess Hills that dates back 6,000 years.

The byway traces the route of the Lewis and Clark Corps of Discovery, which made its way through the area in 1804 as the expedition headed northwest towards Oregon. In Sioux City, you can visit the Lewis and Clark Interpretive Center or a 100-foot obelisk atop a bluff overlooking the Missouri River that marks the grave of Sgt. Charles Floyd, the only casualty of the Corps' expedition.

Wrap up your historical tour with fun stops at other interesting museums with a focus on railroads, local history, ice cream or the country's largest squirrel cage jail.

FOOD AND DRINK

The soil and terrain of the Loess Hills resemble that of world-renowned wine regions of France and Germany, so in recent years wineries have sprouted up all along the byway. For more information go to www.iowawineandbeer.com

You'll also find all types of restaurants, large and small, in the communities along the byway. As you travel through metropolitan cities to towns with less than 100 people, you'll also find a variety of lodging from cozy bed and breakfasts to familiar hotels.

With so much to offer, it's easy to see why this route has been designated as one of America's National Scenic Byways. Plan your trip to see the beauty of these hills, thousands of years of history and endless scenic views.



Photo courtesy of Blake Mayberry, Mills County



Photo courtesy of Blake Mayberry, Mills County

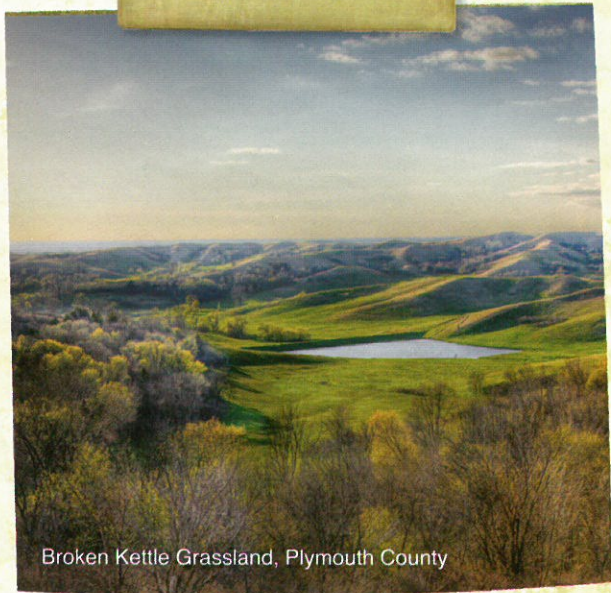


© KEN WEST

Preparation Canyon Unit, Loess Hills State Forest overlook, Monona County

SCENIC BYWAY

PLYMOUTH



Broken Kettle Grassland, Plymouth County

PLYMOUTH COUNTY



THE BYWAY, north to south

- When you arrive in Akron, look for information about the Loess Hills and the Byway on the information kiosk in the city park along Iowa Hwy. 12 on the city's north side. Although Akron is the northern anchor of Iowa's Loess Hills, you're no doubt looking around and wondering, "What hills?"
- If you watch as you drive south out of Akron on Iowa Hwy. 12, you will see them rise gently out of the relatively flat fields like gentle swells on the ocean on the east side of the highway within a couple miles of town. To the west you'll see the Big Sioux River, Iowa's boundary with South Dakota.
- When you arrive in Westfield, the westernmost city in Iowa, be sure to follow the signs to the Loess Hills Interpretive Center which has new exhibits in a former one-room schoolhouse at Union and Linden.
- As you continue south on Highway 12, you will notice the Hills rise in height and become more sharply etched. Similarly, you will also notice that, at times, the highway lies on a narrow ledge of land between the base of the Hills and the Big Sioux River.
- A few miles south of Westfield, on the east side of the road, is the west entrance to 5 Ridge Prairie. A rustic camping cabin sits on a ridge overlooking the Big Sioux river valley.

EXCURSION LOOPS
Butcher Road Connection

- A bit more than 5 miles south of Westfield on Iowa Hwy. 12, you will come to Butcher Rd., where you will turn left (east). This 4-mile gravel road meanders from the base of the bluffs to a ridge where you meet County Rd. C43 (North Ridge Road, which forms the Ridge Road Loop). Butcher Road provides several places to look over the Broken Kettle Grasslands but no turnouts exist. So if you park, do so with care.

Allow 10 to 15 minutes to drive this gravel route.

Ridge Road Loop

- Just south of Westfield on Iowa Hwy. 12, turn left (east) onto County Rd. C43.
- One mile later, you should follow C43 as it turns right (south, as Birch Rd.) and just more than a half-mile later, it becomes North Ridge Rd. Soon, the road lifts you above the floodplain and takes you along several ridges, offering vistas of Iowa and South Dakota. Along the way you will see Butcher Rd, which forms the Butcher Road Connection.
- About 3 miles after coming upon Butcher Rd., you will turn right (southwest) onto County Rd. K18 to return to Iowa Hwy. 12, 4 miles later.
- Along the way you will see 260th St., the dirt road entrance to Five Ridge Prairie, a Plymouth County park.

Allow about 25 minutes travel time for this 12-mile trip on asphalt and gravel roads.



Hillview Recreation Area, Hinton

BYWAY ATTRactions

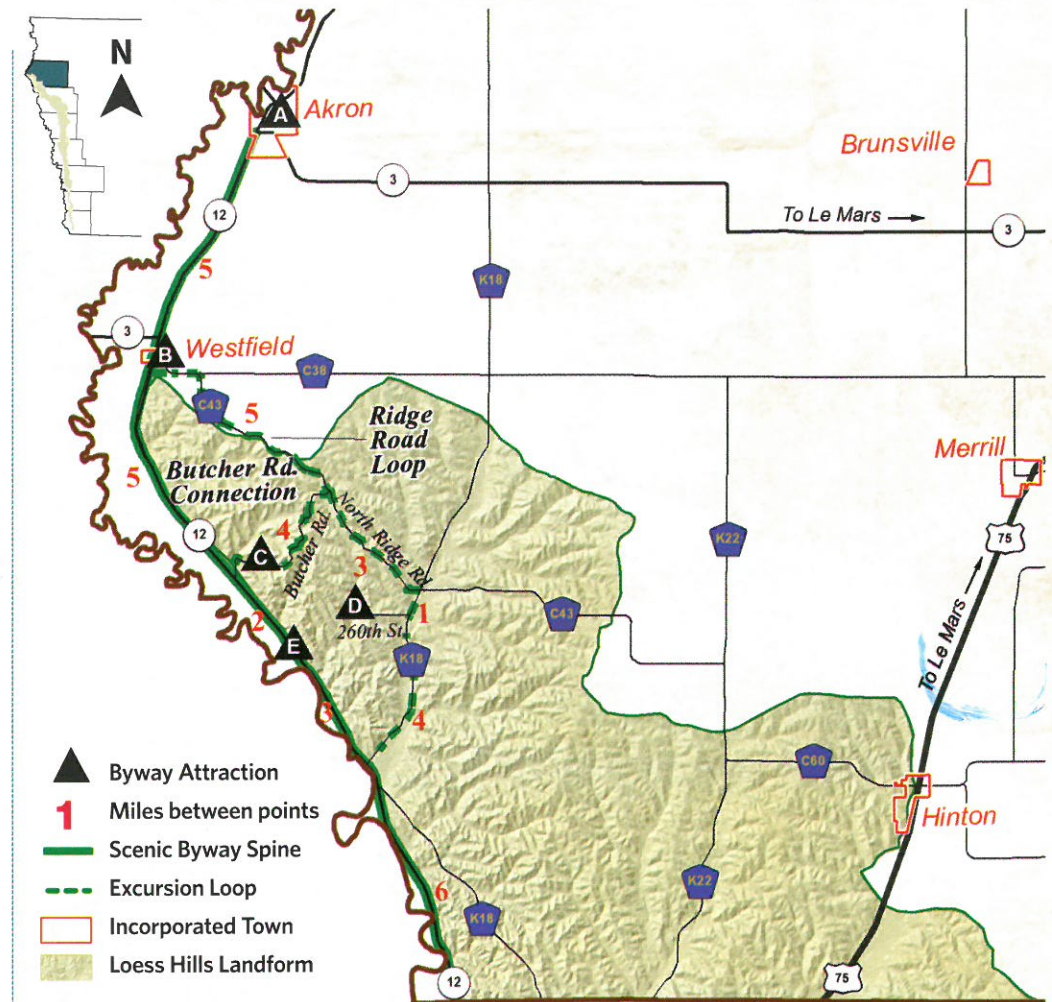
A Information Kiosk This kiosk is located in Akron's city park along Iowa Hwy. 12 with information on the Loess Hills and the Byway.

B Loess Hills Interpretive Center Displays and interactive components that explain the creation of the Loess Hills and the plants and animals that live in them. Contact Westfield City Hall for admission. 712-568-2631.

C Broken Kettle Grasslands Enjoy this 4,500-acre prairie preserve, Iowa's largest remnant of the prairies that once covered most of the state. This preserve contains flora and fauna not found in other parts of the Loess Hills, including prairie rattlesnake and ten-petal blazing star. No trails exist within the preserve. To arrange a visit, contact the preserve's office, 712-568-2596, or the Nature Conservancy, 515-244-5044. www.nature.org/wherewework/northamerica/states/iowa/preserves/art2210.html

D Five Ridge Prairie County Park In this 960-acre park, one of the larger roadless areas in the Loess Hills, you can feel the climate change between open prairie ridges dried by the sun and wind and the shadowy woods which are cooler and more humid. Hiking trails range from easy to rugged. The entry, 260th St., which is about a mile northeast of Iowa Hwy 12 via the north branch of County Rd. K18, is a dirt road that is impassable when wet. 712-947-4270. www.plymouthcountyparks.com

E Camping Cabin Located at 5 Ridge West. 7 miles south of Westfield.



RED NUMBERS: The county maps show the mileage between various points on the spine.

Byway Attractions, indicated by triangles with black letters, are the most closely related to the hills in one manner or another.

Area Attractions listed are other places you might want to visit. These are not on the Byway route but are nearby and are mentioned below. Shaded portions of the maps illustrate the extent of the landform of Iowa's Loess Hills which is determined by where the depth of the loess is greater than 60 feet.

★ AREA ATTRactions

AKRON
Dunham Preserve Riverside trail, foot bridges and wildflowers. Contact City Hall 712-568-2041.

HINTON
Tucker Hill 712-568-2041
26001 Titan Rd., Hinton, IA 51024
www.tuckerhillwine.com

LE MARS
Blue Bunny Ice Cream Parlor
712-546-4522
www.bluebunnyicecreamparlor.com

PLYMOUTH COUNTY CONSERVATION BOARD
Canoe rentals for use on the Big Sioux and Little Sioux Rivers. 712-947-4270.
www.plymouthcountyparks.com

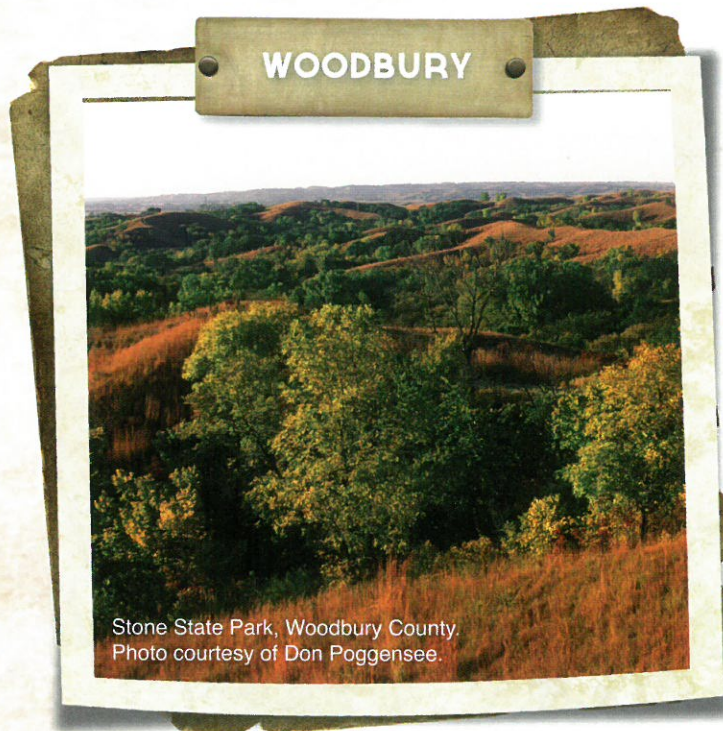
PLYMOUTH COUNTY HISTORICAL MUSEUM
County history plus 500 musical instruments dating from King Tut's time to the present. Open Tuesday - Sunday, 1-5 p.m., summer. 712-546-7002.

SERVICES AVAILABLE

- Akron:** B&B, Gas, Restaurants, Groceries
- Le Mars:** Lodging, Gas, Restaurants, Groceries
- Westfield:** Gas

i FOR MORE INFORMATION

Plymouth County Conservation Board
(712-947-4270)
www.plymouthcountyparks.com



Stone State Park, Woodbury County. Photo courtesy of Don Poggensee.

Stagecoach Trail Loop

You will be on paved and gravel roads for most of this 7-mile route that heads west of Smithland on Iowa Hwy. 141 to County Rd. K67 which you take to the south. Watch for traces of the stagecoach trail that once connected Sioux City with other communities. Southwood Conservation Area is on the route as are Fowler Forest Preserve and the Smithland Museum and Log Cabin. The route has limited sightlines. Along the way, note a rarity in the Loess Hills — a nob hill standing all by itself on the west side of K67.

Allow about 15 minutes to drive this gravel route.

Stone Park Loop

You will find this 3-mile paved route pretty curvy as it passes through the 1,069-acre state park on the northwest side of Sioux City. Be aware that hikers are on the road at times.

Allow about 15 minutes for this 3-mile paved loop.

BYWAY ATTRACTIONS

A Stone State Park

On Sioux City's northwest side, the 1,069-acre park has prairie-topped ridges and dense woods. Visitors can see three states from Dakota Point and Elk Point overlooks. Multi-use trails, shelters, 9 electric and 21 non-electric campsites, RV sites and interpretive panels are throughout the park. 712-255-4698. www.iowadnr.com/parks/state_park_list/stone.html

B Dorothy Pecaut Nature Center

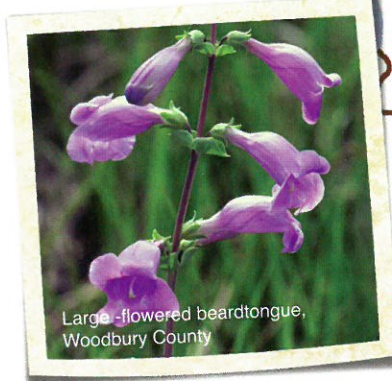
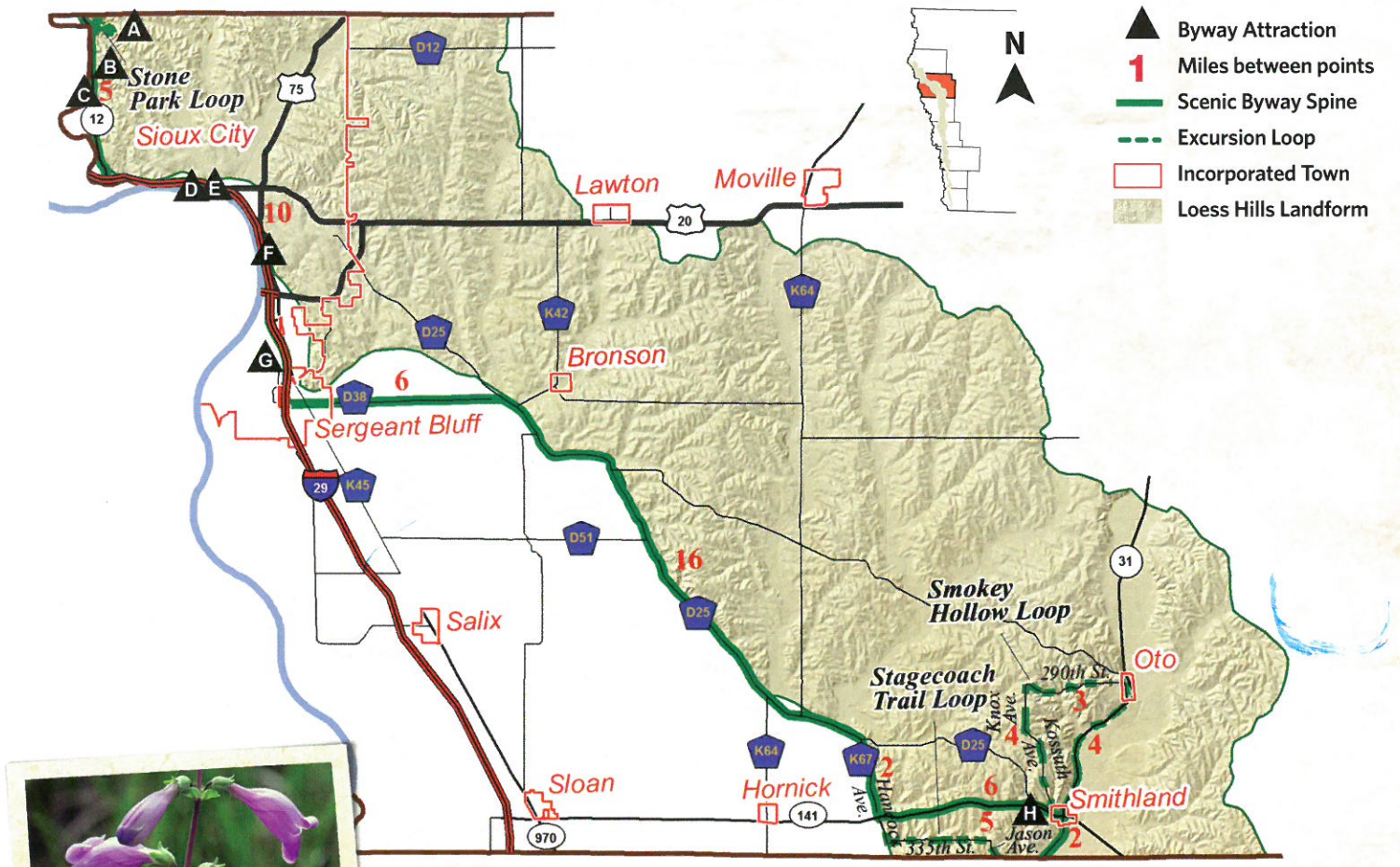
Nestled in woods just south of the Hwy. 12 entrance to Stone State Park, the center is devoted wholly to the Loess Hills. The center has live reptile and fish displays, hands-on exhibits, a butterfly garden and a walk-through exhibit showing life under the prairie. Open 9 a.m. to 5 p.m. Tuesday - Saturday and 1 - 5 p.m. Sundays. 712-258-0838. www.woodburyparks.com

C Siouxland Historical Railroad Association

3400 River Rd. south of Dorothy Pecaut Nature Center on Highway 12. In the former Milwaukee Railroad roundhouse complex, the museum displays the city's historic steam locomotive, GH 1355 (which is on the National Register of Historic Places), a switch engine and rolling stock. 712-233-6996.

D Sergeant Floyd River Museum and Welcome Center

Off I-29 at Exit 149, this former survey and inspection boat of the U.S. Army Corps of Engineers hosts scale models of boats that have traveled the nation's inland waterways as well as information about the Lewis and Clark expedition. Open 9 a.m. - 5 p.m. daily except major holidays. 712-279-4840. www.siouxcitymuseum.org/sgt_floyd.asp



Large-flowered beardtongue, Woodbury County

RED NUMBERS: The county maps show the mileage between various points on the spine.

Byway Attractions, indicated by triangles with black letters, are the most closely related to the hills in one manner or another.

Area Attractions listed are other places you might want to visit. These are not on the Byway route but are nearby and are mentioned here. Shaded portions of the maps illustrate the extent of the landform of Iowa's Loess Hills which is determined by where the depth of the loess is greater than 60 feet.

WOODBURY COUNTY

THE BYWAY, north to south

- Enter Woodbury County on Highway 12 near the entrance to Stone State Park on Iowa Hwy. 12. Continue south near the base of the Hills, passing through western Sioux City. There, the Byway joins I-29 at Exit 151 and travels south for 10 miles along the Missouri River.
- At Exit 141, you leave I-29 for County Rd. D38 which runs east through some small hills before turning southeast onto County Rd. D25.
- After traveling on the flanks of the Hills, which offer views of the wide valley of the Missouri River, enter the Hills and shortly afterward arrive in Smithland.
- From there, take County Rd. L12 to the south (right).

EXCURSION LOOPS

Smokey Hollow Loop

- You travel a 12-mile-long triangle north of Smithland in a region dominated by woods and farm fields. The route begins in Smithland and heads north on Iowa Hwy 21 to Oto.
- In Oto, turn left (west) onto 290th St. until you reach Knox Avenue about 8 miles later.
- There, turn left (south) onto Knox which eventually returns you to the west side of Smithland when you meet Old Highway 141 and turn left (east).
- Sioux outlaw Inkapaduta camped in this region before leading others north to commit the Spirit Lake Massacre in 1857.

Allow 20-25 minutes for this loop on paved and gravel roads.

E Lewis and Clark Interpretive Center

Near the Sgt. Floyd Welcome Center, this center presents you with interactive displays, animatronics figures and changing photo exhibits relating to the expedition led by Lewis and Clark who passed through here in 1804 and 1806. Also learn about Lakota games and the Missouri River and explore the Garden of Discovery. Open Tuesday to Saturday, 9 a.m. - 5 p.m.; Sunday Noon - 5 p.m. 712-224-5242. www.siouxcitylcc.com

F Sergeant Floyd Monument

I-29 exit 143. During their two-year exploration of the Louisiana Purchase, Lewis and Clark lost only one man, Sergeant Charles Floyd who modern experts believe died of appendicitis. He was buried atop this bluff

in August 1804 and the stone obelisk memorializing him is the first National Registered Historic Landmark in the nation.

G Mid-American Air Museum

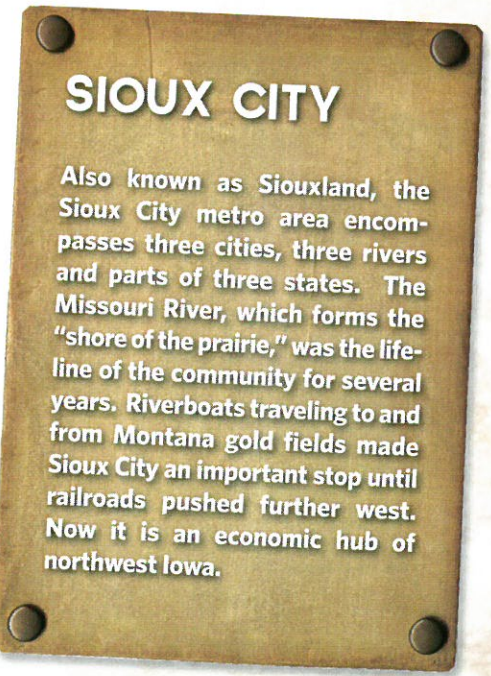
Sioux Gateway Airport off I-29 at Exit 141. Aviation museum with 24 full-size military and commercial aircraft and an impressive collection of military uniforms. 712-252-5300 www.midamericaairmuseum.org

H Fowler Forest Preserve

Just west of town. Operated by Woodbury County Conservation Board. 712-258-0838. www.woodburyparks.com

Historical Pioneer Log Cabin:

Just south of Smithland.



★ AREA ATTRACTIONS

SIoux CITY

Argosy Casino I-29 exit 149. Slots, table games, restaurants, observation deck and live entertainment in a 24/7 setting. 800-424-0080 or 712-294-5600. www.argosycasinos.com/siouxcity

Chris Larsen Park I-29 exit 149. A river-side park with the Anderson Dance Pavilion, playground, marina, sports courts and a paved trail that follows the Missouri and Big Sioux Rivers. www.sioux-city.org/component/content/article/280-parks-a-recreation-park-information/911-chris-larson-park

Hannel Cellars 2504 W 15th St. Place, Sioux City, IA 51103. 712-255-0075

Floyd Blvd. Local Foods Market I-29 exit 147A. Near historic Fourth Street District, this market includes a farmers market that's open Wednesday and Saturday, year-round and promotes organically grown produce; the Market Store, which offers organic meats, baked goods, milk, etc. and is also open year-round; and the Firehouse Restaurant, which is open Wednesday to Saturday, 10 a.m. – 2 p.m. and 5-9 p.m. 712-224-3535.

Sioux City Art Center I-29 exit 147B. A 45,000-square-foot facility that's a work of art in itself with wonderful exhibits and a hands-on children's gallery. Open 10 a.m. – 5 p.m. Tuesday, Wednesday, Friday, Saturday; 10 a.m. – 9 p.m. Thursday; and 1 – 5 p.m. Sunday. 712-279-6272. www.siouxcityartcenter.org

Sioux City Public Museum I-29 exit 147B. Set in a Romanesque mansion with collections ranging from Indian artifacts to Civil War items. Open 9 a.m. – 5 p.m. Tuesday to Saturday; 1-5 p.m. Sunday. 712-279-6174. www.siouxcitymuseum.org

Trinity Heights I-29 exit 147A. A religious site with a life-size wood carving of DaVinci's Last Supper and 30-foot-tall, stainless steel statues of Christ and Mary amid the gardens. Open 10 a.m. – 4 p.m. Monday to Saturday; noon – 4 p.m. Sunday. 712-239-5835. www.sctrinityheights.org.

Woodbury County Courthouse I-29 exit 147B. Built in 1917, the nation's largest government building designed in the Prairie School style of architecture. 712-279-6539. www.woodbury-ia.com/photos.asp

SIoux CITY

Inkpaduta Canoe Trail More than 130 miles long, the Little Sioux River, which begins in Spencer, has six access points in Woodbury County. 712-225-5959. www.woodburyparks.com

SLOAN

WinnaVegas Casino with slot machines, table games, restaurant, snack bar and lounge, off I-29 at Exit 127. 800-468-9466 or 712-428-WINN www.winnavegas.biz

SERVICES AVAILABLE

- Sergeant Bluff:** Lodging, Gas, Restaurants, Shopping, Groceries
- Sloan:** Lodging, Gas, Groceries, Casino
- Smithland:** Gas, Groceries
- Sioux City:** Lodging, B&B, Gas, Restaurants, Groceries, Casino, Shopping, Parks, Marina, Airport, Camping

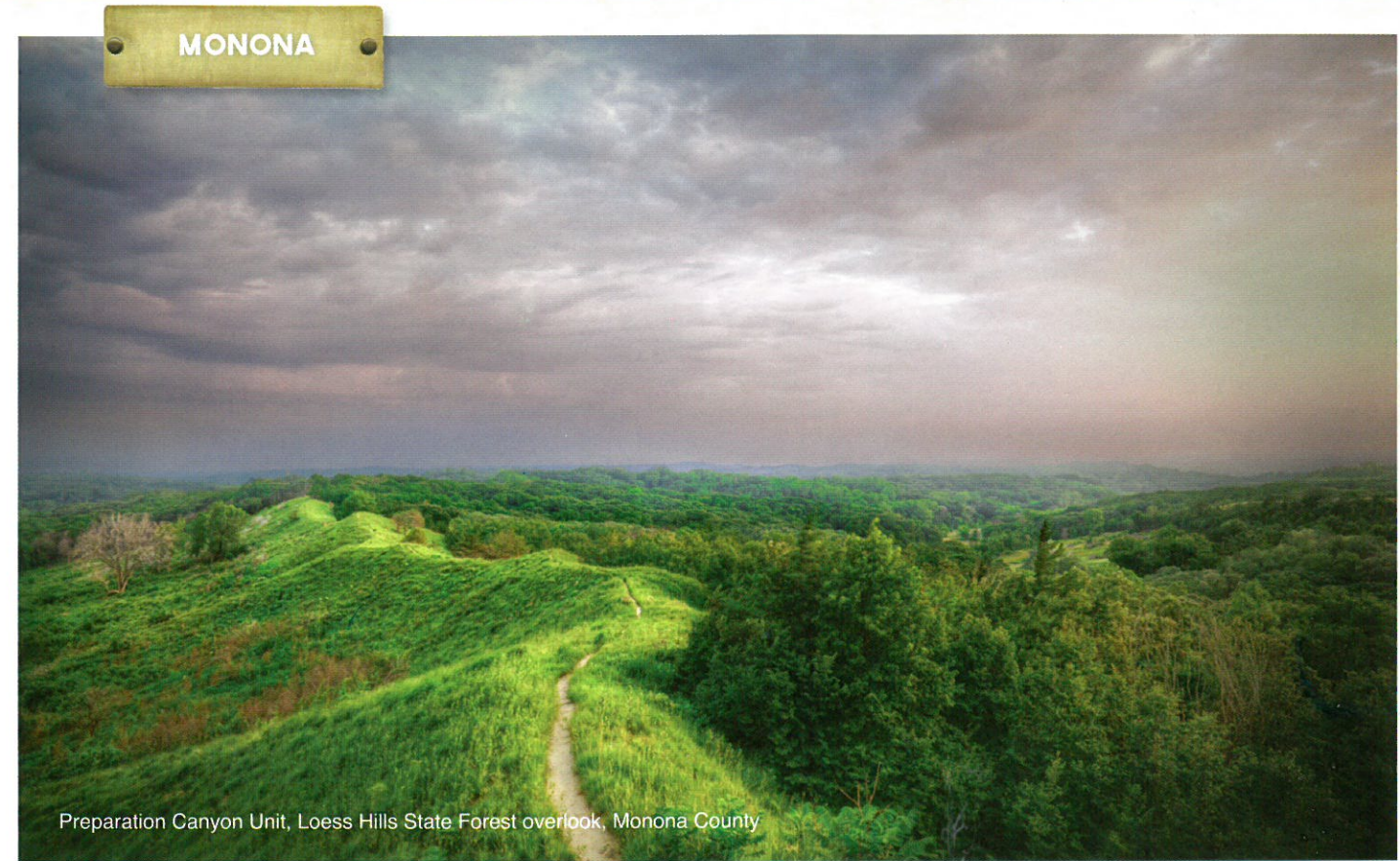
i FOR MORE INFORMATION

Sgt. Bluff Welcome Center: 712-943-4860

Sgt. Floyd River Museum and Welcome Center 800-593-2228 or 712-279-4840 www.siouxcitymuseum.org/sgt_floyd.asp

Sioux City Tourism Bureau: 800-593-2228 or 712-279-4800 www.siouxcitytourism.com

Woodbury County Conservation Board: 712-258-0838 www.woodburyparks.org



Preparation Canyon Unit, Loess Hills State Forest overlook, Monona County

MONONA COUNTY



THE BYWAY, north to south

- Enter Monona County on County Rd. L12 from Smithland.
- About 5 miles after leaving Smithland, turn left (east) at 133rd St. which is also County Rd. E16 which leads you across the floodplain of the Little Sioux River and into the Hills just east of the river.
- After being on 133rd St. for just less than 3 miles, (southeast), turn right (south) onto County Rd. L20 to ramble through more of the Hills until you're on their east side, heading south toward Castana, 8 miles later,
- As you approach Castana, turn right (south) onto Iowa Hwy 175 to go down the Maple River valley toward Turin.
- When you meet Iowa Hwy. 37, 4.5 miles later, turn left (east) for 1.5 miles until you reach County Rd. L16
- At County Rd. L16, turn right (south) to drive County Rd. L16 until it joins County Rd. E54, about 7.5 miles later. In less than another mile, you will enter Moorhead.
- In Moorhead, you will come to Iowa Hwy. 183 where you will turn right (southeast) to take that highway down the Soldier River valley to the county's southern border, just over 5 miles away.

EXCURSION LOOPS

Larpenteur Memorial Road Connection

- You take paved County Rd. L14 all the way on this 5.5-mile route that begins at the junction of L14 and L12 and follows the base of the Hills south to Turin. Small parking lots serve as trailheads for hikers. Allow about 15 minutes to drive this route.
- At Turin, either turn left (east) onto Iowa Hwy. 175/37 to rejoin the Byway Spine east of town or continue south on County Rd. L14 which starts Preparation Loop.

Allow about 15 minutes to drive this paved route.

Preparation Loop

- Start this 15-mile loop by heading south from Turin for nearly 9 miles along the base of the Hills on County Rd. L14 (also called Larpenteur Memorial Road).
- Turn left (east) onto County Rd. E60 which lifts you up into the Hills.
- Upon meeting Oak Avenue 1.5 miles later, turn left (north) and travel up that road for about half a mile.
- At 314th St. turn right (east) that leads to the entrance of Preparation Canyon State Park in another mile.
- At the entrance to the state park, if you turn left (north) at the Y-intersection, you will continue on 314th to the Byway's spine Hwy. 183, 2 miles away.

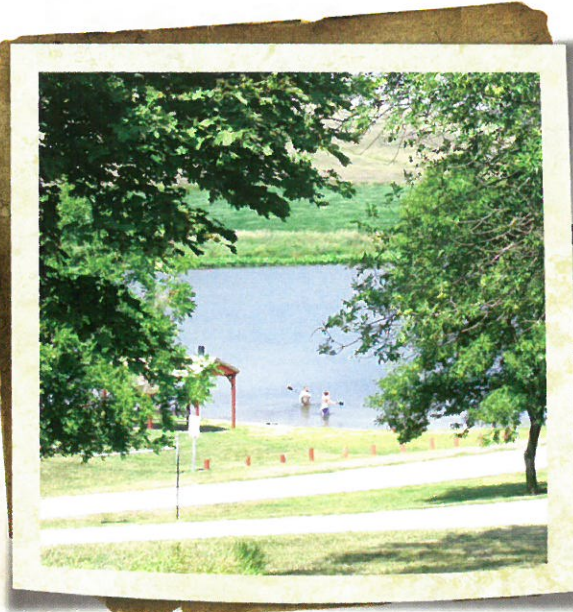
Allow about 30 minutes for this drive on paved and gravel roads.



Stone State Park, Woodbury County



Dorothy Pecaut Nature Center, Sioux City



Oldham Recreation Area, Soldier

EXCURSION LOOPS
Wilderness Loop

- You travel on paved and gravel roads on this 13-mile loop which begins by continuing to go south on County Rd. L12 after the Byway Spine turns off at County Rd. E16. This takes you between two spurs of the Loess Hills and across the valley of the Little Sioux River.
- Almost 5.5 miles after starting this loop, turn left (northeast) at Nutmeg Avenue.
- About 2 miles later on Nutmeg Avenue, you will come to the junction of Oak Avenue which goes both to the right (southeast) and straight ahead (northeast); go straight ahead, continuing to travel along the base of this spur of the Hills.
- Less than 1 mile later, turn right (east) at 160th Street and stay on 160th Street no matter how it twists, dips and gallops over hills as if it's trying to lose you over its 3-mile length. Along the way, 160th Street traverses part of the Loess Hills Wildlife Management Area.
- When you meet Olive Avenue, turn right (southeast) and follow the avenue to where it meets County Rd. L20 – the Byway Spine—less than 2 miles later.
- At County Rd. L20, turn right (southwest) onto County Rd. L20 which will eventually lead you east, toward Castana, a bit more than 2 miles away. Allow about 30 minutes to drive this loop.
- **NOTE:** If you turn right upon meeting Oak Avenue at its intersection with Nutmeg Avenue, you will soon come to the intersection of 178th Street where a small parking lot marks the main area of the Loess Hills Seminar every summer. This is also the junction of the Loess Hills Wildlife Area and the Sylvan Runkel State Preserve (see A under Byway Attractions). Continue to follow Oak Avenue until it meets County Rd. L20, the Byway Spine, where you turn right to head toward Castana. The length of this trip on Oak Avenue is just over 4 miles.

BYWAY ATTRACTIONS

A The Loess Hills Wildlife Area, Turin Loess Hills Nature Preserve and the Sylvan Runkel State Preserve

These three state-owned areas totaling more than 3,500 acres just north of Turin. They are also one of the larger areas in the Loess Hills that show the hills in their native prairie habitat. Some hiking trails begin at parking lots located on 178th Street and Oak Avenue. Call 712-423-2426. Also, this region is where the annual Loess Hills Seminar is hosted by the Western Hills Area Education Agency on the weekend following the Memorial Day weekend. 800-3521-9040.

www.nwaea.k12.ia.us/programs/loesshillsseminar

B R.T. Reese Homestead & Davis Wetland

These areas are managed by the Monona County Conservation Board. These two areas total 154 acres and are connected to the Turin Loess Hills Nature Preserve making the amount of public land accessible from this location over 800 acres, just a mile north of Turin. The R.T. Reese cabin is located at this location and can be rented by the night or week. For more information, call 712-433-2400 or view the cabin at www.mononacountyconservation.com.

C Turin Man Archeological Site

The remains of humans who were buried here approximately 6,000 years ago were found in 1955 and jointly called the Turin Man. They are the oldest human remains found in Iowa. 712-423-1384.

D Ingemann Danish Lutheran Church

Built in 1884 by Danish immigrants, this picturesque country church is just over 4 miles west of Moorhead on County Road E54.

E Preparation Canyon State Park

A group of Mormons rested here in 1853 to prepare for continuing their journey to Utah, but they left the church to follow a charismatic leader who they later discovered was a swindler. This 344-acre park has hiking trails and nine backpack campsites. 712-423-2829.

www.iowadnr.com/parks/state_park_list/preparation_canyon.html

F Loess Hills State Forest

More than 12,000 acres of state-owned land make up this preserve in Monona and Harrison Counties. An observation deck about 1.5 miles west of Preparation Canyon State Park is one of the best overlooks of the interior of the Hills and is handicapped accessible. Interpretive panels explain the region. 712-456-2924. www.iowadnr.com/forestry/loesshills.html

G Timber Ridge Winery and Vineyard

Located at 33500 153rd St., north of Castana. 712-353-6600. www.timberidgeiowa.com

★ AREA ATTRACTIONS

MOORHEAD

Moorhead Cultural Center

Open April to November. Hours: Friday, Saturday, and Sunday. 1 pm - 4 pm

Loess Hills Hospitality Association

Visitor center with tour guides, information about the Hills, regional art and gifts. Summer Hours: Open Monday – Saturday, 9:30 a.m. to 4 p.m. and Sunday 1 – 4:30 p.m. Winter Hours: Wednesday to Saturday, 1 to 4 p.m.

800-886-5441 or 712-886-5441

www.loesshillstours.com

ONAWA

Casino Omaha

West of town with slots, table games, restaurant, lounge and gift shop. Call 800-858-8238 or 712-423-9646

<http://500nations.com/casinos/iaCasinoOmaha.asp>

Lewis and Clark State Park Visitor Center

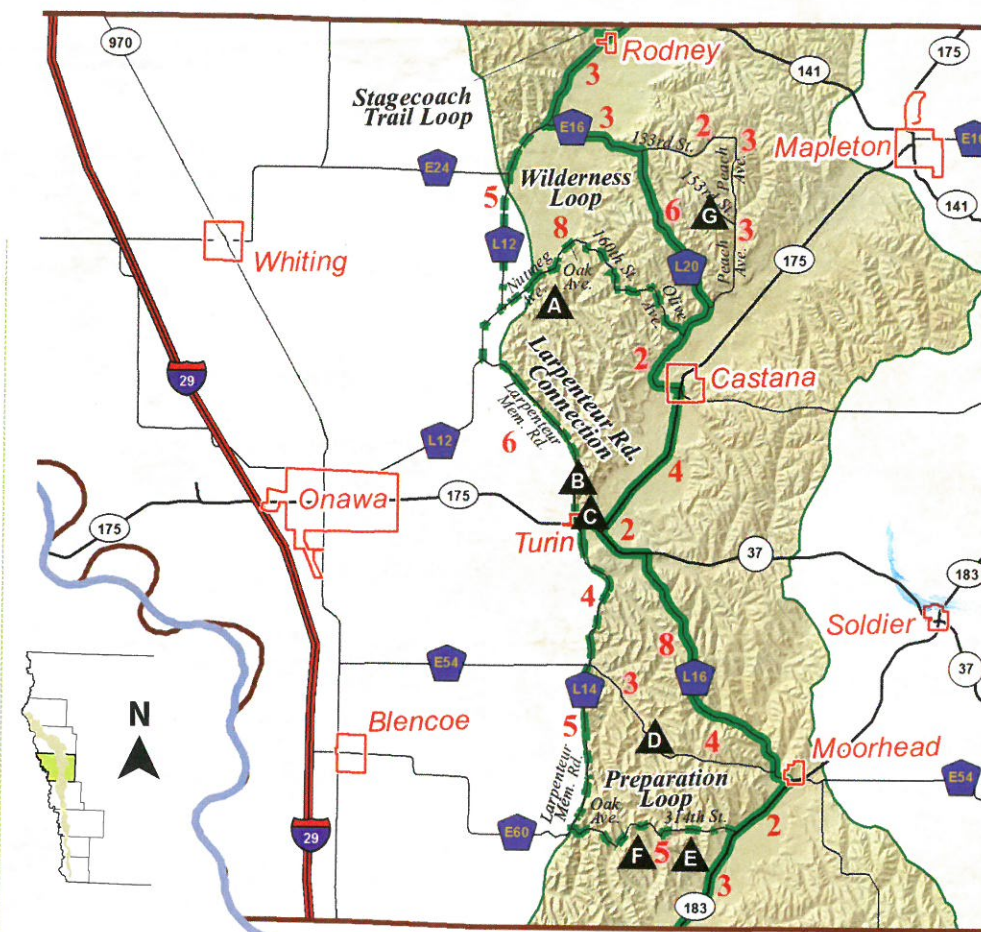
Lewis and Clark used a keelboat to haul most of their supplies up the Missouri River. It was moved by sail, oars, poles and towlines. The replicas of the keelboat and the explorers' smaller boats, called pirogues, which are quartered here were used in the Ken Burns' documentary, "Undaunted Courage." For hours, call 712-423-2829.

www.iowadnr.com/parks/state_park_list/lewis_clark.html

Museum Complex

Three museums are at one site: the Monona County Historical Museum, the Veterans Museum and the Kiwanis Museum which has a collection of historical buildings. The Monona County Arboretum is nearby. Hours vary with each museum. 712-423-2776

www.onawa.com/museum_complex.htm



- ▲ Byway Attraction
- 1 Miles between points
- Scenic Byway Spine
- - - Excursion Loop
- Incorporated Town
- Loess Hills Landform

RED NUMBERS: The county maps show the mileage between various points on the spine. **Area Attractions** listed are other places you might want to visit. These are not on the Byway route but are nearby and are mentioned here. Shaded portions of the maps illustrate the extent of the landform of Iowa's Loess Hills which is determined by where the depth of the loess is greater than 60 feet.

SERVICES AVAILABLE

Castana:	Lodging
Mapleton:	Lodging, Gas, Restaurants, Groceries
Moorhead:	Gas, Restaurant
Onawa:	Lodging, Gas, Restaurants, Groceries, Casino
Turin:	Lodging (RT Reese Cabin, Contact Monona County Conservation 712-433-2400
Whiting:	Gas, Restaurant

FOR MORE INFORMATION

Loess Hills Hospitality Association
800-886-5441 or 712-886-5441
www.loesshillstours.com

Monona County Conservation Board
712-433-2400
www.mononacountyconservation.com

HARRISON



Murray Hill Scenic Overlook, Little Sioux

HARRISON COUNTY



THE BYWAY, north to south

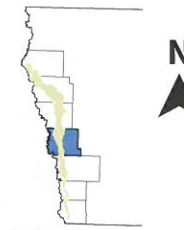
- Enter Harrison County on Iowa Hwy. 183 from the north and pass through Pisgah, home of the Loess Hills State Forest Visitor Center.
- A bit more than 9 miles south of Pisgah, you meet Iowa Hwy. 127 which you take for 11 miles to the east edge of Logan, the county seat.
- At Logan, you turn left (west) on U.S. 30, which was the Lincoln Highway, the first transcontinental highway. As you drive west, you will arrive at the Harrison County Historical Village and Iowa Welcome Center.
- No more than one-half mile beyond the Harrison County Historical Village and Iowa Welcome Center on U.S. 30, turn left onto County Rd. F58 which runs east.
- About 4 miles later, at the junction of County Rd. L34, you turn right (south) to take L34 to the southern county line, about 6 miles away.

EXCURSION LOOPS
Fountainbleu Loop

- Travel about 9 miles as this loop heads west from Pisgah on County Rd. F20 to visit the overlook at Murray Hill.
- After leaving the overlook parking lot, County Rd. F20 meets County Rd. L14 a half-mile later.
- Also called Larpenteur Memorial Road, County Rd. L14 runs along the base of the Hills and turns briefly into the Missouri River valley before meeting Eden Avenue about 3.25 miles later.
- At Eden Avenue turn left (south) for 1.5 miles.
- When you meet 165th Trail, turn left (east) until you reach Geneva Place, just more than 3.75 miles later.
- At Geneva Place, turn right (east) and follow the signs back to Pisgah, about 4.25 miles to the north and east.



Allow about 30 minutes for this drive on paved and gravel roads.

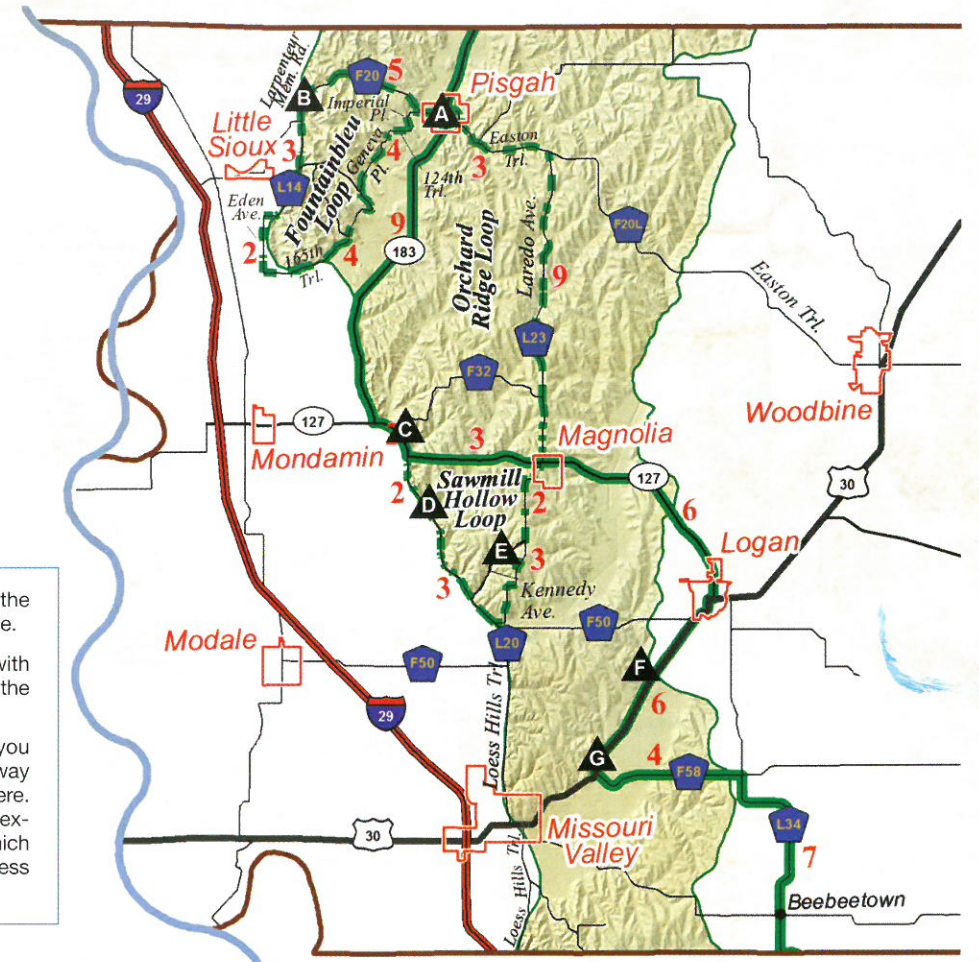


- ▲ Byway Attraction
- 1 Miles between points
- Scenic Byway Spine
- - - Excursion Loop
- Incorporated Town
- Loess Hills Landform

RED NUMBERS: The county maps show the mileage between various points on the spine.

Byway Attractions, indicated by triangles with black letters, are the most closely related to the hills in one manner or another.

Area Attractions listed are other places you might want to visit. These are not on the Byway route but are nearby and are mentioned here. Shaded portions of the maps illustrate the extent of the landform of Iowa's Loess Hills which is determined by where the depth of the loess is greater than 60 feet.



BYWAY ATTRACTIONS

A Loess Hills State Forest Visitor Center

At 206 Polk St. in Pisgah, this nature center relates to the prairie and woods found in the Loess Hills and it also serves as the headquarters of the 11,000-acre Loess Hills State Forest. Open Monday to Friday, 8 a.m. – 4 p.m. From April - October, also open Saturday and Sunday, 1-4 p.m. 712-456-2924 www.iowadnr.gov/Destinations/StateForests

B Murray Hill Scenic Overlook:

This overlook on County Rd. F20 is one of the best in the Hills. Hike up the hill through prairie grasses for better views of the Hills and the Missouri River Valley; interpretive panels are found along the way. This site is not handicapped accessible. www.HarrisonCountyParks.org

C Small's Fruit Farm

One of several orchards in the area near the junction of Iowa Hwy. 127 and County Rd. F32, Small's is where you can pick about 30 varieties of apples, buy various produce, jellies, jams and pies or watch the cider press in season. The Pie Parlor has homemade pies and more. Open: 9 a.m. – 5 p.m. daily in the winter and spring, 8 a.m. – 6 p.m. daily in the summer and fall. 712-646-2723. www.smallsfruitfarm.com

D Loess Hills Lavender Farm

Join us on the farm to walk through the fields, cut your own bouquet, learn more about this mystical herb with so many healing properties. Hours are seasonal, so follow us on Facebook or visit our website to learn more about our farm. 712-642-9016. www.loesshillslavender.com

E Sawmill Hollow Family Farm

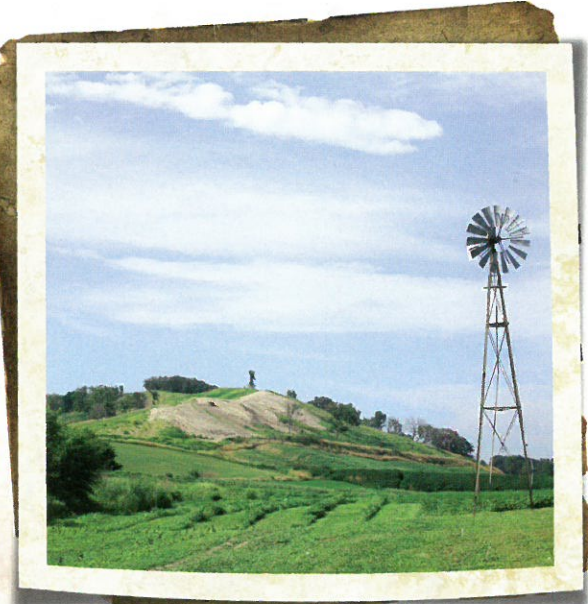
See the first aronia berry farm in North America with products that include premium aronia berry wines and gourmet aronia berry food items. Aronia Festival 3rd weekend in September. Open May 1 to October 31, Thursday to Sunday, 11 a.m. – 6 p.m. 712-648-2432. www.sawmillhollow.com

F Museum of the Religious Arts

Judeo/Christian artifacts and artworks including the King of Kings exhibit depicting the life of Christ in life size wax figures and Akiane Kramarik's art gallery. "Reason for the Season" early November thru early January. Open: 10 a.m. - 4 p.m., Tuesday to Saturday and noon – 4 p.m., Sundays. Closed major holidays. 712-644-3888. www.mrarts.org

G Harrison County Historical Village and Iowa Welcome Center

Loess Hills National Scenic Byway Information Portal with access to Byway guides, 24/7. Overlooking 3 byways the facility includes historical buildings, Iowa gift center, Lincoln Highway/ Loess Hills Interpretive Center, outdoor transportation play area, public restrooms, and free cherry drink. Open: 9 a.m. – 5 p.m., Monday to Saturday and noon – 5 p.m., Sundays. 712-642-2114. www.HarrisonCountyParks.org/welcome



Loess Hills Lavender Farm, Missouri Valley.
Photo courtesy of Jean Martin

EXCURSION LOOPS
Orchard Ridge Loop

- Travel nearly 12 miles on this loop which goes east of Pisgah on County Rd. F20 and then south on County Rd. L23 through gently rolling hills to Magnolia where you rejoin the Byway Spine.

Allow about 20 minutes drive time on paved roads.

Sawmill Hollow Loop

- On this route, which starts where County Rd. L20 departs south from Iowa Hwy. 127, you follow an 1850's stagecoach route, now an 11-mile journey. County Rd. L20 runs along the base of the Hills, before entering the Hills for nearly 6 miles until you meet County Rd. L23
- At County Rd. L23, head north to Magnolia where you rejoin the Byway's Spine.
- Although the route is entirely paved, you can also visit Sawmill Hollow which is accessed off County Rd. L20 by a low-maintenance "B" road that is well marked; caution is urged.

Allow about 20 minutes drive time.



Harrison County Historical Village & Welcome Center, Missouri Valley

★ **AREA ATTRACTIONS**

DUNLAP

Dunham Stock Farm Barn Built in 1857, this barn is a historic landmark; open by appointment. 712-643-5721.

McCleam Museum and Dougal House

See an old Booster Buck, a square grand piano and many antique farm items. Open by appointment. 712-643-5721.

MISSOURI VALLEY

DeSoto National Wildlife Refuge

Located 5 miles west of I-29. About 500,000 snow geese visit here each November and the visitor center exhibits artifacts recovered from the steamboat Bertrand which sank here in 1865 and was discovered a century later. Visitor Center hours: 9 a.m. – 4:30 p.m. daily except federal holidays. 712-388-4800. www.fws.gov/refuge/desoto

Watson Steam Train

A restored coal-fired miniature steam train that gives kids and those young-at-heart rides around 1,800 feet of track. Inside the depot/museum are several collections including 160 brass replicas of every Union

Pacific engine ever built and a refurbished motorcar are displayed. Open: May thru October, 10 a.m. – 6 p.m. Saturday, Noon to 5 p.m. Sunday. 712-642-2210. www.missourivalleychamber.com

Wisecup Farm Museum

This museum features a large collection of Minneapolis-Moline tractors and equipment, as well as other antique tools, buggies and a sleigh. Country Western Music Festival in late August. Open: Memorial Day Weekend thru September, 9 a.m. – 5 p.m. Saturday, 1 p.m. – 5 p.m. Sunday and Tuesday. 712-642-3925 www.wisecupfarmmuseum.com

Wilson Island State Recreation Area

Here you will find 544 acres of state land next to the Missouri River, with dense cottonwood groves sheltering tent and RV campgrounds plus a cabin; recently upgraded and adjacent to DeSoto National Wildlife Refuge. 712-642-2069 www.iowadnr.gov/Destinations/StateParksRecAreas/IowasStateParks

WOODBINE

Brick Street Brewing Company
506 Walker St., Ste. B, Woodbine, IA
712-592-1894
www.brickstreetbrewing.com

Eby Drug

A 1950s-style soda fountain in downtown. 712-647-2840

Lincoln Highway

One of the longest sections of original brick road with sign posts; in the city. www.iowalincolnhighway.org

Willow Lake Recreation Area

A year-round facility with campground, cabins, fishing and beach. 712-647-2785 www.HarrisonCountyParks.org

SERVICES AVAILABLE

- Beebeetown:** Restaurant
- Dunlap:** B&B's, Gas, Groceries, Restaurants
- Little Sioux:** Gas
- Logan:** B&B, Gas, Groceries, Lodging, Restaurants
- Missouri Valley:** Groceries, Lodging, Restaurants, Gas
- Modale:** Gas, Restaurant
- Mondamin:** Gas
- Persia:** Restaurants, Gas
- Pisgah:** B & B, Gas, Restaurants
- Woodbine:** Gas, Groceries, Lodging, Restaurants

FOR MORE INFORMATION

Harrison County Conservation Board
712-647-2785
www.HarrisonCountyParks.org

Harrison County Historical Village and Iowa Welcome Center
712-642-2114
www.HarrisonCountyParks.org/welcome



Willow Lake Recreation Area, Woodbine

POTTAWATTAMIE



Hitchcock Nature Center, Honey Creek.
Photo courtesy of Brian Peterson.

POTTAWATTAMIE COUNTY



THE BYWAY, north to south

- Enter northern Pottawattamie County on County Rd. L34 which passes under I-680 and continues south with horizon-to-horizon views of farm fields that seem to roll away from the Byway.
- Nearly 14 miles later, when the Byway meets County Rd. G81, you should turn right (south) to follow that for 3.5 miles to U.S. 6 which leads into Council Bluffs.
- At U.S. 6, turn right (east) to go to S. 7th St. (Iowa Hwy. 192), a one-way street going south to the South Expressway which passes under I-29/80 to meet the Veteran's Memorial Highway, 3 miles later.

- At the Veteran's Memorial Highway (also called Iowa Hwy. 92 and 275), you turn left (east) to pass over I-29 and then, less than 2 miles after leaving the South Expressway, meet Harry Langdon Blvd.
- At Harry Langdon Blvd., turn right (south). On your left is the Iowa School for the Deaf. Shortly afterward, the boulevard becomes Wabash Ave. and then County Rd. L35 which, for just more than 6 miles, leads you along the base of the Hills and sometimes rides high enough on their flanks to provide vistas of the Missouri River valley before you exit the county.

EXCURSION LOOPS

Hitchcock Loop

- This 27-mile loop on paved and gravel roads begins by going west on I-680 from its intersection with County Rd. L34. On the way, visit the I-680 Scenic Overlook, one of the best places to view the Hills and the floodplain of the Missouri River.
- When you reach I-29, turn north and exit immediately at Exit 72 to go into the small community of Loveland.
- In Loveland, turn right (south) to take County Rd. L20 which runs along the edge of the floodplain to Honey Creek where you re-enter the Hills. Less than 2 miles south of the small community of Honey Creek is the entrance to the Hitchcock Nature Center. Continuing south on County Rd. L20, you will meet County Rd. L36 about three-quarters mile away.
- At County Rd. L36, also called Coldwater Avenue, turn left (northeast) and follow this gravel road that winds its way through the Hills to return you to County Rd. L34 near the loop's start, about 8 miles away.

Allow about 40 minutes for this drive on paved and gravel roads.



Monarch Tagging at Hitchcock Nature Center

BYWAY ATTRACTIONS

A Hitchcock Nature Center

27792 Ski Hill Loop, Honey Creek, IA, (712) 545-3283
Located 5 miles north of Crescent this 1,300 acre preserve features the Loess Hills Lodge interpretive facility with exhibits and programs for the whole family. The 45' observation tower gives visitors a 360-degree view of the Loess Hills and is home to the Hitchcock HawkWatch, one of the top 25 Hawk Watch stations in North America. Nearly 13 miles of hiking trails feature restored native prairie and woodland scenery with picturesque views of the Loess Hills. The park also boasts a 1/2 mile elevated handicapped-accessible boardwalk, a tent & RV campground, camping cabins and "primitive campsites" for those who want to get away from it all. Park hours are 6 a.m. to 10 p.m. daily all year. Loess Hills Lodge Hours are March through November: Tuesday through Saturday - 9 a.m. to 5 p.m. and Sunday - 1 p.m. to 5 p.m. December through February: Friday & Saturday - 9 a.m. to 5 p.m. and Sunday - 1 p.m. to 5 p.m. www.pottcoconservation.com

B Kanesville Tabernacle

222 E. Broadway, Council Bluffs, (712) 322-0500
This authentic replica log tabernacle was built and dedicated in 1996, near the site where Brigham Young was sustained president by the members of the Church of Jesus Christ of Latter-day Saints in 1846. The tabernacle now serves as a visitor center where guests can learn more about the epic history of the Latter-day Saints' migration westward. Open 9:30 a.m. - 7 p.m., daily, April to September and 10 a.m. - 5 p.m. daily, October to March. www.lds.org/locations/kanesville-tabernacle

C Bayliss Park

1st Avenue and Pearl Street, Council Bluffs, (712) 328-4650
This downtown green space is a hub for family activity. The park includes a fountain, performance space, veterans memorials, an interactive water feature with child activated sprays and child friendly touchable art. www.councilbluffs-ia.gov/?nid=259

D Union Pacific Railroad Museum

200 Pearl St., Council Bluffs, (712) 329-8307
Visit the Union Pacific Railroad Museum to experience "Building America", an immersive exhibit featuring video-game technology; relive the height of passenger rail travel; and learn how Union Pacific and America's progress have been inextricably linked. Housed in the former 1902 Carnegie Library, this museum is home to one of the oldest corporate collections in the nation and includes artifacts, photographs and documents that trace the development of the transcontinental railroad and the American West. Open 10 a.m. - 4 p.m., Tuesday to Saturday. www.uprrmuseum.org



Above: Bob Kerry Pedestrian Bridge, Council Bluffs.
Left: Hitchcock Nature Center, Honey Creek

E Historic Squirrel Cage Jail

226 Pearl St. Council Bluffs, (712) 323-2509
In this 1885 revolving jail, the cells turned to allow viewing of all cells from one vantage point. One of only three left in the nation, the jail was one of 18 revolving jails built and has the distinction of being the only 3 story revolving jail. Named to the National Register of Historic Places the building now houses a collection outlining the history of Council Bluffs. Open 10 a.m. - 4 p.m., Wednesday to Saturday, 1-4 p.m. Sunday, April to October. www.thehistoricalsociety.org/Jail.htm

F Historic General Dodge House & August Beresheim House

605 3rd St. Council Bluffs, (712) 322-2406
Built in 1869 for Civil War general and transcontinental railroad builder Grenville Dodge, this National Historic Landmark remains the city's architectural showpiece. The 14 room, 3 story mansion displays architectural features such as parquet floors, cherry, walnut and butternut woodwork, and a number of "modern" conveniences quite unusual for the time period. Four blocks east of the Byway. Open 10 a.m. - 5 pm., Tuesday to Saturday, 1-5 p.m. Sundays. Closed January and holidays. www.dodgehouse.org

G RailsWest Railroad Museum

16th Avenue and South Main, Council Bluffs, (712) 323-5182
Housed in the former Rock Island depot this museum features Railroad memorabilia including dining car silverware, a telegraph office, uniforms and ticket stubs. Visit the former freight section of the depot and view a large collection of rolling stock and locomotives outside. Open 10 a.m. - 4 p.m., Tuesday to Saturday, 1-4 p.m. Sunday, Closed holidays and the month of January. www.thehistoricalsociety.org/Depot.htm



Big Lake Park, Council Bluffs

BYWAY ATTRACTIONS

▲ Tom Hanafan River's Edge Park & Bob Kerry Pedestrian Bridge

North 40th Street and Avenue B in Council Bluffs, (712) 328-4650
The Tom Hanafan River's Edge Park is a public access green space along the scenic Missouri River. Its public use green space is a venue for an assortment of community events and is the Iowa gateway to the Bob Kerry Pedestrian Bridge, the longest pedestrian bridge to link two states. This architectural marvel, completed in 2008 is 3000 feet long with two main pylons rising 210 feet in the air. Walk this scenic route and get a bird's eye view of the Missouri River from 60 feet above. Admission is free. www.councilbluffs-ia.gov/index.aspx?NID=843

▲ Wabash Trace Nature Trail & Iowa West Foundation Trailhead Park

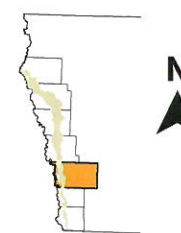
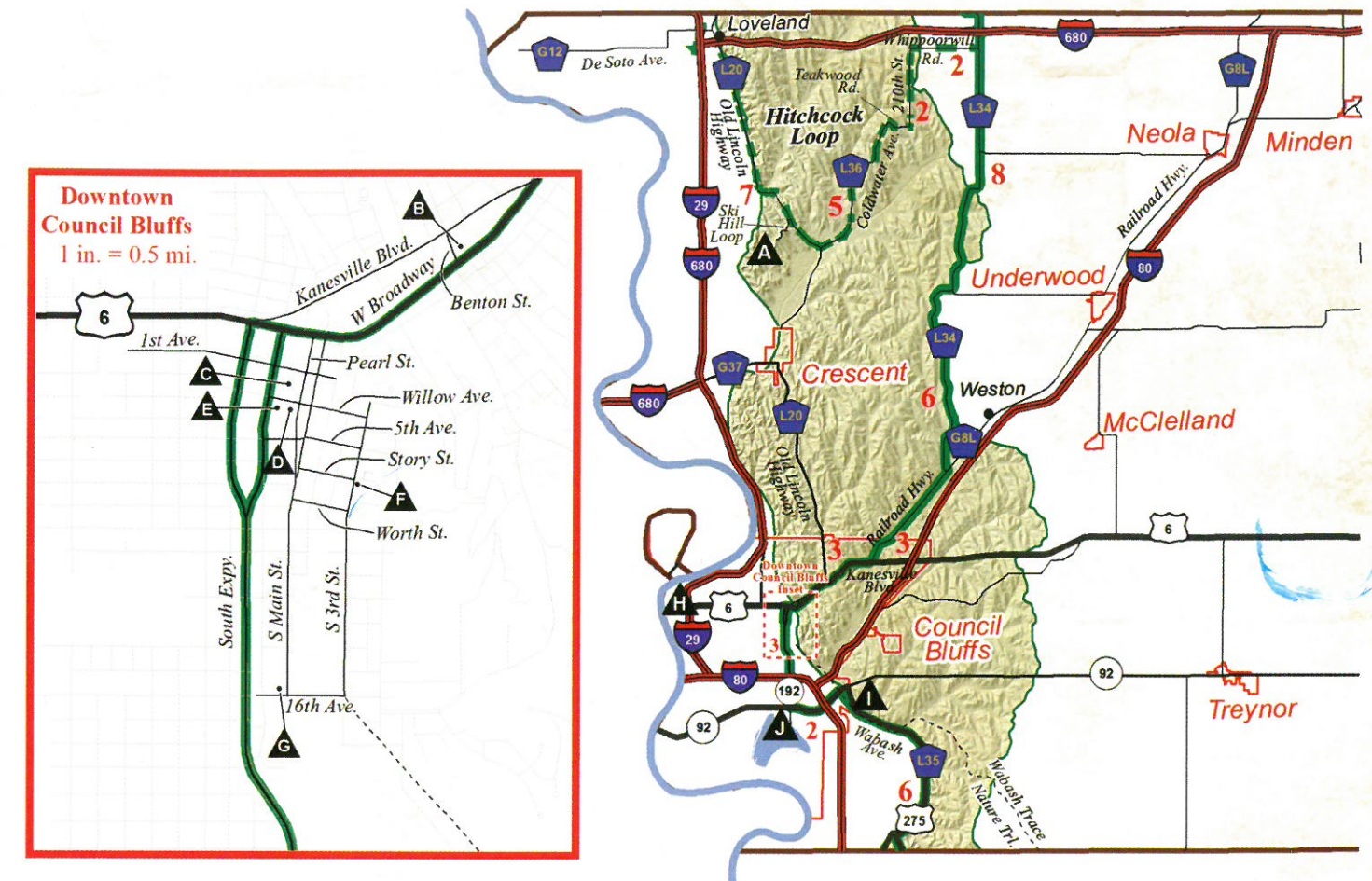
14151 Wabash Avenue, Council Bluffs, (712) 328-4650
Listed among the nation's top ten trails by Mountain Biking magazine, this 62-mile-long trail is a converted railroad right of way that runs from Council Bluffs on the north to Blanchard on the Iowa/Missouri border. Accessible from numerous towns the trail offers a journey through the scenic Iowa countryside and is open to biking, hiking, cross country skiing and features equestrian trails that parallel parts of the original trail. www.wabashtrace.org

▲ Lake Manawa State Park

1100 South Shore Drive, Council Bluffs, (712) 366-0220
One of the most popular outdoor recreation destinations in the Omaha/Council Bluffs metro area; facilities include a swim beach, playground, camping, trails and picnic shelters. Visitors can bike, fish, boat and swim in this 1,592 acre park. www.stateparks.com/lake_manawa.html

COUNCIL BLUFFS

Centrally located in the Loess Hills, the community was called Kanesville when Mormons stopped here on their way west in the 1840s. In 1853, as hundreds of thousands of gold rushers and pioneers later made the city a crossroads to the west, it was renamed Council Bluffs, reflecting the title given the region by Lewis and Clark in 1804.



- ▲ Byway Attraction
- 1 Miles between points
- Scenic Byway Spine
- - - Excursion Loop
- Incorporated Town
- Loess Hills Landform

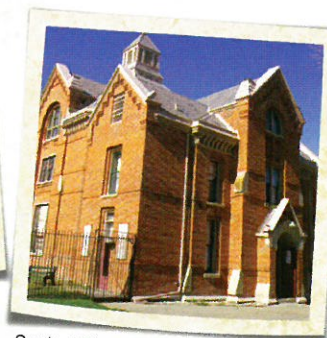
RED NUMBERS: The county maps show the mileage between various points on the spine.

Byway Attractions, indicated by triangles with black letters, are the most closely related to the hills in one manner or another.

Area Attractions listed are other places you might want to visit. These are not on the Byway route but are nearby and are mentioned here. Shaded portions of the maps illustrate the extent of the landform of Iowa's Loess Hills which is determined by where the depth of the loess is greater than 60 feet.



Union Pacific Railroad Museum, Council Bluffs



Squirrel Cage Jail, Council Bluffs



General Dodge House, Council Bluffs

★ AREA ATTRACTIONS

COUNCIL BLUFFS

Lewis & Clark Monument Scenic Overlook
(712) 328-4650
www.councilbluffs-ia.gov/index.aspx?NID=275

Fairview Cemetery, Ruth Anne Dodge Memorial, Kinsman Monument & Lincoln Monument
(712) 328-4650
www.councilbluffs-ia.gov/index.aspx?NID=265

Children's Square
(712) 322-3700
www.childressquare.org

Ameristar Casino
(866) 667-3386 or (712) 328-8888
www.ameristar.com/Council_Bluffs.aspx

Harrah's
(712) 329-6000
www.harrahscouncilbluffs.com

Horseshoe Casino
(712) 323-2500
www.horseshoecouncilbluffs.com

Great Plains Wing Commemorative Air Force Museum
Council Bluffs Airport
(712) 322-2435
www.greatplainswing.org

Ditmars Orchard
(712) 256-7053
www.ditmarsorchard.com

Western Historic Trails Center & Iowa Welcome Center
(712) 366-4900
www.iowahistory.org/historic-sites/western-historic-trails

SERVICES AVAILABLE

- Loveland:** Gas
- Honey Creek:** Restaurant, Camping
- Crescent:** B & B, Gas, Restaurants, Groceries
- Council Bluffs:** Lodging, B & Bs, Gas, Groceries, Restaurants, Casinos, Shopping, Camping, Multi-use Trails, Wabash Trace Trailhead, Bike Rental, Lodging
- Hancock:** canoe rental, camping
- Neola:** Gas, Restaurant, Groceries, Camping

Prairie Hawk Vineyards & Winery
(712) 256-6770
www.phwine.com

CRESCENT
Loess Hills Vineyard and Winery
(712) 545-3850 or (712) 545-3054
www.loesshillsvineyardandwinery.com

Mt. Crescent Ski Area
(712) 545-3850
www.skicrescent.com

Doe's and Divas Inc.
(402) 594-5111
www.doesanddivas.com

Seasonal or by Appointment:
Honey Creek Creamery
(402) 690-9252
www.honeycreekcreamery.com

Loess Hills Woodworks
(712) 545-4455
www.loesshillswoodworks.com

MINDEN
Breezy Hills Vineyard and Winery
(712) 485-2083
www.breezyhills.com

OAKLAND
Big Grove Village (712) 482-6840
www.biggrove.com



- Underwood:** Lodging, Gas, Restaurant
- Treynor:** Gas, Restaurant, Groceries
- Avoca:** Lodging, Gas, Groceries, Camping
- Walnut:** Lodging, Gas, Groceries

SHELBY

Carstens 1880 Farmstead
(712) 544-2341
www.carstensfarm.com

TREYNOR
J Prairie Crossing Vineyard and Winery
(712) 487-3812
www.prairiecrossingwine.com

WALNUT
Walnut, Iowa's Antique City
www.iowasantiquecity.com

OMAHA, NE
A Henry Doorly Zoo
(402) 733-8401
www.omahazoo.com

Durham Museum
(402) 444-5071
www.durhammuseum.org

Joslyn Art Museum
(402) 342-3300
www.joslyn.org

Lauritzen Gardens
(402) 346-4002
www.lauritzengardens.org

Omaha Children's Museum
(402) 342-6164
www.ocm.org

i FOR MORE INFORMATION

Council Bluffs Convention and Visitors Bureau
(800) 228-6878 Ext. 134
www.travelcouncilbluffs.com

Pottawattamie County Conservation Board
Camp, Hike, Explore (712) 328-5638
www.pottcoconservation.com

Iowa Welcome Center, Underwood
(515) 239-1101
www.iowadot.gov/maintenance/rest_areas/Underwood/index.html

Council Bluffs Parks & Recreation
(712) 328-4650
www.councilbluffsia.gov/index.aspx?nid=253

MILLS



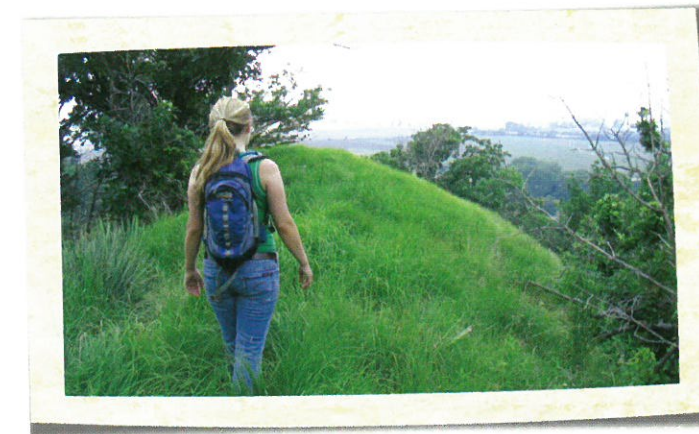
Folsom Point Preserve, Mills County. Photo courtesy of Blake Mayberry.

MILLS COUNTY



THE BYWAY, north to south

- Enter Mills County on County Rd. L35, also called 221st St. When the Byway enters the county, you leave the valley of the Missouri River and travel through the range's western front to Glenwood where the Byway becomes Locust Street.
- Continue south through Glenwood until you reach U.S. 34.
- Head east on U.S. 34 for a bit more than 4 miles.
- Upon meeting U.S. 275, turn right (south) and follow the highway to the county's southern border, about 9 miles away.



West Oak Forest, Mills County. Photo courtesy of Blake Mayberry

EXCURSION LOOPS

Pony Creek Loop

- This 9-mile route starts about 5 miles north of downtown Glenwood by leaving 221st St. at Deacon Ave. and then rambles through the Loess Hills to the west and south.
- Along the way, you meet Pony Creek Park.
- Afterward you come to U.S. 34 which you take to the east to rejoin the Byway just south of Glenwood.



Allow about 18 minutes drive time on part paved and part graveled surfaces.

Waubonsie Loop

- This 12-mile route starts where County Rd. L45 (also called Levi Rd.) takes you south from U.S. 34 just southeast of Glenwood to go along the base of the Hills and then into the Hills. Expect lots of turns.
- About 8 miles from the start of this route, turn left (east) onto Quandt Rd., another road that winds around for almost 3 more miles before you rejoin County Rd. L45.
- At County Rd. L45, turn left (east) and follow County Rd. L45 for 1.5 miles to meet the Byway's Spine at U.S. 275 about a mile north of Tabor.
- Along the way is the picturesque countryside Waubonsie Church.



Allow about 30 minutes drive time on paved and graveled surfaces.

BYWAY ATTRactions

A Salem Lutheran Church
 Located less than 2 miles east of 221st St. on Ashton Rd. (the first gravel road to the east of the highway south of the Mills-Pottawattamie County line), this simple rural church was built in 1867 by German immigrants, making it one of western Iowa's oldest buildings. Drive carefully on this winding gravel road.

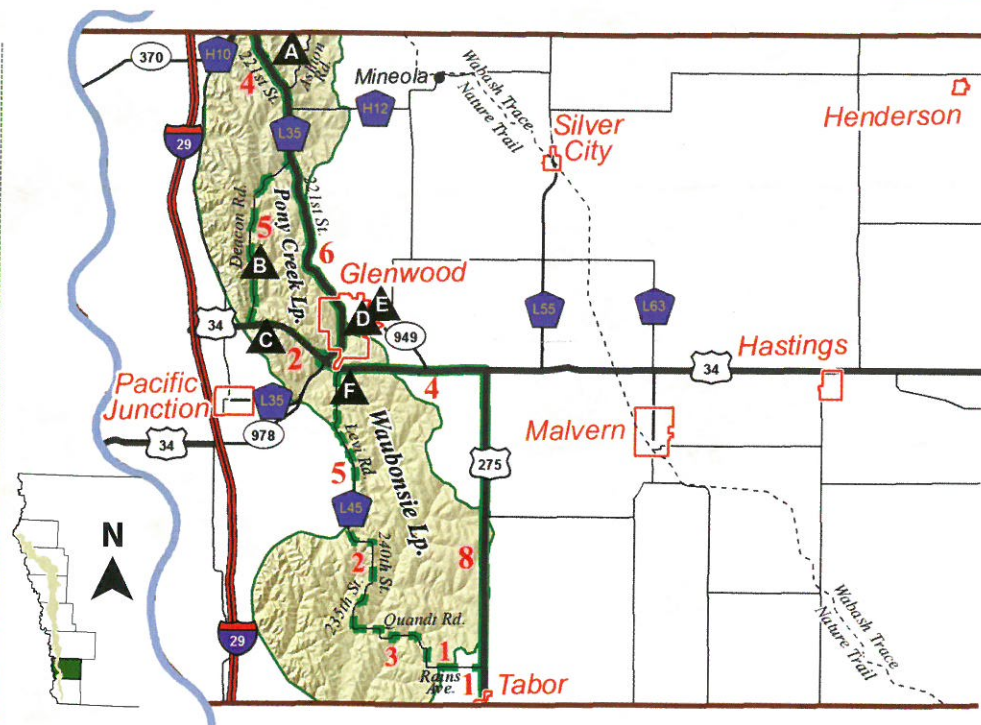
B Pony Creek Park
 Northwest of Glenwood on Deacon Road, the park has an 82-acre lake, fishing, hiking trails, picnicking and seven campsites. 712-527-9685.
www.millscoia.us/consboard/consmap.html

C Mile Hill Lake
 Off eastbound U.S. 34 southwest of Glenwood this county park has an overlook and interpretive panels and is a quiet place to cast a line into the 10-acre lake. 712-527-9685
www.millscoia.us/consboard/consmap.html

D Glenwood Lake Park
 East of downtown Glenwood, this park has a pond with waterfowl, playground and the 750-seat, open-air Davies Amphitheater which has live performances on summer weekends for nominal admissions. Call 712-527-3334. Also in the park is the Mills County Historical Museum which has historical buildings and artifacts of the Glenwood Culture Nebraska Phase Native Americans. Open Saturday and Sunday 1-4 p.m. May - September. 712-527-5038
www.glenwoodnet.com/davies.html

E Indian Earth Lodge
 North of Glenwood Lake Park, this replica of a grass-covered earth lodge used by area Indians AD 950 - 1300 shows how they lived on the plains. For a tour, stop at the Mills County Historical Museum at Glenwood Lake Park. 712-527-5038.

F Foothills Park
 Off U.S. 34 at Levi Rd., near the northern end of the Waubonsie Loop, this park has 3 miles of walking trails. 712-527-9685.



▲ Byway Attraction **— Scenic Byway Spine** **□ Incorporated Town**
1 Miles between points **- - - Excursion Loop** **■ Loess Hills Landform**

RED NUMBERS: The county maps show the mileage between various points on the spine.

Byway Attractions, indicated by triangles with black letters, are the most closely related to the hills in one manner or another.

Area Attractions listed are other places you might want to visit. These are not on the Byway route but are nearby and are mentioned here. Shaded portions of the maps illustrate the extent of the landform of Iowa's Loess Hills which is determined by where the depth of the loess is greater than 60 feet.

★ AREA ATTRactions

GLENWOOD
Keg Creek Brewing Co.
 111 Sharp St., Glenwood, IA
 712-520-9029
www.kegcrekbrewing.com

Kings Crossing Vineyard and Winery
 53086 260th St. northeast of Glenwood
 712-527-2873
www.kingscrossingvineyard.com

Vine Street Cellars
 17 N Vine St., Glenwood, IA
 712-525-9463
www.vinestreetcellars.com

West Oak Forest
 Northwest of Glenwood on County Rd. L31, this county park has trails leading through heavy woods and grassy hilltops.
 712-527-9685
www.millscoia.us/consboard/consmap.html

SERVICES AVAILABLE

Glenwood: Lodging, Gas, Restaurants, Groceries
Malvern: B&B, Wabash Trace Trailhead
Mineola: Restaurant, Wabash Trace Nature Trail Trailhead
Pacific Junction: Lodging, B&B, Gas, Restaurant
Silver City: Restaurant, Wabash Trace Nature Trail

FOR MORE INFORMATION

Glenwood Chamber of Commerce
 712-527-3298
www.glenwoodia.com

Mills County Conservation Board
 712-527-9685
www.millscoia.us/consboard/consmap.html



FREMONT COUNTY



THE BYWAY, north to south

- Enter Fremont County on U.S. 275 which leads through Tabor until its junction with County Rd. J18.
- At County Rd. J18, turn right (west) to go through the Hills. About 6 miles later, you will meet County Rd. J24.
- At County Rd. J24, turn right to enter Thurman.
- In Thurman, watch for Washington Street and turn left (south) onto that street. Just outside of town, Washington St. becomes County Rd. L44, also called Bluff Rd. and this will lead you along the base of the Hills on the eastern edge of the valley of the Missouri River.
- About 17 miles after beginning your journey on L44, you enter Hamburg where the route becomes the city's main thoroughfare, E Street. E Street takes you to the east side of Hamburg where you meet U.S. 275 again and continue going straight (east).
- The last length of your drive on the Loess Hills National Scenic Byway leads you across the Nishnabotna River.
- Soon, you and U.S. 275 turn right to go to Iowa's southern border, just over a mile away, with a ridge of the Loess Hills on your left and the Nishnabotna on your right.

EXCURSION LOOPS

Pleasant Overview Loop

- This paved, 20-mile loop takes you east from the Spine toward Sidney on County Rd. J34, also called Knox Rd. Note that just after you get on County Rd. J34, if you take the first gravel road to your left (north), you'll end up at an old cemetery which provides a beautiful overlook of some of the Loess Hills.
- On County Rd. J34, you will wind through the Hills to meet U.S. 275 in the southern part of Sidney.
- Turn left (north) onto Main St. which soon veers to the right around the county courthouse as Indiana St.
- At the far side of the square, you turn right at Filmore St., which is also Iowa Hwy. 2. This leads you out of the Hills onto the flats created by the West and East Nishnabotna Rivers.
- About 5 miles out of Sidney, you turn south on County Rd. L68 to the Riverton Wildlife Area, less than 4 miles south of Iowa Hwy. 2. Bring binoculars to watch the birds.
- In the town of Riverton, turn right (west) onto K St., which is also County Rd. J46.
- Upon intersecting U.S. 275 4.5 miles later, you go straight onto what is now Iowa Hwy. 2. In less than two miles you will see the entrance to Waubonsie- Wa-Shaw- Tee State Park and, a mile past that, you rejoin the Spine of the Byway on County Rd. L44 which is also called Bluff Rd.

Allow about 35 minutes drive time on this paved route.



Above: Waubonsie State Park, Hamburg

EXCURSION LOOP
Spring Valley Loop

- This 3-mile route on gravel leads you through cuts in the Hills before rejoining the Byway Spine. Some caves and brick-faced cellars can be seen as well as some stone outcroppings, a rarity in the Loess Hills.
- You begin this loop by turning left (east) from County Rd. L44 onto 222nd St. which is less than a half mile south of County Rd. J34, the beginning of the Pleasant Overview Loop. At 270th Avenue, you turn right (south) and the avenue will lead you back to County Rd. L44, the Byway Spine, shortly.

You will probably spend less than 10 minutes on this short drive on gravel surface.

★ AREA ATTRACTIONS

Hillside Orchard
North of town. Fresh fruit and berries in season, coffee shop with homemade pies and noon lunch. Farmers market, (summer) on Fridays 5:30 -8 p.m. 712-382-1277

Mincer Orchard
Established in 1864, it's the oldest operating orchard in Fremont County, with a roadside market offering homegrown fruits and cider near Waubonsie-Wa-Shaw-Tee State Park. 712-382-1014

Stoner Drug
A soda fountain on Main Street where you can order a "fried egg sundae" which really is all ice cream, and lots of other cool treats. 712-382-2551

PERCIVAL
Southern Loess Hills Interpretive/Iowa Welcome Center
2083 Crossroads Dr., which is northwest of the I-29 and Iowa Hwy. 2 interchange (Exit 10 on I-29), this center educates visitors about the Hills with hands-on exhibits and provides information to those driving the Byway and Iowa. Open 10 a.m. - 4 p.m. Monday to Saturday and noon - 4 p.m. Sundays. 515-999-5905

RANDOLPH
Ferrel House Museum
An 1871, 14-room Italianate house with original furnishings. Tours by appointment. 712-625-4411

RIVERTON
State's oldest Chautauqua building, located south of Summer Avenue, and on the National Register of Historic Places.

SIDNEY
Fremont County Historical Museum
Features Indian artifacts, one-room school, farm implements, period rooms and rodeo history. A historical church called The Gathering Place has been restored for conferences and performing arts events. Open summer weekends and by appointment. 712-374-2335

Penn Drug
In the same family since the Civil War and still pumping cold treats at the soda fountain; fresh squeezed lemonade too. 712-374-2513

THURMAN
Skyline Sportsman's Club
East of Thurman, a pheasant and quail hunting preserve and lodge with overnight rooms and guided hunts. The restaurant has a limited menu, Wednesday to Friday evenings. www.skylinehunting.net/skylinehunting

BYWAY
ATTRACTIONS

A Todd House Museum
Built in 1853 in Tabor, this parsonage was a stop on the Underground Railroad and an arsenal for abolitionists. It's two blocks west of the Byway near the city park on Center St. Open by appointment. 712-629-2675 www.taboriawahistoricalsociety.org

B Sugar Clay Winery
1446 240th Ave., northeast of Thurman, vineyard and winery. 712-628-2020 www.sugarclaywinery.com

C Riverton Wildlife Area
West of Riverton, this region is a favorite stopover for migrating waterfowl, particularly during late November and December. 712-374-3133

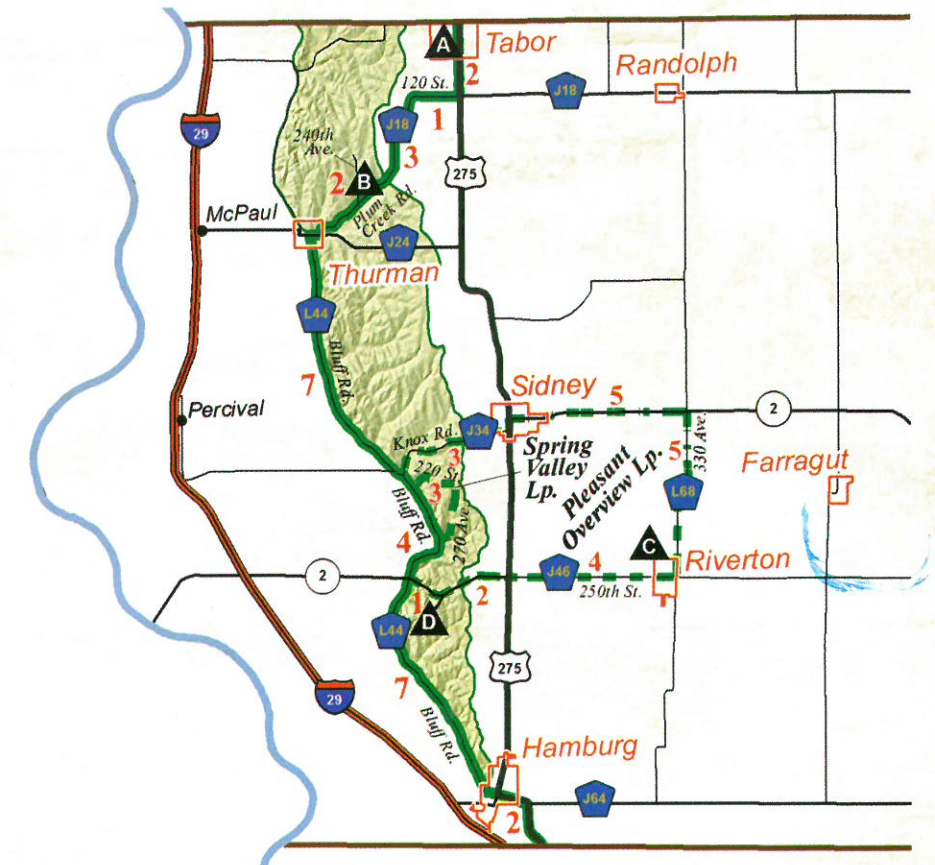
D Waubonsie/Wa-Shaw-Tee State Park
Known for its exceptional fall colors and overlooks, this 1,992-acre park southwest of Sidney has trails for hikers, bicyclists and horseback riders, shelters and campsites for RVs, tents and horse enthusiasts. The park expanded with the recent addition of Camp Wa-Shaw-Tee which includes rental cabins, a lodge and a lake for fishing. 712-382-2786. www.iowadnr.com/parks/state_park_list/waubonsie.html

SERVICES AVAILABLE

Farragut: Gas, Restaurant
Hamburg: Lodging, Gas, Restaurant, Groceries
Imogene: Restaurant, Wabash Trace Trailhead
Riverton: Gas, Groceries, Restaurant

FOR MORE INFORMATION

Sidney: Gas, Restaurant, Groceries
Tabor: Gas, Restaurant, Groceries
Hamburg City Hall, 712-382-1313
Southern Loess Hills Interpretive Center 515-999-5905
Sidney City Hall, 712-374-2223
Tabor City Hall, 712-629-2295



- Byway Attraction
- Miles between points
- Scenic Byway Spine
- Excursion Loop
- Incorporated Town
- Loess Hills Landform

RED NUMBERS: The county maps show the mileage between various points on the spine. Area Attractions listed are other places you might want to visit. These are not on the Byway route but are nearby and are mentioned here. Shaded portions of the maps illustrate the extent of the landform of Iowa's Loess Hills which is determined by where the depth of the loess is greater than 60 feet. Byway Attractions, indicated by triangles with black letters, are the most closely related to the hills in one manner or another.



LOESS HILLS Land Management

Occasionally you may see some burned areas in the Loess Hills but don't worry. Things are okay. In many parts of the country, fire is unwelcome but in the Loess Hills, fire is sometimes good.

Prescribed burns – fires that are intentionally set and tightly controlled – help the Loess Hills in various ways. They push encroaching woods back from parcels of prairie. They encourage warm season grasses to grow and stimulate the reproduction of various plants depending on the time of year a fire is set. And last but not least, prescribed burns reduce undergrowth that, if left unburned, can fuel an uncontrolled fire.

For centuries, wildfires cleansed Iowa's prairie of woodland plants and trees but the presence of European-American civilization in the last 150 years has stifled the wildfires. Thus, to keep the remaining prairie vibrant, trained crews create prescribed burns to do what the wildfires did.

Noting wind speed and direction, humidity, air temperature and dryness of vegetation, the fire crews set fire to areas only on days when the conditions are right so the fire can be controlled and so the crews can accomplish specific ecological objectives. Proximity to houses, businesses and roads is considered too.



Each year, between 5,000 and 10,000 acres are burned in the 640,000 – acre landform of the Loess Hills.

Besides using prescribed burns, crews also cut encroaching woody plants from the Hills as another way to preserve the original prairie habitat.

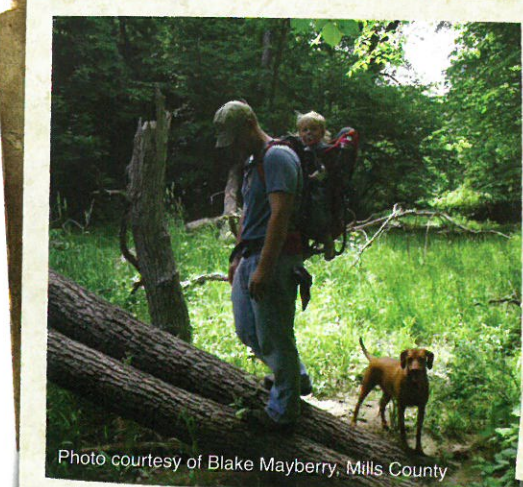


Photo courtesy of Blake Mayberry, Mills County



Five Ridge Prairie County Park, Plymouth County

GETAWAY

Accommodations in the LOESS HILLS

AKRON

- Crow's Nest B&B 712-568-3158
- Five Ridge Prairie Cabin 712-947-4270

AVOCA

- Avoca Motel 712-343-6378
- Capri Motel 712-343-6301
<http://caprimotelavoca.magnusonhotels.com>
- Motel 6, Avoca 712-343-6507 or 800-466-8356
www.motel6.com

CARTER LAKE

- Country Inn Suites 712-347-5600 or 800-830-5222
www.countryinns.com
- Holiday Inn Express 712-515-4900 or 888-465-4329
www.hiexpress.com/omahaairport
- LaQuinta 712-347-6595 or 800-753-3757
www.laquinta.com
- Super 8 Motel 712-347-5588 or 800-454-3213
www.super8.com

CASTANA

- Brink Farm & Vacation 712-433-3903
www.iowafarmvacation.com
- The Dormitory Inn 712-353-6797
www.dormitoryinn.com

COUNCIL BLUFFS/CARTER LAKE

- American Inn 712-322-8400 or 800-517-4717
www.myamericaninn.com
- AmericInn 712-322-8400 or 800-634-3444
www.americinn.com
- Ameristar Casino Hotel 712-328-8888 or 866-more-fun
www.ameristar.com/CouncilBluffs
- Best Western Crossroads 712-322-3150 or 800-780-7234
www.bestwestern.com
- Comfort Suites 712-323-9760 or 877-424-6423
www.comfortsuites.com/hotel/IA056

COUNCIL BLUFFS/CARTER LAKE

- Country Inn & Suites 712-322-8282 or 800-830-5222
www.countryinns.com/councilbluffsia
- Days Inn 712-323-2200 or 800-225-3297
www.daysinn.com
- Days Inn Lake Manawa 712-366-9699 or 800-225-3297
www.daysinn.com
- Deluxe Inn 712-328-2626
[http://www.deluxinn.com/](http://www.deluxinn.com)
- Fairfield Inn 712-366-1330 or 800-236-2427
www.marriott.com/omacb
- Hampton Inn 712-328-2500 or 800-HAMPTON
www.hamptoninn.com
- Harrah's Casino Hotel 712-329-6000 or 800-HARRAHS
www.harrah.com
- Hilton Garden Inn 712-309-9000 or 877-STAY-HGI
www.omahaeastcouncilbluffs.hgi.com
- Holiday Inn Express & Suites 712-352-1300 or 800-465-4329
www.hiexpress.com
- Holiday Inn Hotel & Suites 712-322-5050 or 888-465-4329
www.holidayinn.com/councilbluffs
- Joyous B&B 712-323-0212
- Lake Manawa Inn 712-366-2228
- Microtel Inn & Suites 712-256-2900 or 800-337-0050
www.microtelinn.com
- Motel 6 712-366-2405 or 800-466-8356
www.motel6.com
- Quality Inn & Suites 712-328-3171 or 877-424-6423
www.choicehotels.com
- Settle Inn & Suites 712-366-5555 or 888-677-3060
www.settleinn.com
- Springhill Suites by Marriott 712-256-6500 or 888-287-9400
www.marriott.com/omash
- Super 7 Inn 712-328-0553
- Super 8 Motel 712-322-2888 or 800-454-3213
www.super8.com
- Value Place 712-388-8000
- Western Inn 712-322-4499 or 800-322-1842
- Willows Motel 712-366-9950

Accommodations in the LOESS HILLS

CRESCENT

Crescent View B&B 712-227-0051
www.crescentviewbnb.com

DUNLAP

Get-Away Guest House 712-643-5584
Valley View B&B 712-643-1015

GLENWOOD/PACIFIC JUNCTION

Bluff View Motel 712-622-8191
Castle Unicorn B&B 712-527-5539
www.castleunicorn.com
Western Inn Motor Lodge 712-527-3175

HAMBURG/PERCIVAL

American Best Value 712-382-2100
www.americasbestvalueinn.com
Hamburg Inn 712-382-1500
Super 8 Motel 712-382-2828 or 800-800-8000
www.super8.com

LE MARS

Amber Inn 712-546-7066 or 800-338-0298
www.amberinnlemars.com
Amerihost Inn & Suites 712-548-4910 or 800-434-5800
Super 8 Motel 712-546-8800 or 800-800-8000
www.super8.com
Holiday Inn & Suites 712-546-1700 or 800-465-4329
www.holidayinn.com

LOGAN

Blue Bird Run Farm B&B 712-644-3102
Logan Rooms 712-644-3040

MALVERN

Pierce Crossing B&B 712-624-8850
www.piercecrossing.com

MAPLETON

Maple Motel 712-882-1271

MINDEN

Minden Midtown Motel 712-483-2023
www.mindenmidtownmotel.com

MISSOURI VALLEY

De Soto Inn & Suites 712-642-4003
Hill Side Cottages 712-642-3408
www.hillside-cottage.com
Oak Tree Inn 712-642-3000
www.oaktreeinn.com
Rath Inn 712-642-2723
Super 8 Motel 712-642-4788 or 800-800-8000
www.super8.com

MOORHEAD

Loess Hills Hideaway Cabins & Campground 712-886-5003
www.loesshillshideaway.com

OAKLAND

Big Grove Country Inn & Hunting Lodge B&B 712-482-6840
www.biggrove.com

ONAWA

Super 8 Motel 712-423-2101 or 800-800-8000
www.super8.com

PISGAH

Loess Hills B & B 712-456-2220
www.loesshillsbedandbreakfast.com

SERGEANT BLUFF

Travelodge 712-224-7000
www.travelodge.com
Econo Lodge 712-943-5079
www.econolodge.com

SHELBY

Shelby Country Inn & RV Park 712-544-2766
www.shelbycountryinn.com

SIoux CITY

Americinn Lodge & Suites 712-255-1800 or 800-634-3444
www.americinn.com
New Victorian Inn 712-233-2302
www.newvictorianinn.com
Ramada Sioux City Center 712-277-1550 or 800-528-1234
www.Ramada.com
Sioux City Hotel & Convention Center 712-277-4101 or 800-593-0555
www.siouxcityhotelandconventioncenter.com
Comfort Inn 712-274-1300 or 800-523-8620
www.comfortinn.com
Days Inn 712-258-8000
www.daysinn.com
Fairfield Inn 712-276-5000 or 800-228-2800
www.marriott.com
Rodeway Inn 712-277-3211 or 856-242-7989
www.rodewayinn.com
Holiday Inn Express 712-274-0100
www.hiexpress.com
Quality Inn 712-274-1400
www.choicehotels.com
Hard Rock Hotel & Casino 712-224-ROCK
Opens Summer 2014
Holiday Inn Downtown 712-277-9400 or 800-288-4595
www.holidayinn.com
Palmer House Motel 712-276-4221 or 800-833-4221
Super 8 Motel Morningside 712-274-1520 or 800-800-8000
www.super8.com
Super 8 Motel South 712-255-8888 or 800-800-8000
www.super8.com

SLOAN

Rip Van Winkle Motel 712-428-6115 or 800-962-9465
Homestead Inn Sloan 712-428-4333
Winnavegas Inn 800-468-9466
www.winnavegas.biz
Winnavegas Hotel 800-468-9466
www.winnavegas.biz



Dorothy Pecaut Nature Center, Sioux City



Small's Fruit Farm, Mondamin

GETAWAY

TABOR

The Victorian Inn 712-629-5605

THURMAN

Skyline Sportsman's Club 712-628-4149
www.skylinehunting.com

TURIN

R.T. Reese Homestead Cabin 712-433-2400

WALNUT

Clark's Country Inn 712-784-3010
www.clarkscountryinn.com
Super 8 Motel 712-784-2223 or 800-454-3213
www.super8.com
Econo Lodge 712-784-2233 or 800-711-5409
www.econolodge.com

WOODBINE

The Town Inn 712-647-3247

For Camping and RV information, go to:

mycountyparks.com

www.iowadnr.gov/Destinations/StateParksRecAreas

Disclaimer

Information on lodging facilities, amenities and rates is provided by the individual properties. These accommodations are included in this guide for the convenience of travelers. A listing here does not constitute endorsement by the Loess Hills National Scenic Byway Council, Golden Hills Resource Conservation and Development or the Western Iowa Tourism Region. Please call ahead for specific information and reservations.

FOR MORE INFORMATION



Western Iowa Tourism Region
888-623-4232

info@visitwesterniowa.com | www.visitwesterniowa.com



Golden Hills RC&D

712 South Highway 6, P.O. Box 189
Oakland, IA 51560-0189
712-482-3029

lhnsb@goldenhillsrccd.org | www.goldenhillsrccd.org



National Scenic Byway
800-4BYWAYS (1-800-429-9297)
www.byways.org



Loess Hills Alliance
712-433-4645
lha@longlines.com
www.loesshillsalliance.com

The Loess Hills National Scenic Byway began in 1989 as a grassroots effort by dedicated citizens in cooperation with Golden Hills Resource and Conservation Development, Inc.* ("RC&D") and the Western Iowa Tourism Region. The Byway became an Iowa Scenic Byway on July 8, 1998 and on June 15, 2000 received the National Scenic Byway designation. The Byway is governed by a 12-member board of representatives from the seven Byway counties, State Historical Society, Iowa Department Natural Resources, Golden Hills RC&D, Western Iowa Tourism Region and an at-large member. Countless thanks go to the County Boards of Supervisors continued financial support. Thanks also go to the County Engineers and County Conservation Boards whose members provide numerous hours of professional expertise and to the landowners and individuals who continue to volunteer their time to the Loess Hills National Scenic Byway.

*Golden Hills RC&D is a not-for-profit organization dedicated to the wise use and protection of natural resources for the economic and social betterment of the people of southwest Iowa.

This publication is funded in part by the Iowa West Foundation, Loess Hills Alliance Economic Development Committee, Western Iowa Tourism Region, Golden Hills Resource Conservation and Development (RC&D), Fremont County Board of Supervisors, Mills County Board of Supervisors, Pottawattamie County Board of Supervisors, Harrison County Board of Supervisors, Monona County Board of Supervisors, Woodbury County Board of Supervisors and Plymouth County Board of Supervisors.

This publication and its contents © Golden Hills RC&D, Oakland, Iowa. Special thanks to the Harrison County GIS Department for map assistance and layout support.