

SOME OF THE MOST BEAUTIFUL BIRDS in North America can be found in Iowa's Loess Hills. The Loess Hills provides a north-south conduit for migrating raptors and passerines. The mix of riparian, woodland, oak savanna, and prairie habitats throughout the seven-county region make for excellent wildlife and bird viewing opportunities. The Missouri River Valley and Central Flyway also creates an interesting blend of western and eastern bird species during migration.

Plymouth County

Broken Kettle Grasslands is a 3,000 acre preserve owned and managed by the Iowa Nature Conservancy, featuring the largest remaining contiguous native prairie in the state. The site is designated by the Iowa DNR as a Bird Conservation Area. Visitors may also see more than 125 bison, which were introduced in the fall of 2008. There are no hiking trails, but the public is allowed access to hike in the preserve along the south side of Butcher Road. Butcher Road also affords spectacular views and gives a good vantage point for roadside birding.

KEY SPECIES:

- Black-billed Magpie
- Upland Sandpiper
- Boblink
- Western Kingbird
- Whip-poor-will
- Saw-whet Owl
- Woodland Warbler

 www.mycountyparks.com/County/Plymouth.aspx

Woodbury County

Stone State Park, located in Sioux City, offers excellent bird watching opportunities within an urban setting. Stone Park is recognized nationally as an "Urban Wildlife Sanctuary." The Dorothy Pecaut Nature Center, found within the park, features bird feeder stations, hands-on exhibits, educational programs and live raptor viewing throughout the year.

KEY SPECIES:

- Turkey Vulture
- Scarlet Tanager
- Ovenbird
- Western Kingbird
- Whip-poor-will
- Black-billed Cuckoo
- Wood Thrush
- American Woodcock
- Louisiana Waterthrush
- Summer Tanager
- Kentucky Warbler

 www.woodburyparks.org

This brochure highlights one birding area per county in the Loess Hills. For additional information on the Loess Hills or Birding visit:

Western Iowa Tourism Region
www.visitwesterniowa.com/outdoorfun

Loess Hills Alliance
www.loesshillsalliance.com

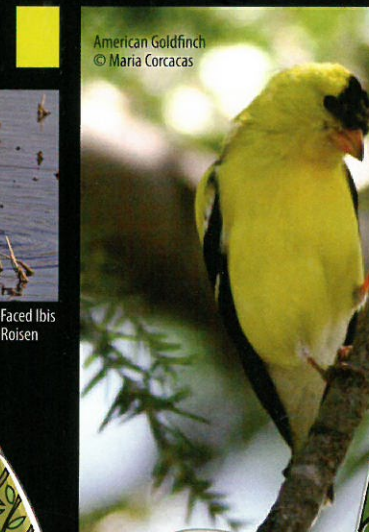
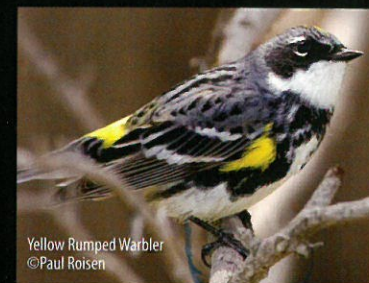
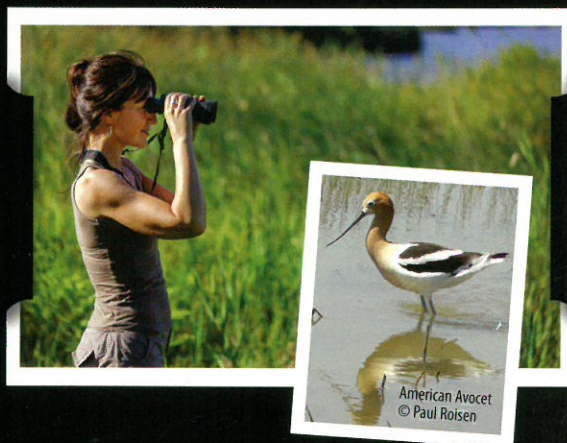
Loess Hills National Scenic Byway
www.visitloesshills.org

Iowa Birds & Birding
www.iowabirds.org

Iowa Department of Natural Resources
www.iowadnr.gov/Destinations/WatchableWildlife/BirdingTrails.aspx

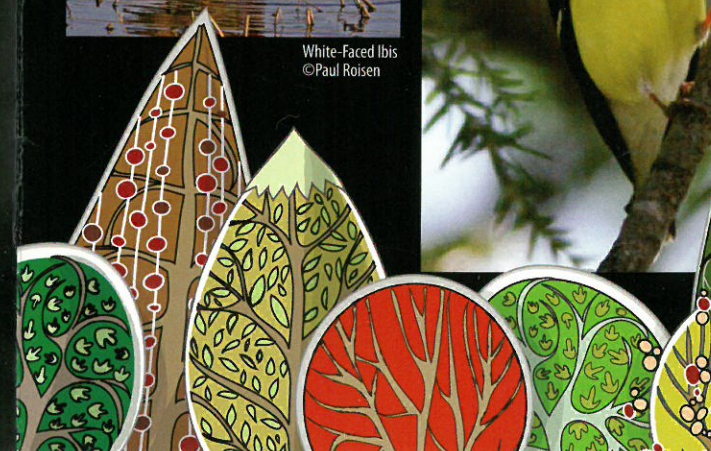
Iowa Association of County Conservation Boards
www.mycountyparks.com

Funding Provided By:
Loess Hills Alliance

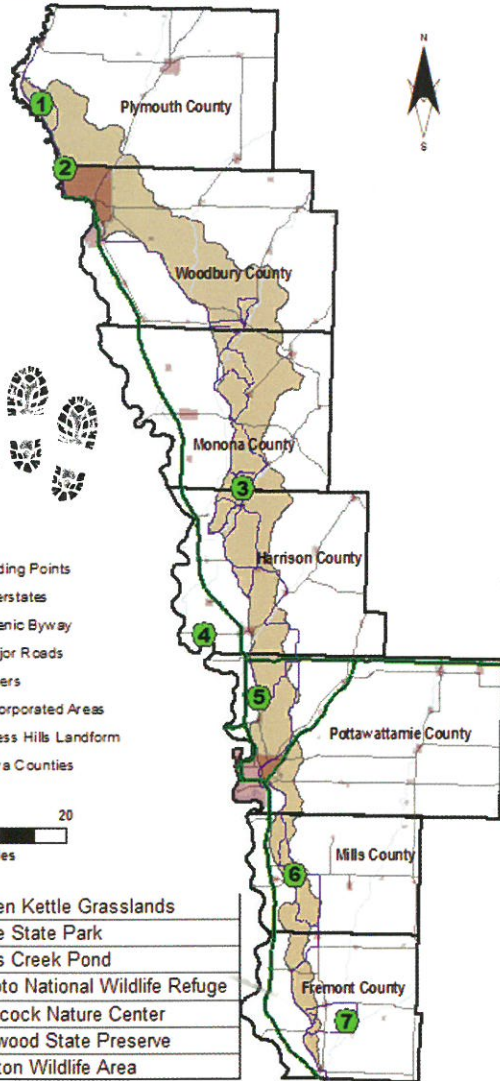


Portions of Harrison and Monona Counties have been designated as a Loess Hills Bird Conservation Area by the Iowa DNR and encompass 94,000 acres of public and private lands.

BIRDING IN THE LOESS HILLS



Hike,
BIKE
drive,
play
and
STAY



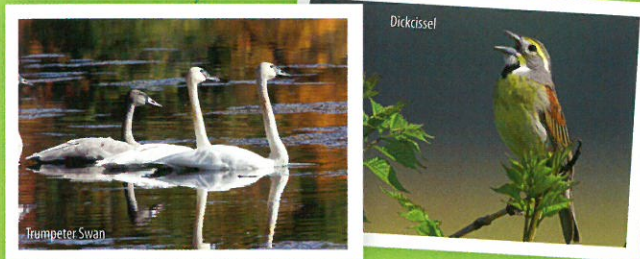
Monona County

Jones Creek Pond is a part of the Loess Hills State Forest, not far from the Loess Hills National Scenic Byway spine. The mix of prairies, wetland, and woodland habitats allow for a good diversity of birds. The area is managed by the Iowa Department of Natural Resources. A hiking trail, parking lot access and picnic shelter allow visitors to explore this hidden treasure.

KEY SPECIES:

- Dickcissel
- Bobolink
- Western Meadowlark
- Loggerhead Shrike
- Western Kingbird
- Trumpeter Swan

www.iowadnr.gov/Destinations/StateForests/LoessHillsStateForest.aspx
www.mycountyparks.com/county/Monona.aspx



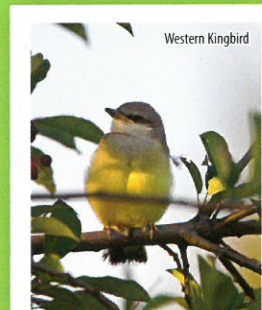
Harrison County

The DeSoto National Wildlife Refuge lies in the floodplain of the Missouri River in a former bend of the river about five miles west of Missouri Valley. Each spring and fall flights of ducks and geese have marked the changing seasons by migrating along this traditional waterflow flyway.

KEY SPECIES:

- Bald Eagle
- Waterfowl
- Warbler
- Gull
- Shorebird
- Wild Turkey

www.harrisoncountyparks.org/
www.fws.gov/refuge/desoto/



Pottawattamie County

At the **Hitchcock Nature Center**, follow signs to the Loess Hills Lodge and begin your visit in the Loess Hills exhibit gallery. Designated as Iowa's first Important Bird Area, Hitchcock provides breeding and migratory habitat for over 240 avian species. The broad expanse of the adjacent Missouri River Valley and the updrafts created by the prevailing winds that strikes the steep, westerly face of the Loess Hills creates an ideal "hawk highway" that funnels the migrating raptors right past Hitchcock. August through December, a group of volunteers monitor the migration from the 45' observation tower.

KEY SPECIES:

- Migrating Hawk
- Prairie Songbird

www.pottcoconservation.com

Mills County

The Glenwood Archaeological State Preserve features 906 acres of grasslands, woodland, wetland, and some agricultural fields. The area is located right on the Loess Hills Scenic Byway, and is managed by the Mills County Conservation Board.

KEY SPECIES:

- Eastern Bluebird
- Eastern Towhee
- Rose-breasted Grosbeak
- Dickcissel
- Bobwhite Quail
- Wood Thrush
- Brown Thrasher
- Eastern Phoebe
- Trumpeter Swan



www.mccb.millscoia.us

Fremont County

At around 2,700 acres, the **Riverton Wildlife Area** boasts a mixture of marsh and upland timber habitats that host a variety of birds. The north end of the management area includes cropland, and the crops offer migrating ducks plenty of forage. Riverton is flooded in the spring after the northern migration, allowed to dry during the summer, and then flooded again around the middle of August.

KEY SPECIES:

- Waterfowl
- Bald Eagle

www.fremontcountyiowa.com

