

TRANSFORMATIONAL CHANGE: A SHARED RESPONSIBILITY

BUILDING STRONG PARTNERSHIPS TO IMPLEMENT THE FAMILY FIRST PREVENTION SERVICES ACT

THE FAMILY FIRST PREVENTION SERVICES ACT (FAMILY FIRST) IS A FEDERAL LAW THAT WILL FUNDAMENTALLY REDESIGN IOWA'S CHILD WELFARE SYSTEM AND PUTS GREATER EMPHASIS ON PREVENTION TO KEEP KIDS SAFE AND FAMILIES TOGETHER.

The members of the Coalition for Family and Children's Services are committed to helping the Department of Human Services successfully implement the requirements of Family First.

This results in **BETTER OUTCOMES FOR IOWA'S AT-RISK CHILDREN**, including:

Stronger preventative services for substance abuse, mental health, and parental skill development

Fewer children in out-of-home placement

Shorter lengths of stay in shelters and group homes

An expanded menu of options – from preventative to residential treatment – for at-risk kids



In order for Iowa to draw down Family First federal funds, private providers that contract with the state will be required to implement scientific, evidence-based practices (EBPs) to serve families. Evidence-based practices will support better outcomes for kids.

That means Iowa must invest **NOW**. Providers must have the necessary start-up and maintenance funds and the time to prepare our workforce to meet the demands of Family First. **This requires a significant fiscal commitment: \$10 million in FY2020, an additional \$10 million in FY2021, and an additional \$5 million in both FYs 2022 and 2023.** Support Iowa's human services providers as we help Iowa meet its goal to strengthen families and keep children safe.



The Coalition for Family and Children's Services in Iowa is an alliance of member agencies that provide direct service to children and families in the child welfare, juvenile justice, and children's mental health systems.

For more information, contact Kristie Oliver, Executive Director, at 515.244.0074 ext. 1

2018-2019 MEMBER AGENCIES

AMERICAN HOME FINDING ASSOCIATION

HOPE HAVEN, INC.

BETHANY CHRISTIAN SERVICES OF
NORTHWEST IOWA

MIDWEST CHRISTIAN SERVICES

BOYS TOWN OF IOWA

LUTHERAN SERVICES IN IOWA

CHILDREN & FAMILIES OF IOWA

ORCHARD PLACE

CHRISTIAN HOME ASSOCIATION -
CHILDREN'S SQUARE, USA

QUAKERDALE FAMILY SERVICES

CLARINDA ACADEMY

SOUTHWEST IOWA FAMILY ACCESS
CENTER

COUNSELING AND FAMILY CENTERED
SERVICES, INC.

WOODWARD YOUTH CORPORATION -
DBA WOODWARD, ACADEMY,
FOREST RIDGE, AND WOODWARD
COMMUNITY BASED SERVICES

CRITTENTON CENTER

YOUTH EMERGENCY SERVICES & SHELTER

FAMILIES FIRST COUNSELING SERVICES

YOUTH HOMES OF MID-AMERICA

FIRST RESOURCES

YOUNG HOUSE FAMILY SERVICES

FOUNDATION 2

YSS

FOUR OAKS

YOUTH SHELTER CARE OF NORTH
CENTRAL IOWA

HILLCREST FAMILY SERVICES



The Coalition for Family and Children's Services in Iowa is an alliance of member agencies that provide direct service to children and families in the child welfare, juvenile justice, and children's mental health systems.

For more information, contact Kristie Oliver, Executive Director, at 515.244.0074 ext. 1

WORKFORCE MATTERS. FAMILIES MATTER.

6,995

**TOTAL
WORKFORCE
OF COALITION
MEMBER AGENCIES**

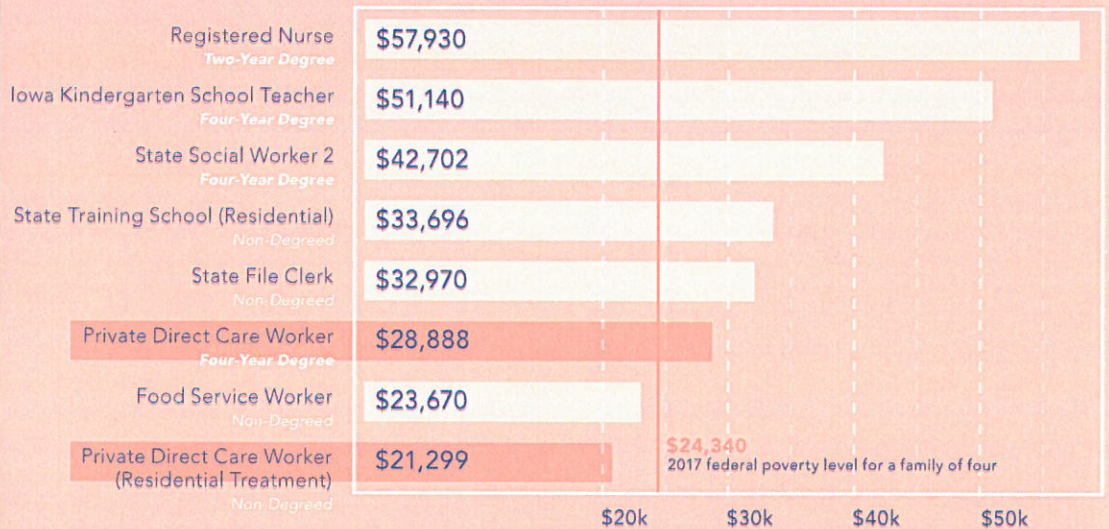
\$198,227,387

**TOTAL PAYROLL
OF COALITION
MEMBER AGENCIES**

2017 SALARY COMPARISON

**Iowa's child welfare
workers are
chronically underpaid.**

These are the people
who treat the most
vulnerable kids and
families in Iowa.



A CHILD IN IOWA — BY THE NUMBERS

1 in 5 Iowa kids with a mental illness

50% of students age 14+ with a mental illness drop out of school

SUICIDE IS 3RD leading cause of death among 10-14 year-olds in Iowa

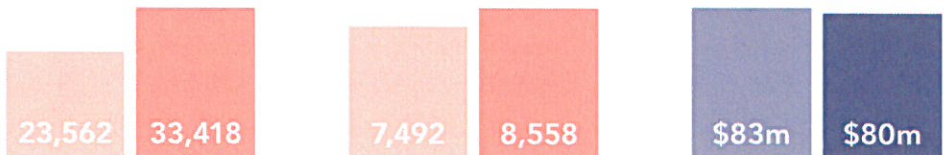
44% increase in the number of kids living in poverty from 2000-2016

2,596 Iowa kids entering foster care in 2017

69% of kids engaged in the child welfare system have experienced 3 or more ACEs

CHILD ABUSE IN IOWA FROM 2014 TO 2017

Iowa must invest in its child welfare system in order to keep all kids safe, secure, and well.



+28%
ALLEGATIONS

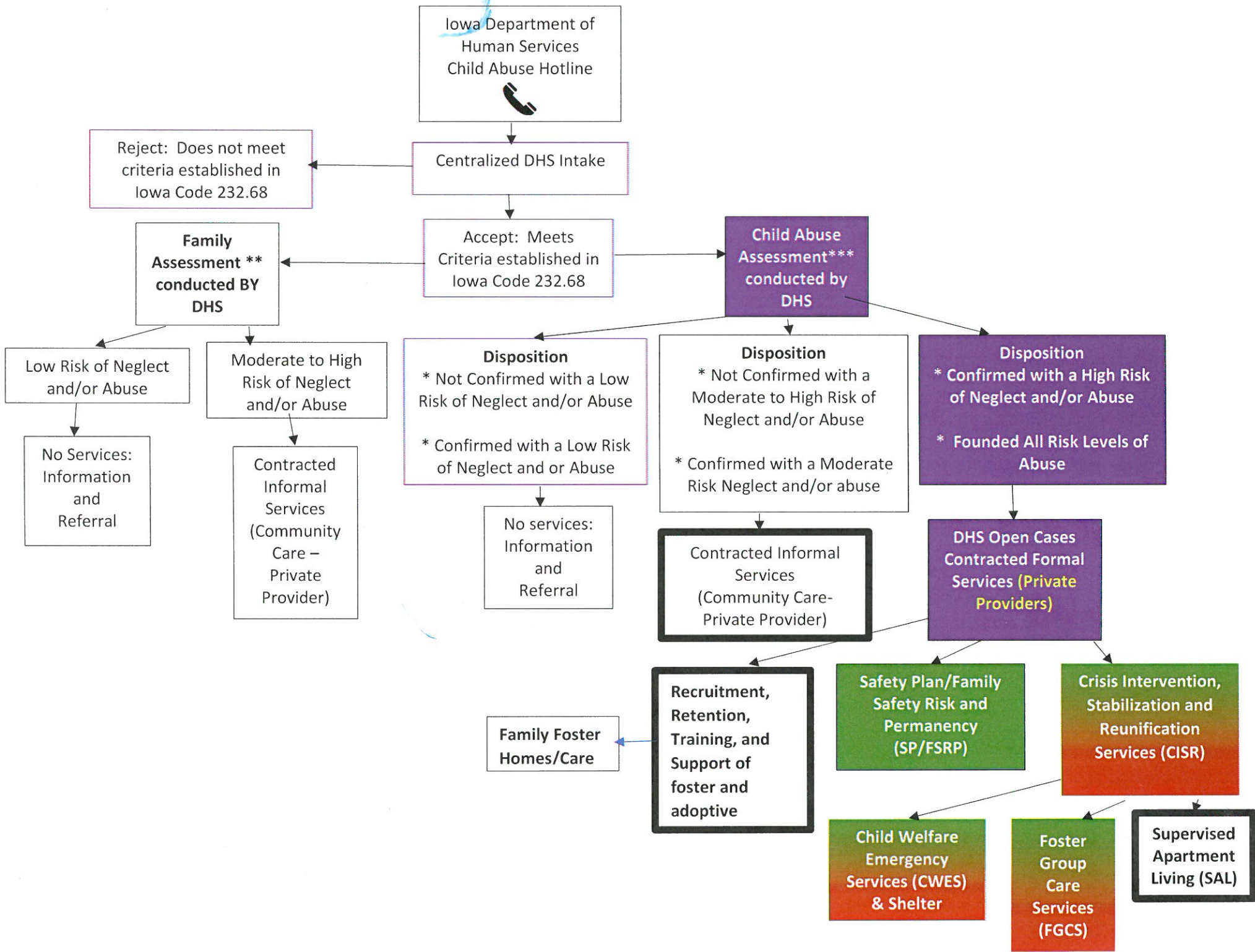
+13%
CONFIRMED

-4%
FUNDS



For more information, contact Kristie Oliver, Executive Director, at 515.244.0074 ext. 1

Iowa's Child Welfare Assessment Outcome and Service Provision



Family First Prevention Services Act (Family First)

An expanded menu of prevention options eligible for federal IV-E reimbursement under Family First. These services are designed to prevent removal of the child from the family home:

- Mental health, substance abuse prevention, and treatment services provided by a qualified clinician
- In-home, parent skill-based programs that include parenting skills training, parent education, and individual and family counseling
- Evidence-Based Kinship Navigator Program

(Also available to children in foster care in kinship placements)

Who is eligible for the services?

- A child who is at imminent risk of entering foster care but can remain safely at home or in a kinship placement (not foster care) with receipt of services or programs.
- A child in foster care who is pregnant or parenting

What is different?

Shorter lengths of stay in shelters and group homes.
There are limitations on federal I-VE reimbursement for placements that are not family foster homes/care

Private providers that contract with the state will be required to implement scientific evidence-based practices. Services will need to be "promising," "supported," or "well-supported" as defined by the US Department of Health and Human Services and Iowa DHS.

At least 50% of the expenditures must be for well-supported services.

Iowa's Differential Response has two paths – Child Abuse Assessment and Family Assessment – With the Common Goal of Keeping Children Safe

**Family Assessment: Primary focus is on family functioning, dynamics, and healthy child development, while ensuring safety is not comprised. Only cases for which denial of critical care are alleged and for which there is not indication that the child is in imminent danger will be placed on the family assessment path.

*** Child Abuse Assessment: Primary focus is on investigation of allegations.

Disposition:

- Not confirmed: Based on the credible evidence gathered, DHS determines that there is not a preponderance of available credible evidence that abuse did occur.
- Confirmed (but not placed on the Child Abuse Registry): Based on a preponderance of all of the credible evidence available to DHS, the allegation of abuse is confirmed; however, the abuse will not be placed on the Child Abuse Registry.
- Founded: Based on a preponderance of credible evidence available to DHS, the allegation of abuse is confirmed, and it is the type of abuse that requires placement on the Child Abuse Registry.