

# IESBVI & ISD

Iowa School for the Deaf

## Long Hall Interior/Exterior Renovations

FY20  
Infrastructure  
Request  
February, 2019

# Exterior of Long Hall



**ISD**  
Long Hall  
Renovation



# Long Hall background

- Constructed: 1930
- 50,442 square feet
  - 1st floor: 29,382 sq. ft.
  - 2nd floor: 18,160 sq. ft.
  - 3<sup>rd</sup> floor: 2,900 sq. ft.

**Middle school and high school academic classes are held in Long Hall.**

## Site investigation

- August, 2015 by Nielsen Mayne Architects of Omaha
- ➔ Appraise existing interior and exterior conditions
  - ➔ Determine identifiable improvements and stabilize deterioration
  - ➔ Review for required upgrades to make classrooms accessible for students who are deaf/hard of hearing; blind/visually impaired



**ISD**  
**Long Hall**  
**Renovation**

# General sequence of completion

1.

- Replace all windows, exterior doors

2.

- Tuckpoint as needed
  - Study identified water-damaged walls that need mold growth mitigation.
  - Plaster and finishes to be removed; new infill walls constructed

3.

- Upgrade cooling system
  - Improve humidity control
  - Lower operating costs
  - New system can heat or cool any zone independently.



**ISD**  
**Long Hall**  
**Renovation**

# General sequence of completion

4.

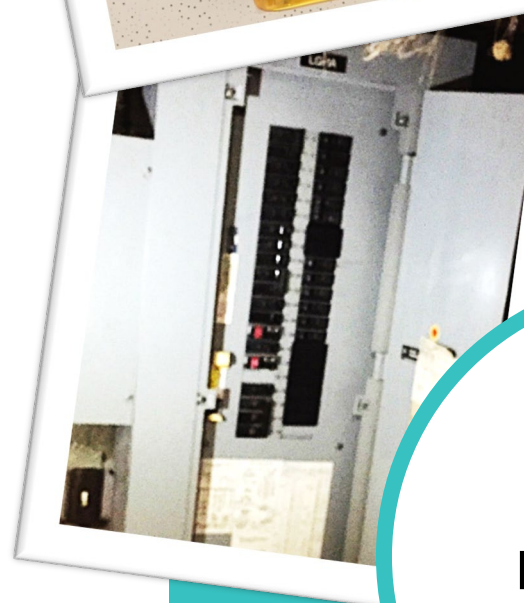
- Added fire protection/suppression system
  - Provides more protection to facility
  - Allows more time for occupants to evacuate in case of fire

5.

- New audial and visual alert system critical for weather/fire/intruder warning

6.

- New electrical panels
  - Support hallway and classroom lighting upgrades
  - Supports new emergency (light) notification system
  - Continued technology expansion



**ISD**  
**Long Hall**  
**Renovation**

# General sequence of completion

7.

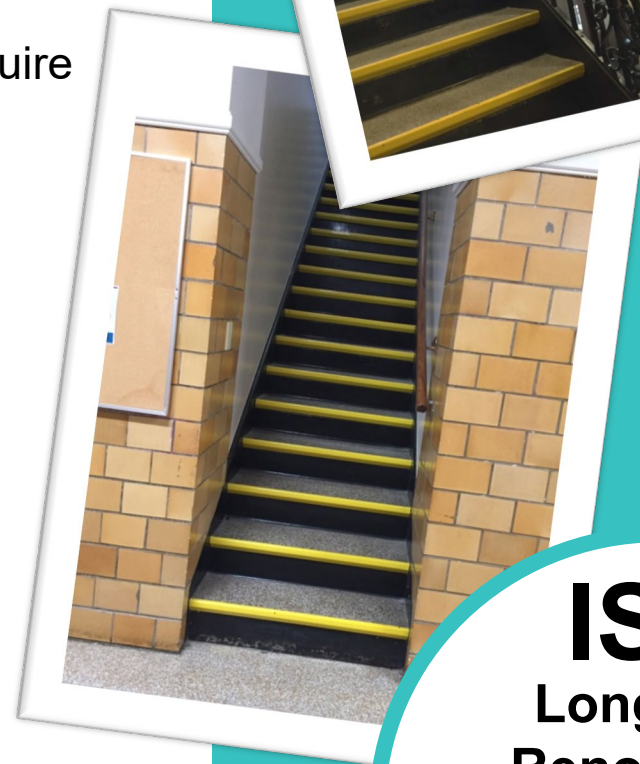
- Interior doors recessed into rooms
  - Eliminate barriers and tripping hazards for students and faculty with vision impairments

8.

- Stair accessibility and building codes require:
  - Handrail extensions
  - Tactile/visual strips on stair tread edges

9.

- Stairs between 2<sup>nd</sup> and 3<sup>rd</sup> floors require enclosure (2 sets)
  - Reduce spread of fire and smoke



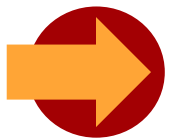
**ISD**  
Long Hall  
Renovation



# \$4.3 million infrastructure request

## One-year infrastructure request

- Accessibility modifications needed for blind and visually impaired students
- Provide contemporary learning environment for school built in the 1930s
- Safety, energy efficient HVAC, electrical upgrades needed



**This is the total funding needed for the renovation of Long Hall.**

# 18 years

**Last time capital funds were received by the Special Schools**



**ISD**  
**Long Hall**  
**Renovation**