

**IOWA DEPARTMENT OF INSPECTIONS AND APPEALS**

**AGENCY**

**BRIEFING**

**FOR THE ADMINISTRATION AND  
REGULATION APPROPRIATIONS  
SUBCOMMITTEE**

**JANUARY 31, 2019**



# TABLE OF CONTENTS

**DEPARTMENT SUMMARY ..... 3**

**OPERATING BUDGET OVERVIEW ..... 4**

**ADMINISTRATION DIVISION ..... 5**

**ADMINISTRATIVE HEARINGS DIVISION ..... 7**

**HEALTH FACILITIES DIVISION ..... 8**

**INVESTIGATIONS DIVISION ..... 10**

**CHILD ADVOCACY BOARD ..... 12**

**IOWA RACING & GAMING COMMISSION ..... 13**

**EMPLOYMENT APPEAL BOARD ..... 14**

**OFFICE OF THE STATE PUBLIC DEFENDER ..... 15**

## DIA Mission

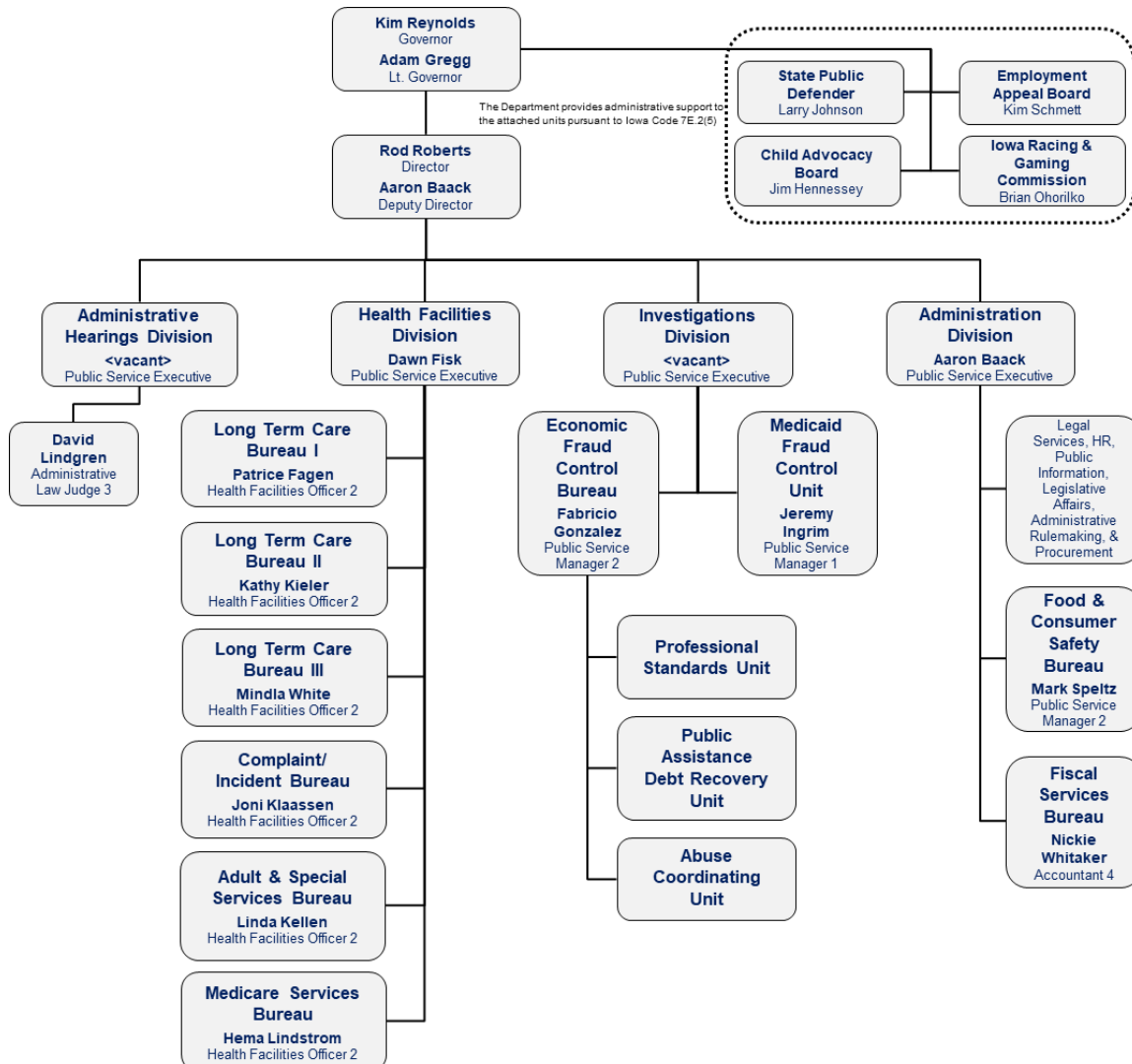
Fairly and impartially investigate, regulate, inspect, and adjudicate to ensure efficient government, compliance with the law, the protection of the health, safety, welfare and economic well-being of Iowans.



# DEPARTMENT SUMMARY

The [Iowa Department of Inspections and Appeals](#) (DIA) is a multifaceted regulatory agency charged with protecting the health, safety, and well-being of Iowans. The Department was created in 1986 ([Iowa Code Chapter 10A](#)) as part of state government reorganization. Its mission is to coordinate and conduct various audits, appeals, hearings, inspections and investigations related to the operations of the Executive Branch of Iowa State Government.

Staff in the Department are responsible for inspecting and licensing or certifying health care providers and suppliers, restaurants and grocery stores, social and charitable gambling operations, and hotels and motels. In addition, DIA staff investigates alleged fraud in the State's public assistance programs and conducts contested case hearings to settle disputes between Iowans and various state government agencies. DIA is organized into four major operational divisions collectively referred to as the "core divisions": the Administration Division, the Administrative Hearings Division, the Health Facilities Division and the Investigations Division. Each division has its own Code-mandated duties and responsibilities.





Also attached to the Department are four semi-autonomous units – the Child Advocacy Board, the Employment Appeal Board, the Iowa Racing and Gaming Commission (IRGC) and the Office of the State Public Defender (SPD). DIA provides fiscal management, human resource services, and other related administrative functions for these attached units.

## OPERATING BUDGET OVERVIEW

The table below provides a summary of the various sources of operating revenues for the Department and its attached units in SYF19. As illustrated, the Department’s \$106.2M operating budgets are comprised of multiple sources, and significant variation exists not only between divisions, but often between bureaus, and even units.

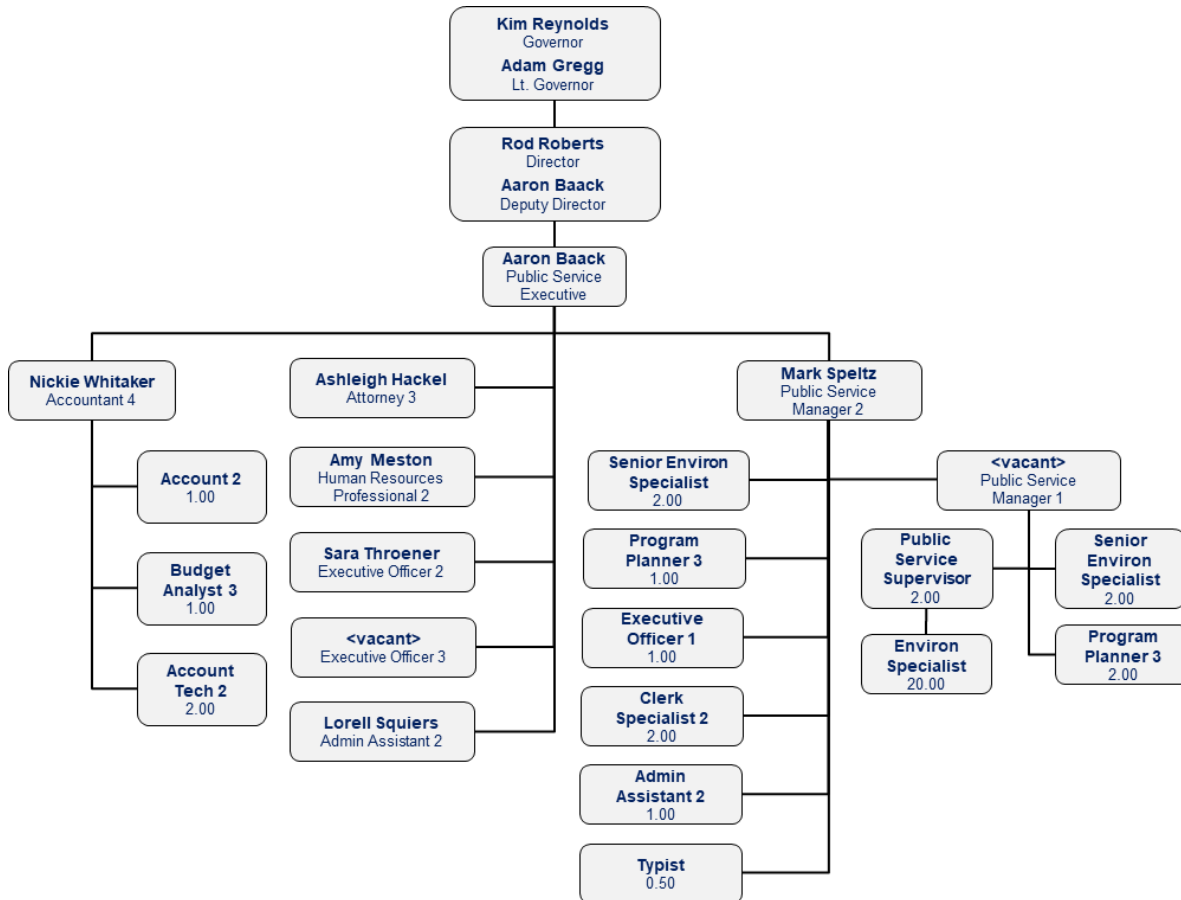
For example, 68.5% of the Health Facilities Division’s approximate \$14.7M operating revenues come from matching Federal Funds, with 32.2% coming from the General Fund. At the division level, however, the Medicare Services Bureau receives nearly 100% of it’s funding through Federal Funds, whereas the Adult & Special Services Bureau receives nearly all of it’s funding through the General Fund.

	General Fund Appropriation	Federal Funds	Other Government Receipts	Fees	Miscellaneous Receipts	Approp from Other Funds	Approp Transfer & Carry Forward	TOTAL
<b>Core Divisions</b>								
Administration	511,580	328,000	554,599	-	100	-	1,069	1,395,348
Administrative Hearings	625,827	-	2,633,897	-	20,000	1,623,897	43,503	4,947,124
Investigations	2,471,791	1,038,636	2,410,000	-	5,000	-	129,314	6,054,741
Health Facilities	4,734,682	9,684,222	180,251	-	64,000	-	44,248	14,707,403
Food & Consumer Safety	574,819	805,000	17,500	2,794,683	-	-	-	4,192,002
<b>Core Division Total</b>	<b>8,918,699</b>	<b>11,855,858</b>	<b>5,796,247</b>	<b>2,794,683</b>	<b>89,100</b>	<b>1,623,897</b>	<b>218,134</b>	<b>31,296,618</b>
<b>% of Core Division Total</b>	28.5%	37.9%	18.5%	8.9%	0.3%	5.2%	0.7%	
<b>CAB &amp; EAB</b>								
Child Advocacy Board	2,570,605	-	688,095	-	2,800	-	37,764	3,299,264
Employment Appeal Board	38,912	-	1,135,419	-	100	-	567	1,174,998
<b>CAB &amp; EAB Total</b>	<b>2,609,517</b>	<b>-</b>	<b>1,823,514</b>	<b>-</b>	<b>2,900</b>	<b>-</b>	<b>38,331</b>	<b>4,474,262</b>
<b>% of CAB &amp; EAB Total</b>	58.3%	-	40.8%	-	0.1%	-	0.9%	
<b>State Public Defender - note: funds appropriated from the Justice Systems Budget Subcommittee</b>								
Indigent Defense	35,144,448	-	1,632,543	-	140,325	-	-	36,917,316
Public Defender Operations	26,505,299	-	230,000	-	-	88,800	229,430	27,053,529
<b>SPD Total</b>	<b>61,649,747</b>	<b>-</b>	<b>1,862,543</b>	<b>-</b>	<b>140,325</b>	<b>88,800</b>	<b>229,430</b>	<b>63,970,845</b>
<b>% of SPD Total</b>	96.4%	-	2.9%	-	0.2%	0.1%	0.4%	
<b>Iowa Racing &amp; Gaming Commission</b>								
<b>IRGC Total</b>	<b>-</b>	<b>-</b>	<b>-</b>	<b>-</b>	<b>6,000</b>	<b>6,492,010</b>	<b>-</b>	<b>6,498,010</b>
<b>% of IRGC Total</b>	-	-	-	-	0.1%	99.9%	-	
<b>DEPARTMENT TOTALS</b>								
<b>Department Total</b>	<b>73,177,963</b>	<b>11,855,858</b>	<b>9,482,304</b>	<b>2,794,683</b>	<b>238,325</b>	<b>8,204,707</b>	<b>485,895</b>	<b>106,239,735</b>
<b>% of Dept Total</b>	68.9%	11.2%	8.9%	2.6%	0.2%	7.7%	0.5%	



# ADMINISTRATION DIVISION

Essential, centralized support services for the Department are administered by and coordinated through the Administration Division. Staff in the Division oversees all strategic planning, finance and budgeting, legislative affairs, administrative rulemaking, personnel, purchasing and public information activities for the Department.



The Division also supervises the activities of the Food and Consumer Safety Bureau, which include food safety inspections at restaurants, grocery stores, and food processing plants, as well as sanitation inspections performed at hotels and motels. The State's [Social and Charitable Gambling program](#) is also located in the Food and Consumer Safety Bureau.

In addition to duties as the Department's Chief Administrative Officer, the Director is authorized to enter into and implement agreements or compacts between the State of Iowa and Native American tribes to operate Indian gaming establishments.

Currently, three casinos in Iowa are operated by Native American tribes: Blackbird Bend Casino in Onawa (operated by the Omaha Tribe of Nebraska), Meskwaki Bingo and Casino in Tama (operated by the Sac and Fox Tribe of the Mississippi in Iowa), and WinnaVegas in Sloan (operated by the Winnebago Tribe of Nebraska).



The Ponca Tribe of Nebraska opened the Prairie Flower Casino in Carter Lake in November of 2018. Currently, no compact is required with the tribe, as gaming at the casino is limited to class II gaming.

A high-level summary of the Division’s budget and FTE figures is included here.

Fund Source	SFY17 actuals	SFY18 actuals	SFY19 budget
General Fund Appropriation	524,632	511,580	511,580
Federal Funds	329,425	347,374	328,000
Other Government Reciepts	561,730	553,562	554,599
Miscellaneous Reciepts	179	560	100
Appropriation Carry-Forward	87,265	23,325	1,069
<b>Total</b>	<b>1,503,231</b>	<b>1,436,401</b>	<b>1,395,348</b>
FTE	13	12	11

In addition to the Director and Deputy Director, the Division includes personnel responsible for legislative affairs, administrative rulemaking, human resources, purchasing, and public information activities for the Department. Of special note is the Department’s contract to provide human resource services to the Iowa Department of Human Rights. The Division also includes two Bureaus:

- [Fiscal Services Bureau](#) – responsible for centralized accounting, claims processing, budgeting and financial reporting for the Department. During State Fiscal Year (SFY) 2018, the Bureau processed over 40,000 state warrants and electronic fund transfers.
- [Food and Consumer Safety Bureau](#) – the Bureau is responsible for administering and enforcing the Iowa Food Code ([Iowa Code Chapter 137F](#)) by conducting food safety inspections at food establishments (grocery stores, restaurants, and convenience stores) and food processing plants. The Food Code is based upon food safety recommendations developed by the Food and Drug Administration, in consultation with representatives from the food industry and regulators, and focuses on public health and the prevention of foodborne illness. The Bureau is directly responsible for inspections in 54 counties; the remaining counties have inspections and licensing completed by local contracting health departments. During the 2018 legislative session, [SF2390](#) was passed which established new license types and increased fees for existing licenses. This legislation was originally introduced in 2015 after several stakeholder meetings that included representatives from industry, the Iowa Environmental Health Association, the Iowa State Association of Counties, and the DIA.

**SFY18 Metrics**

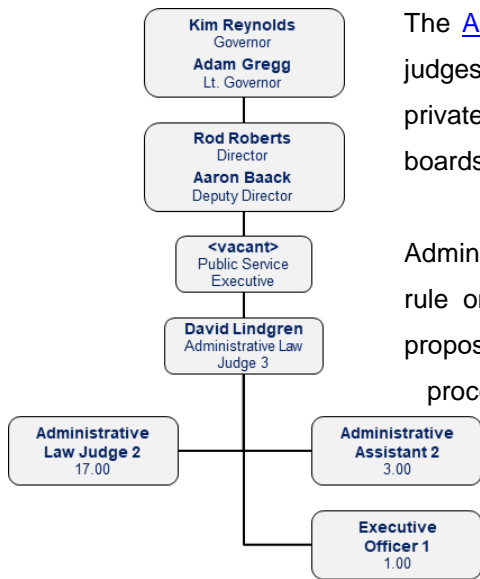
**Completed  
11,266 food  
inspections.**

Although part of the Administration Division, the Food and Consumer Safety Bureau receives a separate appropriation, and therefore a high-level summary of the Bureau’s budget and FTE figures for three years is included here. Note that although the Bureau receives \$574,819 in General Fund Appropriations, it reimburses the General Fund \$800,000 each year.

Fund Source	SFY17 actuals	SFY18 actuals	SFY19 budget
General Fund Appropriation	573,934	549,819	574,819
Federal Funds	1,015,362	1,163,743	805,000
Other Government Reciepts	16,240	(261)	17,500
Fees	1,864,221	2,170,875	2,794,683
Miscellaneous Reciepts	6,298	8,024	-
Appropriation Carry-Forward	651	269,340	-
<b>Total</b>	<b>3,476,706</b>	<b>4,161,540</b>	<b>4,192,002</b>
FTE	28	28	32



# ADMINISTRATIVE HEARINGS DIVISION



The [Administrative Hearings Division](#) provides independent administrative law judges to conduct contested case administrative proceedings, primarily between private citizens and government agencies, including state and local departments, boards, and commissions.

Administrative Law Judges (ALJs) preside over telephone or in-person hearings, rule on motions or objections, decide cases fairly and impartially and write proposed agency decisions in cases ranging from driver’s license revocation proceedings before the Department of Transportation and child abuse assessment proceedings before the Department of Human Services (DHS) to professional discipline proceedings before the Board of Medicine and other professional licensing boards.

The Division is authorized in [Iowa Code § 10A.801](#), and is governed by the Iowa Administrative Procedures Act ([Iowa Code Chapter 17A](#)), the Division’s [administrative rules](#), and the [relevant statutes and rules](#) of the agency for which the Division is conducting a particular contested case proceeding. While the Division is required to conduct certain contested case proceedings by statute or administrative rule, it is also authorized to conduct any proceeding for any governmental entity on a contract basis.

All proceedings are conducted by qualified administrative law judges who are Iowa-licensed attorneys. Division ALJs have experience conducting hearings as the sole presiding officer, as a part of a panel of decision makers, or as an advisor and decision drafter for a board or commission.

During SY18, the Division closed 11,306 cases for 48 State or local agencies.

A high-level summary of the Division’s budget and FTE figures for three years is included here.

Fund Source	SFY17 actuals	SFY18 actuals	SFY19 budget
General Fund Appropriation	653,276	625,827	625,827
Other Government Receipts	2,605,670	2,596,585	2,633,897
Miscellaneous Receipts	45,195	636	20,000
Approps from Other Funds	1,623,897	1,623,897	1,623,897
Appropriation Carry-Forward	54,905	-	43,503
<b>Total</b>	<b>4,982,943</b>	<b>4,846,945</b>	<b>4,947,124</b>
FTE	22	21	23

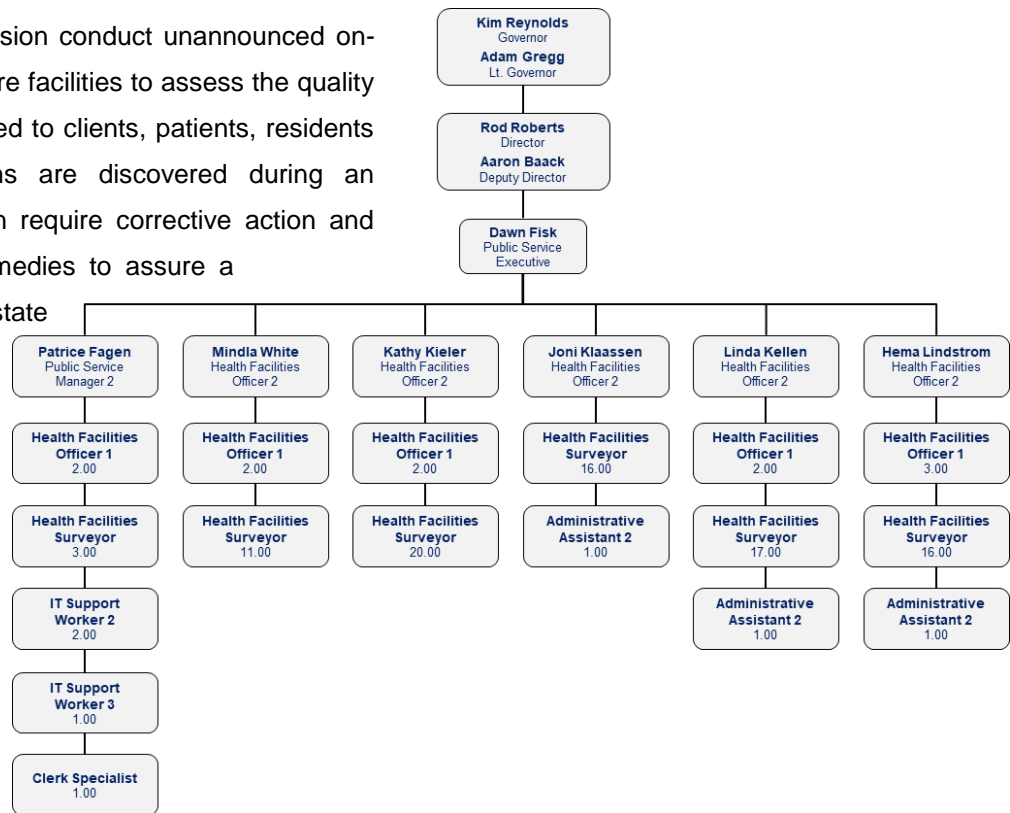


# HEALTH FACILITIES DIVISION

The [Health Facilities Division](#) is the designated state survey and certification agency, and is responsible for licensing or certifying Medicare and Medicaid programs and other health care providers and suppliers operating in the State of Iowa. Entities subject to the Department's oversight and regulation include nursing facilities, skilled nursing facilities, residential care facilities, intermediate care facilities for the intellectually disabled, hospitals, hospices, home health agencies, programs and facilities caring for children, assisted living programs and elder group homes.

Survey teams from the Division conduct unannounced on-site inspections at health care facilities to assess the quality of care and services provided to clients, patients, residents and tenants. If problems are discovered during an inspection, the Division can require corrective action and implement enforcement remedies to assure a facility's compliance with state and federal rules.

Division personnel investigate complaints alleging improper care or treatment of patients, residents, and tenants in licensed and certified entities.



Division personnel also staff the State Hospital Licensing Board, which advises the Department on issues impacting the administration of hospitals in the State of Iowa.

The Division maintains a [website](#) that provides multiple tools to assist individuals in the selection of a long-term health care provider, such as the directory of long-term care facilities and the Department's Report Cards web page. Providers, too, find valuable information such as the latest rules and regulations governing their operations. Links to other useful web sites are also provided for easy access to relevant information.





A high-level summary of the Division’s budget and FTE figures for three years is included here.

Fund Source	SFY17 actuals	SFY18 actuals	SFY19 budget
General Fund Appropriation	4,899,541	4,684,682	4,734,682
Federal Funds	9,644,242	8,998,850	9,684,222
Other Government Receipts	158,153	256,350	180,251
Fees	62,500	61,500	-
Miscellaneous Receipts	500	500	64,000
Appropriation Carry-Forward	79,046	-	44,248
<b>Total</b>	<b>14,843,982</b>	<b>14,001,882</b>	<b>14,707,403</b>
FTE	104	98	109

The Health Facilities Division is comprised of the following bureaus:

- Long Term Care Bureaus – responsible for the survey and certification of approximately 441 long-term care facilities (nursing homes) including both annual surveys and the investigation of complaints and facility-reported incidents. During SFY18, the bureaus conducted 351 long-term care surveys; averaging nearly seven surveys each week.
- Medicare Services Bureau – responsible for the survey and certification of Medicare-certified facilities, such as hospitals (including critical access hospitals), home health agencies, hospice programs, end-stage renal disease units, rural health clinics and ambulatory surgery centers.
- Complaint/Incident Bureau – responsible for the review and triage of intakes for all health care facilities and programs, including facility self-reports, as well as complaints from residents/patients, family and friends, staff and other health care providers. The Bureau also has surveyors in the field who investigate complaints and incidents in long-term care facilities. During SFY18, the Bureau processed 7,308 intakes.
- Adult & Special Services Bureau – responsible for the state licensure and federal certification of Intermediate Care Facilities for Individuals with Intellectual Disabilities (including the State Resource Centers). Also responsible for regular surveys and complaint investigations in "state-only" licensed/certified entities including Assisted Living programs, Residential Care facilities, Adult Day programs, and Elder Group Homes. The bureau also conducts licensure surveys on behalf of the Iowa Department of Human Services in group living facilities for children. During SFY18, surveyors completed 418 visits related to surveys and investigations.

**SFY18 Metrics**

**Conducted**  
**1,659 complaint**  
**investigations.**



# INVESTIGATIONS DIVISION

Personnel within the [Investigations Division](#) are responsible for maintaining public assistance program integrity and accountability through the prevention, detection, and investigation of public assistance fraud and overpayments.

The Division conducts criminal, civil and administrative investigations of fraud and misconduct, working closely with other state and local partners to identify fraud, waste and abuse by Medicaid providers and public assistance recipients.

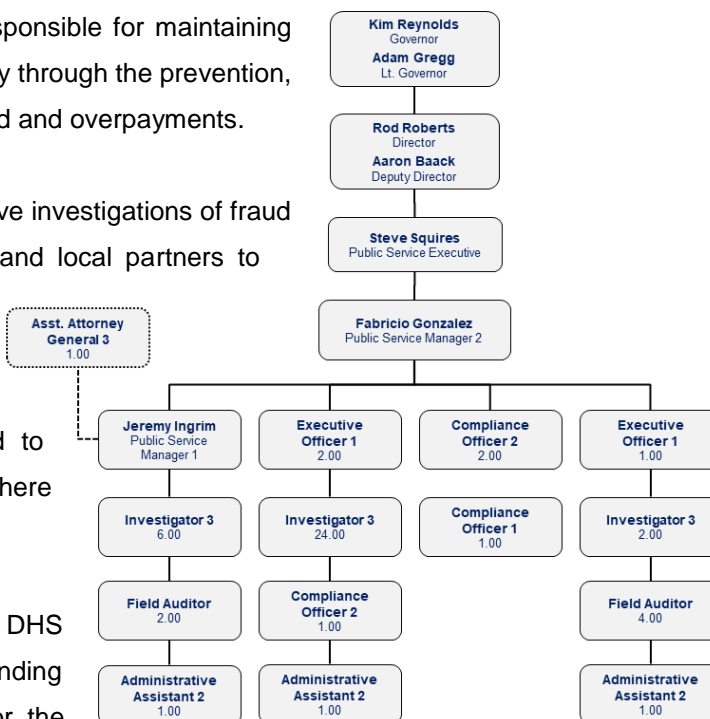
Cases investigated by the division are forwarded to federal, state and local officials for prosecution where appropriate.

Division staff also audit health care facilities and local DHS offices to ensure compliance with state and federal funding requirements, investigate licensed professionals for the Iowa Department of Public Health’s Professional Licensure Bureau, and investigate and prosecute dependent adult abuse that occurs in health care facilities. Investigators for the division have limited peace officer status pursuant to [Iowa Code section 10A.403](#).

The Division also maintains a [website](#), encouraging the public to report any fraudulent use of public assistance dollars:

- For allegations of fraud involving individuals receiving benefits, call the Iowa Department of Human Services fraud hotline at (800) 831-1394, Monday through Friday from 7:00 am to 6:00 pm.
- For Medicaid provider allegations of fraud, call the Medicaid Fraud Control Unit at (515) 281-5717.
- You may also report suspected fraud to the US Department of Health and Human Services at the [Office of Inspector General Website](#).
- For Dependent Adult Abuse Reporting, call (800) 362-2178, 24 hours a day.
- For Abuse Registry, call (800) 362-2178.

A high-level summary of the Division’s budget and FTE figures for three years is included here.



Fund Source	SFY17 actuals	SFY18 actuals	SFY19 budget
General Fund Appropriation	2,475,820	2,371,791	2,471,791
Federal Funds	818,334	925,742	1,038,636
Other Government Reciepts	2,366,362	2,208,558	2,410,000
Miscellaneous Reciepts	4,709	12,754	5,000
Appropriation Carry-Forward	58,516	-	129,314
<b>Total</b>	<b>5,723,741</b>	<b>5,518,845</b>	<b>6,054,741</b>
FTE	46	44	53



The Investigations Division is comprised of the following bureaus and units:

- **Economic Fraud Control Bureau** – responsible for review of multiple-program applications for the Supplemental Nutrition Assistance Program, Medicaid, and the Family Investment Program, as well as many other programs for suspected fraud. Investigators verify the accuracy of information submitted to DHS by the applicants. When required, investigators work closely with county attorneys and local law enforcement to gather evidence that may be used to prosecute individuals accused of defrauding the state's public assistance programs. DIA investigations assist DHS to ensure benefits are distributed to eligible individuals.

**SFY18 Metrics**  
**Responded to 5,095 referrals, saving the State \$5,772,968.**

- **Public Assistance Debt Recovery Unit** – responsible for the initiation of collections of overpayment debts owed to DHS as a result of payments made to recipients from the State's public assistance programs. During SFY18, 5,909 new claims were entered into DHS' Web-Based Overpayment Recovery system, representing a total value of \$5,525,583 in new claims. DIA investigators collect on these newly established debts through a variety of methods, including repayment agreements, judgments, wage garnishment, and income tax offsets.

**SFY18 Metrics**  
**Collected \$3,356,599 in overpayments**

- **Medicaid Fraud Control Unit** – responsible for conducting criminal and civil investigations involving allegations of fraud committed by Medicaid providers and fraud within the administration of the Iowa Medicaid program. The Unit also conducts criminal investigations involving allegations of abuse and neglect against patients and residents receiving services within healthcare facilities that receive Medicaid funds. During SFY18, the unit received 472 complaints of Medicaid fraud, suspected patient abuse or neglect, or theft of patient property.

**FFY17 Metrics**  
**Recovered \$4,794,434 in criminal & civil case resolutions.**

- **Abuse Coordinating Unit** – responsible for the detection, investigation, and prosecution of dependent adult abuse in facilities and programs. During SFY18, a total of 635 complaints received by the Department contained the potential of dependent adult abuse, resulting in 101 founded determination, and the placement of 50 individuals on the Central Abuse Registry.
- **Audits Unit** – responsible for expenditure audits at local DHS offices to determine eligibility for federal reimbursements and to ensure compliance with state and federal funding requirements. Audits also are performed at residential care facilities, nursing facilities, and residential and intermediate care facilities for the intellectually disabled to ensure that residents' funds are being properly maintained. The audits are used to verify that Medicaid reimbursement procedures meet all applicable government requirements. During SFY18, the Unit completed 228 care facility audits, and 99 local DHS office audits, identifying \$141,304 in exceptions (ineligible for Federal reimbursement).

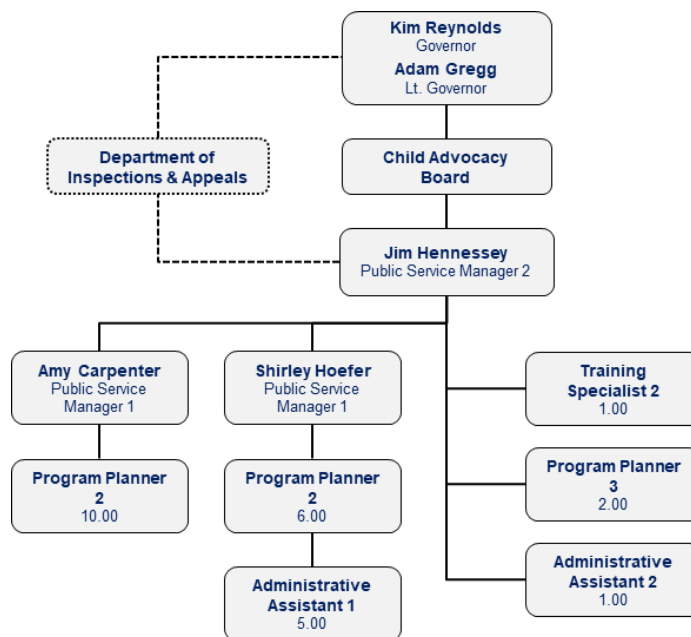


- Professional Standards Unit** – responsible for conducting professional practice investigations on behalf of the professional licensing boards under the jurisdiction of the Iowa Department of Public Health. During SFY18, the Unit completed 38 investigations for IDPH’s professional licensing boards.

## CHILD ADVOCACY BOARD

The [Child Advocacy Board](#) ensures that the foster care system is working to place each Iowa foster child in a safe, permanent home. The nine-member Board, appointed by the Governor, works to ensure that Iowa’s foster children are well cared for and that the system designed to meet their needs is doing so in the most effective manner possible.

The Board oversees local foster care review boards and the Foster Care Registry. In addition, CAB administers the State's Court Appointed Special Advocate Program, which is designed to protect the rights of Iowa’s foster children in all court-related activities.



The Board is responsible for making recommendations annually to the Governor, the General Assembly, the Supreme Court and Chief Judge of each judicial district, the Department of Human Services, and child-placing agencies on ways to improve the delivery of foster care services. Members submit recommendations on how to remove barriers that prevent the delivery of top quality foster care.

A high-level summary of the Child Advocacy Board’s budget and FTE figures for three years is included here.

Fund Source	SFY17 actuals	SFY18 actuals	SFY19 budget
General Fund Appropriation	2,578,968	2,470,605	2,570,605
Federal Funds	20,000	61,869	-
Other Government Reciepts	647,081	718,130	688,095
Miscellaneous Reciepts	8,000	15,564	2,800
Appropriation Carry-Forward	117	-	37,764
<b>Total</b>	<b>3,254,166</b>	<b>3,266,168</b>	<b>3,299,264</b>
FTE	28	28	27



# IOWA RACING & GAMING COMMISSION

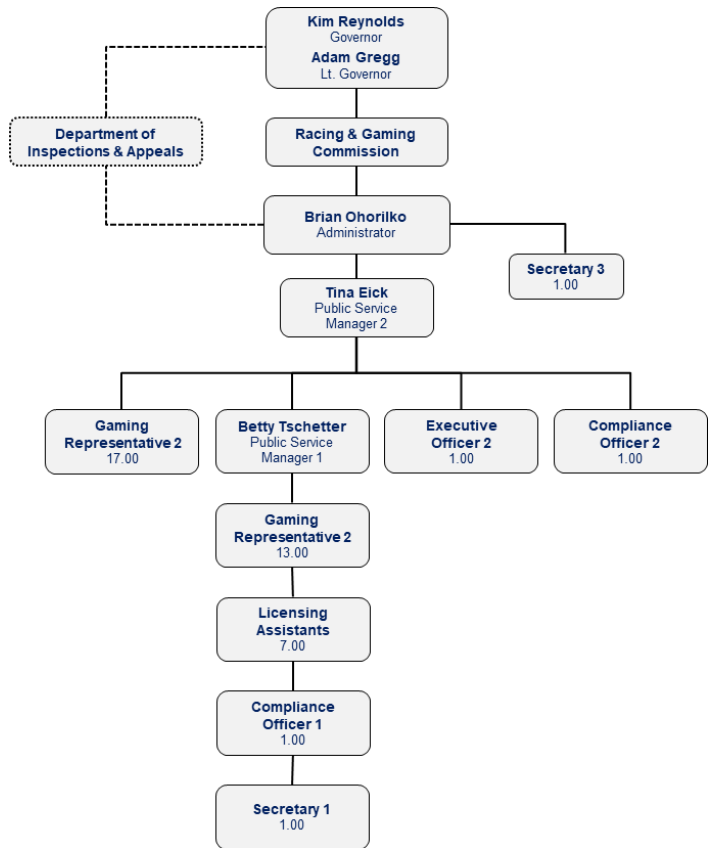
The [Iowa Racing and Gaming Commission](#) administers the laws and rules on pari-mutuel wagering and racetracks and gambling at excursion gambling boats, racetrack enclosures, and gambling structures to protect the public and to assure the integrity of licensed facilities and participants.

The Commission is responsible for determining the eligibility of applicants and issuing licenses when deemed appropriate to conduct and operate racing or gaming in Iowa.

The Commission and its staff oversee the regulation of all racetrack enclosures, excursion gambling boats, and gambling structures. Regulatory duties include assuring proper tax reporting and payments to the State Treasurer, testing of slot and table games, overseeing drug testing of racing animals, investigating alleged rule violations and taking any needed administrative actions on rule violations.

The Commission consists of five members who are appointed by the Governor and subject to Senate confirmation. Commission staff are located in Des Moines and at each state regulated gambling facility.

A high-level summary of the Iowa Racing and Gaming Commission’s budget and FTE figures for three years is included here. Note that IRGC receives no General Fund appropriations – the “appropriations from other funds” is from the Racing and Gaming Regulatory Revolving Fund.



Fund Source	SFY17 actuals	SFY18 actuals	SFY19 budget
Miscellaneous Receipts	149	4,000	6,000
Approps from Other Funds	6,194,499	6,194,499	6,492,010
<b>Total</b>	<b>6,194,648</b>	<b>6,198,499</b>	<b>6,498,010</b>
FTE	48	48	51

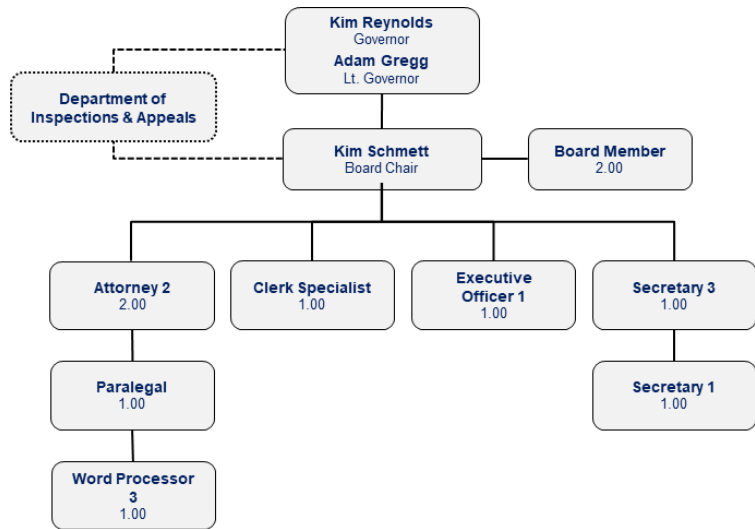


# EMPLOYMENT APPEAL BOARD

The three-member [Employment Appeal Board](#) is appointed by the Governor and serves as the final administrative law forum for state and federal unemployment benefit appeals.

The Board also hears appeals of rulings of the Occupational Safety and Health Administration and the Iowa Public Employees Retirement System.

Board members are appointed to represent employers, employees, and the general public, respectively. In addition to unemployment cases, the Board hears appeals involving peace officer issues and contractor registration requirements.



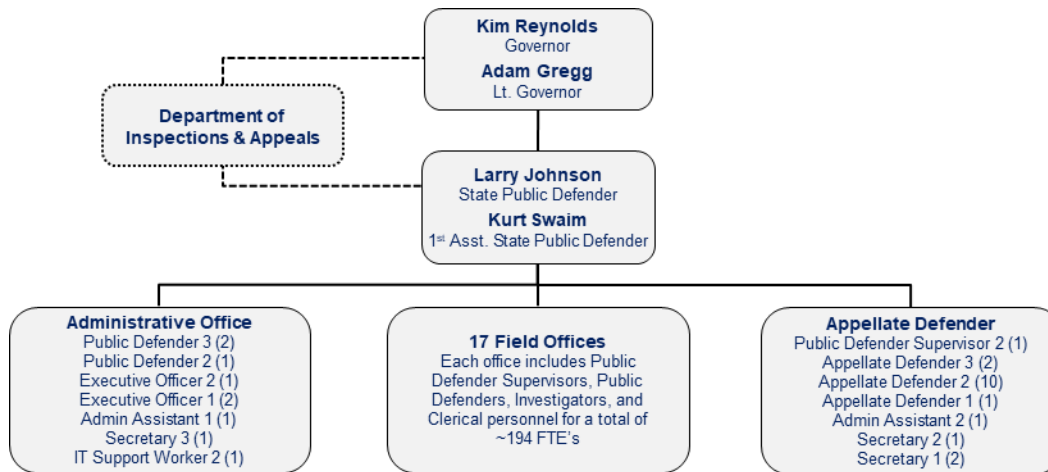
A high-level summary of the Employment Appeal Board budget and FTE figures for three years is included here.

Fund Source	SFY17 actuals	SFY18 actuals	SFY19 budget
General Fund Appropriation	40,619	38,912	38,912
Other Government Reciepts	1,109,777	1,141,997	1,135,419
Miscellaneous Reciepts	195	-	100
Appropriation Carry-Forward	5,262	-	567
<b>Total</b>	<b>1,155,853</b>	<b>1,180,909</b>	<b>1,174,998</b>
FTE	11	11	11



# OFFICE OF THE STATE PUBLIC DEFENDER

The [Office of the State Public Defender](#) is responsible for coordinating Iowa's Indigent Defense System. The Office is led by the State Public Defender (SPD), who is appointed by the Governor. More than two hundred employees in seventeen Local Public Defender Offices and the Appellate Defender's Office provide representation for indigent persons primarily in criminal and juvenile cases at the trial and appellate levels in all of Iowa's 99 counties. The Office is a hybrid system, comprised of state employees (Office of the SPD) and private/contract attorneys (Indigent Defense Fund).



- **Office of the State Public Defender** – the Office of the SPD consists of 152 attorneys, 24 investigators, 43 secretaries, and 4 administrative personnel. Staff are located in 18 field offices in 13 cities throughout the state. A high-level summary of the State Public Defender’s operational budget and FTE figures for three years is included here.

Fund Source	SFY17 actuals	SFY18 actuals	SFY19 budget
General Fund Appropriation	25,724,762	25,946,202	26,505,299
Other Government Reciepts	54,610	190,093	230,000
Miscellaneous Reciepts	3,176	254	-
Approps from Other Funds	-	66,463	88,800
Appropriation Carry-Forward	47,979	-	229,430
<b>Total</b>	<b>25,830,527</b>	<b>26,203,012</b>	<b>27,053,529</b>
FTE	212	202	223

- **Indigent Defense Fund** – in the situation of a conflict, case overload, or no available public defender, the SPD has approximately 775 contract attorneys. These attorneys are paid out of the Indigent Defense Fund. The fund pays contract attorneys, expert witnesses, court reporters, and interpreters. A high-level summary of the State Public Defender’s Indigent Defense budget for three years is included here.

Fund Source	SFY17 actuals	SFY18 actuals	SFY19 budget
General Fund Appropriation	33,901,929	35,144,448	35,144,448
Other Government Reciepts	1,677,221	1,665,075	1,632,543
Miscellaneous Reciepts	124,177	134,325	140,325
Appropriation Carry-Forward	-	735,000	-
<b>Total</b>	<b>35,703,327</b>	<b>37,678,848</b>	<b>36,917,316</b>
FTE	n/a	n/a	n/a