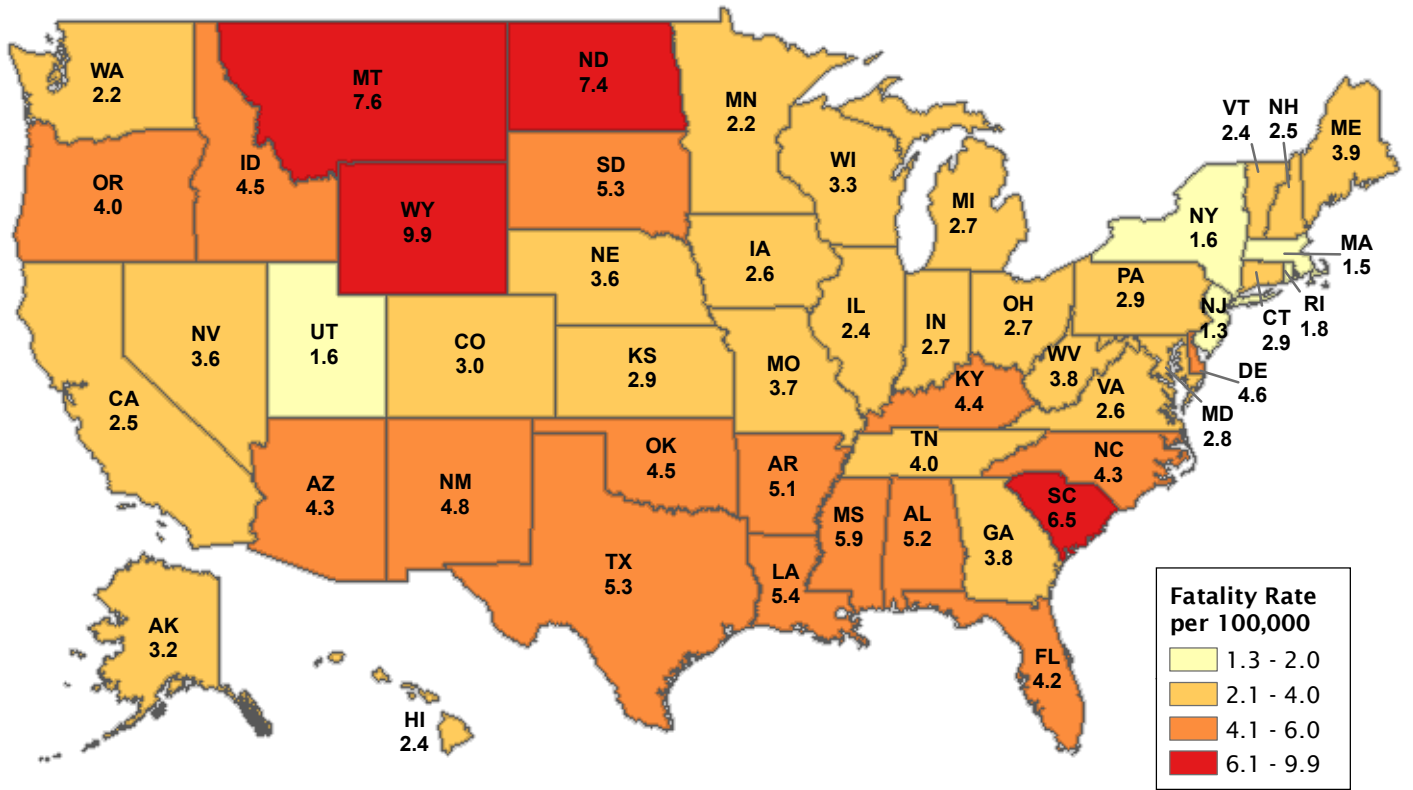
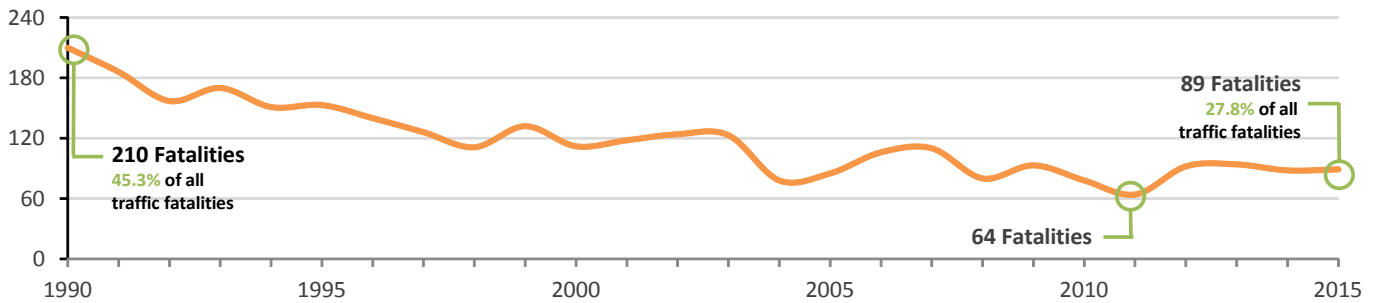


# ALCOHOL-IMPAIRED DRIVING FATALITY RATE – CY 2015



## Iowa Alcohol-Related Fatalities\* CY 1990–2015



\*Excludes fatalities with combination of alcohol and drugs.

Sources: U.S. Department of Transportation, Iowa Department of Transportation, U.S. Census Bureau 2010 Census, LSA Calculations

Iowa LSA Staff Contact: Michael Guanci (515-725-1286)  
[michael.guanci@legis.iowa.gov](mailto:michael.guanci@legis.iowa.gov)