



## IOWA STATE CAPITOL TOUR QUIZ

1. During what year was the Capitol completed?



2. What disaster took place in 1904?



3. What battleship model is encased on the first floor?



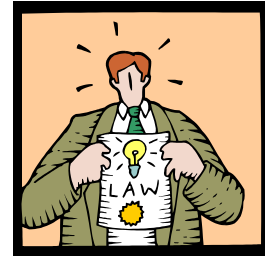
4. Who do the dolls in the first-floor display represent?

5. What is the name of the mural above the Grand Stairway?



6. What does the mural symbolize?

7. How many senators and representative are there in the Iowa Legislature?



8. What is the most common stone used in the Capitol's interior?

9. What material on the dome's exterior gives it its distinctive appearance?



10. How tall is the Capitol?

11. Where are the Civil War battle flags stored?



12. How many walkway levels are in the Law Library?

### ANSWERS

1. 1886
2. A fire destroyed the chamber of the House of Representatives on January 4, 1904.
3. The USS Iowa
4. The 41 Iowa first ladies in replicas of their inaugural gowns
5. *Westward* by Edwin H. Blashfield
6. The mural, *Westward*, symbolizes the coming of the pioneers to Iowa.
7. There are 50 senators and 100 representatives in the Iowa Legislature.
8. Marble
9. Twenty-three karat gold
10. 275 feet
11. Iowa State Historical Building
12. Five