

Standard Form For Members of the Legislature

Name of Representative Heaver, Silas Mattoon Senator _____
Represented Hardin County, Iowa

1. Birthday and place 18 Dec 1843 Chautauque County, New York
at the town of Arkwright

2. Marriage (s) date place
(1) Eldora Lewis 9 Oct 1867 Medonia, New York
(2) Sarah Catharine Lucas 17 Sept 1874 Albion, Iowa

3. Significant events for example:

A. Business Admitted to the bar in New York in 1868; he was on the Iowa
Supreme Court bench for 22 years, chairman of the Board of Trustees of
Edgewood College, Edgewood, Iowa

B. Civic responsibilities None

C. Profession Attorney; supreme court judge; newspaper editor of
The Iowa Falls Sentinel, later assistant editor

4. Church membership Methodist Episcopal

5. Sessions served 90th, 21st General Assembly 1884, 1886

6. Public Offices

A. Local Judge of the District Court 1886-1902; mayor of Iowa Falls 1873-
1876

B. State Iowa Supreme Court Judge being elected in 1901 until death; he
was Chief Justice for 3 years

C. National _____

7. Death 6 Nov 1923 Iowa Falls, Iowa; buried Union Cemetery, Iowa Falls, Iowa

8. Children By 1st wife - Clinton L. (died at age 11); Jennie Estelle (Mrs Otis A. Miller)

By 2nd wife - Walter LeRoy; George Albert; Benjamin Cory; Clarence Horton; Harold Horton;
Helen Marguerite; Caleb and Matilda (Mattoon) Heaver

9. Names of parents Caleb and Matilda (Mattoon) Heaver

Weaver, Silas Matteson

10. Education Educated in the common schools of Chautauque
County, New York, as well as the academy at
Medonia, New York graduating in 1865

11. Degrees He received an honorary degree in law from Cornell
College

12. Other applicable information Republican

- He read law in Medonia, New York
- He came to Iowa in the fall of 1868 settling in Hardin County,
Iowa at Iowa Falls, Iowa where he began practicing law.
- He lived in Iowa Falls over 50 years
- His first wife, Elora, born 8 Mar 1848, Medonia, New York, died 15 Sept 1874
Medonia, New York
- His second wife, Anna Catharine, born 17 Sept 1848, died 18 Jan 1942
buried Union Cemetery at Iowa Falls, Iowa.

Sources Log For Legislation Entries

Applicability

Source	Non Applicable	Applicable	Information obtained
- Obituary - <u>The Hardin County Ledger</u> , Eldora, Iowa, Thur			
			Nov 8, 1923, p. 1, col. 7
- <u>This Man in Iowa</u> , 1921, p. 80			
- <u>All the Counties in Hardin County Iowa</u> , p. 81			
- <u>Past and Present of Hardin County, Iowa</u> , 1911, p. 385-387			
- rootsweb.com (accessed 19 Mar 2009)			
- familysearch.org (accessed 19 Mar 2009)			
- ancestry.com (accessed 19 Mar 2009)			
- Portrait - The original of the portrait is located in the archives of the State of Iowa			
			Historical Library, 606 E. Locust, Des Moines, Iowa 50319
- Historical Department of Iowa (for in clipping files)			

SONAL
sday.
sick
vee
son John,
lers Friday
silk and
dis. 44-2
rned Sat-
ious points
en of Web-
sitors here
of Ackley
town Mon-
egan spent
evening at
iday morn-
few weeks
errald who
the past
home at
ai. c. N.
t the Busy
le and Jes-
near Mar-
nt to Des
nd Sunday
spent the
siting rela
of Robert-
lling court
ay.
rtness Jr.
ay to visit
ss.
Stonebrook
afternoon
ne.
of Omaha
esday with
ht.
d children
ay Friday
ru
hicago re-
y with his
ood.
onday eve-
o., to look
t place.
Friday for

JUSTICE WEAVER DIES TUESDAY

Justice of Supreme Court and
Pioneer Citizen of Iowa Falls,
Dies at Home

Silas Matteson Weaver, dean of the Iowa supreme court justices died at his home in Iowa Falls at 5 o'clock Tuesday morning, at the age of 79 year. His death followed an illness of about a week, and was due to infirmities incident to old age. His family had been summoned to his bedside when the seriousness of his illness became evident.

Had Justice Weaver lived until Dec. 18, he would have reached his eightieth birthday. He had been on the supreme bench for twenty-two years, being elected in 1901 to succeed Josiah Given, and he was the oldest member of the supreme bench both in years and in point of service.

The body will lie in state at the home from 10 a. m. until noon Friday. Funeral services will be conducted at 2:30 Friday afternoon from the Methodist church.

Silas Matteson Weaver was born in Chautauqua county New York, on December 18, 1845, the son of Caleb and Matilad Matteson Weaver. He was educated in the common schools of Chautauqua county, and at Fredonia, N. Y., academy, from which he was graduated in 1865. He read law in Fredonia and was admitted to the bar of New York in 1868. That fall he came to Iowa and commenced the practice of law in Hardin county, at Iowa Falls.

Card of Thanks

We wish to thank our friends and neighbors for their services and for the beautiful flowers sent during our recent bereavement, and for the many kind acts rendered during the prolonged illness of our father and brother.

(Signed)—Mr. and Mrs. Joe Mohr; Ed White and family, of Marshalltown; Art and Alf White and families, of Boone; Joe White and family of Marshalltown

Former Eldora Man Dead

Portrait
#5635

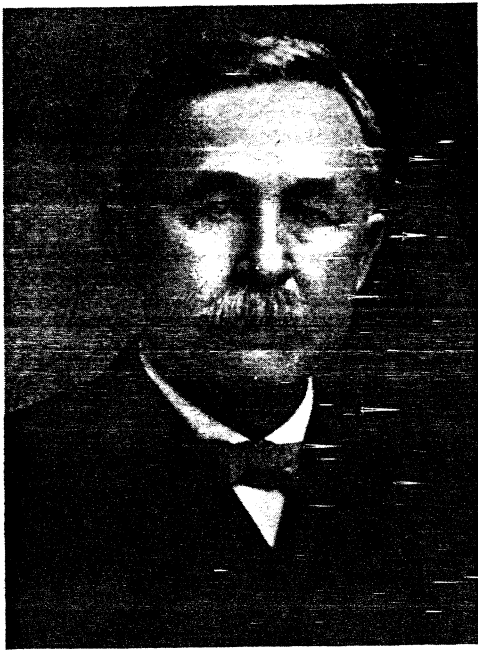


WEAVER, SILAS M.

POKRAAT
3340
3327
3320



WEAVER, SIKAS M.



SILAS M. WEAVER

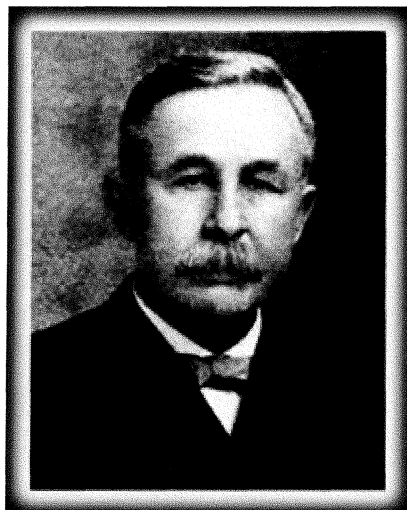
Served on the Iowa Supreme Court from January 1, 1902, until his death, November 6, 1923. For three years he was Chief Justice.

Born at Arkwright, Chautauqua County, New York, December 18, 1843. He acquired his education at Fredonia Academy, New York, was admitted to the bar at Buffalo in 1868, and in the same year came to Iowa and began the practice of law at Iowa Falls. He was a member of the House of Representatives in the Twentieth and Twenty-first General Assemblies. In 1886 he began his judicial career as Judge of the District Court, where he served until 1902, and for the next twenty-two years he continued as Justice of the Supreme Court. His written opinions while on the court are characterized by the felicity of expression and fine judicial humor. (See 116 Iowa 457.)

Justice Weaver died at Iowa Falls where he had maintained his home for more than fifty years.

IOWA JUDICIAL BRANCH

[< Previous](#) [Next >](#)



Silas M. Weaver (1902 - 1923)

Served on the Iowa Supreme Court from January 1, 1902, until his death November 6, 1923. For three years he was Chief Justice.

Born at Arkwright, Chautauqua County, New York, December 18, 1843. He acquired his education at Fredonia Academy, New York, was admitted to the bar at Buffalo in 1868, and in the same year came to Iowa and began the practice of law at Iowa Falls. He was a member of the House of Representatives in the Twentieth and Twenty-first General Assemblies. In 1886 he began his judicial career as Judge of the District Court, where he served until 1902, and for the next twenty-two years he continued as Justice of the Supreme Court. His written opinions while on the court are characterized by the felicity of expression and fine judicial humor. (See 116 Iowa 457.)

Justice Weaver died at Iowa Falls where he had maintained his home for more than fifty years.

[< Previous](#) [Next >](#)

www.judicial.state.ia.us

"Who's Who in Iowa"

AN AUTHORITATIVE BIOGRAPHICAL
DIRECTORY OF IOWA CITIZENS

VOLUME 1
EDITION 1920-21

COMPILED AND EDITED BY
FRANK C. LAKE AND LLOYD N. PRINCE



PUBLISHED AT SIOUX CITY, IOWA

tion representing a valuation in excess of \$100,000; has served as business manager and secretary of The Gate City Co. since that time; mem. Masons, Elks, Keokuk Country Club, Keokuk Club; elected dir. of Keokuk Club in 1919.

WATERBURY, Frank C., mfg. pharmaceuticals and chemicals, Des Moines; b. Freeport, Ill., April 16, 1866; Unitarian; Rep.; ed. Iowa schools; m. Coral P. Chaffin, 1892, Winton, Ia.; child., Carl C., Chloris P.; pres., Waterbury Chemical Co. of Des Moines, New York City, and New Orleans; pres., Waterbury Chemical Co., Ltd., of Toronto, Can.; pres., Waterbury Inv. Co.; pres., Greenwood Inv. Co.; pres., Des Moines Apartments Co.; pres., Polk Co. Ins. Co.; pres., Grand Inv. Co.; v-pres., Commercial Sav. Bank; v-pres., Central Natl. Fire Ins. Co.; treas., Morris Plan Bank; v-pres., Mississippi Valley Assn.; dis. pres., Arentox Co., Chicago; v-pres., Des Moines Assn. Fine Art; mem. Masonic bodies, Shrine; dir., Greater Des Moines Com.; dir. Des Moines Chamber of Commerce; chmn., Foreign Trades Bureau; mem. Circumnavigator Club, New York City; mem. Internatl. Inland Waterways Assn.; mem. Golf and Country Clubs, Des Moines Club. Former residences, past 25 yrs., Des Moines, Ia.

WATERS, Ralph Milton, Doctor of Medicine (anesthesia specialist), Sioux City; b. Trumble Co., O., Oct. 9, 1883; Prot.; Non-Partisan; ed. A. B., Western Reserve; M. D., Western Reserve; m. Louise Diehl, 1913, Cleveland, O.; child., Elva, Barbara, Darwin D.; presented paper at Interstate Soc. of Anesthetists, Cincinnati, O., 1918; also presented paper at American Assn. of Anesthetists, at New Orleans, La., 1920; mem. American Medical Assn., American Assn. of Anesthetists, Interstate Assn. of Anesthetists, Elks, Masonic bodies, Phi Rho Sigma Medical Fraternity. Former residences, Austinburg, Ashtabula Co., O., 1893-01; Cleveland, O., 1901-12.

WATKIN, Clifford R., physician, Sioux City; b. Parkersburg, Ia., May 21, 1889; Prot.; Rep.; ed. S. B., Univ. of Chicago; M. D., Rush Medical Coll.; physician specializing in diseases of the stomach and intestines; 1st lieut. Med. Corps, U. S. A., 1918-19. Former residences, Parkersburg, Ia., 1908; Chicago, 1908-16.

WATRUD, Hjalmar O., county agricultural agent, Decorah; b. Blanchardville, Wis., March 25, 1885; Luth.; ed. B. S. A. 1913, and M. S. 1914, Coll. of Ag., Univ. of Wis.; m. Amelia C. Wang, June 12, 1918, Blanchardville, Wis.; field extension work U. S. D. A. in Wis., 1914-16; same in Ill. and Wyo.; pres., literary soc. at Univ; sec., Co. Wool Growers' Assn. and Breeders Assn. Former residences, Madison, Wis., 1909-17; Blanchardville, Wis., until 1909.

WAYMACK, W. W., managing editor, Des Moines Register and Tribune, Des Moines; b. Savanna, Ill., Oct. 18, 1888; ed. A. B., Morningside Coll.; m. Elsie J. Lord, 1911, Savanna, Ill.; child., Edward R.; formerly chief editorial writer Sioux City Journal; assoc. ed., Register

and Tribune; mng. ed. same; mem. Masonic bodies, Shrine, Hyperion Club, Golf and Tennis Club, Lions Club, Ad Club, Chamber of Commerce, Automobile Club; Former residence, Sioux City, 1911-18.

WEAVER, Silas M., Judge of Supreme Court, Des Moines; b. Arkwright, N. Y., Dec. 18, 1843; Rep.; ed. com. schls.; Fredonia, N. Y., Acad.; moved to Iowa Falls, 1868; has served as state representative, Hardin Co.; elected judge of 11th Jud. Dist., 1886; re-elected, 1890-94-98; elected to supreme bench, 1901; re-elected, 1908-14-20.

WEAVER, James B., lawyer, Des Moines; b. Bloomfield, Ia., Aug. 19, 1861; Rep.; Cong.; ed. com. sch., Bloomfield, Ia.; So. Ia. Normal and Sc. Institute, Bloomfield; LL. B., State Univ. law, 1882; ex-pres. Iowa Press and Authors Club, and of Univ. Club, Des Moines; contributor to press and magazines; ex-pres. Des Moines Chamber of Commerce, of Prairie Club, Des Moines, of Des Moines Literary Ed. of Alumni Assn. S. U. Ia.; mem. Des Moines Town Planning Commission, Des Moines Playgrounds Commission, ex-pres. Des Moines Little Theatre Soc.; mem. 37th and 38th G. A. (House); secy. Ia. Commissioners Uniform State Laws; ex-pres. Golf and Country Club, Des Moines. Formerly resided in Bloomfield, Ia., Aug. 1861, to Sept. 1881; Des Moines, Ia., July 1882 to present time.

WEBSTER, Charles, railroad commissioner, Des Moines; b. near Waucoma, Ia., May 18, 1859; Rep.; mem. firm Webster Bros., raisers and shippers live stock, grain, produce; pres. several retail lumber companies in Ia., N. D., S. D., Mont.; interested in building telephone lines and exchanges; promoter of gas and electric companies in Arizona; delegate to Rep. Natl. Con., 1908; mem. State Council of Defense, State Fuel Adm. during World War; appointed R. R. comnr., Nov. 5, 1917; elected, 1918.

WENNER, Edward J., lawyer, Waterloo; b. Garrison, Benton Co., Ia., July 3, 1880; Prot.; Rep.; ed. public schl. at Garrison; grad. Tilford Collegiate Acad.; Univ. of Ia., LL. B., 1903; Yale Univ., Law School, M. L., 1904; m. Elizabeth Parrott, Aug. 17, 1910, Waterloo, Ia.; child., Frank W., Edward R., Jackson C.; elected co. atty. Black Hawk co., 1914; re-elected, 1916-18 (3 terms); mem. K. P., Elks, L. O. O. M., F. A. U. Former residences, Garrison, Ia.; Vinton, Ia.

WESSLING, D. R., banker, Lytton; b. Paton, Ia., Feb. 1, 1887; Presby.; Rep.; ed. Grand Jct., H. S.; Ia. Business Coll., Des Moines; grad. from both; m. Cora E. Thomson, Jan. 8, 1916, Grand Junction, Ia.; child., Daniel R. Jr.; with Citizens Bank at Grand Jct., until age of 25; at age of 28 organized Lytton Sav. Bank, Lytton, Ia.; holds controlling interest and has always been its pres.; pres., Auburn (Ia.) Sav. Bank; active on various war work committees; mem. Masonic bodies, Shrine. Former residences, Paton, Ia.; until 9 yrs. old; moved to Grand Jct., Ia., with parents; there until 1915.

977.9
B48

THE BENCH AND BAR

OF

IOWA

Illustrated with Steel and Copper Engravings

5496

CHICAGO AND NEW YORK
AMERICAN BIOGRAPHICAL PUBLISHING CO.

1901

nership lasted until 1888, when it was dissolved. One year and a half later he again entered into partnership with Mr. Blair, which lasted until Mr. Blair was elected district judge, in 1895. Mr. Dunham became a member of the firm when Judge Blair withdrew from it, the name being changed to Norris & Dunham. In 1898 E. H. Styles entered the firm. Their practice has been general, and they have been engaged in a large number of important cases. Mr. Norris is a Republican, and was a member of the Twenty-fourth General Assembly. Mr. Norris was lieutenant-colonel on Governor Jackson's staff.

HON. SILAS M. WEAVER,
IOWA FALLS.

Silas M. Weaver, judge of the District Court of the eleventh judicial district of Iowa, is a native of Chautauqua county, N. Y., where he was born on the 18th of December, 1845. His parents, Caleb and Matilda Weaver, were both natives of the state of New York.

Our subject received an academic education in Fredonia, N. Y., where he taught school for a time, and in 1868 was admitted to the bar at Buffalo, N. Y. In the latter year he came to Iowa, locating at Iowa Falls, and here he has since remained and won for himself a high place among the honored men of his city and state.

Judge Weaver has always been affiliated with the Republican party. He served as mayor of Iowa Falls; for three years was editor of the Iowa Falls Sentinel, and later, associate editor of The Citizen. He was a member of the state house of representatives in the twentieth and twenty-first general assemblies; in the former session he served as chairman of the judiciary committee and in the latter session as chairman of the board of managers in the impeachment trial of State Auditor John L. Brown. In 1886 he was elected judge of the eleventh judicial district, being re-elected in 1890, 1894 and 1898. He was the Republican nominee for judge of the Supreme Court in 1891, but, with the balance of the ticket, was defeated at the polls.

The following, from one of the prominent attorneys of the district over which Judge Weaver has so long presided, is but a summary of the high esteem in which he is held:

"While a member of the State Legislature Judge Weaver's letters to



S. M. WEAVER.

the paper of which he was editor were model reports of the proceedings of the Legislature and other state offices. There is probably no other man in Iowa who has a better command of elegant, forceful English. This power has been of much value to him in his judicial position. As a judge he is a lover of equity and fair dealing. He deals with law, not merely in the abstract, but applies its principles with discretion and judgment, and seeks the substantial, rather than the technical, reason. By means also of his thorough knowledge of the law, he performs his professional work with an ease and naturalness that ranks him among the leaders of the legal profession in the state. As presiding judge he has the rare power of grasping the controlling facts and marshalling them into logical form. He would be an ornament to the supreme bench or any other tribunal. He is a man endowed by nature with a legal and judicial mind, and has engaged in his professional work with a zeal and love that could not but lead him to the highest attainment and win for him an honorable name."

Judge Weaver was married in 1867 at Fredonia, N. Y., to Miss Eldora Lewis, who died in 1872. In 1874 he was again married to Miss Sarah C. Lucas at Albion, Iowa, and of this union there are five children.

ERNEST HERRICK.

CHEROKEE.

Ernest Herrick, one of the substantial lawyers and citizens of Cherokee, was born in Linden, N. Y., August 19, 1848, to Zebulon and Sarah M. Herrick, natives, respectively, of Vermont and New York. The father was a blacksmith by trade. In 1854 the family moved west, settling at La Crosse, Wis., where they remained about a year and a half, and thence to Mantorville, Dodge county, Minn. In the public schools of the last-named place our subject received his preliminary education, after which he attended a private school for two years. At fifteen he became a clerk in a drug store, and followed mercantile pursuits until 1867, when the family removed to Eddyville, Iowa. Here he worked in his father's shop, and also clerked, and in 1869 came to Cherokee, where he was interested in a small grocery store for a short time, and afterward went into the drug business. He sold the latter in 1873, and began the study of law in the office of Eugene Cowles, but after a few weeks he

PAST AND PRESENT
OF
HARDIN COUNTY
IOWA

HON. WILLIAM J. MOIR
Editor in Chief

ILLUSTRATED

1911
B. F. BOWEN & COMPANY
INDIANAPOLIS, INDIANA

BIOGRAPHICAL

HON. SILAS M. WEAVER.

In the largest and best sense of the term, Hon. Silas M. Weaver, of Iowa Falls, Hardin county, judge of the supreme court of Iowa, is distinctively one of the notable men of his day and generation, and as such is entitled to a conspicuous place in the annals of his city, county and state. As a citizen he is public-spirited and enterprising, as a friend and neighbor he combines the qualities of head and heart that win confidence and command respect and as a lawyer and jurist, who has a comprehensive grasp upon the philosophy of jurisprudence, and who has brought honor and dignity to the position he fills with such distinguished success, he is easily the peer of his professional brethren of the Iowa bar. It is scarcely less than supererogation in outlining the leading facts in his life to refer to him as an attorney in the ordinary phraseology which meets requirements when dealing with the average member of the legal profession. He has indeed been much more than eminently successful in his legal career, as those at all familiar with his long, praiseworthy career at the bar and his honorable course on the bench, will readily concede. He is a master of his profession, a leader among men distinguished for the high order of their legal ability, and his lofty attainments and ripe judgment have rendered him an authority on all matters involving a profound knowledge of jurisprudence and vexed and intricate questions growing out of its interpretation.

Judge Weaver is a scion of a sterling old family of the Empire state and his birth occurred in Chautauqua county, New York, December 18, 1843. He is the son of Caleb and Matilda (Matteson) Weaver. The paternal grandfather was also named Caleb and he was in the New York militia during the war of 1812.

Judge Weaver's boyhood was spent on a farm in his native county, where he laid up a splendid reserve force of potential energy by outdoor life in the fields during the crop seasons, attending the common schools during the winter months, later taking a course at Fredonia Academy. While a mere boy he conceived a strong liking for the law and the few hours he could save

from his labors and regular school work were devoted to a careful reading of Blackstone, the early hours of the morning not infrequently finding him poring over the pages of his much prized volume, and in due time he obtained a sound, practical knowledge of the principles of law, which, with his recognized judgment, sound common sense and eminent fairness, gave promise of his later achievements in his chosen profession. Later he was enabled to devote himself exclusively to the study of law at Fredonia, New York, and on May 4, 1868, he was admitted to the bar at Buffalo. Believing that the new country of Iowa offered peculiar advantages at that time, he came to Iowa Falls, where he located for the practice of his profession in August, 1868, and this has since remained his home. He was successful from the first and soon enjoyed a large and ever-growing clientele, in due course of time taking rank with the leading lawyers of a locality widely noted for the high order of its legal profession.

Politically, he is a Republican and has ever been loyal to its principles and party leaders began to be attracted to him in early life and he has been called upon to fill many positions of public trust. From about 1873 to 1876 he was mayor of Iowa Falls, and in 1883 he was elected to the state Legislature, serving two terms in the twentieth and twenty-first General Assemblies, in 1884 and 1886, in which he made his influence felt for the good of his constituents. In the fall of 1886 he was elected judge of the district court, and his record was so satisfactory that he was re-elected in 1890, for a third term in 1894 and a fourth term in 1898. In this capacity he attracted attention far beyond the bounds of his jurisdiction and in the election of 1902 he was elected to the supreme bench and re-elected in 1908 and he is still an incumbent of this important office. During his long career on the bench Judge Weaver has ever discharged his official functions in an able and satisfactory manner and won recognition among the learned and distinguished jurists of the state. As a judge he brought to the bench a mind enriched by years of close study and profound research, which eminently qualified him for the duties of the position, and among lawyers and litigants as well as the public at large he is held in high esteem. By his courage and energy he climbed steadily and persistently and stood firmly upon each rung of the ladder until he could reach the next above and plant himself firmly thereon. Whatever of success he has achieved during his long and strenuous career has been due to careful preparation, a high sense of justice, candor as a counselor, a religious regard for the truth and courteous demeanor and gentlemanly conduct in all relations with his fellow men.

The domestic life of Judge Weaver began on October 9, 1867, when he was united in marriage with Eldora Lewis, of Fredonia, New York, whose untimely death occurred in 1872, leaving a son, Clinton L., who followed her to the mystic country when eleven years of age; also a daughter, now Mrs. Jennie Miller, who resides at Champaign, Illinois. Judge Weaver was again married on September 17, 1874, to Sarah C. Lucas, of Albion, Iowa, and four children of this union are now living, namely: Walter L., George E., Helen M., all of Iowa Falls, and Ben C., of Champaign, Illinois.

Cornell College conferred the degree of Doctor of Laws upon Judge Weaver in 1908, and in that year he was a delegate to the general conference of the Methodist Episcopal church at Baltimore, Maryland. He and his wife are active members of the church of this denomination at Iowa Falls, and he has been a trustee in the same many years. Fraternally, he belongs to the Masonic lodge at Iowa Falls, also the Knights Templar commandery at his home town and the Royal Arch chapter at Eldora.

As a practitioner or on the bench no charge or suspicion of any wrongdoing has ever tarnished the Judge's name or marred his official record, his personal honor having never been compromised and his private life always pure and free from fault. His friendships are warm, steadfast and his sterling worth renders him a power for good among all with whom he comes into contact.

IDO FRANKLIN MEYER.

Of high professional and academic attainments and ranking among the foremost educators of the state, Ido Franklin Meyer, the efficient and popular president of Ellsworth College, Iowa Falls, Hardin county, has achieved marked distinction in the noble work to which his talents and energies have so long been devoted, and, judging by the past, it is safe to predict for him a future of still greater usefulness and honor. Not only as a teacher and manager of schools has he made his presence felt, but as a citizen in the daily walks of life his influence has tended to the advancement of the community and the welfare of his fellow men, the several responsible positions to which he has been called from time to time bearing testimony to his ability to fill worthily high and important trusts. His name with eminent fitness occupies a conspicuous place in the profession which he adorns and his career, presenting a series of successes such as few attain, has gained for him much more than



DISCOVER M

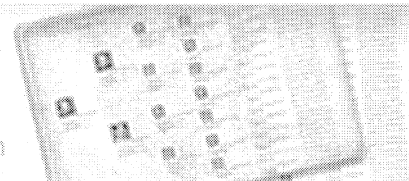
Home	Searches	Family Trees	Mailing Lists	Message Boards	Web Sites	Passwords	H
------	----------	--------------	---------------	----------------	-----------	-----------	---

FAMILY HISTORY POSTERS

"I just received my six-generation pedigree chart. FABULOUS.
It will hang proudly in our home."

—Sharon Davis, Redmond, WA

[Start your poster](#)



Catherine Edwards

Entries: 895 **Updated:** Sat Aug 25 17:54:09 2001

Contact: Sally Stevens stevens@iml.net

[Index](#) | [Descendancy](#) | [Register](#) | [Pedigree](#) | [Ahnentafel](#) | [Download GEDCOM](#) | [Add Post-em](#)

- *ID:* I19012194
- *Name:* Silas Matteson WEAVER
- *Given Name:* Silas Matteson
- *Surname:* Weaver
- *Sex:* M
- *Birth:* 19 DEC 1844 in Arkwright, Chautauqua, N.Y.
- *Death:* 6 NOV 1923 in Iowa Falls, IA
- *Birth:* 19 DEC 1844
- *Note:* REFN674

Father: Caleb WEAVER b: 23 AUG 1800 in Greenfield, Saratoga, New York

Mother: Matilda MATTESON b: 20 MAR 1806 in Hoosick, Rensselaer, N.Y.

Marriage 1 Sarah Catherine LUCAS b: 17 SEP 1847 in Lincoln, Logan, IL

- *Married:* 17 SEP 1874 in Albion, IA

Children

1. Walter Le Roy WEAVER b: 1 JAN 1877
2. George Eldred WEAVER b: 3 AUG 1878
3. Benjamin Cory WEAVER b: 10 APR 1880 in Iowa Falls, Hardin, Iowa
4. Clarence Horton WEAVER b: 2 MAR 1884
5. Harold Morton WEAVER b: 2 MAR 1884
6. Helen Marguerite WEAVER b: 3 MAY 1888

ANCESTRY.COM
IS A
GOLD MINE
GET A MAP
[CLICK HERE](#)
for a proven resource to locate those hard-to-find ancestors.

Marriage 2 Eldora LEWIS

- *Married:* 1867 in Fredonia, NY

Children

1. Clinton WEAVER b: 2 JAN 1869
2. Clinton WEAVER b: 23 JAN 1869
3. Jennie Estelle WEAVER b: 24 MAR 1872

[Index](#) | [Descendancy](#) | [Register](#) | [Pedigree](#) | [Ahnentafel](#) | [Download GEDCOM](#) | [Add Post-em](#)

 [Printer Friendly Version](#)  [Search Ancestry](#)  [Search WorldConnect](#)  [Join Ancestry.com Today!](#)

[WorldConnect Home](#) | [WorldConnect Global Search](#) | [WorldConnect Help](#)

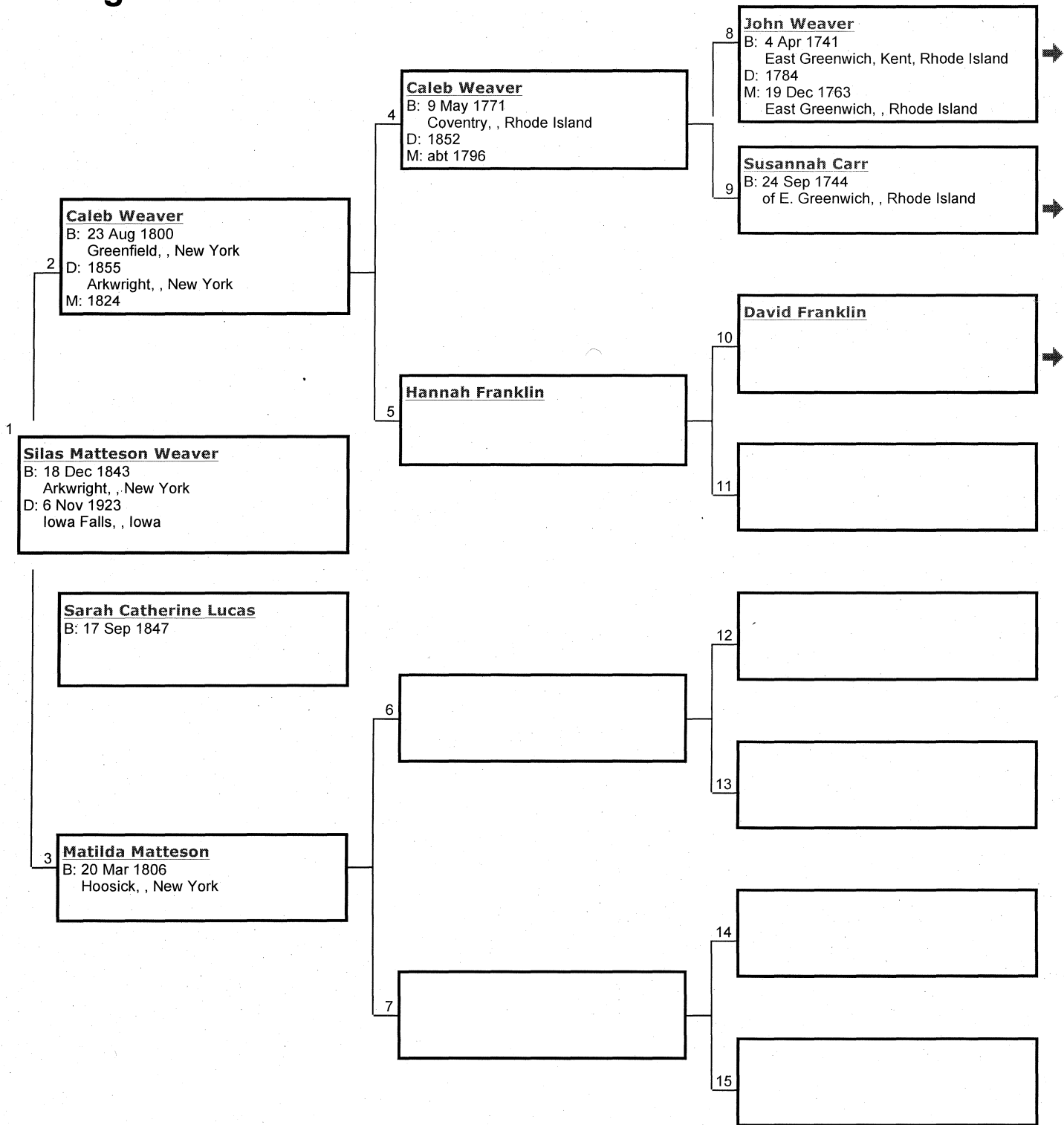
RootsWeb.com, Inc. is NOT responsible for the content of the GEDCOMs uploaded through the WorldConnect Program. If you have a problem with a particular entry, please contact the submitter of said entry. You have full control over your GEDCOM. You can change or remove it at any time.

RootsWeb is funded and supported by [Ancestry.com](#) and our loyal RootsWeb community. [Learn more.](#)

[About Us](#) | [Contact Us](#) | [Acceptable Use Policy](#) | [PRIVACY STATEMENT](#) | [Copyright](#)
Copyright © 1998-2009, MyFamily.com Inc. and its subsidiaries.

Pedigree Chart

FamilySearch™ Pedigree Resource File




© 1999-2005 by Intellectual Reserve, Inc. All rights reserved. English approval: 3/1999

[Home](#)[Family Tree](#)[Search](#)[Print & Share](#)[Community](#)[DNA](#)[Learning Center](#)[Store](#)

Try out the New Ancestry Search

You searched for **Silas M. Weaver in Iowa**[All 1870 United States Federal Census Results](#)

Page Tools

 [Save record to someone in my tree](#) [Save record to my shoebox](#) [Comments and Corrections](#) [E-mail image to a friend](#) [View printer-friendly](#)

Make a Connection

Not sure where to start? Often it's helpful to contact others who share your research interests:

[Find others searching for Silas M Weaver](#)

1870 United States Federal Census

Name: **Silas M Weaver**

Estimated Birth abt 1845

Year:

Age in 1870: 25

Birthplace: New York

Home in 1870: Hardin, Hardin, Iowa


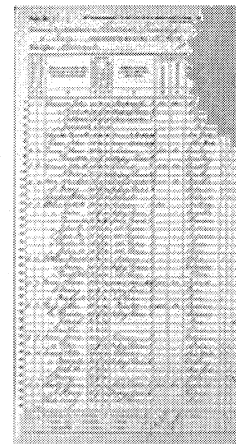
Race: White

Gender: Male

Value of real estate: [View Image](#)

Post Office: Eldora

Household Members:	Name	Age
	Silas M Weaver	25
	Eldora L Weaver	21
	Clinton L Weaver	1
	Geo W Lewis	23
	Cordelia J Weaver	24

 [View original image](#) [View blank for](#)

Save This Record

Attach this record to a person in your tree as a source record, or save for later evaluation.

Source Citation: Year: 1870; Census Place: Hardin, Hardin, Iowa; Roll: M593_394; Page: 440; Image: 394.

Source Information:


Ancestry.com. 1870 United States Federal Census [database on-line]. Provo, UT, USA: The Generations Network, Inc., 2003. Original data: 1870.


Try out the New Ancestry Search

You searched for **Silas M. Weaver in Iowa**

 [All 1900 United States Federal Census Results](#)

Page Tools

 [Save record to someone in my tree](#)

 [Save record to my shoebox](#)

 [Comments and Corrections](#)

 [E-mail image to a friend](#)

 [View printer-friendly](#)

Make a Connection

Not sure where to start? Often it's helpful to contact others who share your research interests:

[Find others searching for Silas M Weaver](#)

1900 United States Federal Census

Name: **Silas M Weaver**

Home in 1900: **Hardin, Hardin, Iowa**

Age: **54**

Birth Date: **Dec 1845**

Birthplace: **New York**

Race: **White**

Ethnicity: **American**

Gender: **Male**

Relationship to head-of-house: **Head**

Father's Birthplace: **New York**

Mother's Birthplace: **Vermont**

Spouse's Name: **Sarah**

Marriage Year: **1868**

Marital Status: **Married**

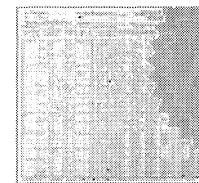
Years Married: **32**


Residence : **Iowa Falls Town, Hardin, Iowa**

Occupation: [View on Image](#)

Neighbors: [View others on page](#)

Household Members:	Name	Age
	Silas M Weaver	54
	Sarah Weaver	50
	Walter L Weaver	23



 [View origin image](#)

 [View blank](#)

Individual Record

FamilySearch™ Pedigree Resource File

Silas Matteson Weaver Compact Disc #128 Pin #2346670
Sex: M

[Pedigree](#)

Event(s)

Birth: 18 Dec 1843
Arkwright, , New York
Death: 6 Nov 1923
Iowa Falls, , Iowa

Parents

Father: [Caleb Weaver](#) Disc #128 Pin #2346617
Mother: [Matilda Matteson](#) Disc #128 Pin #2346660

Marriage(s)

Spouse: [Eldora Lewis](#) Disc #128 Pin #2346838
Marriage: 1867
Fredonia, , New York
Spouse: [Sarah Catherine Lucas](#) Disc #128 Pin #2346845
Marriage:

Notes and Sources

Notes: None
Sources: None

Submitter

Ila Mae Fairbourn DAHL
850 W. 100 South Orem, Utah 84058

Submission Search: [2386076-0325106160609](#)

URL:

CD-ROM: Pedigree Resource File - Compact Disc #128

CD-ROM Features: Pedigree View, Family View, Individual View, Reports, Downloadable GEDCOM files, Notes and Sources.

[Order Pedigree Resource File CD-ROMS](#)

About FamilySearch Pedigree Resource File

The Pedigree Resource File is a new lineage linked database of records available on compact disc containing family history records submitted by individuals through FamilySearch Internet Genealogy Service. Family information is organized in family groups and pedigrees and includes submitted notes and sources. Many charts and reports can be printed from this data. Each disc contains about 1.1 million names. With the publication of every five discs, a master index for those discs will be published and packaged with that set of discs. With the publication of every 25 discs, a master index for those discs will also be published and packaged with that volume of discs. Discs may be purchased as sets or volumes.

Please Note

Submitter information is provided to help in the coordination of personal family history research. Use of this information for any other purpose, including marketing, advertising, or commercial solicitation, is strictly prohibited.

Outline of Personal History of *Silas M. Weaver,*
RESIDENCE *Iowa Falls, Ia.*

Kindly furnish on this sheet the necessary data for a personal sketch and return at your early convenience. Every question is important.

EDGAR R. HARLAN, CURATOR

The Historical Department of Iowa

DES MOINES, IOWA

(This form is for use in collecting data on deceased as well as living persons. Appropriate alterations may be made in matter below.)

1. Name in full (all names)..... *Silas Matheson Weaver*
2. Chief occupation or profession..... *Lawyer*
3. Former occupation or profession.....
4. Date and place of beginning each.....
5. Present residence address..... *Iowa Falls Iowa*
6. Present business address..... *Iowa Falls Iowa*
7. Date of birth..... *December 18, 1843*
8. Place of birth..... *Arkwright, Chautauque Co New York*
9. If born abroad, where.....
10. Emigrated to America, when.....
11. First migrated to what state and county, whether born abroad or in America.....
12. Emigrated the second time to what state or county.....
13. Further emigration, if any.....
14. Education. Give name and location of rural, high, business or technical school, college or university.....
Rural School, District No 4 Arkwright-Chautauque Co. N.Y.
Fredonia Academy Fredonia New York
15. Date of graduation and degree if any..... *Not a graduate, Honorary*
degree LL D Cornell College Iowa

16. Place of death.....
17. Date of death.....
18. Place of burial.....
19. Name of father in full (all names)..... *Caleb Deane*
20. Occupation of father..... *Farmer*
21. Full Maiden name of mother (all names)..... *Matilda Matteson*
22. Residence when married..... *Arkwright Chautauque Co NY*
23. Military service, if any (exact dates)..... *None*
24. Political offices, (from the smallest to the largest, with dates)..... *Judges of the Peace 1870 - 1880*
Mayor of Iowa Falls 1872 - 1876; Representative from
Harrison Co in 20th and 21st General Assembly; Judge District
Court 11th Judicial Dist - of Iowa 1886 - 1902; Judge Supreme
Court of Iowa 1902 and re-elected 1908
25. Director or trustee of financial, religious and educational institutions.....
Chairman Board of Trustees of Ellsworth College Iowa Falls
from the date of its incorporation
26. Politics..... *Republican*
27. Religious denomination if any..... *Methodist Episcopal*
28. Religious preference if non-affiliated with a denomination.....
29. Member of what societies or associations of learning.....
30. Member of what secret organizations, with honors or offices held, with dates..... *Massachusetts Lodge*
A F W M Iowa Falls Ia, Congregational Chapter Eldora Iowa
St Elmo Commandery Iowa Falls Ia
31. Member of what clubs if any.....
32. Belonged to what firms (give names in full and dates if possible).....
33. Officer or director in any corporation.....
34. Enclose business card if possible.....
35. Enclose photograph and autograph.....

36. Author of books or pamphlets, with titles and publishers in full and dates of publication.....

37. Miscellaneous.....

FAMILY HISTORY

1. To whom married..... El Doru Lewis
2. Date of marriage..... October 9, 1867
3. Place of marriage..... Fredonia New York
4. Date of his or her birth..... November 28, 1848
5. Place of his or her birth..... Fredonia New York
6. Religious denomination..... Baptist
7. Date of his or her death..... Fredonia New York
8. Place of his or her death..... → September 1, 1872
9. Place of his or her burial..... Fredonia N.Y.
10. Father's full name..... George W Lewis
11. Born where and when.....
12. Occupation of his or her father..... Merchant
13. His or her mother's full name..... Ebija Wheelock
14. Born when and where..... About 1825 Worcester Massachusetts
15. Parents' residence at time of their marriage..... Buffalo N.Y.
16. Miscellaneous remarks on their family.....

1. To whom married second time Sarah Catherine Lucas
 2. Date of marriage September 17, 1874
 3. Place of marriage Albion Iowa
 4. Date of his or her birth September 17, 1848
 5. Place of his or her birth Logan Co. Illinois
 6. Religious denomination Methodist Episcopal
 7. Date of his or her death
 8. Place of his or her death
 9. Place of his or her burial
 10. Father's full name Abraham Lucas
 11. Born where and when Pennsylvania April 1823
 12. Occupation of his or her father Carpenter
 13. His or her mother's full name
 14. Born when and where
 15. Parent's residence at time of their marriage
 16. Miscellaneous remarks on their family

CHILDREN OF Silas Mattoon Weaver AND Eldora Lewis his wife

NAME	PLACE OF BIRTH	DATE	PLACE OF DEATH	DATE	MARRIED TO WHOM	WHERE	DATE
Clinton Lewis	Iowa Falls Ia	1/24/69	Frederic Ia	7/14/80			
Jennie Estelle	" "	8/24/72			Otto F Miller	Iowa Falls Ia	1893

CHILDREN OF Silas M Weaver AND Sarah C Lucas his wife

Walter L	Iowa Falls Ia	1/1/77			Nellie Pruden	Iowa Falls	1901
George E	" "	8/3/78	Clear Lake Ia	9/19/11			
Ben C	" "	4/3/81			Jennie Hall	Iowa Falls	1902
Harold M	" "	3/3/84	Iowa Falls Ia	9/20/98			
Clarence	" "	2/3/84	Iowa Falls Ia	4/1/84			

SIGNATURE

DATE