

Standard Form For Members of the Legislature

Name of Representative Reed J. Fredericks Senator _____
Represented Story County, Iowa

1. Birthday and place 17 Oct 1863 near Zearing, Story County, Iowa

2. Marriage (s) date place

Emily J. Deibel 3 Jan 1869 Zearing, Iowa

3. Significant events for example:

A. Business _____

B. Civic responsibilities _____

C. Profession Teacher; School Director

4. Church membership _____

5. Sessions served 26th General Assembly 1896

6. Public Offices

A. Local Story County Superintendent of Schools for 2 terms in early 1890's

B. State _____

C. National _____

7. Death 19 Jan 1939 Canby, Minnesota; buried Nevada Cemetery, Nevada, Iowa

8. Children Leff; Joyce ('Mrs. Cornell), preceded in death by an infant son 26 Sept 1893)

9. Names of parents Jesse and Isabella (Rousseau) Reed

Reed, J. Fredericks

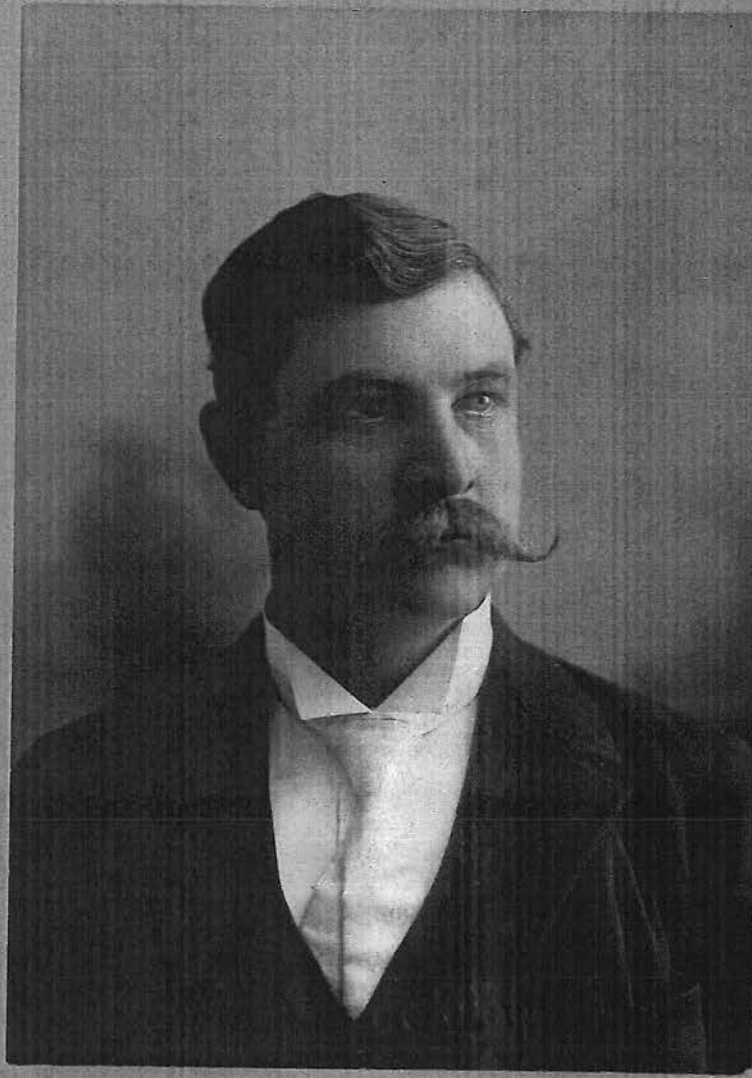
10. Education He was educated in schools of Story County, Iowa

11. Degrees He had some college work, but not named.

12. Other applicable information

Republican

- He moved to Minneapolis when he went into the Federal Service.
- Wife, Emily J., born 13 Aug 1865, died 31 Jan 1932, also buried in Nevada Cemetery, Nevada, Iowa



Pearson,

Des Moines, Ia.

*J. F. Reed
Nevada, 5th Dist.*

With but a few exceptions all school districts of the county—own independent, consolidated and rural, was represented in an all-county dinner meeting held at the Story hotel here last evening in connection with the January meeting of the Story County School Administrators' association.

In several cases the entire membership of the board was present for the affair which was presided over by President C. R. Laughridge, superintendent of the later schools. The register showed seventy-six present.

The principal address of the evening's after dinner program was by Charles E. Miller of Albia, president of the Iowa School Board association and vice president of the National School Board association who had as his subject for a most interesting talk "Our Neighbors' Kids." Mr. Miller is an Albia attorney who has been on the teacher's committee of the school board in his hometown over a score of years.

The talk was a strong one and carried a valuable message to the entire score school men and women present at the Story county meeting.

Dr. Severson of the Slater school board expressed the thanks of the board group for the entertainment and also spoke in most commendable terms of the valuable contribution that the county superintendents and other leaders like to the community life of the county.

Taken all together it was one of the most interesting and profitable meetings held in the county by the people at the helm of our school system.

The program as presented, following the delightful three-course dinner, was as follows:

Supt. Laughridge, President of Story County School Administration Association presiding.

Quadrille: "Hoo-Dah-Day" arranged by William; "Sophomoric Philosophy" by Raymond Dvorak—Max Hanson, Bob Ostrem, Ivan G. Dick, Handsaker, accompanied by Evelyn Pope.
Solo: "The Old Refrain" by Kreisler, Mrs. E. P. Schindler

Donald Smith, younger son of Dr. and Mrs. F. S. Smith of 836 Fourth street, Nevada.

J. F. Reed Died In Minnesota; Funeral Sunday

J. F. Reed, former Story county resident, but for many years a resident of Minnesota, died at his home at Canby, Minn., Friday and the body will be brought to Nevada for funeral services and burial.

The body is expected to arrive here Saturday night over the Rock Island and the funeral will be held Sunday afternoon at 2:00 at the Morfoot Funeral home with burial in the family lot in the Nevada cemetery by the side of the wife who passed away a number of years ago. He leaves one son Leff Reed who lives in the west, and a daughter Mrs. Joyce Cornell of Canby, Minn., at whose home he died.

Mr. Reed, a son of an Illinois Grove pioneer family was born northeast of Zearing, received his education in the schools of the county, later had some college work, served two terms as county superintendent of schools in the early '90s, represented Story county in the lower house of the 26th General Assembly and a special session; shortly afterwards went into the Federal Service, moved from here to Minneapolis and had lived in Minnesota the most of the time since.

Besides his son and daughter, he leaves brothers Ed and Clay Reed of Zearing, Claude Reed of Eldora and Frank Reed whose whereabouts are unknown here.

Mr. Reed visited Zearing friends and relative a few months ago and during that time was in Nevada for a few hours greeting old friends.

Ringsted Abandons Airport Project

Des Moines, Ia., Jan. 20—INS—Attorney General Fred D. Everett today ordered county attorneys throughout the state to "crack down" on violations of state gambling, beer and liquor laws.

In a form letter to all county attorneys he advised them that they represented "the first line of defense against all criminal activities.

Everett called their attention to the sections of the code covering gambling and added:

"These statutes as amended are very broad, and bring within their terms all gambling devices, including slot machines and any other machines used for gambling, or any slot machines or device with an element of chance attending such operation." This, in our opinion, includes punch-board, punch cards, and every device of every kind and character 'with an element of chance attending such operations.'

He then called attention to the sections of the code relating to liquor enforcement which designate the county attorney as the head of the enforcement division of the state liquor control commission, and the designation of sheriffs and police officers as supplementary aids to the county attorneys."

"It is now, and shall be," Everett said, "the continuing policy of the attorney general's office to insist upon the enforcement at all times of the laws of the state as they may be enacted by the legislature, and to this end we ask your cooperation, and this office will give you its full support.

"You will, of course, realize that specific reference to the above statutes should not be construed as any intimation that all the other criminal laws are not to be strictly enforced. We invite any service you may require of this office or of the state bureau of investigation to this end."

Threat Made to Bomb Restaurant

today
High
N
—h
wea
30.
nor
per
S
high
wea
33.
C
high
clea
S
high
clea
ling
pla
per
high
in
wea
34.
E
ids)
wea
22.
Nor
high
wea
per
Ad
Ma
Die
Special
Max
F. Pe
Maxw
the h
Howar
Thurs
Fun
pioneer
Lee co
neighb
his life
well
Sunda
son Pe
will be
Peoria
Mr.
sons H
and Fr
light
Miss H

17.00

Story County, Iowa

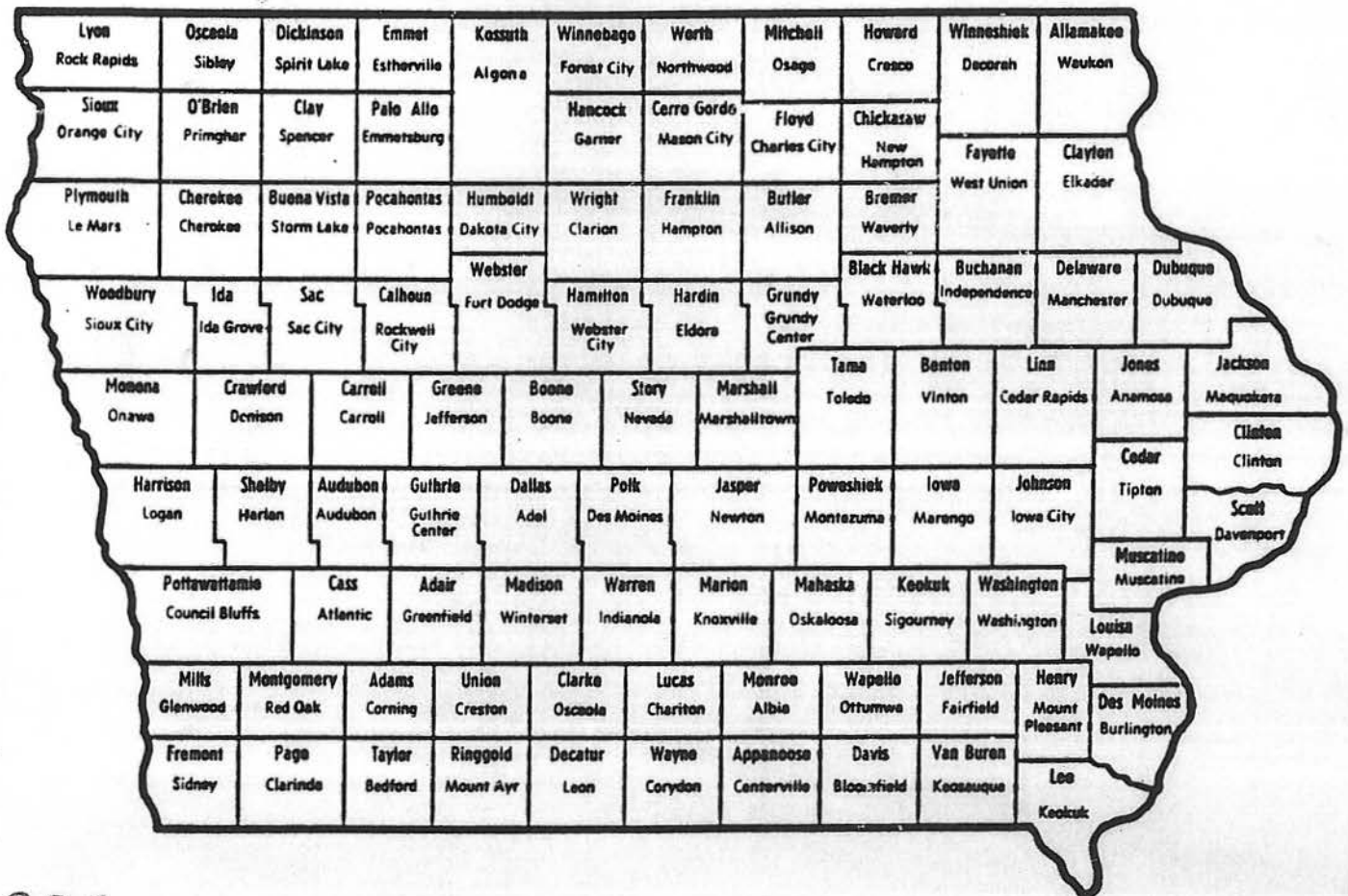
Vol. XII

Grave Marker Inscriptions

Nevada Township, Inc. Nevada Municipal Cemetery

Story County, Iowa

Pages 793-928



1621

Nevada Municipal Cemetery -- Block 2

9. J Frederick REED Oct 17 1863 - Jan 19 1939
10. Emily J REED Aug 13 1865 - Jan 31 1932
11. Infant son of J F & Emily REED died Sep 22 1893
12. C D BARTHLOW 1874-1923
13. Ida E BARTHALOW 1874-1930
14. John F IKEHORN Dec 22 1847 - Mar 17 1895
Ira infant son of J F & H A IKEHORN died May 4 1892
15. Father (IKEHORN)
16. DOOLEY L B Oct 8 1916; Helen M May 4 1916
17. HANSEN Hans 1853-1937; Helen 1863-1942
18. Hanne dau of N H & A HANSEN Mar 4 1848 - Dec 9 1927
19. Mother (HANSEN)
20. Niels HANSEN 1817-1894; Amelia C HANSEN
Nov 26 1821 - Apr 3 1904
21. Father (HANSEN)
22. Nels son of M W HANSEN Dec 18 1886 - Aug 19 1910
23. Father M W HANSEN Dec 15 1850 - Nov 9 1915
24. Elizabeth M HANSEN 1859-1932
25. Howard (HANDSAKER)
26. Howard HANDSAKER beloved son of D P & F D HANDSAKER
Feb 24 1889-Dec 24 1902
David P HANDSAKER Dec 18 1865 - Aug 21 1894
27. HANDSAKER
28. HANDSAKER
29. Wollie PICKETT Mar 31 1862 - Mar 5 1895
30. Moses PICKETT Sep 4 1832 - Mar 10 1911
31. Mary E PICKETT Feb 14 1844 - Apr 22 1917
32. Luella S PICKETT Sep 13 1859 - May 9 1938
33. Isabel T wife of W R KIRK 1846-1904
34. W R KIRK Dec 22 1840 - Dec 4 1916 (CW)
35. Darling Hazel dau of W & I M ALMY Jul 3 1894 - Dec 27 1894
36. (small stone, no inscription)
37. Mary wife of D NELSON died Aug 13 1894 age 31y 5m 7d

Row 4

1. Mary A TYSON Jan 8 1858 - Feb 12 1905
2. ALFRED Mabel l Mar 28 1914 - ; Joseph A Jan 27 1914-
parents of Mary Jo; grandparents of Jodi Lynn
3. HANSEN Montague J 1880-1962; Sophie C 1879-1960
4. HANSEN George W Jan 8 1909 - Dec 11 1985
J Irene Oct 9 1909- ;parents of Bill & Linda
5. Ena REBMAN 1869-1970
6. REBMAN Harry E 1863-1937; Ena W 1869-19-
Leota F 1897-1944
7. Leota REBMAN
8. John R JACKSON 1868-1953 (IOOF)
9. WHITE Mary Myrtle 1880-1975; Samuel M 1866-1946
10. Rose ROBINSON Jan 23 1879 - Jun 2 1916
11. Opal ROBINSON May 8 1903 - Jun 2 1916
12. Frankie CARR Oct 12 1891 - Jul 27 1897