

Standard Form For Members of the Legislature

Name of Representative Hanna, George H. Senator _____

Represented Cassworth County, Iowa

1. Birthday and place 3 June 1850 Waterloo Township, Black Hawk County, Iowa

2. Marriage (s) date place

Ophelia M. McIntosh 1876

3. Significant events for example:

A. Business His bank, a private institution, prospered and was known as one of the substantial financial institutions in northwest Iowa

B. Civic responsibilities _____

C. Profession Banker

4. Church membership Methodist Episcopal

5. Sessions served 30th, 31st General Assemblies 1904, 1906

6. Public Offices

A. Local First postmaster of Lu Verne, Iowa; first mayor of Lu Verne

B. State _____

C. National In 1889 he was a delegate to the Republican National Convention which nominated Harrison

7. Death 16 Jan 1918 Lu Verne, Iowa; buried Lu Verne Cemetery Lu Verne, Iowa

8. Children Eugenia (Mrs. T. A. Robertson); Kenfield; Genevieve (Mrs. Swisher); Consuelo

9. Names of parents George H. and Mary (Melrose) Hanna

10. Education His early education was received in the
public schools of Waterloo; he later attended
the public schools of Goldfield, Iowa

11. Degrees Graduate of Upper Iowa University, Fayette, Iowa
MA degrees

12. Other applicable information Republican

- During the Civil War he was associated with his father
and uncle in furnishing beef to war prisoners at Rock
Hill, Illinois
- He taught several terms
- He later was engaged in the mercantile business at
Goldfield.
- He founded the town of Lu Verne in 1880
- By careful investing he became one of the wealthiest in the county.
- He owned 6,115 acres of land in Kosciusko and Humboldt counties
as well as valuable interests in Mexico

INDIES

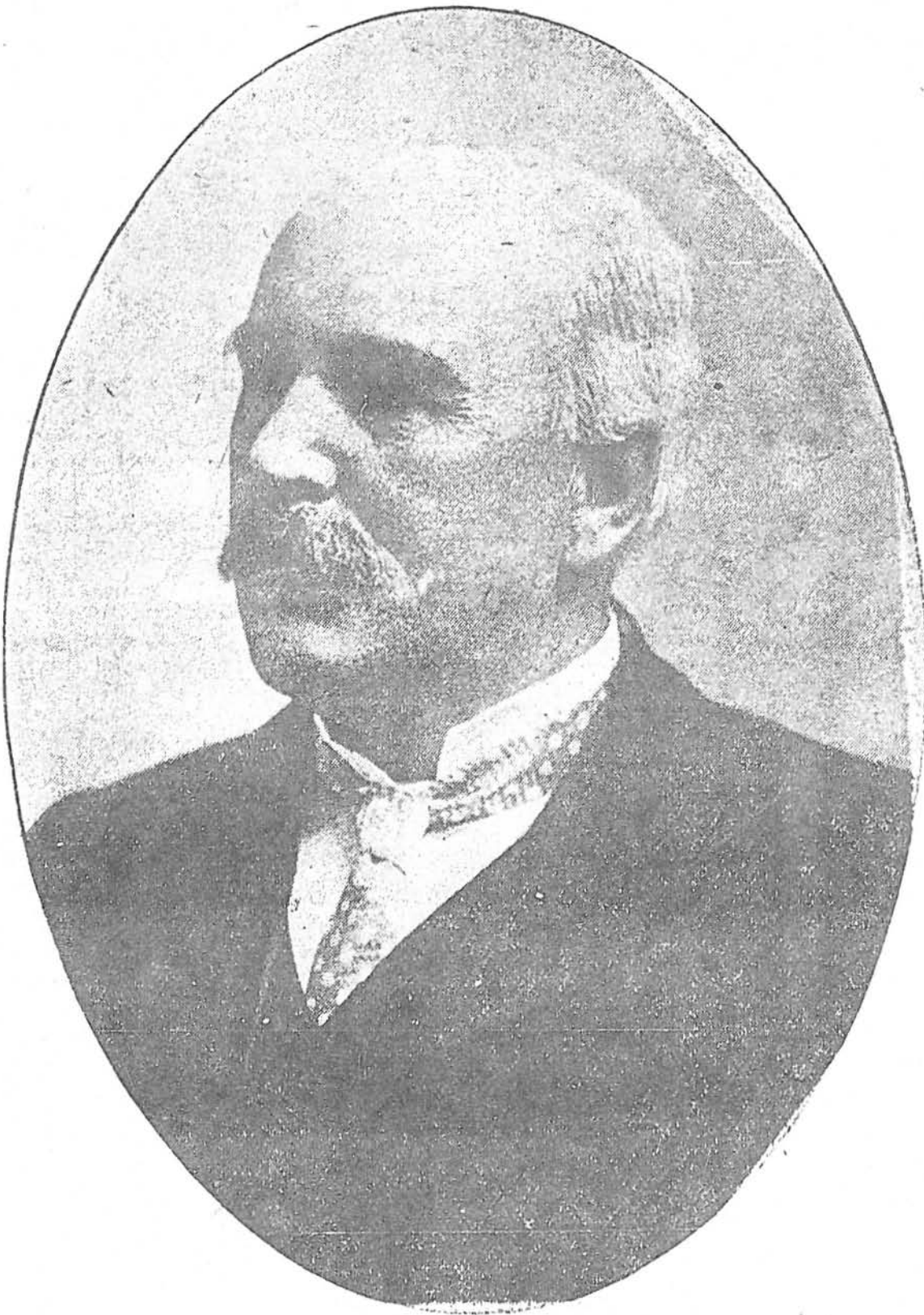
Prominent Kossuth County Man, Who Is Dead

DR. C

Hanna of Away

nd One of
hern Iowa.
of Land.

of the lead-
ns of north-
ome in Lu-
esday after-
ending over
ounded the
and by care-
e one of the
oun^t His
n, pros-
one of the
titutions of
Mr. Hanna
e part in the
upon two oc-
esentative of
legislature.
te to the re-
tion which
resident, and
tial electors
was a great
cious invest-
vned in Kos-
nties, 6115
land, besides
exico. The
n Lu Verne
t hundreds of
es and hogs.
by many at
rnest repub-
's first post-
naylor of the
rchased lands
and they are



Geo. W. Hanna, Pioneer Lu Verne Banker and Politician,
Who Died Last Wednesday.

Most
struct

Opera Ho
Sunday

Last we
advertiser
riotic me
house, a
speaker.
Governor
and the ce
Dr. Char
Cornell C
being put
and they

L. J. Di
ing last
the gosp
veterans.
The Alg
furnished
in his in
the objec
they wer
the speal
a splend
flow of
audience
hours.
present
existed
"Right
America
Prussian
one or th
America
gardless
the Amer
dollar.

We an
ideals, t
mocracy
war for
we were
history.

born at Wat-
, his parents
Hawk county
journey with
his early ad-
that city, lat-
hood of Gold-

Source: Iowa Territorial and State Legislators Collection compiled by volunteers and staff at the State Historical Society of Iowa Library, Des Moines, Iowa.

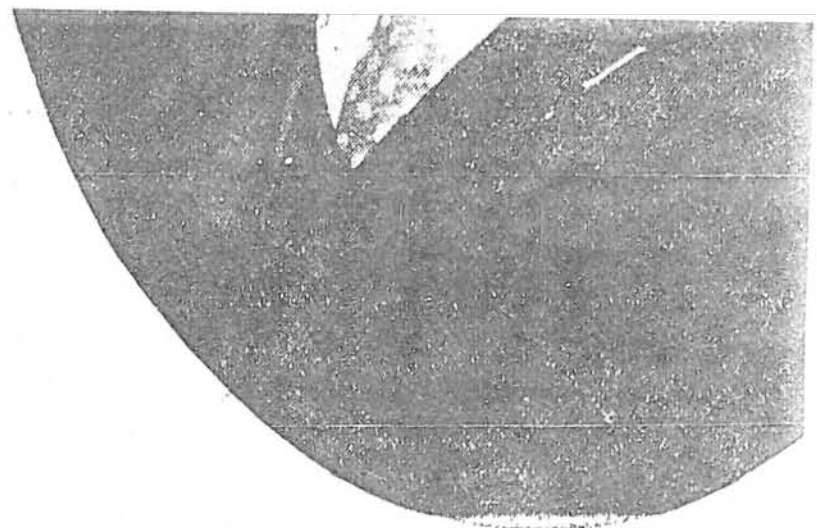
nominated Harrison for president, and was one of the presidential electors for ex-President Taft. He was a great promoter, and his judicious investments flourished. He owned in Kosuth and Humboldt counties, 6115 acres of fertile prairie land, besides valuable interests in Mexico. The Hanna ranch, located in Lu Verne township, is stocked with hundreds of head of fine cattle, horses and hogs. His wealth is estimated by many at a million. He was an earnest republican and was Lu Verne's first postmaster and also first mayor of the town he founded. He purchased lands when they were cheap, and they are now valuable.

George W. Hanna was born at Waterloo, Iowa, June 3, 1850, his parents having moved to Black Hawk county from Illinois, making the journey with an ox team. He received his early education in the schools of that city, later attending the public school at Goldfield, Iowa. He attended the Upper Iowa University at Fayette and received the M. A. degree. During the Civil War he was associated with his father and uncle, Philip Hanna, in furnishing beef to the war prisoners at Rock Island. He also taught a number of terms of school and was for a time engaged in the mercantile business at Goldfield before locating at Lu Verne.

In 1876 he was united in marriage to Miss Ophelia McIntosh, a native of Wright county. Four children were born to this union, Eugenia, wife of T. A. Robertson, now living in the south; W. Scott, now practicing law at Lu Verne; Geneva, wife of Attorney Swicher of Iowa City; and Consuelo, who is attending the University at Iowa City. Funeral services were held at the home Saturday, and many friends of the deceased were present to pay their last respects to one of the pioneers who assisted in bringing this country from a wilderness to its present prosperous condition. Judge Hanna, an elder brother, passed away at his home in Texas about one week ago, and Consul Phil Hanna, of Monterey, Mexico, was unable to be present at the funeral of his brother on account of illness.

OLD SETTLER DEAD.

John Yeager, Resident of County Since 1881, Died at Bancroft Last



Geo. W. Hanna, Pioneer Lu Verne Banker
Who Died Last Wednesday

CAMP CODY NEWS.

Harvey Jennings, Algona
Soldier Boy, Writes
Home.

Tells of Great Sand Storm.—Soldiers
Wear Goggles and Handkerchief
Over Face For Protection.

Harvey Jennings, son of Mr. and Mrs. T. E. Jennings, living east of Algona, has written a letter from Camp Cody, New Mexico, telling of some of his experiences in the army, a part of which we are allowed to print below. Young Jennings, eager to defend his country, enlisted in the army early last summer before the draft, and for a time was stationed at Ft. Dodge. He went to Camp Cody early in the fall. Portions of the letter follow:

"Camp Cody, January 8, 1918—
Dear Mother: I sure like to receive letters, but there is none I look for like the one from home.

"I am on kitchen police today. We get four days at a time of kitchen work. It isn't quite as hard as drilling and we get all we want to eat. They are putting a cement floor in the kitchen tonight. At night is the only time they have to do such work, as there is no room in the day time.

DIED AT

Mrs. Charles K.
Bessie Quick,
Died Here Saturday

Mrs. Charles home in Clear Lake after a long illness in Algona as she had been born and raised here. She was a general helper and a woman of a sunny disposition. Her many friends in Algona September 25, 1895, she was born. Her father was born in Humboldt, and she resides at Seaside. Her funeral services were held at Clear Lake Saturday afternoon by the side of her home. A large number of old friends

DEDICATION

Immense Crowd at Meeting Saturday—Governor

An immense crowd gathered for the dedication exercises Saturday, when the new consolidated township was dedicated to the township. Governor was to speak, but on account of

unicat- speech as the best they had ever heard
board. and others ranked him with Gunsaulus,
on was Bryan and other noted orators.

LUVERNE BANKER DIES.

Geo. W. Hanna, Prominent Banker and
Real Estate Owner Passes Away.

Special from Lu Verne: George W. Hanna, a highly respected citizen and a member of one of Iowa's pioneer families, passed away at his home in Lu Verne, Iowa, at 5:00 p. m. Wednesday, January 16, 1918. He was born June 3, 1850 in Black Hawk county, Iowa, being the third son of George W. and Mary Melrose Hanna.

Although he had attained great honor as a citizen and had accumulated much of this world's goods he took greater pride in humble birth than anything else; and this is best expressed in his own words: "I was born June 3d, 1850 in a log cabin built by my father in Waterloo township. This log cabin was the first in the township and served for many years as a church, courthouse and free hotel. I was rocked in a cradle dug out of a basswod log. It was great to be able to boast of a cradle in that day and age."

He attended the village school and Prairie Home Seminary and later, Upper Iowa University at Fayette. After completing his education he taught school for a term in the Jockeytown district, south of Waterloo, and then moved to Goldfield, Wright county. He was in business in Goldfield for several years and in 1880 moved northwest and founded the town of Lu Verne and made it his home until the time of his death. His successes in life were due to the fact that he was a constructive and indefatigable worker.

Mr. Hanna represented Kossuth in the 30th, and 31st general assemblies, and even further honors might have been his, had he chosen to accept them.

Mr. Hanna's land interests were large

due to the fact that he was a constructive and indefatigable worker.

Mr. Hanna represented Kossuth in the 30th, and 31st general assemblies, and even further honors might have been his, had he chosen to accept them.

Mr. Hanna's land interests were large besides being owner of the private Bank of Lu Verne.

Mr. Hanna was married to Ophelia M. McIntosh, of Goldfield, Iowa. Sept. 27th., 1876. He is survived by the wife, and four children: Mrs. Eugene Edith Hanna Robertson, of Monterey, Mexico; Winfield Scott Hanna, of Lu Verne, Iowa; Mrs. Geneva Anna Hanna Swisher, of Iowa City; and Miss Consuelo Hanna, who is a student in the Iowa State University. Also one brother, Philip C. Hanna, consul general for the northern district of Mexico; and three sisters: Mrs. Emily George and Mrs. Edith Colton of Waterloo, and Mrs. Mollie Tiller of Cedar Falls. Also two grand children: Georgia Robertson and Treadwell Ayers Robertson Jr.

An older brother, Judge Johnson Hanna, died last Sunday at his home in Blackwell, Texas.

Mr. Hanna had a wide acquaintance throughout the state and aside from the immediate relatives, he leaves a wide circle of friends who mourn his decease.

Funeral services were conducted at the home at Lu Verne, Saturday at 2:30 p. m. by Dr. F. W. Court., pastor of First M. E. church, Waterloo, Iowa, assisted by Rev. J. H. Edge, pastor of the M. E. church, Lu Verne. Mr. Paul Davis of Waterloo, an old friend of the family, very beautifully rendered the old hymns; "The Home of the Soul," "Lead Kindly Light," and "In the Sweet Bye and Bye." Interment was made in the Lu Verne cemetery.