

Standard Form For Members of the Legislature

Name of Representative Swanson, Gustav E. Senator \_\_\_\_\_

Represented Mitchell County, Iowa

1. Birthday and place 20 Feb 1872 Patton, Ford County, Illinois

2. Marriage (s) date place

① Belle

② Jessie M. Carter 7 Jan 1925 Charles City, Iowa

3. Significant events for example:

A. Business He was on the original War Relieving Board in Holt, Mo. and on the selectees service board 10 months

B. Civic responsibilities Mason; Osage Chamber of Commerce;

C. Profession Cigar store owner in Osage for 40 years

4. Church membership Congregational

5. Sessions served 41<sup>st</sup> General Assembly 1925

6. Public Offices

A. Local Mayor of Osage for several terms; Osage city councilman 4 years

B. State \_\_\_\_\_

C. National \_\_\_\_\_

7. Death 7 Oct 1967, St. Ansgar, Iowa; buried Osage Cemetery, Osage, Iowa

8. Children No children

9. Names of parents John L. and Matilda (Thalstrum) Swanson

Gus Hanson

10. Education

11. Degrees

12. Other applicable information

Republican

- He came to Osage, Iowa in 1900 going into business in the Editar Cigar Store. He learned cigar making in Illinois.
- He retired in 1940. He then served on the Mitchell County draft board and on the war rationing board in World War II.
- He first settled at Clear Lake, Iowa from Illinois in 1896 before moving to Osage in 1900.



# Record First Quarter

## Osage Meets Forest City In Homecoming

Coach Warren Dobry's Osage community high school Green Devils, who will be seeking their third North Iowa conference win in four games when they meet the Forest City Indians here Friday night, will have an added incentive. It will be Osage's annual Homecoming.

Osage is 7-5-2 in the series with Forest City. The schools are 4-4 in games since Osage joined the conference in 1959. Forest City won 33-13 last year.

### Forest City Indians

The Indians have a 1-2 record in the conference this year and a 1-3 mark in all games. The Forest City record:

Clear Lake 27, Forest City 7.  
Buffalo Center 27, Forest City 7.

Forest City 13, Britt 7.

Belmond 37, Forest City 7.

### Green Devils

The Green Devils are tied for second place in the conference standings with Lake Mills and Garner, each having a 2-1 record. Osage has a 3-1 mark in all games.

The Green Devils defeated Greene 18-0, Northwood 7-0 and Garner 19-7, and were defeated by Lake Mills 13-6.

However, the Green Devils will not be taking the Indians lightly in this Homecoming battle, as they haven't forgotten that last year the Indians had dropped three straight 1-0-0 p games before trimming Osage 33-13, and that the Indians' outstanding passer, Dan Schmidt, quarterback, is back for his final year.

## Funeral Thursday For Gus Swanson, 95, Former Mayor

Funeral services will be held this afternoon at 2 o'clock for a former Osage mayor, Gus Swanson, 95, who died Monday at the Good Samaritan Nursing Center in St. Ansgar.

The Rev. Wesley Anderson, pastor of the Baptist church in Osage, will be in charge of the services at the Champion Funeral Home. The Masonic Order will conduct the rite at the graveside at the Osage cemetery.

Gus Swanson served as mayor of Osage several terms, and also sat in the state legislature one term. He was owner and operator of the Editor Cigar store in Osage for 40 years, and during this time he helped found and became a charter member of the Osage Chamber of Commerce. He was a member of the Masonic Lodge AF and AM for 76 years, served on various committees of the Chamber of Commerce, and was an active member of the Congregational church.

Following his retirement in 1940 Mr. Swanson served on the Mitchell county draft board and on the war rationing board in World War II.

Gustav E. Swanson was born in Paxton, Ill., Feb. 20, 1872. He came to Osage in 1900 and almost immediately went into business in the Editor Cigar Store.

Mr. Swanson and Jessie M. Carter were married in Charles City and established their home in Osage.

Survivors include his widow, Jessie, also a resident at the Good Samaritan Nursing Center in St. Ansgar, and many nieces and nephews.

## Two Contests In City Election Here Nov. 7

Two contests developed for the city election Nov. 7 with the filing of nomination papers by the deadline Tuesday evening.

There will be a three-way race for councilman-at-large, with two to be elected. The candidates are Marloe Ellingson, incumbent, Robert E. Erdmann and Roland Philipp.

The other contest will be for councilman from the first ward Arthur Kark, incumbent, will be opposed by Robert Richsmann.

Elgin G. Enabnit, former mayor, is a candidate to succeed James E. Millard, present mayor who is not a candidate for re-election.

Mr. Enabnit served as mayor from 1955 to 1959 and 1961 to 1965, inclusive.

Alvin Warrington, incumbent councilman-at-large, is a candidate for councilman from the fourth ward to succeed Robert Coonradt, incumbent, who is not a candidate for reelection.

Other candidates who filed for the Nov. 7th election are: Lewis Lauterbach, second ward councilman; R. J. Pritchard, third ward councilman, and William H. Cook, park commissioner. All are seeking re-election unopposed.

## Adult Education Classes Planned At High School

Plans are under way for a night school class in

Ne  
Fo  
At

Pl  
17th  
wee  
aga  
A  
den  
the  
Osa  
in s  
rou  
H  
stuc  
are  
Wes  
You  
Si  
of 5  
cou  
ove  
bee  
ing

Jir  
Est  
Tra

Ji  
Mr.  
rur  
cap  
day  
he  
him  
T  
cab  
Kilt  
soul  
Lyb  
Ti  
caus  
sprin  
of th  
the  
wen  
ing.

gate



You searched for **Gustav E. Swanson** in **Iowa**

### Iowa State Census Collection, 1836-1925

Name:	<b>Gustav E Swanson</b>										
Birth Year:	<b>abt 1873</b>										
Birth Place:	<b>Illinois</b>										
Gender:	<b>Male</b>										
Race:	<b>White</b>										
Marital Status:	<b>Married</b>										
Census Date:	<b>1 Jan 1925</b>										
Residence State:	<b>Iowa</b>										
Residence County:	<b>Mitchell</b>										
Locality:	<b>Osage</b>										
Relation to Head:	<b>Head</b>										
Mother:	<b>Matilden Walstrum</b>										
Mother's Birthplace:	<b>Sweden</b>										
Father:	<b>John L Swanson</b>										
Father's Birth Year:	<b>abt 1879</b>										
Father's Birthplace:	<b>Sweden</b>										
Marriage Place:	<b>Sweden</b>										
Spouse Name:	<b>Jesse Swanson</b>										
Roll:	<b>IA1925_1849</b>										
Line:	<b>1</b>										
Neighbors:	<a href="#">View others on page</a>										
Household Members:	<table border="1"> <thead> <tr><th>Name</th><th>Age</th></tr> </thead> <tbody> <tr><td><b>Gustav E Swanson</b></td><td><b>52</b></td></tr> <tr><td><b>Jesse Swanson</b></td><td><b>45</b></td></tr> <tr><td><b>Esthe Platt</b></td><td><b>9</b></td></tr> <tr><td><b>Ella Wilden</b></td><td><b>76</b></td></tr> </tbody> </table>	Name	Age	<b>Gustav E Swanson</b>	<b>52</b>	<b>Jesse Swanson</b>	<b>45</b>	<b>Esthe Platt</b>	<b>9</b>	<b>Ella Wilden</b>	<b>76</b>
Name	Age										
<b>Gustav E Swanson</b>	<b>52</b>										
<b>Jesse Swanson</b>	<b>45</b>										
<b>Esthe Platt</b>	<b>9</b>										
<b>Ella Wilden</b>	<b>76</b>										
<b>Source Information:</b>	<p>Ancestry.com. <i>Iowa State Census Collection, 1836-1925</i> [database on-line]. Provo, UT, USA: Ancestry.com Operations Inc, 2007.  Original data: Microfilm of Iowa State Censuses, 1856, 1885, 1895, 1905, 1915, 1925 as well various special censuses from 1836-1897 obtained from the State Historical Society of Iowa via Heritage Quest.</p>										
<b>Description:</b>	<p>This database contains Iowa state censuses for the following years: 1856, 1885, 1895, 1905, 1915, and 1925. It also includes some head of household censuses and other special censuses from 1836-1897. Information available for an individual will vary according to the census year and the information requested on the census form. Some of the information contained in this database though includes: name, age, gender, race, birthplace, marital status, and place of enumeration.  <a href="#">Learn more...</a></p>										

Contact Us: 1-800-ANCESTRY   Ancestry.com Blog   Affiliates   Advertising


© 1997-2010 Ancestry.com   Corporate Information   PRIVACY POLICY   Terms and Conditions

Ancestry.com



You searched for **Gustave Swanson** in **Iowa**

### 1930 United States Federal Census

Name:	<b>Gustave E Swanson</b>	
Home in 1930:	<b>Osage, Mitchell, Iowa</b>	
	<a href="#">View Map</a>	
Age:	<b>58</b>	
Estimated birth year:	<b>abt 1872</b>	
Birthplace:	<b>Illinois</b>	
Relation to Head of House:	<b>Head</b>	
Spouse's name:	<b>Jessie M</b>	
Race:	<b>White</b>	
Occupation:		
Education:		
Military service:	<a href="#">View image</a>	
Rent/home value:		
Age at first marriage:		
Parents' birthplace:		
Neighbors:	<a href="#">View others on page</a>	
Household Members:	Name	Age
	<b>Gustave E Swanson</b>	<b>58</b>
	<b>Jessie M Swanson</b>	<b>52</b>
	<b>Esther Platt</b>	<b>14</b>
<p><b>Source Citation:</b> Year: 1930; Census Place: <i>Osage, Mitchell, Iowa</i>; Roll 669; Page: 7B; Enumeration District: 13; Image: 603.0.</p> <p><b>Source Information:</b>   Ancestry.com. 1930 United States Federal Census [database on-line]. Provo, UT, USA: Ancestry.com Operations Inc, 2002.</p> <p>Original data: United States of America, Bureau of the Census. <i>Fifteenth Census of the United States, 1930</i>. Washington, D.C.: National Archives and Records Administration, 1930. T626, 2,667 rolls.</p> <p><b>Description:</b>            Containing records for approximately 123 million Americans, the 1930 United States Federal Census is the largest census released to date and is the most recent census available for public access. The census gives us a glimpse into the lives of Americans in 1930, and contains information about a household's family members and occupants including: birthplaces, occupations, immigration, citizenship, and military service. The names of those listed in the census are linked to actual images of the 1930 Census. <a href="#">Learn more...</a></p>		

Contact Us: [1-800-ANCESTRY](#) [Ancestry.com Blog](#) [Affiliates](#) [Advertising](#)

© 1997-2010 Ancestry.com [Corporate Information](#) [PRIVACY POLICY](#) [Terms and Conditions](#)

Ancestry.com

# Individual Record

FamilySearch™ U.S. Social Security Death Index

## Search Results

Select record to download - Maximum: 50

---

 **Gustave SWANSON**

**Birth Date:** 20 Feb 1872  
**Death Date:** Oct 1967  
**Social Security Number:** 478-56-0930  
**State or Territory Where Number Was Issued:** Iowa

**Death Residence Localities**

**ZIP Code:** 50472  
**Localities:** Meltonville, Mitchell, Iowa  
Otranto, Mitchell, Iowa  
Saint Ansgar, Mitchell, Iowa

---

[Return to search results](#)[Prepare selected records for download](#)

---

This data is only accurate as of 1 Aug 2010.

The information on this printout is from the United States government records and is in the public domain. No claim to copyright is expressed or implied.

An official Web site of The Church of Jesus Christ of Latter-day Saints  
© 2008 Intellectual Reserve, Inc. All rights reserved.  
Conditions of Use Privacy Policy

[About Us](#) | [Contact Us](#) | [Press Room](#) | [Site Map](#)  
[Records Custodians](#) | [Developer Network](#) | [LDS Church Sites](#) |  
[LDS Country Sites](#)

**FIND A GRAVE**



**Actions**

- [Begin New Search](#)
- [Refine Last Search](#)
- [Cemetery Lookup](#)
- [Add Burial Records](#)
- [Help with Find A Grave](#)

**Find all Swansons in:**

- [Osage Cemetery](#)
- [Osage](#)
- [Mitchell County](#)
- [Iowa](#)
- [Find A Grave](#)

**Top Contributors**

[Success Stories](#)

[Discussion Forums](#)

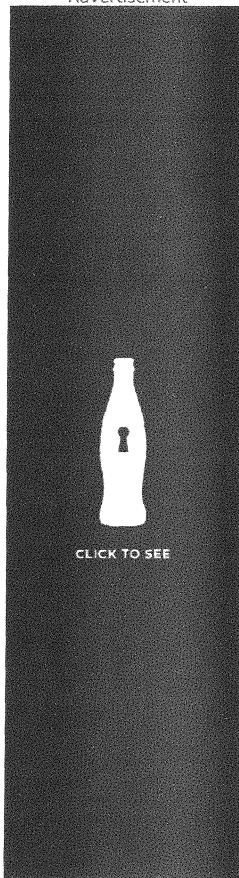
[Find A Grave Store](#)

[Support Find A Grave](#)

[Log In](#)



Advertisement



[Obituaries](#) [Genealogy](#) [Find an Old Obituary](#) [Find Unknown Ancestors](#) [www.myheritage.com](http://www.myheritage.com)

[Iowa Memorial Granite Headstones & monuments. Affordable prices. Iowa's best since 1943.](#) [www.iowamemorialgranite.com](http://www.iowamemorialgranite.com)

Ads by Google

## Gustave E Swanson

[Memorial](#)   [Photos](#)   [Flowers](#)

[Edit](#)

[Learn about upgrading this memorial...](#)

**Birth:** Feb. 20, 1872  
 Paxton  
 Ford County  
 Illinois, USA

**Death:** Oct. 9, 1967  
 Saint Ansgar  
 Mitchell County  
 Iowa, USA



**Gustave Swanson**

Added by: [DM Scott](#)

**#1:**  
 The name of Gus Swanson was well-known a decade ago. He had many memories of Osage through he was not born here, and likewise, Osage has many memories of the late Mr. Swanson and his late wife, the former Jessie Carter.

Mrs. Swanson's niece, Mrs. Arnold Dieterich, the former Janette Coonradt, now living south of St. Ansgar, also has memories of her life at the home of her uncle and aunt, the Swansons.

Gus was born in Paxton, Illinois on February 20, 1872 and lived to be 94, passing away, October 9, 1967. The dates aren't as important as what transpired in the interim.

He was the second oldest in a family of six children, and their father died and Gus had to go to work after the fourth grade. He not only helped support his mother, but his brothers and sisters as well - and not just until the children were grown, but as long as Gus lived.

He learned the cigar-making trade as a very young man, and came west to Clear Lake and worked there at his trade for a time. He was located there during the Spanish American War. Later he moved to Austin and often told Janette of remembering the Hormel meat wagon as it traveled from town to town. He remained there only a short time, then in search of a cigar store to buy he found his place in Osage at the Editor Cigar Store in 2900. His first wife, Belle, died here in 1916, and is buried in the Osage Cemetery. He and Jessie Carter were married January 7, 1925.

Janette recalls that Fred Moss was a partner of Mr. Swanson in the cigar store and that Gus retired from the store in 1940.

He did his civic chores well, He served as Osage mayor longer than any person up to that time. His first hitch was two years before he was elected to serve as state legislator in Des Moines for one term. He then returned to Osage and resumed the office of mayor 12 more years, was on the original War Rationing Board in World War II, and was on the selective service board 10 more years.

He was an active member of the Osage Chamber of Commerce for many years, and



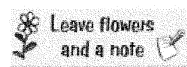
**Cemetery Photo**

Added by: [Betsy Monson](#)

[Add a photo](#)  
for this person

[Request](#)  
A Photo

Photos may be scaled.  
 Click on image for full size.





after his retirement, continued to pay his dues to retain his membership.

Gus was also an established member of the Osage Masonic Lodge and had served as it's worshipful master.

Jessie Swanson was a busy person also, all through her younger years. She served as Osage's third switchboard operator, long before there was a Northwestern Bell connection to Osage. It was known as the Eureka Telephone Company and she was "hello girl" for about 20 years.

Having no children of their own, they reared a relative, Esther, and another niece, Janette Coonradt Dieterich, was like their own,

They gave her many happy memories that she is carrying into another generation.

[Mitchell County Press, Quasquicentennial Edition, July 1, 1981]

NOTE: The age, birthdate and death dates do not add up, but that is what the newspaper had.

#2:

The Osage Cemetery listing on IaGenWeb shows:

SWANSON, GUSTAVE E. (bur. loc.) 1401 10  
(death/burial) 09 OCT 1967.

-----  
----

The photo is from the above Mitchell County Press article.

**Family links:**

**Spouses:**

Jessie *Carter* Swanson (1877 - 1968)  
Belle Swanson (1886 - 1918)

**Burial:**

Osage Cemetery  
Osage  
Mitchell County  
Iowa, USA

Created by: DM Scott  
Record added: Jul 24, 2010  
Find A Grave Memorial# 55394661

[Accuracy and Copyright Disclaimer](#)

FIND A GRAVE



Actions

- [Begin New Search](#)
- [Refine Last Search](#)
- [Cemetery Lookup](#)
- [Add Burial Records](#)
- [Help with Find A Grave](#)

Find all **Swansons** in:

- [Osage Cemetery](#)
- [Osage](#)
- [Mitchell County](#)
- [Iowa](#)
- [Find A Grave](#)

[Top Contributors](#)

[Success Stories](#)

[Discussion Forums](#)

[Find A Grave Store](#)

[Support Find A Grave](#)

[Log In](#)



Advertisement

Featured See more!  
**Jobs**  
 powered by **monster**

► [AT&T Retail S...](#)  
 Description Don't miss this opportunity to join the company re...  
**AT&T**  
**ANKENY, IA**

► [Automotive Ou...](#)  
 AUTOMOTIVE OUTSIDE SALES OPPORTUNITY!  
 We are seeking an outsid...

**Des Moines, IA**

► [Insurance Sal...](#)  
 Description:  
 Performance Matters Associates (PMA) is a nationa...  
**PMA (Conseco)**  
**Des Moines, IA**

► [Branch Accoun...](#)  
 Citi, the leading global financial services company, has some ...  
**Citi**  
**Clive, IA**

Are you an Employer?  
 Put your job here!  
 **Get started!**

**Find the school you attended in Des Moines, IA**

Members: 8189

Des Moines Technical High School

classmates.com

Enter another zipcode: 50310

# Belle Swanson

Memorial    Photos    Flowers    [Edit](#)

[Learn about sponsoring this memorial...](#)

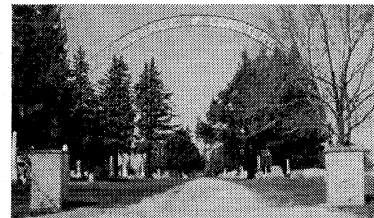
Birth: 1886  
 Death: 1918

Family links:  
 Spouse:  
 Gustave E Swanson (1872 - 1967)\*

\*[Point here for explanation](#)

Burial:  
[Osage Cemetery](#)  
 Osage  
 Mitchell County  
 Iowa, USA

Created by: [Dennis Warden](#)  
 Record added: Jul 31, 2002  
 Find A Grave Memorial# 6650678



Cemetery Photo  
 Added by: [Betsy Hanson](#)

Add a photo for this person Request A Photo

Photos may be scaled.  
 Click on image for full size.



- [CJS](#)  
 Added: Jun. 24, 2010

Leave flowers and a note

[Accuracy and Copyright Disclaimer](#)

**FIND A GRAVE**



**Actions**

- [Begin New Search](#)
- [Refine Last Search](#)
- [Cemetery Lookup](#)
- [Add Burial Records](#)
- [Help with Find A Grave](#)

Find all **Swansons** in:

- [Osage Cemetery](#)
- [Osage](#)
- [Mitchell County](#)
- [Iowa](#)
- [Find A Grave](#)

[Top Contributors](#)

[Success Stories](#)

[Discussion Forums](#)

[Find A Grave Store](#)

[Support Find A Grave](#)

[Log In](#)



Advertisement



## Jessie Carter Swanson

[Memorial](#)    [Photos](#)    [Flowers](#)    [Edit](#)

[Learn about sponsoring this memorial...](#)

**Birth:** Jan. 12, 1877  
 Osage  
 Mitchell County  
 Iowa, USA  
**Death:** Oct., 1968  
 Osage  
 Mitchell County  
 Iowa, USA



Cemetery Photo  
 Added by: [Betsy Monson](#)

**Family links:**  
**Parents:**  
[John Carter \(1848 - \\_\\_\\_\\_\)](#)  
[Nettie Laura Lower McKanna \(1856 - 1921\)](#)

**Spouse:**  
[Gustave E Swanson \(1872 - 1967\)\\*](#)

[\\*Point here for explanation](#)

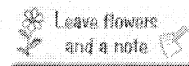
**Burial:**  
[Osage Cemetery](#)  
 Osage  
 Mitchell County  
 Iowa, USA

Created by: [DM Scott](#)  
 Record added: Jul 24, 2010  
 Find A Grave Memorial# 55394596

[Add a photo  
for this person](#)

[Request  
A Photo](#)

Photos may be scaled.  
 Click on image for full size.



[Accuracy and Copyright Disclaimer](#)