

Standard Form For Members of the Legislature

Name of Representative Senator Topping
Clyde Hamilton - Represented New Madison County, Iowa

1. Birthday and place 8 Jan 1884 Wes County, Kansas near
Wheat, Kansas

2. Marriage (s) date place
Helena Helen Young 21 May 1908 Burlington, Iowa

3. Significant events for example:
A. Business Colonization agent for the Canadian Pacific Railway; operator
of the J. H. Topping Real Estate and Insurance Company
B. Civic responsibilities Rotary; Elks
C. Profession Real estate, ranches in Canada; employee of the Canadian Pacific
Railway

4. Church membership Congregational

5. Sessions served 42nd, 43rd, 44th, 45th General Assemblies 1927, 1929,
1931, 1933

6. Public Offices
A. Local _____
B. State He was associated with the Home Owners Loan. Later he was
associated with the Iowa State Fed. Commission
C. National _____

7. Death 31 Oct 1962 Burlington, Iowa; buried Aspen Grove Cemetery, Burlington,
Iowa

8. Children Clyde Hamilton, Jr.; Eugenia (Mrs. Berkeley Mandtosh);
Alice (predeceased her father in death)

9. Names of parents John H. and Ida (Johnston) Topping

Topping, Clyde Hamilton

10. Education He was educated in the public schools in Burlington, Iowa

11. Degrees University of Iowa, Iowa City, Iowa Session 1906.

12. Other applicable information Republican

- As a young man he farmed in Lockport, Canada.
- Later he became a colonization agent for the Canadian Pacific Railway
- In 1888 the family moved to Iowa and to Burlington, Iowa in 1896.
- After he left the Canadian Pacific Railway he engaged in the real estate business at Burlington, Iowa.

Good Start, Weak Finish

(AP)—Trade in the hog market turned steady to weak Wednesday with a fairly active start at a steady to strong. Some were 25 cents lower at the relatively few head of 210 lb. No. 1 grade sold at the lighter steers sold 50 to 75 lower with prime grade going \$32-33.25.

(AP)—(USDA)—Hog butchers steady to 25 lower; 220 lb. butchers 17.25-17.75; 1-3 190-230 lbs. 16.65-17.50; 2-4 270 lbs. 16.50-17.00; 2-4 260-4 16.00-16.50; mixed 1-3 3.00-4.25-15.00; 500-600 lbs. 13.75-

12.00; calves none; slaughterers 50 to 75 lower; load 1,200 lbs. slaughter steers other load lots prime 1,200-1,320.00-33.00; bulk high choice prime 1,150-1,350 lbs. 31.00-32.00; choice 1,100-1,350 lbs. 29.25-30.00; good 25.50-28.00; few loads high choice 950-1,025 lb. beef 27.50-30.00; choice 850-1,000 lbs. 27.50-30.00; utility and special cows 14.00-16.50; utility commercial bulls 18.00-20.50; good vealers 25.00-28.00.

800; slaughter lambs steady; several lots choice and 50 lb. woolled slaughter 26.00; good and choice 9.50; full to good woolled wether ewes 4.00-6.00.

Thursday's Estimates
CAGO (AP)—(USDA)—Official livestock receipts for day are 800 cattle, 7,000 hogs and 900 sheep.

Local Hog Prices

Hilton Swift & company prices on hogs Wednesday were:
190 lbs. \$16.25.
220 lbs. 16.50.
230 lbs. 16.35.
240 lbs. 16.20.
250 lbs. 16.06.
260 lbs. 15.90.
270 lbs. 15.75.
280 lbs. 15.60.
290 lbs. 15.45.
300 lbs. 15.25.
330 lbs. 15.00.
360 lbs. 14.75.
GOOD SOWS:
200 lbs. 15.25.
225 lbs. 15.00.
250 lbs. 14.75.
300 lbs. 14.25.
350 lbs. 13.75.
tailons are for 34 grade. 25c hundred different for each one cent for four lean cuts over or under 34 percent.

The Weather

Hilton and vicinity—Increasingly cloudy, warmer tonight, heavy Thursday with showers; turning colder Thursday. Winds tonight and day south 10 to 15 miles an hour. Low tonight 38, high Thursday.

IOWA
Partly cloudy and warmer Wednesday night, low 30s northwest to southeast. Thursday cloudy, and showers. Low 30s, high 40s. West and light rain or snow and south, high near 40 north to the 50s southeast. Further

Poultry and Produce

CHICAGO (AP)—Butter steady; wholesale buying prices unchanged; 33 score AA 57½; 92 A 57½; 90 B 56½; 89 C 55½; cars 90 B 57½; 89 C 57.

Eggs tops steady, balance mixed; wholesale buying prices 1 lower to 1 higher; 70 per cent or better grade A whites 37; mixed 36½; mediums 25; standards 31; dirties 26½; checks 25.

CHICAGO (AP)—(USDA)—Potatoes Arrivals 51; on track 181; total U.S. shipments 364; supplies moderate; demand slow; market dull; carlot track sales; Idaho russets 4.00-4.20; Washington russets 3.25; Washington baker 4.25; Red River Valley round reds 2.20-2.35.

CHICAGO (AP)—(USDA)—Live poultry: Wholesale buying prices ½ lower to 1 higher; roasters 26½-28½; special fed white rock fryers 20-20½; barred rock fryers 19½-20½.

DES MOINES (AP)—(USDA)—Iowa turkey market: Offerings heavy but consisting principally of young toms; most plants operating at capacity; some turkeys booked on open price basis handled on consignment or custom processed for grower; prices live weight at farms to 11 a.m. — young hen 22½-24; young toms 20-21; fryer-roasters 24.

Local Grain

Corn, No. 2, yellow, \$1.02; soybeans, No. 1, yellow, \$2.33; oats, No. 2, white, 34 lbs. \$.64.

Absentees Fall Behind

Absentee ballots for the Nov. 6 general election continue to be returned to the county auditor's office.

The returns, however, are expected to fall far short of the 1,066 absentee ballots cast in 1960. In that year the election of a president was at stake.

County Auditor Frank Humpton said all absentee ballots must be in his office the day before election if they are to be valid.

On election day the completed ballots are distributed to the polling places at which the voter would cast a ballot if they were not absent.

Ballots arriving at the auditor's office after election day, but with a postmark earlier than Nov. 6, will not be considered valid.

All votes cast on election day must be cast at an official polling place to be legally accepted.

Clarifies Ford Stand

T. K. Ford, Republican candidate for state senator pointed out today that he has taken a stand with reference to people already

Death Notices

Clyde Topping Dies At 78

Clyde Hamilton Topping, 78-year-old former Des Moines county state senator and operator of the J. W. Topping Real Estate and Insurance company, died at 3 a.m. Wednesday in Burlington hospital.

Death terminated an extended illness.

Topping's home was at 1027 N. 4th.

Native Of Kansas

A native of Kansas, Topping was born in Nees county on Jan. 8, 1884, the son of John W. and Ida Johnston Topping. He attended the State University of Iowa, and was married to Helen Young in Burlington on May 21, 1908. She survives, as do a son and a daughter: Clyde Hamilton Topping, Jr., Waterloo, and Mrs. Berkeley McIntosh of Rockford, Ill. There are nine grandchildren.

Also surviving are four sisters: Mrs. Daniel Upp, Ft. Lauderdale, Fla.; Mrs. Frank Lyons, Portland, Ore.; Mrs. Leslie Wilson, Davenport, and Mrs. Walter Metz of Burlington.

A daughter, Alice, and a brother, Glen, died previously.

Farmed In Canada

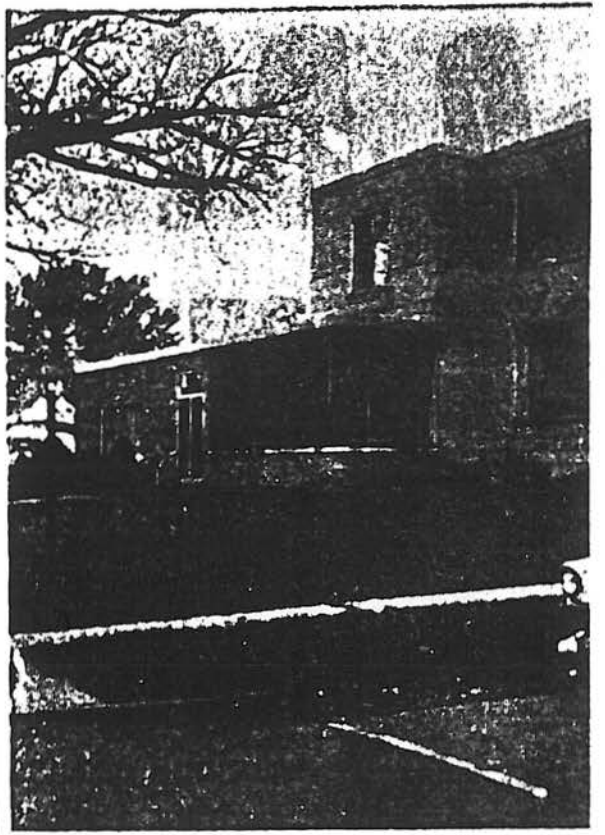
As a young man Topping farmed in Saskatchewan, Canada, later becoming a colonization agent for the Canadian Pacific Railway. In 1928 he entered Iowa politics and served in the 42nd and 43rd General Assemblies. Subsequently he was associated with Home Owners Loan, and later with the Iowa State Tax Commission. In recent years he had operated the Topping business.

Topping was a member of First Congregational church and of the Burlington Golf club.

Committal services will be held in Aspen Grove cemetery at 10:30 Friday morning. Dr. John Rose, pastor of First Congregational church, will officiate. The cortege will leave the Prugh Chapel at 10:15.

Mrs. Lillian Rogers

Services will be Thursday at



SALE OF GILES Funeral Home, Maple



Mrs. Robert Giles



G. A. Elliott



Elliott Buys

The Elliott-Lunning Funeral Home at 1002 The new owners to George A. Elliott, copresident of Elliott "Merger of the families of Elliott and Lunning with much greater eco-

1963

State of Iowa

JOURNAL OF THE SENATE

of the

SIXTIETH GENERAL ASSEMBLY

•
Convened January 14, 1963

Adjourned May 18, 1963
•

HAROLD E. HUGHES, Governor
W. L. MOOTY, President of the Senate
ROBERT W. NADEN, Speaker of the Rouse

Compiled Under Direction of
S. E. Tennant
Superintendent of Printing

Published by the
STATE OF IOWA
Des Moines

Be It Further Resolved: That a copy of this resolution be spread on the Journal of the Senate, and that the Secretary of the Senate be directed to forward an enrolled copy to his wife.

LEO ELTHON,
JACOB GRIMSTEAD,
LEIGH R. CURRAN,
Committee.

The resolution was unanimously adopted.

CLYDE H. TOPPING

MR. PRESIDENT: Your committee, appointed to prepare a suitable resolution commemorating the life, character and public service of the late Clyde H. Topping, begs leave to submit the following:

Clyde H. Topping was born in Nees County, Kansas on January 8, 1884, son of John W. and Ida Johnston Topping, one of five children.

Mr. Topping attended the State University of Iowa, and later married Helen Young in Burlington on May 21, 1908. As a young man Mr. Topping farmed in Saskatchewan, Canada, later becoming a colonization agent for the Canadian Pacific Railway. In 1928 he entered Iowa politics and served in the Forty-second and Forty-third General Assemblies. Subsequently he was associated with Home Owners Loan, and later with the Iowa State Tax Commission. In recent years he had operated the Topping business.

Mr. Topping was a member of First Congregational Church and of the Burlington Golf Club.

He died Wednesday, October 31, 1962, in the Burlington Hospital, Burlington, Iowa.

In addition to his widow, Mr. Topping is survived by a son and a daughter: Clyde Hamilton Topping, Jr., Waterloo, and Mrs. Berkeley McIntosh of Rockford, Illinois. There are nine grandchildren. Also surviving are four sisters: Mrs. Daniel Upp, Ft. Lauderdale, Florida; Mrs. Frank Lyons, Portland, Oregon; Mrs. Leslie Wilson, Davenport, and Mrs. Walter Metz of Burlington, Iowa. A daughter, Alice, and a brother, Glen, preceded him in death.

Therefore, Be It Resolved by the Senate of the Sixtieth General Assembly: That in the passing of Clyde H. Topping, the state has lost a valuable, loyal and honored citizen, and by this resolution tenders its sincere sympathy to the members of the family.

Be It Further Resolved: That a copy of this resolution be spread on the Journal of the Senate and that the Secretary of the Senate be instructed to forward an enrolled copy to each member of his family.

ROBERT R. DODDS,
CLIFFORD M. VANCE,
SEELEY G. LODWICK,
Committee.

The resolution was unanimously adopted.

Individual Record

FamilySearch™ U.S. Social Security Death Index

[Search Results](#)

Select record to download - Maximum: 50

 Clyde TOPPING

Birth Date:	8 Jan 1884
Death Date:	Oct 1962
Social Security Number:	480-22-6931
State or Territory Where Number Was Issued:	Iowa
Actual Death Residence:	Iowa

[Return to search results](#)[Prepare selected records for download](#)

This data is only accurate as of 1 Dec 2009.

The information on this printout is from the United States government records and is in the public domain. No claim to copyright is expressed or implied.

An official Web site of The Church of Jesus Christ of Latter-day Saints
© 2008 Intellectual Reserve, Inc. All rights reserved.
Conditions of Use Privacy Policy

[About Us](#) | [Contact Us](#) | [Press Room](#) | [Site Map](#)
[Records Custodians](#) | [Developer Network](#) | [LDS Church Sites](#) |
[LDS Country Sites](#)



Welcome to RootsWeb.com Sign in



DISCOVER MORE >

Home

Searches

Family Trees

Mailing Lists

Message Boards

Web Sites

Passwords

Help

JOIN FREE!

Meet Other Senior Singles Near You!



See Profiles Now

SeniorPeople!

Stirk-London Families

Entries: 52086 **Updated:** 2010-01-07 12:01:22 UTC (Thu) **Contact:** Kate Stirk

Persons known to be born after 1920 are not included. This is a work in progress- please check for proof (most sources noted here are not proof)

[Index](#) | [Descendancy](#) | [Register](#) | [Pedigree](#) | [Ahnentafel](#) | [Add Post-em](#)

- **ID:** I00387
- **Name:** Clyde Hamilton Topping
- **Sex:** M
- **Birth:** 8 JAN 1884 in Utica, Nees Cnty, Kansas
- **Death:** 31 OCT 1962 in Burlington, Des Moines Cnty, Iowa
- **Burial:** AspenGrove Cem, Burlington, Des Moines Cnty, Iowa
- **Reference Number:** 387
- **Note:**

Letter written by Mrs. Henry Galt Siegrist, to Trinity Church in Ottumwah, Iowa, dated October 1994
 Genealogy of the Fell Family in America compiled by Sarah M. Fell, 1891, edited and expanded by Armand London Fell, 1975
 Obituary - from State Historical Society of Iowa

Aspen Grove Cemetery, Burlington, Des Moines County, Iowa Section 191 - Section 222, compiled by Des Moines County Genealogical Society, Iowa
 1963 State of Iowa, Journal of the Senate of the Sixtieth General Assembly, page 1363

1920; Census Place: Burlington Ward 2, Des Moines, Iowa; Roll: T625_487; Page: 9A; Enumeration District: 5; Image: 669.

1930; Census Place: Burlington, Des Moines, Iowa; Roll: 653; Page: 15B; Enumeration District: 5; Image: 116.0.

Clyde H. Topping TOPPING, YOUNG
 Posted By: S. Ferrall <genealogy@sharylscabin.com> Date: 1/6/2004 at 08:20:41
<http://iagenweb.org/boards/desmoines/biographies/index.cgi?read=12109>
 Senator from the ninth district, Des Moines county, was born



Meet Other Senior Singles Near You!

Join Free!

See Profiles Now

Seniorf

on a ranch near Utica, Ness county, Kansas, January 8, 1884. His parents returned to Van Buren county, Iowa in 1888, and then moved to Burlington in 1896. Attended grammar and high school there and went to the State University of Iowa in 1903. Left the university in 1906 and with his father operated a ranch near Regina, Saskatchewan, Canada, in connection with a colonization project of theirs. Was married in 1908 to Miss Helen Welsh Young of Burlington, Iowa, and they have three children, Alice Hamilton, Eugenia Young, and Clyde H., Jr. After the disposal of the Canadian ranch he entered the employ of the Canadian Pacific Railway, and was connected with the sales organization of the land department of that railway at Calgary, Alberta, for ten years, leaving the Canadian Pacific Railway in 1921 to again engage in the real estate business with his father at Burlington, Iowa. He was elected to the Iowa senate in 1926. Republican member from Des Moines county. He is a member of the Congregational church.

Iowa Official Register 1927-1928 - Biographies of State Senators, pg. 236

▪ Ancestry Hints for **Clyde Hamilton Topping**

7 possible matches found on Ancestry.com



Father: [John W. Topping](#) b: 6 OCT 1858

Mother: [Ida Johnston](#) b: 12 JUL 1860

Marriage 1 [Helen Young](#) b: 8 DEC 1885 in Burlington, Des Moines Cnty, Iowa

- *Married:* 21 MAY 1908 in Burlington, Des Moines Cnty, Iowa

Children

1. [Alice Hamilton Topping](#) b: 28 JUN 1910 in Burlington, Des Moines Cnty, Iowa
2. [Eugenia Topping](#) b: 26 FEB 1916 in Iowa
3. [Clyde Hamilton Topping, Jr.](#) b: 5 OCT 1919 in Iowa

[Index](#) | [Descendancy](#) | [Register](#) | [Pedigree](#) | [Ahnentafel](#) | [Add Post-em](#)

compiled by Kate Stirk, Sources are not the same as proof! Check for proof.

[Printer Friendly Version](#) [Search Ancestry](#) [Search WorldConnect](#) [Join Ancestry.com Today!](#)

[WorldConnect Home](#) | [WorldConnect Global Search](#) | [WorldConnect Help](#)

RootsWeb.com, Inc. is NOT responsible for the content of the GEDCOMs uploaded through the WorldConnect Program. If you have a problem with a particular entry, please contact the submitter of said entry. You have full control over your GEDCOM. You can change or remove it at any time.

RootsWeb is funded and supported by [Ancestry.com](#) and our loyal RootsWeb community. [Learn more.](#)



You searched for **Clyde Hamilton Topping** in **Iowa**

World War I Draft Registration Cards, 1917-1918

Name: **Clyde Hamilton Topping**
County: **Des Moines**
State: **Iowa**
Birth Date: **8 Jan 1884**
Race: **White**
FHI Roll Number: **1643082**
Draft Board: **0**
Age:
Occupation:
Nearest Relative: [View image](#)
Height/Build:
Color of
Eyes/Hair:
Signature:

Source Citation: Registration Location: *Des Moines County, Iowa*; Roll *1643082*;
Draft Board: *0*.

Source Information:

Ancestry.com. *World War I Draft Registration Cards, 1917-1918* [database on-line]. Provo, UT, USA: Ancestry.com Operations Inc, 2005. Original data: United States, Selective Service System, *World War I Selective Service System Draft Registration Cards, 1917-1918*. Washington, D.C.: National Archives and Records Administration, M1509, 4,582 rolls. Imaged from Family History Library microfilm.

Description:

This database contains an index and images of World War I draft registration cards completed by approximately 24 million men living in the U.S. in 1917 and 1918. Information that may be found for an individual includes: name, place of residence, date and place of birth, race, country of citizenship, occupation, and employer. [Learn more...](#)

Contact Us: [1-800-ANCESTRY](#) [Ancestry.com Blog](#) [Affiliates](#) [Advertising](#)

© 2009 Ancestry.com [Corporate Information](#) [PRIVACY POLICY](#) [Terms and Conditions](#)

Ancestry.com