

Standard Form For Members of the Legislature

Name of Representative \_\_\_\_\_ Senator Lavery, Charles O.  
Represented Warren, Marion and Monroe Counties, Iowa

1. Birthday and place \_\_\_\_\_ Warren County, Iowa

2. Marriage (s) date place \_\_\_\_\_

None

3. Significant events for example:

A. Business Member of the Living History Farm Board of Trustees; member of Simpson College Board of Trustees; local member of Warren County Breton Bank

B. Civic responsibilities Rotary; Mason; Warren County Historical Society

C. Profession Owner and operator of Lavery Elevator, Indianola, Iowa; employee of General Mills Company, Brainerd, Minnesota; farmer

4. Church membership Methodist

5. Sessions served 63<sup>rd</sup>, 64<sup>th</sup> General Assemblies 1969-1970, 1971-1972

6. Public Offices

A. Local Assistant Extension Director in Goddard County, Iowa; Warren County Fair Board member

B. State \_\_\_\_\_

C. National \_\_\_\_\_

7. Death 10 June 1995 Indianola, Iowa; Buried I.O.O.F. Cemetery, Indianola, Iowa

8. Children Becky; David

9. Names of parents \_\_\_\_\_

10. Education \_\_\_\_\_  
\_\_\_\_\_  
\_\_\_\_\_  
\_\_\_\_\_

11. Degrees \_\_\_\_\_  
\_\_\_\_\_

12. Other applicable information *Repatriation* \_\_\_\_\_  
\_\_\_\_\_  
\_\_\_\_\_  
\_\_\_\_\_  
\_\_\_\_\_  
\_\_\_\_\_  
\_\_\_\_\_  
\_\_\_\_\_  
\_\_\_\_\_



# Obituaries

## Charles Laverty

Charles "Chuck" Laverty, 79, of Indianola died of complications of cancer Saturday, June 10, 1995, at The Village Health Care Center in Indianola. Visitation with family will be from 6:30 to 8 p.m. Tuesday, June 13, at Overton Funeral Home. Services will be held at 11 a.m. Wednesday, June 14, at First United Methodist Church in Indianola, of which he was a member, with burial at IOOF Cemetery.



Charles Laverty

Mr. Laverty, past senator of the Iowa Senate 1968-72, was born in Warren County and had lived here all of his life. He retired in 1993 as owner and operator of Laverty Elevator. He had also worked for General Mills Co. in Brainerd, Minn.,

and had been assistant Extension director in Woodbury County. He was a member of Warren County Fair Board, Living History Farms Board and the Simpson College Board of Trustees since 1964. He was a past board member of the Warren County Brenton Bank, Iowa Power, Iowa State University Athletic Council and member of Alpha Gamma Rho ETO chapter at ISU. He was also a 50-year member of Warren Lodge No. 53, and member of the Indianola Rotary Club, Warren County Historical Society and Warren County Farm Bureau.

Survivors include his wife, Irene; a daughter, Becky Laverty of Kimberling City, Mo.; a son, David of Indianola; and three grandchildren.

Memorial contributions may be made to Living History Farms or the Warren County Historical Society.

## Elsie Mae Lapham

Elsie Mae Lapham, 91, of Des Moines died of a heart ailment Tuesday, June 6, 1995, at Carlisle Care Center. Services were held June 9 at Southtown Funeral Home, with burial at Sunset Memorial Gardens Cemetery.

Mrs. Lapham, a homemaker, was born in Centerville and lived in Des Moines most of her life. She was a member of Park Avenue Presbyterian Church.

She was preceded in death by her husband, Gains.

Survivors include three sons, William Sr. of Des Moines, Leland of Lima, Ohio, and Ronald of Cedar Rapids; a daughter, Berneice Lassen of Vinton; two brothers, Donald Sparks of Orange, Calif., and Clyde Sparks of Chariton; a sister, Mary Hall of Carlisle; 21 grandchildren; and 21 great-grandchildren.

Memorial contributions may be made to her church or Hospice of Central Iowa.

## Hazel E. Blagg

Hazel E. Blagg, 76, of Indianola died of cancer Saturday, June 10, 1995, at Hospice Kavanagh House in Des Moines. The body was cremated, and memorial services will be held at 3 p.m. Saturday, June 17, at Peterson Funeral Home.

Mrs. Blagg, a homemaker, was born in Earlham and had lived in Indianola since 1960.

Survivors include her husband,

Guy W.; a son, Guy Jr. of Granger; three daughters, Kathi Phillips of West Des Moines, Janet Klein of Seoul, Korea, and Kris Oakie of Ankeny; a brother, Robert Thompson of Prescott, Ariz., and 10 grandchildren. A son, Marc, died May 18, 1995.

Memorial contributions may be made to Hospice Kavanagh House.

## Deaths

### Edith M. Bailey

Edith M. Bailey, 79, of Clearwater Beach, Fla., died of a heart ailment Sunday, June 4, 1995, at home. Among her survivors is a son, William of Norwalk. Memorial contributions may be made to the Boys and Girls Club of Central

Iowa.

### Virginia Eva Olson

Virginia Eva Olson, 62, of Murray died of cancer Saturday, June 3, 1995, at home. Among her survivors is a daughter, Cheryl Leir of Lacona.

## Clifford Dean Anderson

Clifford Dean Anderson, 86, of Indianola died of a heart ailment Wednesday, June 7, 1995, at Indianola Good Samaritan Center. Services were held June 10 at Hamilton's Near Highland Memory Gardens Funeral Home, with burial at Highland Memory Gardens Cemetery.

Mr. Anderson was born in Adelphi and had lived in Des Moines most of his life, moving to Indianola three years ago. He was a retired ediphone technician with Kock Brothers and a member of

Indianola Church of Christ.

Survivors include his wife, Elizabeth; three daughters, Barbara Daniels of St. Charles, Betty Shelton of Cedar Rapids and Dorothy Weltz of Peoria, Ill.; a brother, Nolan of Madrid; two sisters, Josephine McClain of Carlisle and Audrey Robinson of Mountain Home, Ark.; seven grandchildren; and 20 great-grandchildren.

Memorial contributions may be made to his church or Indianola Good Samaritan Center.

## B.G. Thomas

B.G. "Barney" Thomas, 78, of Indianola died of a heart ailment Friday, June 9, 1995, at Mercy Hospital Medical Center in Des Moines. Services were held June 13 at Overton Funeral Home in Indianola, with burial at IOOF Cemetery.

Mr. Thomas was born in Kent and had lived in the Indianola area since 1958. He was a retired farmer, had owned Barney's Rapid Service Station in Indianola and had worked for Solar Aircraft in Des

Moines. He was a member of the Warren County Farm Bureau.

Survivors include his wife, Verne; four daughters, Karen Dorsett and Lonita Gentry, both of Indianola, Linda Shahan of Cedar Falls and Marilyn Hunt of Basehor, Kan.; a sister, Thelma Sammons of Creston; nine grandchildren; and eight great-grandchildren.

Memorial contributions may be made to the American Heart Association.

## Veva Maxine Burgess

Veva Maxine Burgess, 89, of Des Moines died of a heart ailment Sunday, June 4, 1995, at Westview of Indianola Care Center. Services were held June 7 at Southtown Funeral Home with burial in Sunset Memorial Gardens Cemetery.

Mrs. Burgess, a homemaker, was born in Dallas County and lived in Des Moines most of her life. She was a member of Park Avenue Christian Church, Order of the Eastern Star, White Shrine and Sa-

cred Order of the Beauceant.

Survivors include her husband, Everett; a daughter, Jan Mulcahy of Des Moines; three sisters, Beatrice Tharp of Cedar Rapids, Thelma Batschelet of Panora and Helen Smithers of Anita; six grandchildren; and 10 great-grandchildren.

Memorial contributions may be made to the Alzheimer's Disease Association or Shriner's Crippled Children Hospitals.

## Paul Clyde Sandy

Paul Clyde Sandy, 76, of Muscatine died of complications of Parkinson's disease Thursday, June 8, 1995, at Muscatine Care Center. Services were held June 13 at Wesley United Methodist Church in Muscatine, of which he was a member, with burial at Greenwood Cemetery.

Mr. Sandy was born in Warren County and retired in 1976 from Stanley Engineering Co. He was chief highway engineer and project manager on various highway projects throughout the Midwest and belonged to many professional organizations. He was a veteran of

World War II and member of Indianola Post 165 of the American Legion and the Elks Lodge.

Survivors include a nephew, Larry Holden of Sandyville; a niece, Sherry VanPelt of Indianola; and a sister-in-law, Nancy Sandy of Indianola.

Ralph J. Wittich Funeral Home handled arrangements.

Memorial contributions may be made to his church.

## Weather

	Max
April 1	31
April 2	50
April 3	71
April 4	6
April 5	3
April 6	7
April 7	6
April 8	6
April 9	5
April 10	4
April 11	2
April 12	2
April 13	4
April 14	6
April 15	6

## Social Security

Anyone with Social Security



The will

Shop the RHT club

**Great Door Prizes!**

BARN

JOIN RUBE'S C BARNSTO

June Special

Sewing machine repair

Clean, Oil, Adjust

\$24<sup>95</sup>

Free Estimate Daily

Posey and Nosey

Clowns  
Puppets  
Ventriloquism

Specializing in Programs for Children

Let us make your child's party...

HAPPY BIRTHDAY POTATO!

# Board OKs instructional suppo

## District to levy 10 percent income surtax for 2 years

By Daniel P. Finney  
Record-Herald Staff Writer

The Indianola School Board voted unanimously Monday to participate in the Instructional Support Program, which will add a 10 percent income surtax to district residents' tax bills starting in 1996.

The support levy is expected to raise from \$2.2 to \$2.3 million during the two years it will be in effect.

Money raised will buy furniture for the elementary school additions and new middle school and update technology.

Dr. Harold Hulleman, Indianola superintendent, said the levy was not going to be

used for extravagant items.

"We're not asking for things we don't need," Hulleman said. "There is no exotic equipment in this list. The truth of the matter is we don't know all of the things we need. I'm afraid, as we get farther down the line, that the cost is going to get larger than that number."

The law allows school boards to adopt such levies if the length of the levy is under five years. However, district residents can force the support levy to be decided in an election by submitting a petition to the school board signed by 100 district residents by July 10.

If Indianola voters submit a petition, the support levy would be put on the ballot during the regular school board election in September.

### Support levy

The money raised from the levy would remove a \$584,347 deficit from school building projects and would go toward the cost of food service equipment, building furnishings and educational technologies.

Hulleman said the levy is an effort to make fund raising for the schools more fair.

"We are trying to equalize the taxing and spending," Hulleman said. "We're trying to put this on a more income, ability-to-pay basis."

The need for the levy arose because the district building projects, which include the new middle school, elementary school additions and high school renovations, were

\$584,347 over budget.

Previously Hulleman said the school board intends to reduce the current property tax levy by \$1.50 per \$1,000 of assessed valuation each year when the instructional support levy goes into effect in 1996-97.

During the meeting, board member Susan Glick urged the board to carry through on this promise.

"We really need to work at having the cash reserve reduced," Glick said during the meeting. "The temptation is always there. I know people want the best for their kids, but when they get the bill in the mail, that's when they really realize what we've done to them."

The support levy comes in the wake of the \$14.7 million bond issue for a new middle school passed last May and the \$2.2

mil  
lea  
sai  
nee  
wo  
sitt  
lev  
cla  
we  
tin  
in  
for  
an  
S  
C

## Laverty dies at 79

### 'Indianola will miss him very much'

By Carol Beronich-Jones  
Record-Herald Staff Writer

Charles "Chuck" Laverty, 79, made a big impression on people all across the state before his death Saturday of cancer.



Charles Laverty

A Warren County native, Laverty was owner and operator of Laverty Elevator in Indianola until 1993, when he sold the business to Heartland Co-Op.

Deb Davey, an employee at the elevator for 21 years, said Laverty always put the family first.

"If my kids were sick or anything, he always said the family comes before work," Davey said.

Working at the elevator for Laverty was like being a member of a caring family, Davey said.

"He was so giving," Davey said. "Whether it was work-related or personal, if you even needed money, you could go in there (his office) and just tell him what you needed."

Laverty treated his customers as well as his employees.

"If farmers couldn't pay for the chemicals they needed in the spring until they harvested their crops in the fall, then he just bent over backwards," Davey said. "He never required a signature he'd just say, 'Pay me when you can.'"

Davey recalled that Laverty would take friends, expense-free, to his cabin in Minnesota.

"He delighted in taking people there and doing things with people," she said.

Davey also remembers that Laverty liked popcorn.

"In the fall we would have popcorn that we would give out to customers," she said. "During the slow season on Fridays we would pop popcorn. He loved popcorn and you could always tell when Chuck was in because he would leave a trail of popcorn from the front office to his office."

Clark Raney, president of War-

ren County Brenton Bank, where Laverty served on the board of directors for 11 years, commended his business practices.

"I think a lot of his business success was due to his people skills," Raney said. "He had the ability to hire very good people and treat them well. That struck me about him the most."

Bob Downing, an Indianola contractor and friend to Laverty, was impressed with Laverty's business practices as well.

"He felt the farm crisis of the '80s as much as anyone else, but he was able to bounce back," Downing said.

Laverty's work didn't stop with his business though.

He served two terms in the Iowa Senate from 1968 to 1972.

One of his biggest accomplishments during his term in office was making Iowa Tuition Grants available to students in independent colleges, according to Stephen Jennings, president of Simpson College.

"He was one of the first to get them started," Jennings said. "He had a good perspective on private colleges, even though he was active in Iowa State University. About 70 percent of (Simpson) students receive those grants."

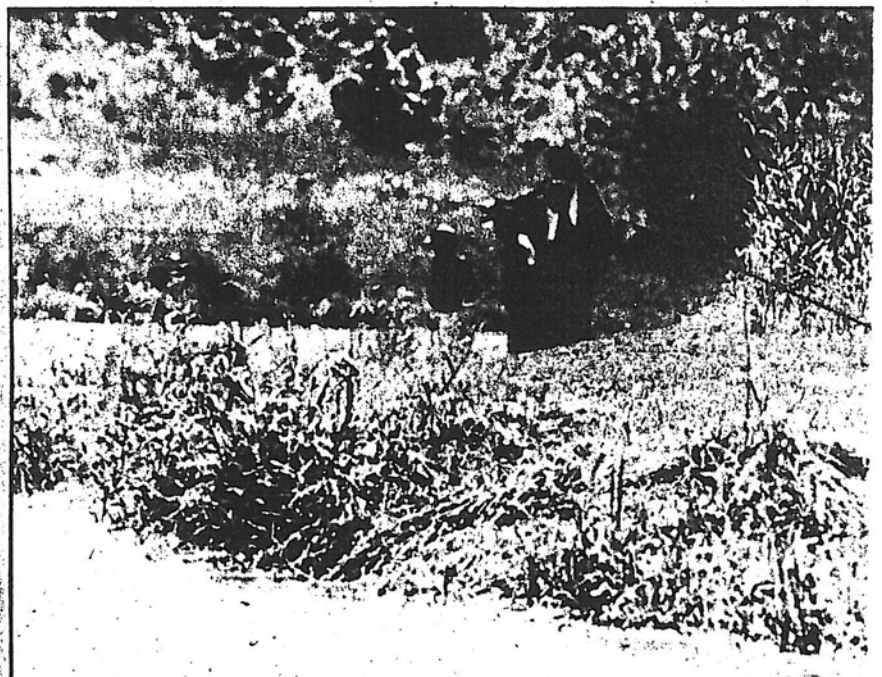
Jennings' relationship with Laverty went beyond admiration. Laverty was on the college's board of trustees when Jennings was hired as president. He served for more than 20 years until he asked to be put on honorary status, although he still attended every meeting.

Laverty came by Jennings' office on his first day of work, took him up town and introduced him to all the business owners.

"I'll always remember that," Jennings said.

Robert McBride, former president of Simpson College, also remembered that Laverty and Luther Hill were the first members of the board to visit him in Pennsylv-

**LAVERTY**  
Continued on Page 2A



### Just a nibble

Jill Carpenter and her son, Ryan, 5 1/2, of Indianola, wait for a nibble while participating in the Kids Fishing Day sponsored by the Warren County Conservation Board June 10. Ryan caught a fish right away, but his luck didn't hold as the day went on. According to WCCB officials, 123 area young-

sters tried their hand at fishing for the smallest fish caught. Ryan snagged, 13 inches; another, nine.

## Southern Warren County farmers give u

By Michael Rolands  
Record-Herald Staff Writer

Draw a line across Warren County, following the route of Iowa Highway 92.

Farmers north of that line are likely breathing easier after getting the majority of their corn planted. Farmers south of the line, harder hit by spring rains, are considering options even as their fields are drying out.

According to Mike White, crop specialist with the Iowa State University Extension, about 70 percent of the corn crop and 30 percent of the soybean crop is in the ground north of Hwy. 92 in Warren County. South of the highway, only 30

### Farmers' planting options

The recent easing of USDA rules gives farmers more options to consider. The changes include:

- Allowing soybeans and other crops to be planted on land intended for corn.
- Allowing producers enrolled in the feed grain program to switch acres that could not be planted into the 0/92 guaranteed program.
- Allowing producers prevented from planting any insured crop to establish an approved cover crop

on the acreage.

• Extending the filing period to 10 days for possible losses for the 1995 crop in cases of prevented planting only.

• Extending until July 15 the final date to report planted acreage to the CFSA and crop insurance agents.

• Granting an exception to the 5-acre minimum size of set aside and 0/92 acres for producers whose intended planting patterns were disrupted by rainfall or flooding.

### Lavery remembered as caring friend

**LAVERTY**  
Continued from Page 1A

vania, before he took the position at Simpson.

"Had it not been for them we probably would not have come to Simpson," McBride said.

McBride noted that Lavery was always sensitive about the relationship between the college and the community.

"He would spend a great deal of time resolving any issues or problems with the community," McBride said. "He was a very pivotal person to have on the board."

Lavery's work in politics didn't end with his stint in the Iowa Legislature. He campaigned in Warren County for Congressman Jim Ross Lightfoot in 1984.

"Chuck contributed a lot to the community over the years," said Lightfoot. "He was always one who was looking for something to do. You could call on him when you needed something. He was interested in politics and he always gave good advice."

Both Lavery and Lightfoot were airplane pilots and Lightfoot used Lavery's landing strip often.

"I always kidded him about 'Lavery Airlines,'" Lightfoot said, "because when I'd come back to my plane to leave I might find an apple or something in the seat, even though I hadn't seen him. He'll be missed."

An avid collector of antique farm machinery, Lavery worked on the board at Living History Farms in Des Moines almost from its beginning 25 years ago, according to Steve Green, executive director at the farms.

"He had a professional interest in agriculture, but a personal interest in it too," Green said. "He thought a lot about the farms and with his link to agriculture and ag people and businesses he was an invaluable person to the farms."

Lavery was a supporter of the arts and especially Des Moines Metro Opera.

Robert Larsen, artistic director of the opera, considered Lavery and his wife, Irene, "real friends."

"Perhaps one of our bonds lay in the fact that my father was a farmer and grain dealer," Larsen said. "(Lavery) was always thrilled that a musician and a man of the arts could come from a rural background and was proud to have done so."

Larsen described Lavery as a "farmer at heart" with a passion for the land and traditional values well-known to Iowa.

"He was at home in the Iowa Legislature, Simpson College board meetings and opera performances, but his keen enthusiasm for Iowa's heritage and his intense loyalty to Indianola were always there," Larsen said.

Larsen also noted that Lavery hosted parties for the opera company at his farm, which featured square dancing, milking and nail-pounding contests.

"His enthusiasm was contagious," Larsen said. "Indianola will miss him very much."

Complete obituary information appears on page 9A.

### Hulleman: District levy to

**SCHOOL LEVY**  
Continued from Page 1A

city."

Kelley suggested levying a 5 percent surtax over four years instead of 10 percent over two years.

"The building isn't going to go away," Kelley said. "The people

selling things are away and they're putting on more. It's probably more this comes at a time schools and ever lot from our citizens. Hulleman said tried about backlash. "Backlash is r

### Second investigator added to drug task force

**TASK FORCE**  
Continued from Page 1A

methamphetamine last year. The man wanted to cooperate on further investigations, but said there was little he could do — many of the dealers he knew had shut down out of fear because of a series of drug raids in the past month.

Lee attributes much of the increase to having a full-time investigator. In the past, officers worked on drug task force cases in their spare time between regular assignments and on an overtime basis. The full-time investigator can devote the time needed to build a strong case.

Lee cited the arrest of an Indianola man in November 1994. The case began when neighbors of Robert Michael Saf, 37, complained to Indianola police about an inordinate amount of traffic going in and out. The task force investigator was able to watch who was frequenting the house and check those people for previous

drug-related arrests.

The case involved jurisdictions in Missouri, California and Mexico, eventually leading to federal charges against Saf. He was recently sentenced to 120 months in federal prison with another five years of supervision for conspiracy to distribute marijuana and methamphetamine.

Lee said the Saf case may not have been as strong — if there had been a case at all — without the work of a full-time investigator. "There might have been a case come up, but it would have been more by luck than hard work."

While arrests are rising because of task force successes, the Warren County Attorney's office is waiting to find out if it will get federal money to help prosecute drug cases. Warren County Attorney Kevin Parker said he hopes to find out within a month if he will get the funds for a special drug prosecutor to handle cases in Warren and Marion counties.

### Hwy. 92 divides worst of county's ag disaster area

**FARMERS**  
Continued from Page 1A

Gov. Terry Branstad declared the southern tier of counties, including Warren County, an agricultural disaster area. That was followed by U.S. Secretary of Agriculture Dan Glickman announcing an easing of USDA rules to help farmers dealing with soaked fields.

Neil Moon, controller at the South-Central Co-Op in Lacona, said spring rains have struck in hit-and-miss style. He said several weeks ago, Lacona got a couple of inches of rain. On the same day,

Milo received less than an inch. "I think that's what broke us," Moon said.

The wet spring weather is setting the scene for a gloomy fall harvest. "I don't think you'd be very optimistic," Dave Bowlin, agronomist with the Heartland Co-op in Indianola, said about the harvest. "I think we can get some good yields in the northern half of the county. I think we're really going to suffer in the southern half."

"The important thing is to remain positive," Bowlin said. "But that gets tough."

Farmers in the most saturated

areas are now considering their options. Terry Pauling, acting county executive director for the U.S. Consolidated Farm Services Agency, said, "We already have a lot coming in. A lot of them are thinking about what options they have and what they're going to do."

Pauling said farmers should contact the CFSA office in Indianola before settling on a strategy for acres they could not plant because of rain. The CFSA's telephone number at the Indianola office is 961-2587.

**BIG BEA**  
**NURSE**  
**CLOSEO**

**BLOO**  
**GERAI**  
4" POTTED  
**99¢**  
4 1/2" POTTED  
**1.49**



**FRESH STOCK H**  
**HANGING BA**  
Brighten any porch, patio, or deck with one of our beautiful hanging baskets full of blooming Impatiens, Begonias, Petunias and more!

**8" EARTHTONE BASKET** **10" WHITE BASKET**  
**\$5.99** **\$6.99**

**COLO**  
**ANN**  
\*Ageratum \*Asters \*Alyssum \*Begonia  
\*Impatiens \*Marigolds \*Pansies \*Petun