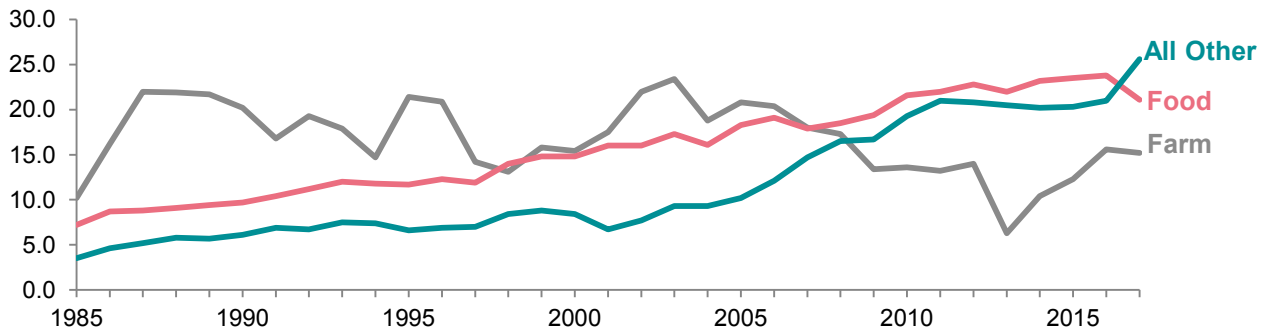
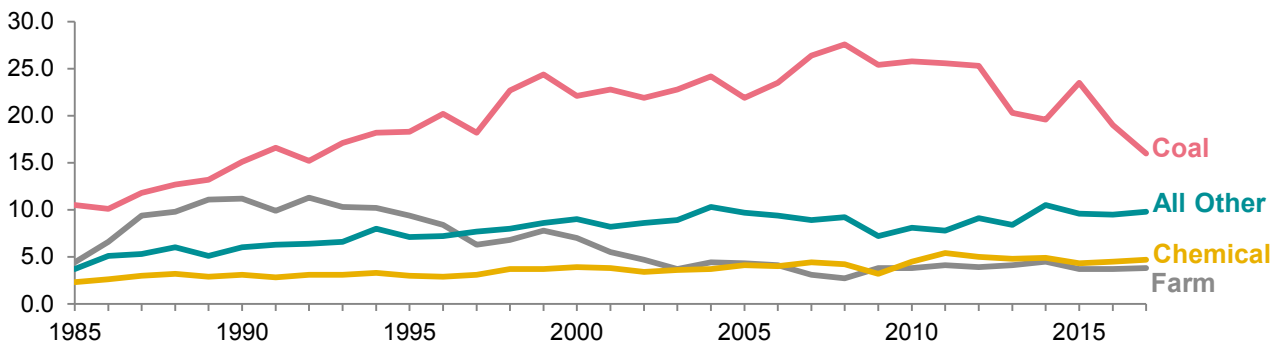


Commodities Transported by Railroad

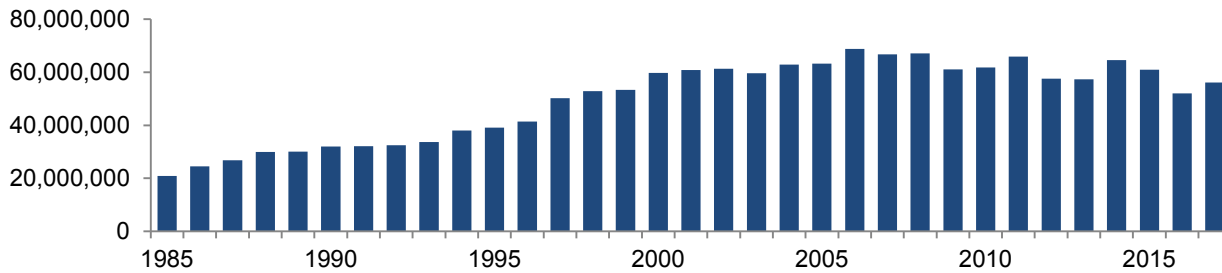
Originated in Iowa (tons in millions)



Terminated in Iowa (tons in millions)



Net-Ton Miles (tons in thousands)



Year	Originated Tons in Millions			Terminated Tons in Millions				Net-Ton Miles (thousands)	Rail Miles
	Farm	Food	All Other	Coal	Farm	Chemical	All Other		
2008	17.3	18.5	16.5	27.6	2.7	4.2	9.2	67,141,506	3,947
2009	13.4	19.4	16.7	25.4	3.8	3.2	7.2	61,061,959	3,945
2010	13.6	21.6	19.3	25.8	3.8	4.5	8.1	61,833,018	3,905
2011	13.2	22.0	21.0	25.6	4.1	5.4	7.8	65,925,942	3,893
2012	14.0	22.8	20.8	25.3	3.9	5.0	9.1	57,537,672	3,894
2013	6.3	22.0	20.5	20.3	4.1	4.8	8.4	57,334,318	3,854
2014	10.4	23.2	20.2	19.6	4.5	4.9	10.5	64,578,935	3,825
2015	12.3	23.5	20.3	23.5	3.7	4.3	9.6	61,004,904	3,823
2016	15.6	23.8	21.0	19.0	3.7	4.5	9.5	52,055,604	3,838
2017	15.2	21.1	25.6	16.0	3.8	4.7	9.8	56,162,690	3,848

NOTE: While Iowa rail miles have remained stable in recent years, the amount of tonnage moving over the Iowa network has increased. Between 1985 and 2017, ton miles (the movement of one ton of freight per one rail mile) increased 169.5%, while rail miles decreased 17.8%.