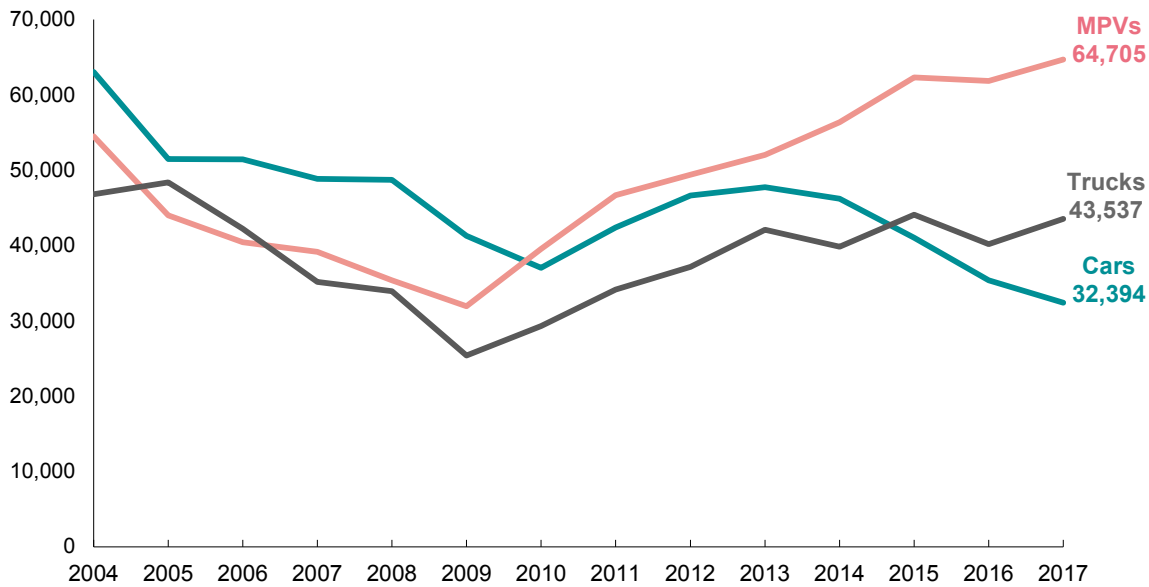
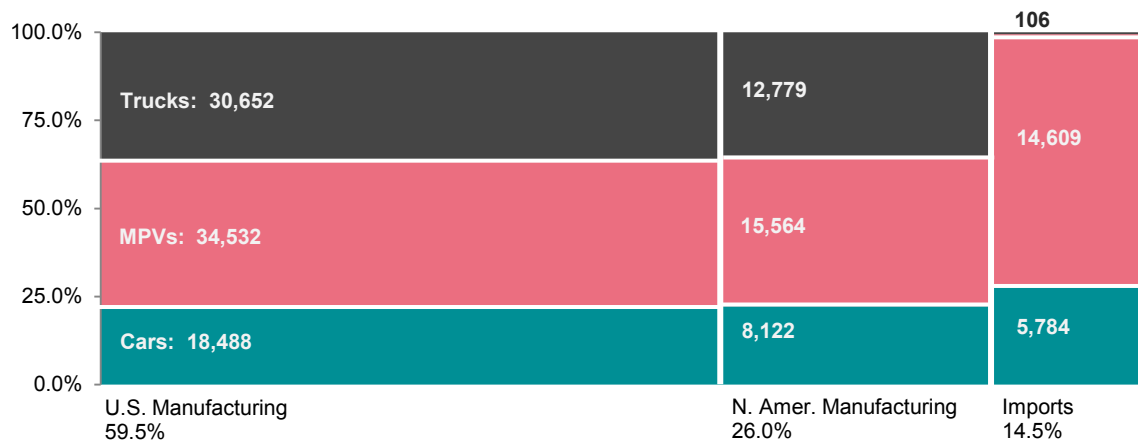


## New Registrations of Cars, Multipurpose Vehicles, and Trucks in Iowa



### Origin of Manufacture for New Registrations — CY 2017



Calendar Year	Cars	Multipurpose Vehicles (MPVs)	Trucks	Total
2008	48,742	35,398	33,953	118,093
2009	41,267	31,955	25,396	98,618
2010	37,027	39,559	29,295	105,881
2011	42,390	46,692	34,143	123,225
2012	46,623	49,422	37,178	133,223
2013	47,765	52,057	42,075	141,897
2014	46,233	56,352	39,846	142,431
2015	41,018	62,321	44,108	147,447
2016	35,397	61,859	40,195	137,451
2017	32,394	64,705	43,537	140,636