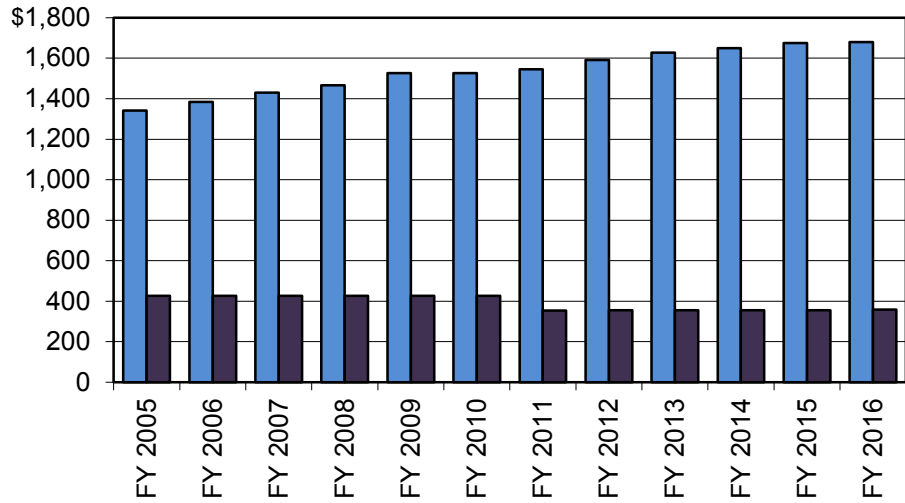


FAMILY INVESTMENT PROGRAM PAYMENTS



■ Poverty level (Excludes Farm Income) ■ FIP Monthly Payment

MONTHLY PAYMENT STANDARD FIP – IOWA

Effective Date	Family Size				
	Two	Three	Four	Five	Six
Jan. 1, 1986	\$ 322	\$ 381	\$ 443	\$ 490	\$ 545
July 1, 1988	333	394	458	507	564
July 1, 1989	347	410	476	527	587
July 1, 1990	361	426	495	548	610

NOTES:

- 1) The FIP payment amount is the maximum a family of that size would receive if the family had no income. Food assistance is in addition to the FIP payments and is based on a separate calculation.
- 2) For years not listed, the rate did not change from the previously listed year.
- 3) The FIP payment amounts have not changed since July 1, 1990.

Source: Department of Human Services