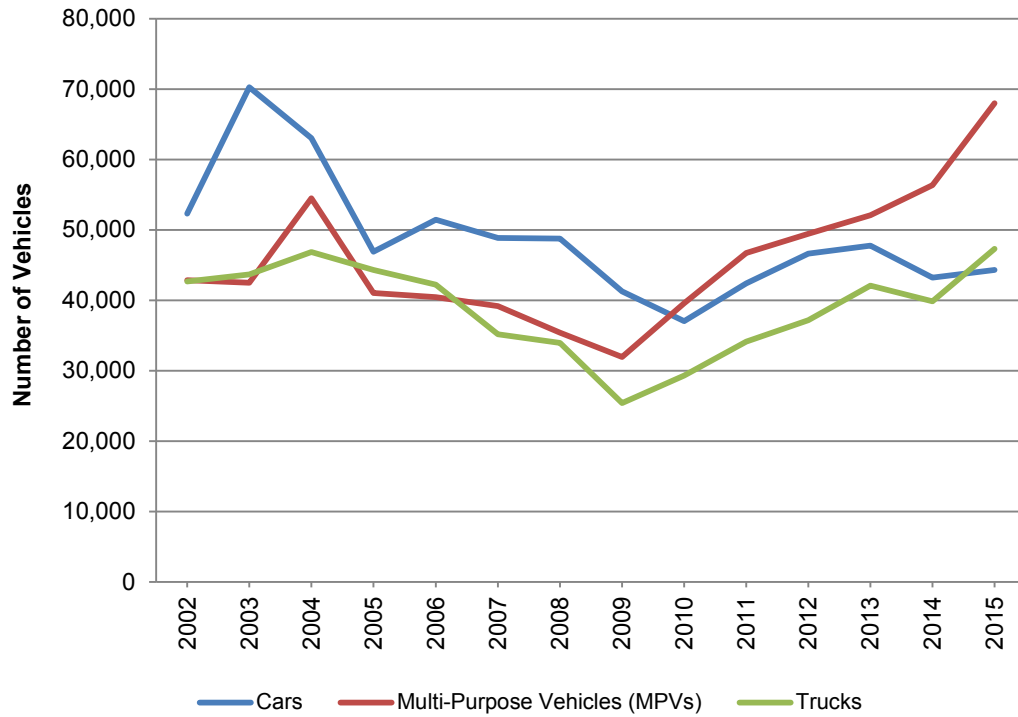


SALES OF CARS, TRUCKS, AND MULTI-PURPOSE VEHICLES IN IOWA



Calendar Year	Cars	MPVs	Trucks	Total
2005	46,874	41,049	44,286	132,209
2006	51,427	40,424	42,203	134,054
2007	48,856	39,178	35,176	123,210
2008	48,742	35,398	33,953	118,093
2009	41,267	31,955	25,396	98,618
2010	37,027	39,559	29,295	105,881
2011	42,390	46,692	34,143	123,225
2012	46,623	49,422	37,178	133,223
2013	47,765	52,057	42,075	141,897
2014	46,233	56,352	39,846	142,431
2015	44,306	68,007	47,318	159,631

Source: Labor Market and Workforce Information, Iowa Workforce Development, retrieved from the Iowa Department of Transportation