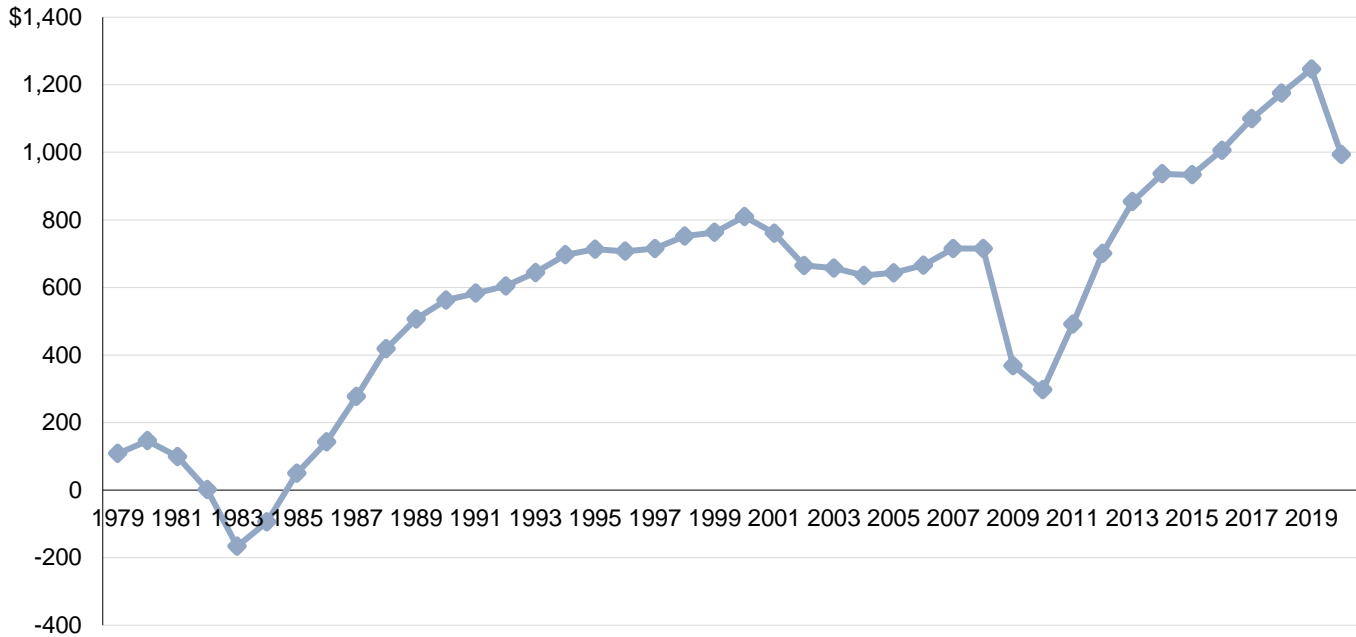


Unemployment Compensation Fund Iowa Balance as of December 31

(In millions)



Calendar Year	Combined Contributions	Net Benefits	Interest	Balance
2011	\$ 657.5	\$ 463.4	\$ 12.4	\$ 491.1
2012	615.0	417.0	15.3	700.5
2013	565.5	418.8	18.3	853.9
2014	463.5	402.6	20.6	936.1
2015	381.6	417.6	21.7	933.5
2016	471.4	423.5	21.0	1,005.8
2017	483.9	402.6	22.7	1,099.8
2018	415.7	364.7	25.0	1,175.0
2019	416.4	381.8	28.1	1,246.3
2020	902.8	1,254.2	27.4	993.5

Note: Net Benefits includes warrants issued in a calendar year that might not be reflected in the balance of the Fund until the following year due to when the check is cashed.