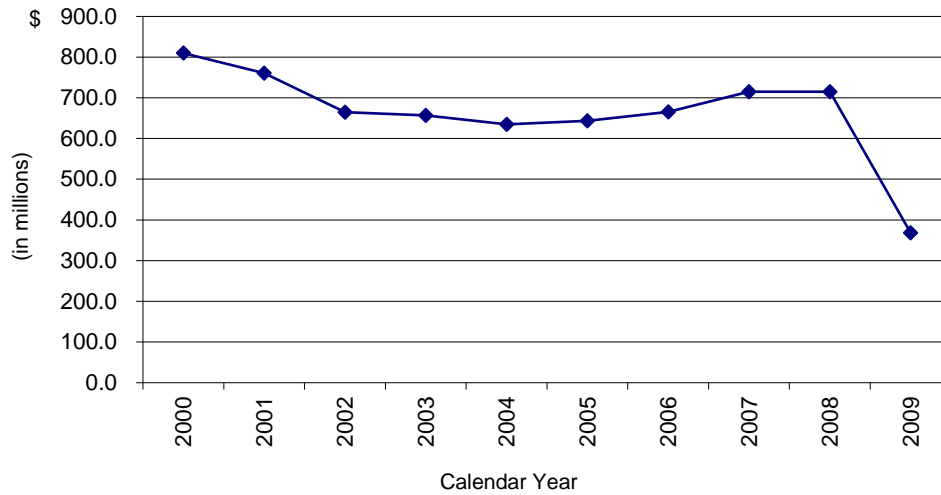


UNEMPLOYMENT COMPENSATION FUND IOWA BALANCE AS OF DECEMBER 31 (in millions)



| Calendar Year | Contributions | Net Benefits | Interest | Balance |
|---------------|---------------|--------------|----------|---------|
| 2000 | 205.4 | 215.4 | 51.1 | 809.8 |
| 2001 | 210.1 | 312.6 | 51.7 | 760.3 |
| 2002 | 221.6 | 362.6 | 48.7 | 665.0 |
| 2003 | 277.1 | 372.0 | 43.2 | 657.2 |
| 2004 | 306.5 | 309.0 | 39.3 | 635.2 |
| 2005 | 324.0 | 293.4 | 35.1 | 643.2 |
| 2006 | 345.2 | 309.8 | 31.2 | 665.8 |
| 2007 | 351.1 | 329.6 | 32.6 | 714.9 |
| 2008 | 369.3 | 417.8 | 35.0 | 714.9 |
| 2009 | 352.8 | 791.7 | 28.4 | 368.4 |

Source: Labor Market Workforce Information Division, Iowa Workforce Development