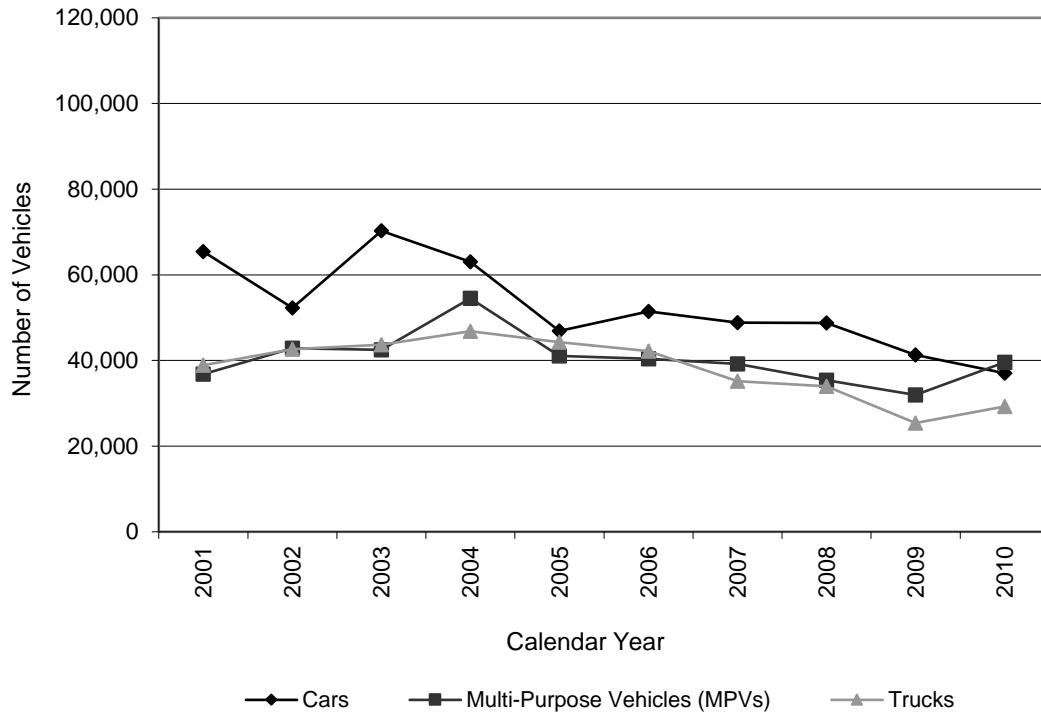


SALES OF CARS, TRUCKS, AND MULTI-PURPOSE VEHICLES IN IOWA



Calendar Year	Cars	MPVs	Trucks	Total
2001	65,459	36,836	38,886	141,181
2002	52,294	42,874	42,661	137,829
2003	70,255	42,510	43,662	156,427
2004	63,025	54,498	46,830	164,353
2005	46,874	41,049	44,286	132,209
2006	51,427	40,424	42,203	134,054
2007	48,856	39,178	35,176	123,210
2008	48,742	35,398	33,953	118,093
2009	41,267	31,955	25,396	98,618
2010	37,027	39,559	29,295	105,881

Source: Labor Market and Workforce Information, Iowa Workforce Development,
Retrieved from the Iowa Department of Transportation