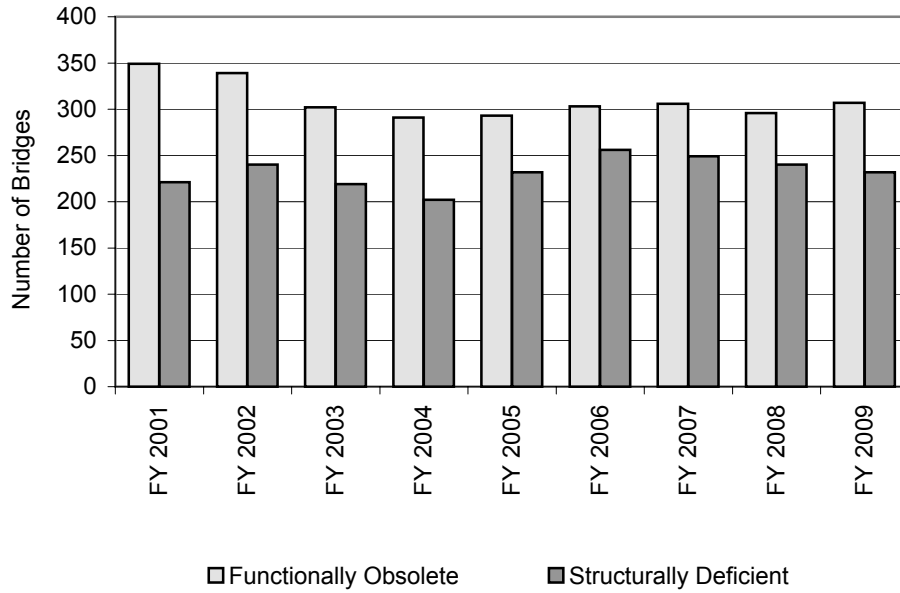


IOWA BRIDGES ON THE PRIMARY HIGHWAY SYSTEM



- The decrease in the total number of bridges from 2002 through 2004 is mainly due to the transfer of jurisdiction of those bridges to the counties and cities.

<u>Fiscal Year</u>	<u>Total</u>	<u>Functionally Obsolete</u>	<u>Structurally Deficient</u>
2001	4,112	349	221
2002	4,148	339	240
2003	3,943	306	219
2004	3,934	291	202
2005	3,968	293	232
2006	3,975	303	256
2007	3,997	306	249
2008	4,036	296	240
2009	4,092	307	232

Source: Iowa Department of Transportation