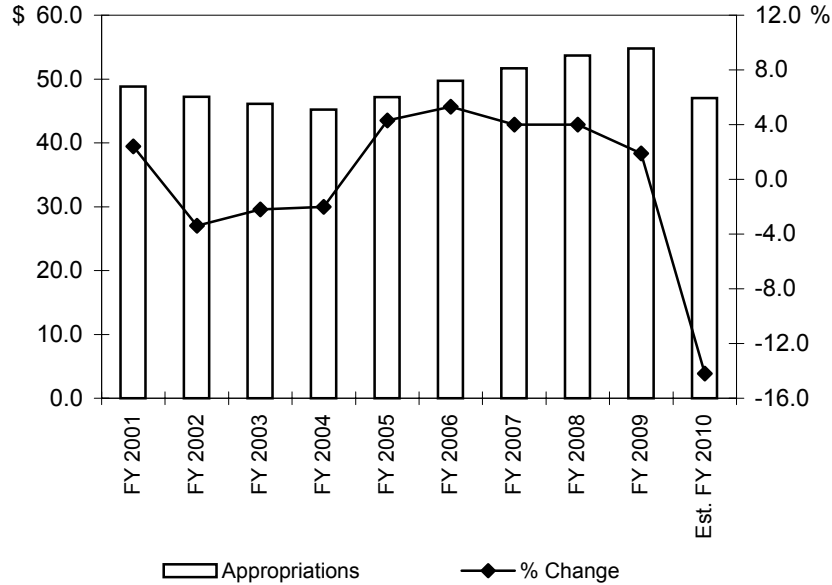


GENERAL FUND APPROPRIATIONS FOR TUITION GRANTS FY 2001- FY 2010



	<u>Appropriations</u>	<u>Change</u>	<u>Percent Change</u>
FY 2001	\$ 48,830,075	\$ 1,165,325	2.4%
FY 2002	47,155,382	- 1,674,693	- 3.4%
FY 2003	46,117,964	- 1,037,418	- 2.2%
FY 2004	45,200,787	- 917,177	- 2.0%
FY 2005	47,157,515	1,956,728	4.3%
FY 2006	49,673,575	2,516,060	5.3%
FY 2007	51,673,576	2,000,001	4.0%
FY 2008	53,748,576	2,075,000	4.0%
FY 2009	54,764,597	1,850,000	1.9%
Est. FY 2010	46,981,467	-7,783,130	- 14.2%

Percent increase FY 2001 - estimated FY 2010 - 3.8%
 Ten-year average annual change - 0.4%

Note:

For FY 2010 the total is separated as follows: \$42,491,762 for nonprofit institutions and \$4,489,705 for proprietary (for-profit) institutions minus the 10% across-the-board reduction.