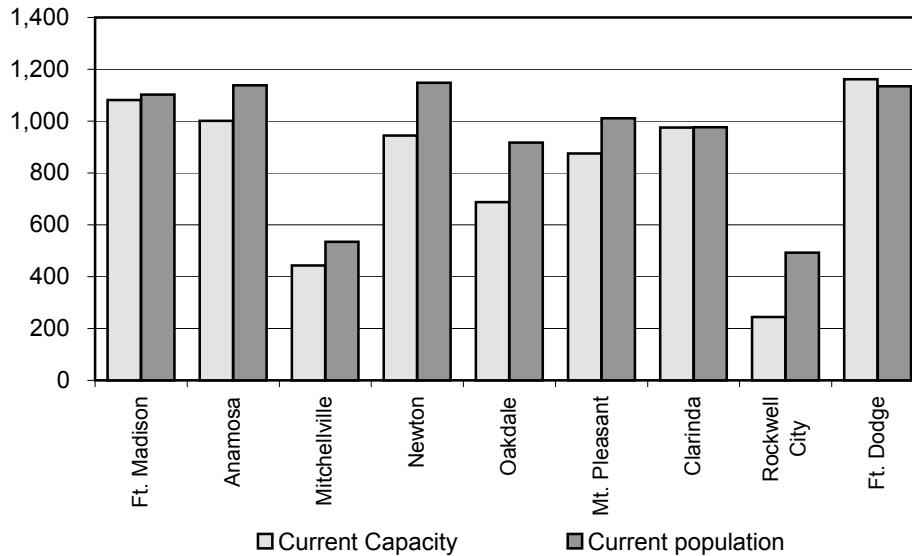


DESIGNED CAPACITY COMPARED TO FY 2009 IOWA INMATE POPULATION



IOWA'S INMATE POPULATION (as of July 1)

Fiscal Year	Ft. Madison	Anamosa	Mitchellville	Newton	Oakdale	Mt. Pleasant	Clarinda	Rockwell City	Ft. Dodge	Total
2000	901	1,234	469	1,065	758	1,022	782	387	1,028	7,646
2001	887	1,330	504	1,089	857	972	912	430	1,120	8,101
2002	898	1,276	531	1,112	869	952	863	460	1,211	8,172
2003	926	1,303	564	1,172	773	1,080	848	479	1,250	8,395
2004	1,060	1,314	579	1,186	798	1,052	901	464	1,257	8,611
2005	990	1,315	600	1,182	779	1,035	954	494	1,229	8,578
2006	1,028	1,335	578	1,214	769	1,042	1,040	496	1,157	8,659
2007	1,133	1,336	618	1,174	831	1,065	1,077	491	1,081	8,806
2008	1,083	1,341	596	1,143	1,006	1,021	955	495	1,097	8,737
2009	1,102	1,138	535	1,148	917	1,011	977	492	1,134	8,454

Notes:

- 1) A new 750-bed medium-security facility opened in July 1998 at Fort Dodge. Another 400 medium-security beds were added in February 2000.
- 2) An additional 184 medium-security beds opened in April 2000 at Mitchellville. Another 48 beds were added in November 2000.
- 3) The 200-bed Clinical Care Unit at Fort Madison became fully operational in June 2003.
- 4) Seventeen minimum-security beds were added at the Luster Heights Prison Camp in January 2004.
- 5) A 225-bed minimum-security lodge opened at Clarinda in March 2005.
- 6) A 25-bed Special Needs Unit opened in September 2005 at Oakdale.
- 7) A 16-bed house for sex offender safekeepers opened in FY 2007.
- 8) A 178-bed medium-security unit opened at Oakdale in September 2007.

Source: Department of Corrections

Iowa LSA Staff Contact:
Beth Lenstra
(515-281-6301)
beth.lenstra@legis.state.ia.us