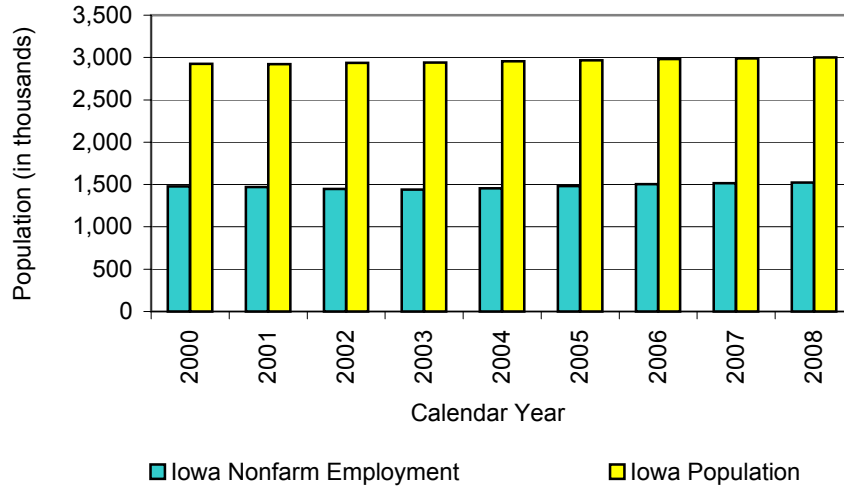
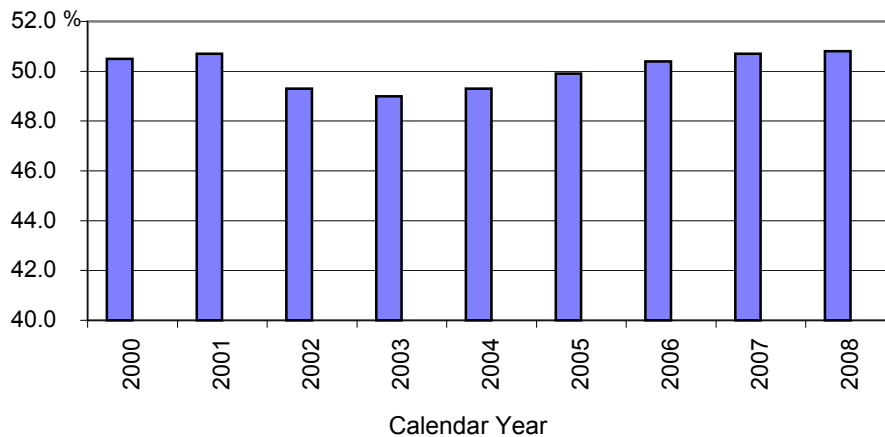


IOWA NONFARM EMPLOYMENT COMPARED TO TOTAL IOWA POPULATION (Calendar Year)



- Iowa population increased by 76,173 (2.6%) and nonfarm employment grew by 45,700 (3.1%) from 2000 to 2008.

PERCENT OF IOWA POPULATION EMPLOYED IN NONFARM OCCUPATIONS (Calendar Year)



Source: Labor Market and Workforce Information Division, Iowa Workforce Development

Iowa LSA Staff Contact:
Ron Robinson
(515-281-6256)
ron.robinson@legis.state.ia.us