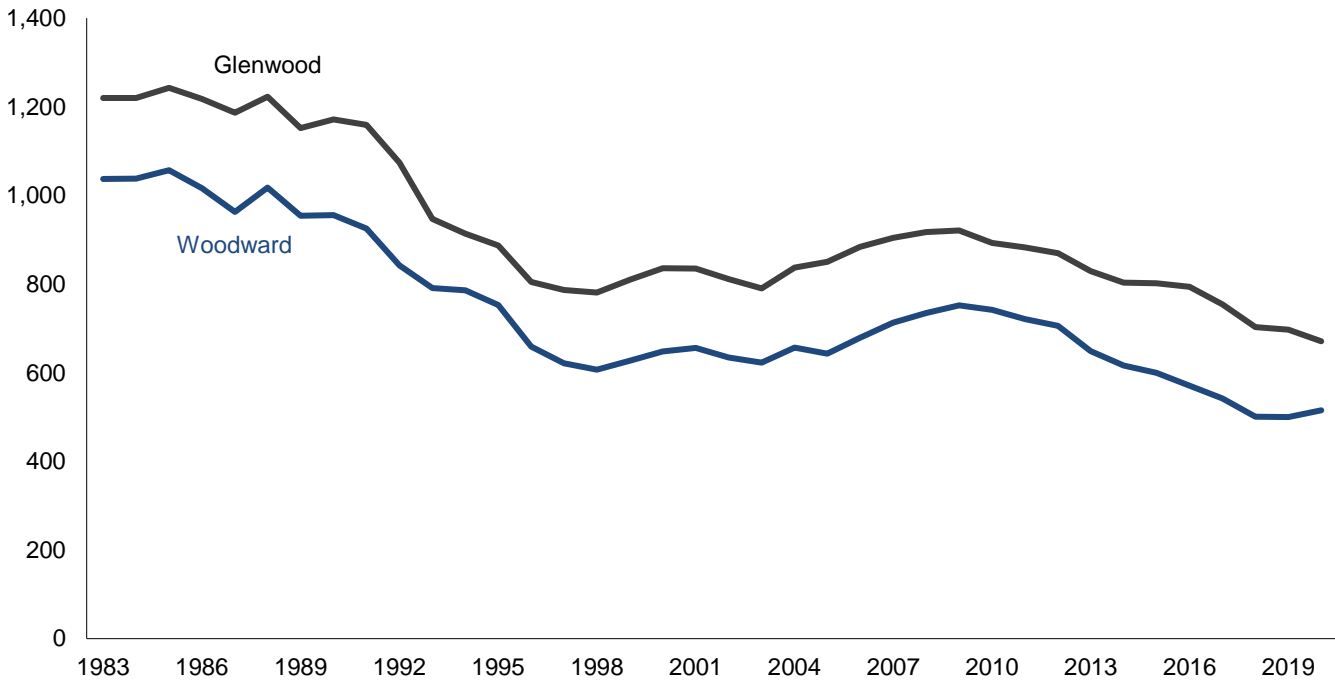


Staffing Levels at Human Services Institutions

(FTE Positions)



Average Annual Staffing Levels

(FTE Positions)

| Fiscal Year | Juvenile Institutions | | Resource Centers | | Mental Health Institutions | | | |
|-------------|-----------------------|--------|------------------|----------|----------------------------|----------|--------------|----------------|
| | Toledo | Eldora | Glenwood | Woodward | Cherokee | Clarinda | Independence | Mount Pleasant |
| 2011 | 102 | 163 | 883 | 721 | 153 | 89 | 233 | 92 |
| 2012 | 108 | 161 | 870 | 706 | 165 | 85 | 226 | 92 |
| 2013 | 108 | 160 | 829 | 649 | 171 | 79 | 224 | 90 |
| 2014 | 55 | 159 | 803 | 616 | 168 | 78 | 223 | 90 |
| 2015 | N/A | 157 | 802 | 600 | 165 | 75 | 224 | 75 |
| 2016 | N/A | 159 | 794 | 571 | 162 | N/A | 209 | N/A |
| 2017 | N/A | 165 | 754 | 542 | 158 | N/A | 188 | N/A |
| 2018 | N/A | 166 | 703 | 501 | 147 | N/A | 180 | N/A |
| 2019 | N/A | 182 | 697 | 500 | 145 | N/A | 176 | N/A |
| 2020 | N/A | 185 | 671 | 515 | 150 | N/A | 180 | N/A |

Notes:

- 1) FTE: Full-time equivalent
- 2) The Toledo Juvenile Home was closed in FY 2014.
- 3) The Clarinda and Mount Pleasant Mental Health Institutes were closed in FY 2015.