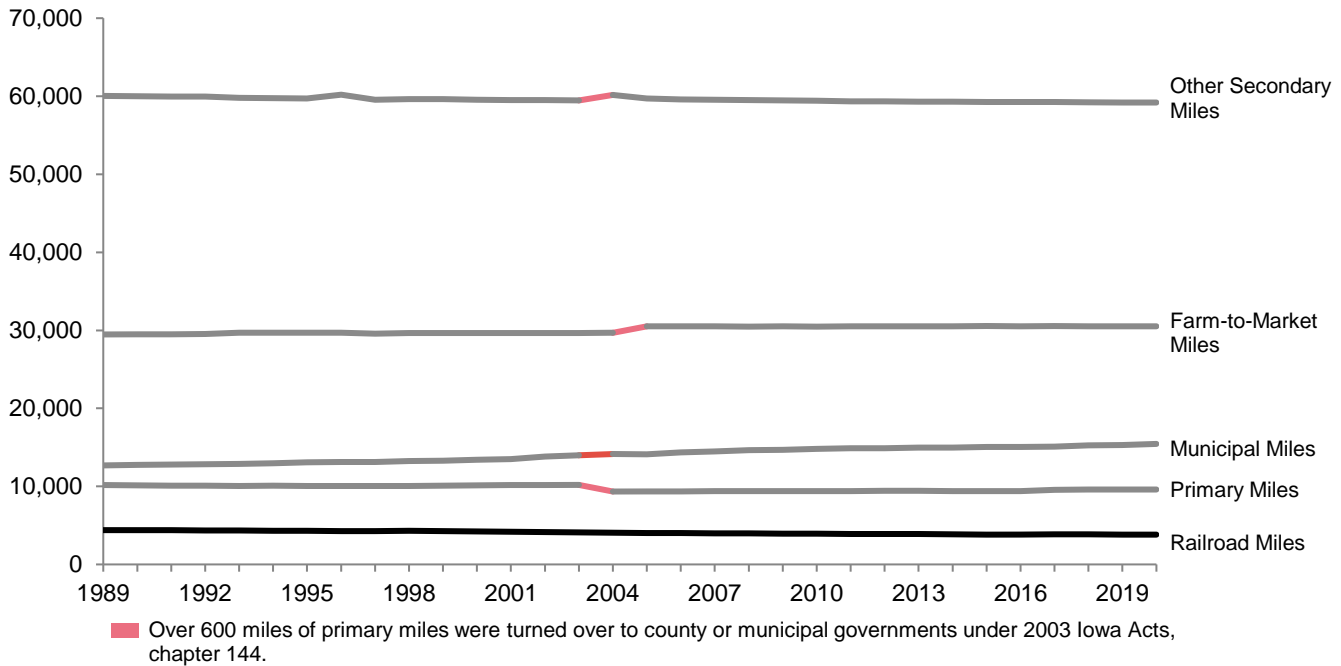


Iowa Highway and Railroad Miles



Calendar Year	Primary Miles	Farm-to-Mkt. Miles	Other Secondary Miles	Municipal Miles	Railroad Miles
2013	9,420	30,515	59,320	14,953	3,894
2014	9,410	30,518	59,306	14,965	3,854
2015	9,403	30,539	59,278	15,037	3,825
2016	9,402	30,530	59,253	15,067	3,823
2017	9,574	30,547	59,266	15,102	3,838
2018	9,595	30,526	59,219	15,243	3,838
2019	9,598	30,527	59,190	15,312	3,837
2020	9,617	30,527	59,190	15,442	3,837

Notes:

- 1) Railroad miles do not include trackage rights and reflect mileage recorded as of January 1 of each year. All highway miles reflect January 1 status and do not contain proposed or legally closed road mileage. Municipal miles do not contain municipal primary miles.
- 2) Iowa ranks 14th in the nation in number of miles of roadway (2019).
- 3) There are approximately 38 miles of road for every 1,000 persons in Iowa.
- 4) Primary highways make up 8.2% of the total Iowa road system.
- 5) Approximately 91.9% of all semitrailer truck traffic is traveled on the primary highway system.
- 6) Primary road miles increased in 2017 due to how ramps are measured at interchanges.