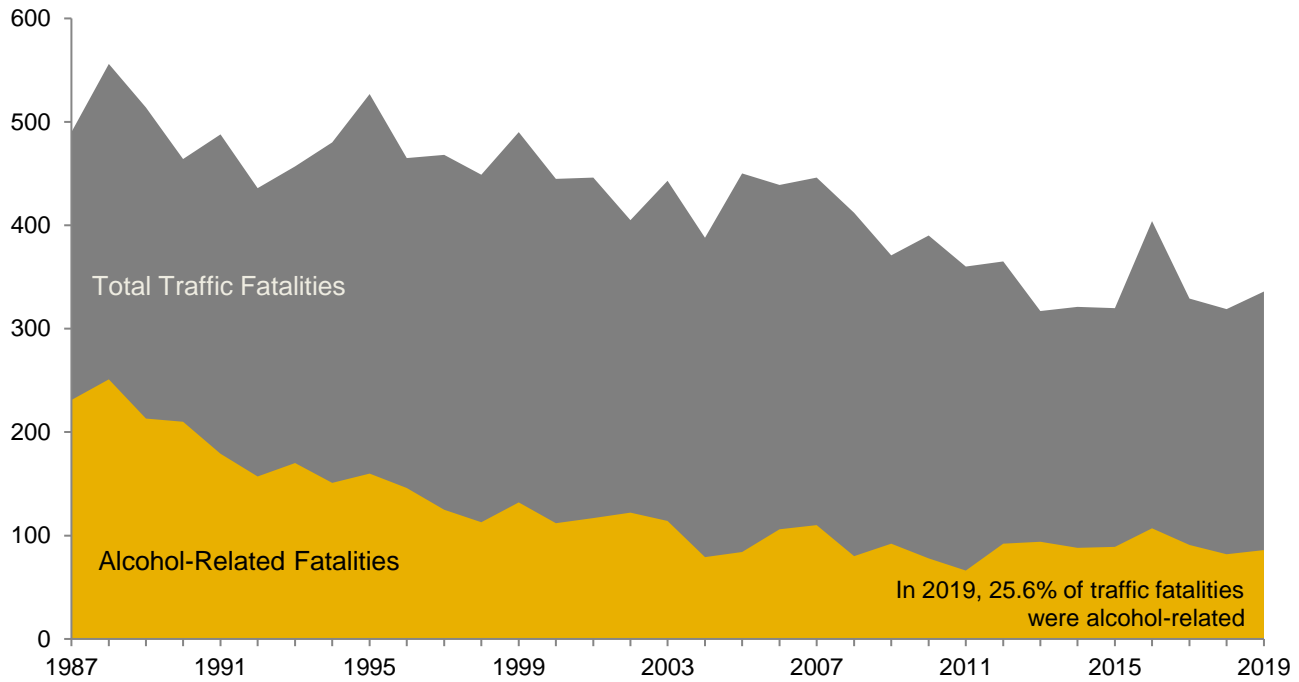


Alcohol-Related Traffic Fatalities in Iowa



Alcohol-Related Traffic Fatalities by Age

Calendar Year	Age of Driver						
	Under 16	16-24	25-34	35-44	45-54	55-64	65 and Over
2009	0	23	21	20	13	10	5
2010	0	23	16	13	14	10	2
2011	0	20	14	10	11	7	4
2012	2	23	20	23	15	7	2
2013	3	28	21	17	16	6	3
2014	0	25	19	12	21	11	0
2015	0	23	20	14	14	14	4
2016	0	23	31	18	13	12	10
2017	5	17	30	13	13	11	2
2018	1	18	22	14	13	10	4
2019	1	17	22	18	11	14	3

■ Increased from previous year